

DESCRIPTION

The Corelite R3 LED combines the internally developed Linear LED platform from Cooper Lighting with the high sense of style and superior brightness management that characterizes the CoreLite Class R family. The proprietary LED platform delivers a soft, diffuse volume of pure white light that carries the general character of a fluorescent source while simultaneously eliminating unsightly socket shadows and the hassle of luminaire maintenance. A guaranteed system life of 50,000 hrs combined with exceptional efficacy make the R3 LED the ultimate solution to satisfy the most stringent energy requirements with an ultra-light carbon footprint.

Catalog #		Type
Project		
Comments		Date
Prepared by		

[GET A QUOTE >](#)

SPECIFICATION FEATURES

A ... Construction

Low profile housing constructed of die formed 20 gauge cold rolled steel with integral 20 gauge gear tray.

B ... Reflector

Precision tooled, high reflectance sheet metal which allows for easy access to ballast compartment from below ceiling plenum.

C ... Shielding

High light transmission frosted prismatic acrylic lens with UV inhibitors minimizes lamp image and ensures efficient light distribution. Lenses secured to housing via injection molded inserts for easy lamp access.

D ... Electrical

Fixture equipped with proprietary Cooper LED modules available in 3000, 3500 or 4000k with a CRI plus or minus 85. Removable module features aluminum extrusion providing exceptional thermal management. Modules are driven using universal voltage switch mode LED drivers. Fixture and modules certified to UL and CUL standards. A 0 to 10V dimming control is available (standard).

E ... Finish

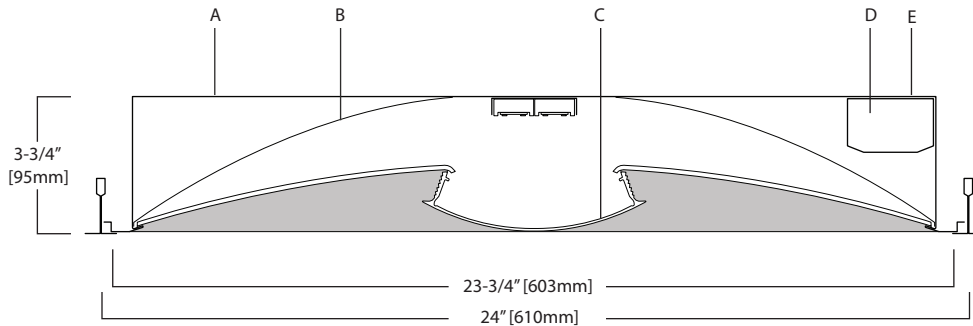
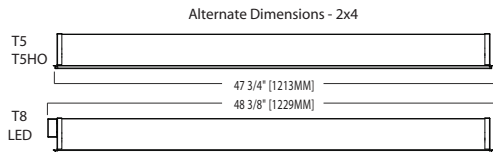
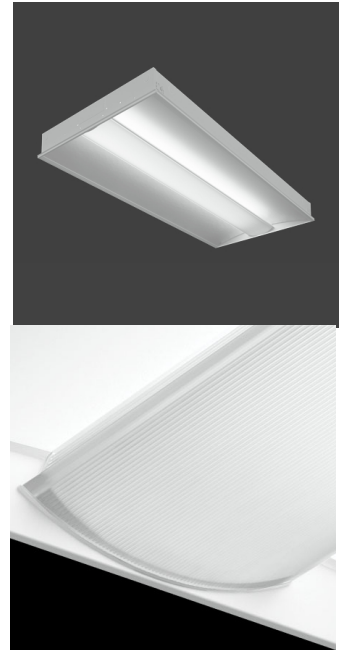
Fixture housings are high reflectance white using electrostatically applied polyester powder coat paint.

Mounting

Standard flange design works with most lay in ceiling types. Integral pryout tabs secure luminaire to ceiling grid from above. Fixture offers tie in locations for tie wire on all corners, consult local code for appropriate tie wire recommendations.

Note: Concealed Ceiling

Class R may be installed into inaccessible ceilings (sheet rock, wood panel, etc.). This is achieved with the Metalux DFW series drywall frame-in kit, ordered separately from Metalux. Specify CC for the Corelite Ceiling Type. Specify the following part numbers separately, from Metalux: For 1x2, order Metalux part DF-12W-U.



CLASS R3 Linear Prismatic Lens

LED

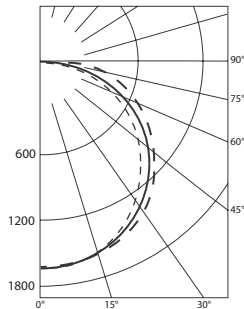
2'x4' Recessed
3-3/4" Depth

ORDERING INFORMATION

Sample Number: R3-WL-1L30-1C-UNV-24-T1

Series R3: Class R3	Shielding L: Linear Prismatic Lens	Color Temperature L30: LED 3000K L35: LED 3500K L40: LED 4000K	Wiring ¹ B: Battery Pack C: Standard Circuit D: Dimming E: Emergency T: Nightlight Y: Daylight	Voltage ¹ 120: 120V 277: 277V 347: 347V UNV: Universal (120V-277V)	Ceiling Type T1: 1" Grid, Slot-Grid, 9/16" Tegular T9: 9/16" Grid CC: Concealed Ceiling	Options ¹ AR: Air Return CP: Chicago Plenum NY: New York City Construction W6: 6' Whip Flex W12: 12' Whip Flex
Reflector W: White	Light Level 1: Light Level 1 2: Light Level 2	Number of Circuits 1: 1 Circuit		Size 24: 2' x 4'		

Notes: 1 Not all options available. Please consult your Cooper Lighting Representative for availability. Specifications and dimensions subject to change without notice.



R3-WL-2L35-2x4
5035 Lumens
89.6 LPW
LED ALM 2.0

Test Report: #P22372

Coefficients of Utilization

		Effective floor cavity reflectance 20%																	
		80%			70%			50%			30%			10%			0%		
rc		70	50	30	10	70	50	30	10	50	30	10	50	30	10	50	30	10	0
RCR																			
0	119	119	119	119	116	116	116	116	111	111	111	106	106	106	102	102	102	100	0
1	108	103	98	94	105	100	96	92	96	93	89	92	89	87	89	86	84	82	0
2	98	89	82	76	95	87	80	75	83	78	73	80	75	71	77	73	70	67	0
3	89	78	69	62	86	76	68	62	73	66	61	70	64	60	68	63	58	56	0
4	81	69	59	52	79	67	59	52	65	57	51	62	56	51	60	55	50	48	0
5	74	61	52	45	72	60	51	45	58	50	44	56	49	44	54	48	43	41	0
6	69	55	46	39	67	54	45	39	52	44	39	50	43	38	49	43	38	36	0
7	64	50	41	34	62	49	40	34	47	40	34	46	39	34	45	38	34	31	0
8	59	45	37	31	58	45	36	31	43	36	30	42	35	30	41	35	30	28	0
9	55	42	33	28	54	41	33	27	40	32	27	39	32	27	38	32	27	25	0
10	52	38	30	25	51	38	30	25	37	30	25	36	29	25	35	29	25	23	0

Zonal Lumen Summary

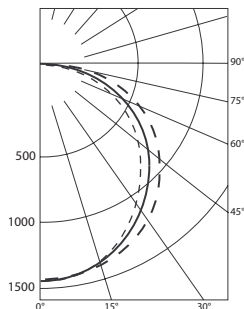
Zone	Lumens	% Lamp	% Fixture
0-30	1292	N.A.	25.7
0-40	2114	N.A.	42
0-60	3792	N.A.	75.3
0-90	5035	N.A.	100
40-90	2921	N.A.	58
60-90	1243	N.A.	24.7
90-180	0	N.A.	0
0-180	5035	N.A.	100

Luminance Data

Angle in Deg	0-Deg cd/sm	45-Deg cd/sm	90-Deg cd/sm
45	2073	2297	2493
55	1908	2302	2626
65	1724	2310	2743
75	1514	2354	2905
85	1338	2413	2793

Candela

Angle	0-Deg	23-Deg	45-Deg	68-Deg	90-Deg
0	1667	1667	1667	1667	1667
5	1670	1656	1663	1660	1660
10	1643	1631	1641	1640	1641
15	1598	1589	1604	1608	1610
20	1538	1532	1553	1558	1563
25	1460	1459	1485	1496	1502
30	1365	1371	1408	1425	1434
35	1258	1270	1319	1350	1366
40	1141	1161	1225	1272	1298
45	1018	1045	1128	1196	1224
50	890	925	1027	1110	1142
55	760	801	917	1012	1046
60	632	679	801	901	933
65	506	556	678	774	805
70	387	437	551	639	667
75	272	324	423	498	522
80	169	215	295	343	344
85	81	115	146	164	169
90	0	0	0	0	0



R3-WL-1L35-2x4
4355 Lumens
94.5 LPW
LED ALM 2.0

Test Report: #P22378

Coefficients of Utilization

		Effective floor cavity reflectance 20%																	
		80%			70%			50%			30%			10%			0%		
rc		70	50	30	10	70	50	30	10	50	30	10	50	30	10	50	30	10	0
RCR																			
0	119	119	119	119	116	116	116	116	111	111	111	106	106	106	102	102	102	100	0
1	108	103	98	94	105	100	96	92	96	93	89	92	89	87	89	86	84	82	0
2	98	89	82	76	95	87	80	75	83	78	73	80	75	71	77	73	70	67	0
3	89	78	69	62	86	76	68	62	73	66	61	70	64	59	68	63	58	56	0
4	81	69	59	52	79	67	59	52	65	57	51	62	56	51	60	54	50	48	0
5	74	61	52	45	72	60	51	45	58	50	44	56	49	44	54	48	43	41	0
6	69	55	46	39	67	54	45	39	52	44	39	50	43	38	49	43	38	36	0
7	64	50	41	34	62	49	40	34	47	40	34	46	39	34	44	38	33	31	0
8	59	45	37	31	58	45	36	31	43	36	30	42	35	30	41	35	30	28	0
9	55	42	33	28	54	41	33	27	40	32	27	39	32	27	38	32	27	25	0
10	52	38	30	25	50	38	30	25	37	30	25	36	29	25	35	29	24	23	0

Zonal Lumen Summary

Zone	Lumens	% Lamp	% Fixture
0-30	1115	N.A.	25.6
0-40	1825	N.A.	41.9
0-60	3275	N.A.	75.2
0-90	4355	N.A.	100
40-90	2530	N.A.	58.1
60-90	1079	N.A.	24.8
90-180	0	N.A.	0
0-180	4355	N.A.	100

Luminance Data

Angle in Deg	0-Deg cd/sm	45-Deg cd/sm	90-Deg cd/sm
45	1792	1982	2153
55	1650	1989	2272
65	1499	2000	2389
75	1308	2048	2543
85	1157	2066	2413

Candela

Angle	0-Deg	23-Deg	45-Deg	68-Deg	90-Deg
0	1439	1439	1439	1439	1439
5	1442	1430	1436	1434	1434
10	1419	1408	1417	1416	1417
15	1380	1372	1385	1388	1390
20	1327	1323	1341	1344	1350
25	1260	1260	1282	1291	1298
30	1179	1184	1214	1231	1240
35	1086	1097	1139	1166	1180
40	986	1003	1057	1100	1121
45	880	903	973	1032	1057
50	769	800	886	959	987
55	657	693	792	875	905
60	549	587	692	780	809
65	440	483	587	673	701
70	334	380	479	558	582
75	235	281	368	437	457
80	147	187	257	299	299
85	70	100	125	142	146
90	0	0	0	0	0