

INSTALLATION INSTRUCTIONS

RECESSED HOUSING COMPATIBILITY

- The LR6™ LED Downlight Series is designed to install into any Cree six-inch GU24 base housing and other six-inch recessed downlight housings, converted for use with a GU24 base. For a list of compatible housings, refer to www.cree.com/lighting. If existing recessed housing is provided with an edison based socket then order the GU24 whip, Model GU24 Adapter, from Cree.
- Compatibility of housings not on this list may be determined by measurement of the housing as detailed in the attached drawing (Figure 1). To ensure compatibility, a test installation should be completed.

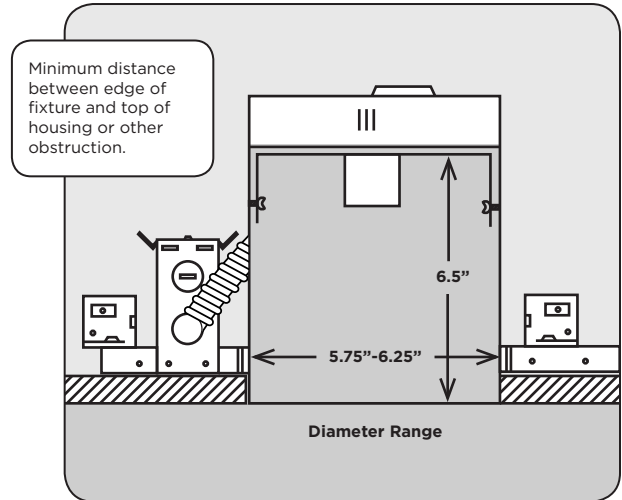
IMPORTANT SAFETY INFORMATION

Read all instructions before installation

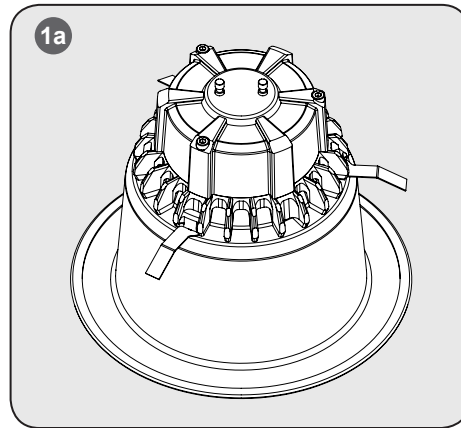
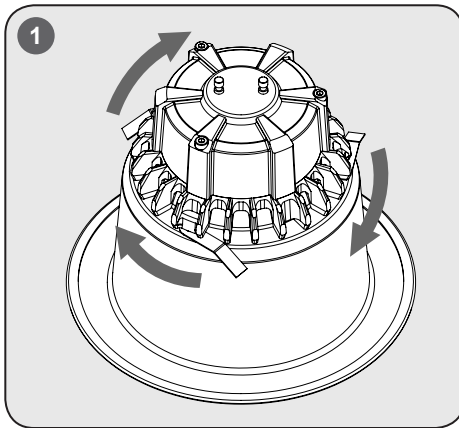
WARNING - Risk of Electric Shock. Disconnect power at fuse or circuit breaker before installing or servicing. To prevent wiring damage or abrasion, do not expose wiring to the edges of sheet metal or other sharp objects. Do not make or alter any open holes in a enclosure of wiring or electrical components during installation.

Note: (1) It is necessary to remove the socket and install the GU24 whip if fixture doesn't contain a GU24 socket. (2) Not all existing recessed housings that meet these requirements will be compatible with the LR6. To ensure compatibility, a test installation should be completed.

FIGURE 1



TO INSTALL:



STEP 1:

Remove fixture from the packaging and rotate the "Flip Clips" clockwise until the clips are oriented directly away from the fixture. This position is the "installation ready" position (a).

STEP 2:

Make sure the power is turned off at the source to the recessed housing(s) that you are installing the fixture(s) in. If installing into Cree housing, skip to STEP 5.

STEP 3:

Once power has been turned off, remove existing trim and CFL, or Incandescent, bulb revealing the existing socket.

STEP 4a:

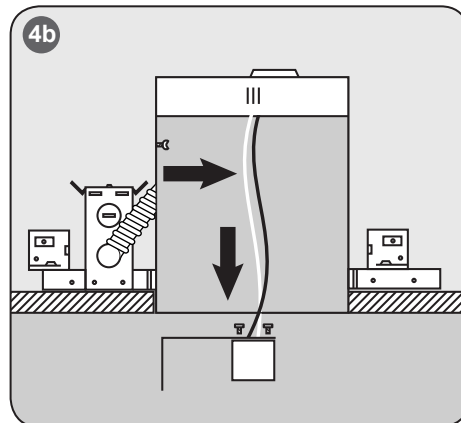
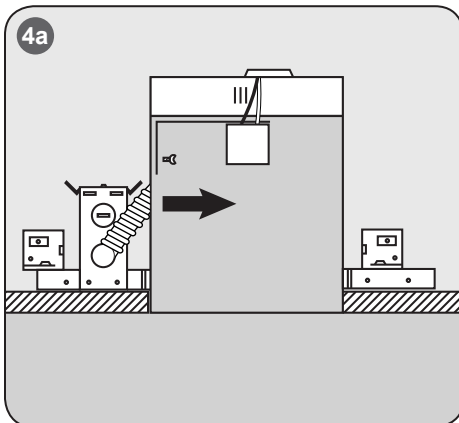
Locate the socket in your existing recessed housing and remove any screws that prevent the socket bracket from being removed.

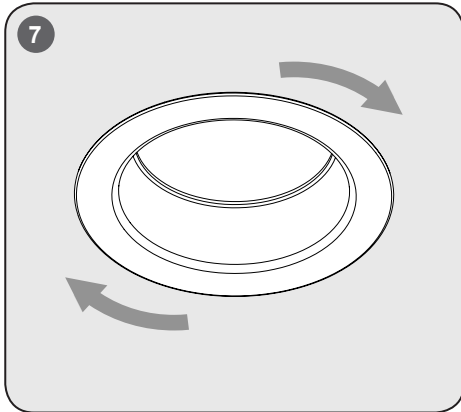
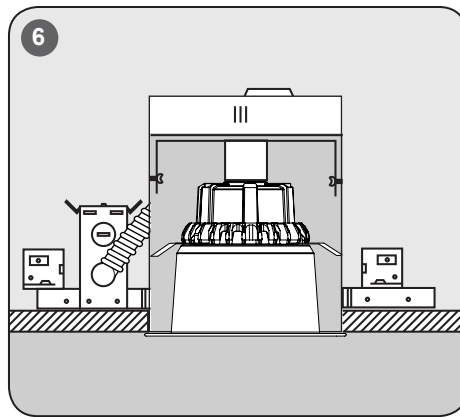
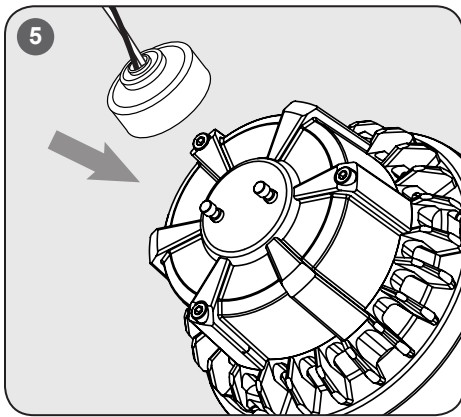
STEP 4b:

Pull socket assembly, including the bracket, as low as possible given the existing wire length available. (May require socket plate removal) Remove any excess bracketry from socket.

STEP 4c:

If converting the existing socket from an edison-style socket to a GU24-style socket, proceed to Step A under "GU24 installation" below.





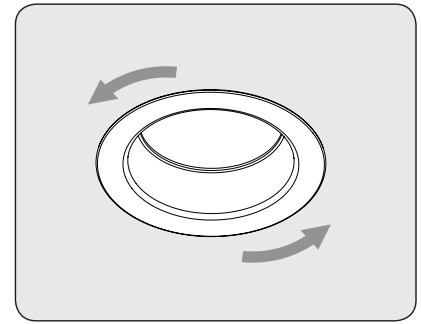
STEP 5:
Attach LR6 to recessed housing socket. Screw LR6 into the socket by turning clockwise.

STEP 6:
Slide LR6 with clips, in ready position, up into the recessed housing until trim ring is flush with ceiling.

STEP 7:
Rotate LR6 Fixture 1/4 turn clockwise to lock clips into position. Your LR6 fixture should now be securely installed into the ceiling. Turn power on and enjoy.

REMOVAL OF LR6 SERIES

NOTE: Make sure power to fixture is removed before attempting to disconnect LR6 module from fixture.

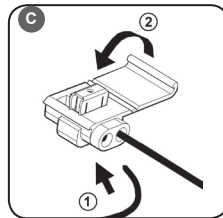
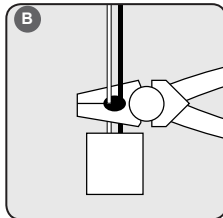
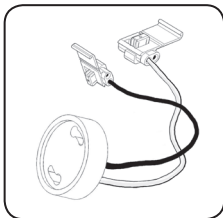


STEP 1:
To remove LR6 module, grip firmly on the trim ring and rotate 1/4 turn counterclockwise to unlock clips from recessed can.

STEP 2:
Continue to turn counterclockwise as you pull downward on the LR6. This will disengage the clips allowing the LR6 to pull free.

STEP 3:
Detach LR6 from recessed housing socket.

GU24 INSTALLATION (WHERE REQUIRED)



STEP A: Remove GU24 connector cable from package.

STEP B: To assemble GU24 whip (shown above) cut wires on back side of existing socket. No stripping is required from remaining leads.

STEP C: Insert the input wires into the Insulation Displacement Connectors provided on the GU24 Socket whip and clamp down on the metal

u-connector until flush with the top of the plastic insulator.

STEP D: Close plastic hinged cover and snap lock.

STEP E: Place "Original Luminaire Modification Marking" label inside recessed housing adjacent to existing relamp label.

STEP F: Continue with recessed conversion installation.

NOTE: This device is not intended for use with emergency exit fixtures or emergency exit lights.

CREE® TRUEWHITE® TECHNOLOGY FIXTURE LIMITED CONSUMER WARRANTY

The limited warranty set forth below is given by the Cree company listed below ("Seller") with respect to the lighting product packaged with this limited warranty (the "Product"). Your Product, when delivered to you in new condition in its original packaging, is warranted against defects in materials or workmanship as follows: for a period of FIVE (5) YEARS from the date of original purchase, defective parts or a defective Product returned with the sales receipt as proof of purchase to Seller, or its authorized service providers, as applicable, and proven to be defective upon inspection, will be repaired, or exchanged for a new Product, as determined by Seller, or the authorized service provider. This limited warranty covers all defects encountered in normal use of the Product, and does not apply in the following cases: Loss of or damage to the Product due to acts of God; fire; vandalism; civil disturbances; power surges; improper power supply; electrical current fluctuations; corrosive environment installations; induced vibration; harmonic oscillation or resonance associated with movement of air currents around the product; abuse; alteration; accident; mishandling; failure to follow operating, maintenance or environmental instructions prescribed by Seller in writing or services performed by someone other than Seller or its authorized service provider. **WARRANTY IS VOID IF PRODUCT IS NOT USED FOR THE PURPOSE FOR WHICH THIS PRODUCT IS MANUFACTURED.** Any complaints you may have regarding the Product should be addressed to Ruud Lighting, Inc., 9201 Washington Avenue, Racine, WI 53406. Seller shall have no liability under this warranty unless Seller is notified in writing within sixty (60) days after your discovery of the defect and the defective items are promptly returned to Seller, freight prepaid, and received by Seller. This warranty excludes field labor and service charges related to the repair or replacement of the product. **NO IMPLIED WARRANTY, INCLUDING ANY IMPLIED WARRANTY OF MERCHANTABILITY OR FITNESS FOR A PARTICULAR PURPOSE, APPLIES TO THE PRODUCT AFTER THE APPLICABLE PERIOD OF THE EXPRESS LIMITED WARRANTY STATED ABOVE, AND NO OTHER EXPRESS WARRANTY OR GUARANTY GIVEN BY ANY PERSON OR ENTITY WITH RESPECT TO THE PRODUCT SHALL BIND SELLER. (SOME STATES AND PROVINCES DO NOT ALLOW LIMITATIONS ON HOW LONG AN IMPLIED WARRANTY LASTS, SO THE ABOVE LIMITATION MAY NOT APPLY TO YOU.)**

LPN000135_B

CREE 

U.S. & Foreign Patents Pending

www.cree.com/lighting