

INSTALLATION INSTRUCTIONS

IMPORTANT SAFEGUARDS

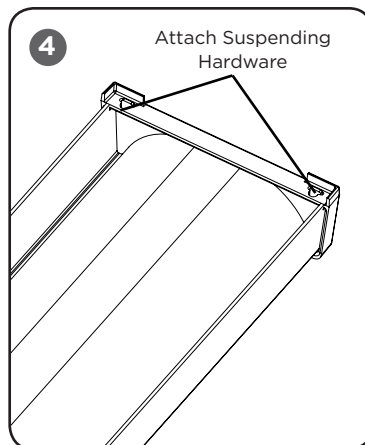
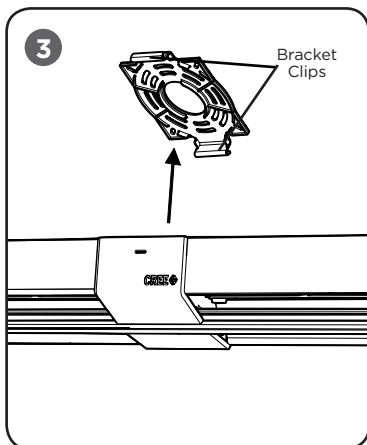
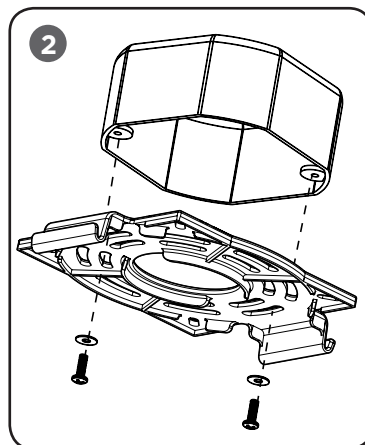
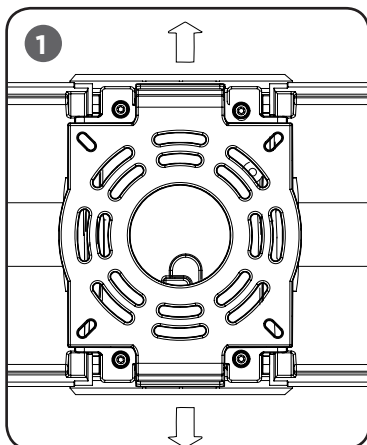
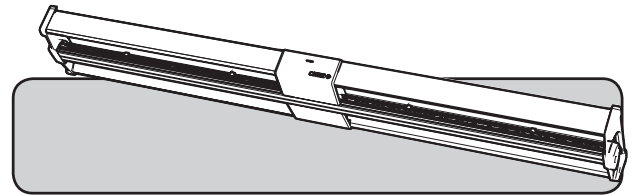
When using electrical equipment, basic safety precautions should always be followed including the following:

READ AND FOLLOW ALL SAFETY INSTRUCTIONS

1. To reduce the risk of electrical shock, turn off power supply before installation or servicing.
2. This luminaire must be installed in accordance with the NEC or your local electrical code. If you are not familiar with these codes and requirements, consult a qualified electrician.

SAVE THESE INSTRUCTIONS FOR FUTURE REFERENCE

TO INSTALL:



NOTE: DO NOT use the center light bar of luminaire as a handle to carry. This will result in damage to luminaire.

CEILING/WALL MOUNT TO EXISTING JUNCTION BOX

STEP 1:

To release the Junction Box Mounting Plate from the luminaire, flex the luminaire center housing slightly. See **Figure 1**.

STEP 2:

Feed wires coming from the existing junction box through the center of the Junction Box Mounting Plate.

STEP 3:

Attach the Junction Box Mounting Plate to the junction box using (2) #6-32 x 1-1/2 screws. See **Figure 2**. Make wire connections per **"Electrical Connection"** section. **NOTE:** After connections are made feed extra wires back through the center hole of the Junction Box Mounting Plate and into the junction box.

STEP 4:

To secure luminaire, gently push the center of the luminaire on to the Junction Box Mounting Brackets clips until it snaps into place. See **Figure 3**.

SUSPENDED MOUNTING

STEP 1:

Using a customer supplied junction box run wires through the hole in the Junction Box Mounting Bracket to the luminaire and make wire connections per **"Electrical Connection"** section.

STEP 2:

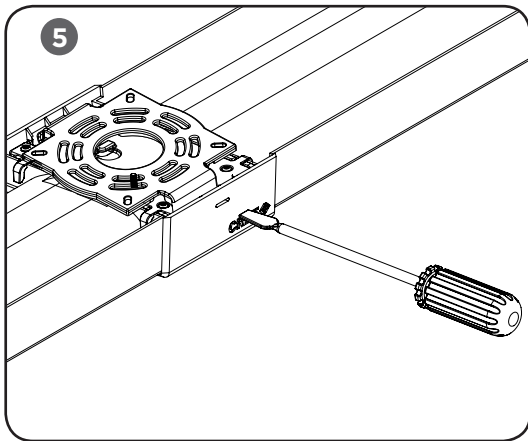
Attach the junction box to the center of the luminaire over the Junction Box Mounting Bracket using (2) #6-32 x 1-1/2 screws

STEP 3:

Attach customer supplied S hooks or chains to the two holes at each end of the luminaire. See **Figure 4**.

STEP 4:

Secure to mounting surface.



TROUBLESHOOTING TIPS

Tips for troubleshooting for junction boxes:

- Verify proper line voltage is present
- Verify that the fixture is grounded

NOTE: If your junction box is not flush with the ceiling it may result in a gap between the fixture and the ceiling or inability to snap the fixture to the bracket.

REMOVAL OF LUMINAIRE

STEP 1:

Insert flat head screwdriver into Slot. See **Figure 5**.

STEP 2:

Gently apply downward force to the flat head screwdriver until luminaire disengages from Junction Box Mounting Bracket.

STEP 3:

Remove luminaire from Junction Box Mounting Bracket.

ELECTRICAL CONNECTIONS

STEP 1:

Make the following Electrical Connections:

- For standard non-dimming 120V supply connect the black fixture lead to the Line position of the junction box using wire nut
- Connect the white fixture lead to the neutral supply position of the junction box using wire nut.
- Connect the (2) green or green/yellow ground wire from the luminaire to the green wire position of the junction box.

