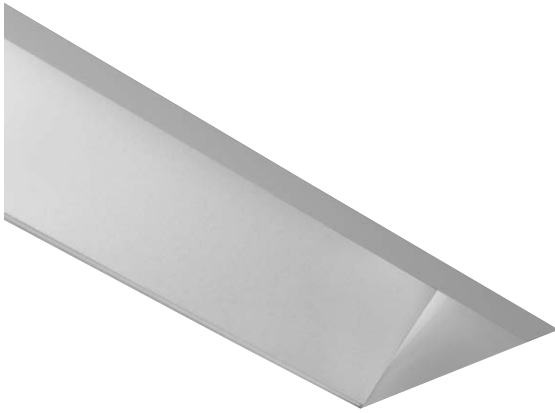


FINELITE

High Performance Wall (HPW-1)



Date

Project

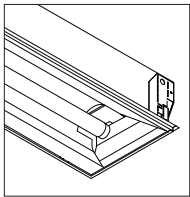
Type

Comments

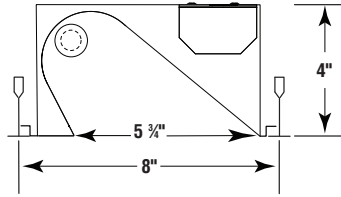
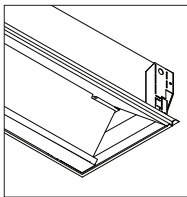
DESCRIPTION

HPW-1 is a high performance, recessed, asymmetric wall wash that delivers uniform vertical illumination for school and office applications. HPW-1 optimizes performance for T8, T5, and T5HO lamps and is available in 2', 4', and 8' section lengths.

Open Optic

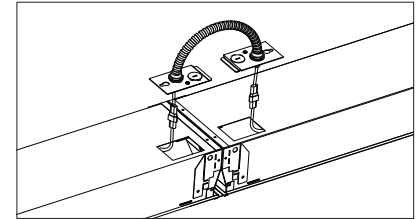


Lens Optic



DIMENSIONS / LAMPING:

Available in 1T8, T5, and T5HO lamps.



QUICK CONNECT HARNESS:

Factory-supplied quick connect harness reduces installed costs.

SHIELDING OPTIONS:

T8 luminaires are available with an optional clear or frosted lens. T5 and T5HO luminaires are standard with frosted lenses. All lenses are UV-stabilized and impact resistant virgin acrylic. Frosted lenses are 0.080" thick and clear lenses are 0.0625" thick.

ORDERING GUIDE

Sample Number: HPW-1 - 4' - FO - 1 T8 - 277 - SC - C1 - IS.88

Finelite Series **HPW-1**

Length (2', 4', or 8')

Lens Optic (FR-Frosted*, CL-Clear, FO-Fully Open)

Lamp Type (1 T8, T5 or T5HO)

Voltage (120, 277, 347V)

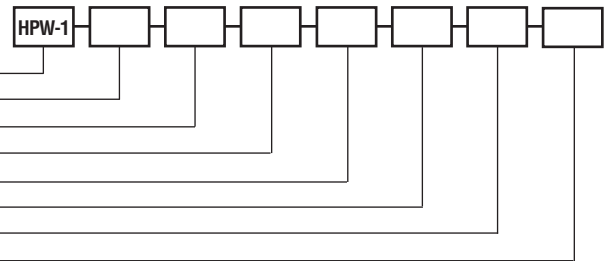
Circuiting (SC-Single Circuit, MC-Multi Circuit, SD-Step Dimming)

Mounting (C1-1" T-Bar, C2-9/16" T-Bar, C3-Screw Slot, DW-Drywall Kit)

Ballast (IS-Instant Start, PS-Program Start, BL-Bi-level, DI-Dimming, and specify BF**)

* T5 or T5HO available in frosted only.

** Standard 0.88 for T8 lamps, 1.0 for T5 or T5HO. Contact factory for available ballast factors.



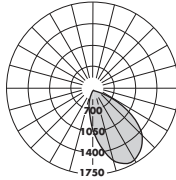
FINELITE

High Performance Wall (HPW-1)

PHOTOMETRY



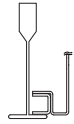
HPW-1: 1 T8 Fully Open (FO)
 Efficiency: 89.2%
 Peak Candela Value: 1685 @ 30°
 LSI Report: 25849



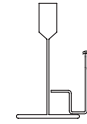
CANDLEPOWER SUMMARY						
	0.0	67.5	45	22.5	90	Flux
0	852	852	852	852	852	
5	841	935	1000	1040	1054	50
10	831	1009	1145	1239	1274	
15	812	1073	1292	1445	1491	176
20	785	1128	1427	1573	1612	
25	750	1174	1498	1636	1682	318
30	706	1210	1519	1659	1685	
35	653	1218	1516	1609	1628	427
40	594	1190	1454	1534	1549	
45	531	1131	1356	1426	1436	471
50	462	1057	1237	1297	1288	
55	391	956	1096	1093	1063	430
60	319	823	918	851	810	
65	248	681	692	595	546	291
70	178	527	451	333	302	
75	113	342	220	134	95	111
80	57	149	49	34	29	
85	18	19	11	9	8	12
90	0	0	0	0	0	

— Refer to www.finelite.com for additional photometry and product information.

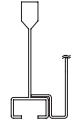
CEILING SYSTEM INFORMATION



9/16" T-Bar

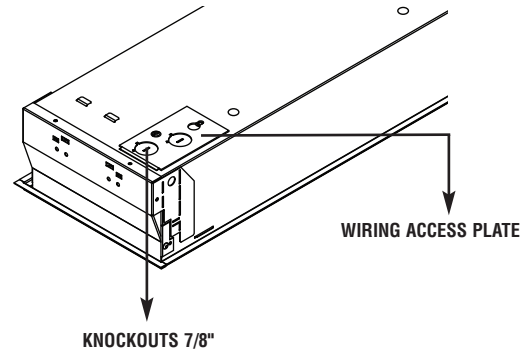


15/16" T-Bar



Screw Slot T-Bar

WIRING ACCESS DETAIL



SPECIFICATIONS

CONSTRUCTION: Fixture assembly constructed using die-formed, 20-gauge, cold-rolled steel housing and ends. Lens and lamps are easily removable from below ceiling without the need for tools. The ballast compartment is also accessible from below ceiling by removing the reflector cover. Seismic brackets are integrated into the fixture assembly.

LUMINAIRE LENGTHS: Luminaires are available in 2', 4', and 8' section lengths and can be joined together with factory supplied plug together wiring harnesses.

SHIELDING OPTIONS: T8 luminaires are available with an optional clear or frosted lens. T5 and T5HO luminaires are standard with frosted lenses. All lenses are UV-stabilized and impact resistant virgin acrylic. Frosted lenses are 0.080" thick and clear lenses are 0.0625" thick.

REFLECTORS: Reflector is die-formed 25-gauge Alanod 8516GP semi-specular aluminum with 94% high reflectance finish.

LAMPING: Available in 1T8, T5, or T5HO lamp cross-sections.

BALLAST: UL listed class P electronic instant-start ballast <10% THD, 0.88 BF standard for T8 Lamps. Electronic program start ballasts <10% THD, 1.0 BF standard for T5/T5HO lamps. Contact factory for available ballast factors. Optional adders: program start ballasts (standard for T5/T5HO), 347v, emergency battery packs, dimming or bi-level ballasts (controls by others).

ELECTRICAL: Luminaires and electrical components are ETL certified to UL and C-UL standards. In accordance with NEC code 410.73 (G) this luminaire contains an internal ballast disconnect. IC-Rated for all lamping. Optional Chicago Plenum available. Contact factory.

MOUNTING: Standard flange design works with most lay-in ceiling types. Integral pry out tabs secure luminaire to ceiling grid. Support to structure locations on

each corner. Consult local code for appropriate support to structure recommendations. Optional drywall kit available.

FEED: 18-gauge wire standard. Quick connect harnesses provided for row configurations.

FINISH: Housing assembly painted with Signal White powder coat finish.

WEIGHT: 2' - 14 lbs, 4' - 18 lbs, 8' - 30 lbs.

 **BUY AMERICAN ACT:** Complies with the Buy American Act of 2009.