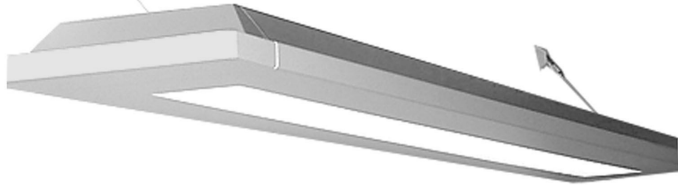


FINELITE

Series 14 Wall Mount Technical Sheet

Now Available



Date

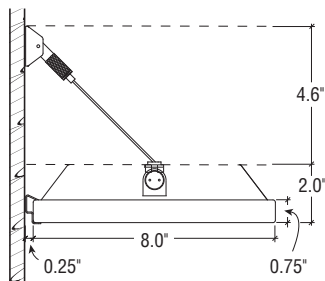
Project

Type

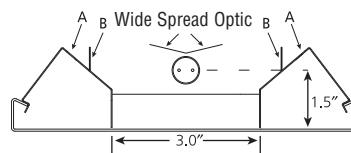
Comments

DESCRIPTION

Series 14 Wall Mount matches the Series 14 pendant luminaire with a stunning ultra sleek profile. Choose from White Cross Blade, Concave Perf, Concave Square, or Diffuse Center Optic downlight shieldings. Available in 1 or 2 T8, or 1, 2 or 3 lamp T5 or T5HO lamp cross sections, 4' and 8' lengths. Clean, contemporary, standard Signal White finish compliments the modern design and brings new elegance to today's architecture.

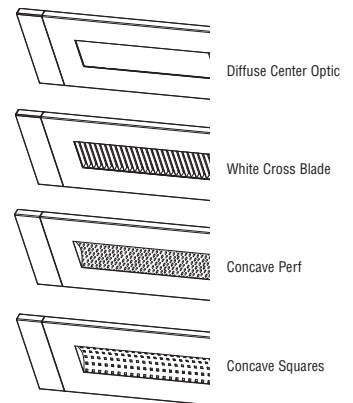


- A - High reflectance custom diffuse anodized aluminum side reflectors
- B - Fully specular side kick reflectors



WSO-WIDE SPREAD OPTICS:

Special wide spread reflector gives extended distribution and is especially effective in low ceiling areas.



SHIELDING OPTIONS:

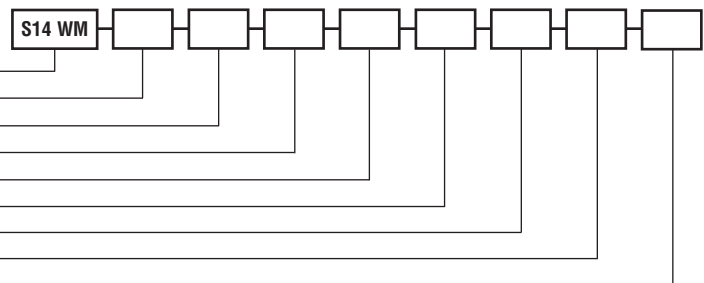
Series 14 Wall Mount offers four shielding options. Diffuse Center Optic, White Cross Blade, Concave Perf or Concave Squares.

DIMENSIONS / LAMPING

The height of the fixture body is 0.75", width 8.0". The overall height to the top of the reflector is 2.0". Available in 1 or 2 T8 or 1, 2, or 3 T5HO lamps.

ORDERING GUIDE

Sample Number: S14 WM - WCB - 32' - 1T8 - SC - AA - 277 - EE - 0.88

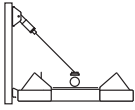


- Finelite Series 14 WM
- Shielding (DCO, WCB, CS, CP)
- Run length (4', 8' multiples standard)
- Number of lamps in cross section (1, 2, T8 or 1, 2, 3 lamp T5 or T5HO)
- Circuiting (SC-single circuit, DC-dual circuit)
- Reflector system (AA, EP, WSO)
- Voltage (120, 277, 347V)
- Endcap FE (flat), EE (extended)
- Ballast factor (Standard 0.88 for T8 lamps, 1.0 for T5 or T5HO)

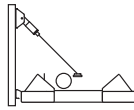
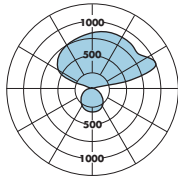
FINELITE

Series 14 Wall Mount Technical Sheet

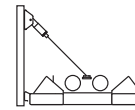
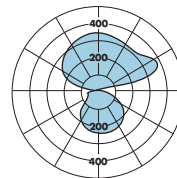
PHOTOMETRY



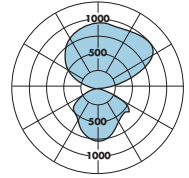
S14WM: 1 T5HO-WCB-EP
Efficiency: 89.3%
Peak Candela Value: 1037@ 115°
LSI Report: 17991



S14WM: 1 T8-WCB-EP
Efficiency: 82.7%
Peak Candela Value: 511@ 115°
LSI Report: 17993



S14WM: 2 T8-WCB-EP
Efficiency: 84.8%
Peak Candela Value: 1023@ 135°
LSI Report: 17994



CANDLEPOWER SUMMARY						
	0.0	22.5	45.0	67.5	90.0	Flux
0	370	370	370	370	370	
5	361	363	365	369	368	18
15	317	323	330	352	356	47
25	256	264	280	316	330	66
35	186	199	222	270	292	72
45	119	128	156	210	241	65
55	80	87	97	147	176	51
65	51	57	61	83	98	34
75	26	31	33	40	34	18
85	4	8	7	12	9	5
90	0	0	0	0	0	
95	21	113	0	0	0	45
105	128	340	673	810	748	283
115	273	458	676	930	1037	336
125	422	549	708	832	911	310
135	559	655	764	868	894	291
145	677	765	817	889	904	255
155	771	827	864	906	913	198
165	834	869	892	910	911	125
175	865	879	881	884	883	43
180	870	870	870	870	870	

CANDLEPOWER SUMMARY						
	0.0	22.5	45.0	67.5	90.0	Flux
0	331	331	331	331	331	
5	325	328	329	335	336	16
15	286	298	310	332	340	44
25	231	248	273	317	336	64
35	172	192	224	287	315	74
45	115	128	164	239	269	70
55	79	87	98	173	199	56
65	50	56	60	100	133	38
75	26	31	31	47	68	21
85	5	9	7	14	10	6
90	0	0	0	0	0	
95	20	71	35	54	34	32
105	98	187	300	358	321	135
115	185	248	365	477	511	176
125	272	319	380	444	477	170
135	352	380	404	426	425	154
145	408	427	427	436	425	133
155	448	453	450	449	441	104
165	470	470	468	465	459	66
175	475	475	474	472	470	23
180	474	474	474	474	474	

CANDLEPOWER SUMMARY						
	0	22.5	45	67.5	90	Flux
0	792	792	792	792	792	
5	774	779	779	787	782	37
15	682	684	685	713	715	97
25	552	550	562	618	644	133
35	411	414	439	528	582	146
45	271	277	322	441	551	141
55	188	190	208	366	495	123
65	119	121	128	196	283	81
75	61	64	64	88	127	41
85	13	15	10	21	16	9
90	0	0	0	0	0	
95	36	73	48	61	48	40
105	189	362	374	400	366	187
115	366	542	691	766	740	313
125	540	678	845	959	994	362
135	699	782	909	999	1023	342
145	821	861	937	994	1001	290
155	909	918	943	969	974	218
165	963	965	960	958	954	136
175	983	983	983	984	979	48
180	987	987	987	987	987	

— Refer to www.finelite.com for additional photometry and product information.

SPECIFICATIONS

CONSTRUCTION: Body is 18-gauge die-formed steel with 18-gauge die-formed internal joiner system, plug-together wiring. All components are hard-tooled to tolerances of 0.010".

SHIELDING OPTIONS:

- DCO Diffuse Center Optic, 73% transmissive, 99% diffusion.
- WCB White cross blade baffles.
- CS Concave shield, square perforations.
- CP Concave shield, round perforations.

ENDCAPS: Standard: (FE) Flat endcaps adds 0.1" at each end. Optional: (EE) Extended Endcap, aluminum die-cast endcap, adds 2.5" at each end.

REFLECTORS: (AA) Standard—Anodized aluminum diffuse high-reflectance reflectors. Optional (EP) fully specular side reflectors, (WSO) wide-spread optic system for 1 T5HO. Optional Dust Cover for T8 lamps only. Contact factory. NOTE: Contact factory when using emergency battery packs, 347V, or dimming ballasts with WSO reflectors.

ELECTRICAL: 120 or 277V prewired. Fixture and electrical components are UL/C-UL listed and fixture will bear UL/C-UL labels. Optional Adders: 347V ballasts, prewired dual circuit, emergency circuits, emergency battery packs.

LAMPING: 1 or 2 T8 or 1, 2 or 3 lamp T5 or T5HO lamp cross sections. 1 T8 lamp is on angle. UV-stabilized lamp diffuser standard for T5HO lamps - 0.100 acrylic. Also available without diffuser (open).

BALLAST: Electronic instant start-ballast <10% THD, 0.88 BF standard for T8 lamps. Electronic rapid-start-ballasts <10% THD, 1.0 BF standard for T5/T5HO lamps. Optional adders: rapid-start ballasts (standard for T5/T5HO), 347V, emergency battery packs, dimming ballasts (controls by others). Requires low-profile ballasts and battery packs.

MOUNTING OPTIONS: Nickel plated mounting cleat holding aircraft cable gripper assembly is secured to wall. Steel standoffs painted to match the fixture are positioned at 4' intervals (runs) to hold the fixture 0.25" from the wall.

SUPPORT CABLES: Plated steel cable and hardware. Stainless steel aircraft cable suspends from mounting cleat assembly.

FEED: 18 gauge straight cord. 14 gauge feed cord used when fixture current exceeds 6 amps.

FINISHES: Finelite Signal White standard. 185 colors available from Tiger Drylac's RAL color chart for a nominal adder.

LENGTHS: 4' and 8' section lengths can be combined to make longer runs. Contact factory for additional lengths.

WEIGHT: Fixture weight = 2.0 lb/ft.