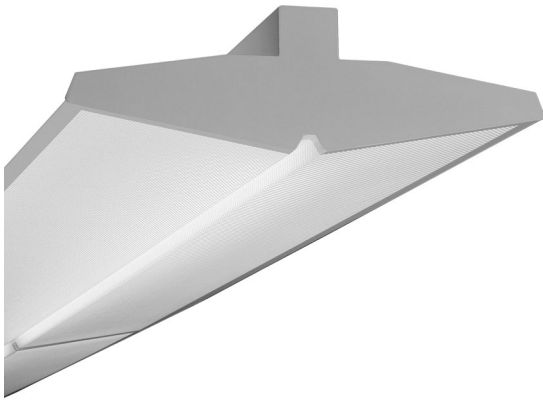


FINELITE

Series 15 Technical Sheet



DESCRIPTION

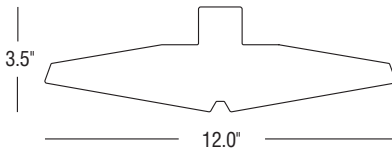
Finelite Series 15 represents an advancement in the art of indirect lighting. The slim, attractive profile delivers unsurpassed performance in low ceiling applications. Available in 1 or 2 T8, T5 or T5HO lamp cross sections, and 2', 3', 4' or 8' lengths. Series 15 combines a unique open cavity, double diffuser optical design with 96% reflective white paint in order to maximize fixture efficiency and performance. This product uses patented Constructive Occlusion® technology.

Date

Project

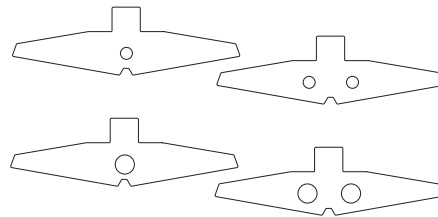
Type

Comments



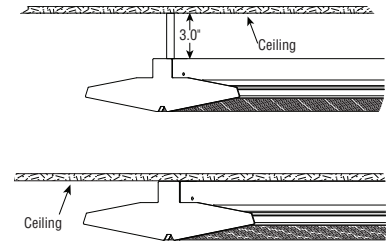
DIMENSIONS:

The height of the fixture body is 3.5", width 12.0".



LAMPING:

Available in 1, or 2 T8, T5 or T5HO lamps.



OPTIONAL STEM AND SURFACE MOUNT:

Optional Stem Mount (SS) and Surface Mount (SUR) available. Contact factory for requirements.

ORDERING GUIDE

Sample Number: S15 - 32' - 1T5HO - SC - 277 - FA - C1 - 0.88

Finelite **Series 15**

Run length (2', 3', 4', 8' multiples standard)

Number of lamps in cross section (1, 2, T8, T5 or T5HO)

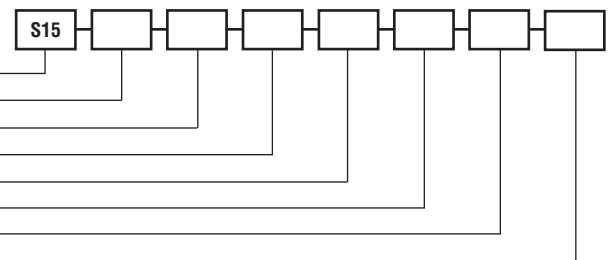
Circuiting (SC-single circuit, DC-dual circuit)

Voltage (120, 277, 347V)

Mounting (FA/SS/SUR)

Ceiling type (C1-1" T-bar, C2-9/16" T-bar, C3-Slot Grid, C4-Hard Ceiling)

Ballast factor (Standard 0.88 for T8 lamps, 1.0 for T5 or T5HO)



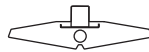
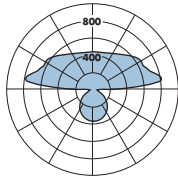
FINELITE

Series 15 Technical Sheet

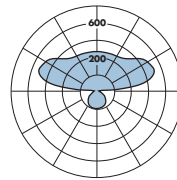
PHOTOMETRY



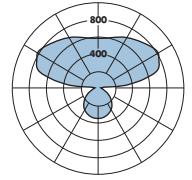
S15: 1 T5HO
 Efficiency: 81.9%
 Peak Candela Value: 732@ 105°
 LSI Report: 18033



S15: 1 T8
 Efficiency: 73.4%
 Peak Candela Value: 514@ 105°
 LSI Report: 18056



S15: 2 T8
 Efficiency: 71.2%
 Peak Candela Value: 838@ 125°
 LSI Report: 18057



CANDLEPOWER SUMMARY						
	0.0	22.5	45.0	67.5	90.0	Flux
0	371	371	371	371	371	
5	369	370	370	370	370	36
15	348	349	353	355	354	99
25	309	313	317	324	324	146
35	258	265	272	279	279	169
45	197	202	214	218	222	162
55	129	136	149	156	157	130
65	69	75	87	93	95	84
75	29	33	42	47	48	44
85	3	11	33	47	76	50
90	1	41	149	162	225	
95	24	209	493	651	668	401
105	100	338	480	653	732	498
115	181	333	531	604	641	468
125	257	329	486	600	629	416
135	320	356	447	530	560	344
145	369	389	435	480	502	273
155	405	412	435	454	464	201
165	428	429	437	442	444	124
175	442	438	439	437	436	42
180	439	439	439	439	439	

CANDLEPOWER SUMMARY						
	0	22.5	45	67.5	90	Flux
0	168	168	168	168	168	
5	166	167	167	167	167	16
15	159	160	161	161	163	45
25	144	146	149	152	153	68
35	122	126	131	134	134	81
45	95	98	105	108	108	79
55	63	67	74	76	79	64
65	31	34	40	44	45	39
75	10	14	18	22	23	19
85	1	4	13	22	26	20
90	0	18	50	64	75	
95	19	131	225	274	298	202
105	67	212	367	476	514	347
115	121	194	351	459	493	324
125	170	207	289	386	419	264
135	212	232	276	320	340	214
145	244	257	282	303	312	176
155	270	274	287	298	304	132
165	286	287	292	294	296	82
175	294	293	294	292	293	28
180	293	293	293	293	293	

CANDLEPOWER SUMMARY						
	0	22.5	45	67.5	90	Flux
0	382	382	382	382	382	
5	378	379	379	380	381	37
15	361	363	366	367	369	103
25	326	330	335	340	342	154
35	277	284	292	299	299	181
45	213	220	233	240	244	177
55	139	149	164	173	177	144
65	68	76	95	101	106	89
75	21	30	41	46	50	42
85	2	9	24	44	52	36
90	0	33	80	99	116	
95	28	186	291	357	387	276
105	123	365	570	705	749	532
115	232	395	647	788	826	583
125	336	442	628	786	838	547
135	423	495	623	733	776	474
145	495	538	628	693	722	387
155	548	567	619	661	680	285
165	584	589	609	625	633	172
175	603	602	604	601	603	58
180	603	603	603	603	603	

— Refer to www.finelite.com for additional photometry and product information.

SPECIFICATIONS

CONSTRUCTION: Body is 18-gauge die-formed steel. Die-formed 0.062" perforations cover the surface of the steel downlight shielding. All components are hard-tooled to tolerances of 0.010".

ENDCAPS: (FE) Flat Endcap standard, die-formed steel, painted to match fixture, adds 0.1" at each end.

OPTICAL SYSTEM: Finelite innovation Series 15 open cavity double diffuser optical system with 96% reflective white paint. This product uses patented Constructive Occlusion® technology.

REFLECTORS: (96W) Standard—96W painted high-reflectance reflectors.

ELECTRICAL: 120 or 277V prewired. Fixture and electrical components are UL/C-UL listed and fixture will bear UL/C-UL labels. Optional Adders: 347V ballast, prewired dual circuit, emergency circuits, emergency battery packs. Contact factory on Dual Circuit (DC) for 2' and 3' lengths.

LAMPING: Available in 1 or 2 T8, T5, or T5HO lamp cross sections.

BALLAST: Electronic instant-start ballast <10% THD, 0.88 BF standard for T8 lamps. Electronic rapid-start ballasts <10% THD, 1.0 BF standard for T5/T5HO lamps. Optional adders: rapid-start ballasts (standard for T5/T5HO), 347V, emergency battery packs, dimming ballasts (controls by others). Requires low-profile ballasts and battery packs.

MOUNTING OPTIONS: Standard pendant mounting is fully adjustable aircraft cable (FA), adjusts suspension from 3" to 150". Optional Adders: adjustable aircraft cable (AC) lengths from 51" to 150"; Stem Mount (SS) 3" metal stem; Surface Mount (SUR) flush to ceiling. Additional stem lengths available for hard ceilings only. Contact factory.

SUPPORT CABLES: Plated steel cable and hardware.

FEED: Pendant: 18 gauge straight cord. 14 gauge feed cord used when fixture current exceeds 5 amps. Feed is 1.5" from end of fixture.

FINISHES: Finelite Brite White Standard, 96% reflective.

LENGTHS: 4' and 8' section lengths can be combined to make longer runs. Contact factory for 2' and 3' lengths.

WEIGHT: Fixture weight = 2.0 lb/ft.

WALL MOUNT: Matching Series 15 Wall Mount available. See S15WM Technical Sheet.