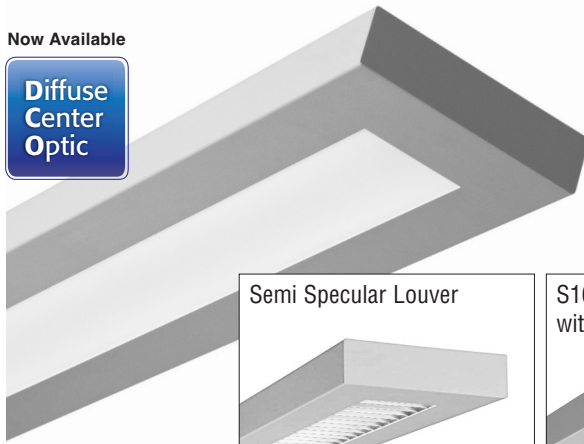


FINELITE

Series 16 Technical Sheet

Now Available

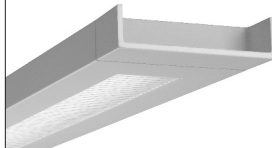
Diffuse
Center
Optic



Semi Specular Louver



S16 with extended endcap with white cross blade



DESCRIPTION

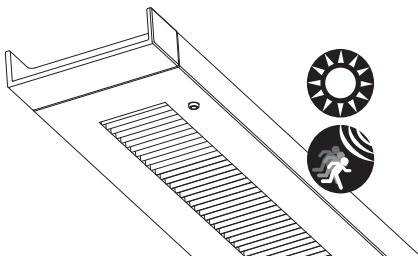
Series 16 is a low profile rectilinear form scaled to blend inconspicuously into any interior architecture. At just 7.6" by 1.9" this luminaire integrates exceptionally well into low ceiling environments.

Date

Project

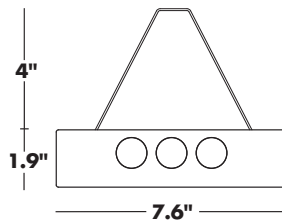
Type

Comments



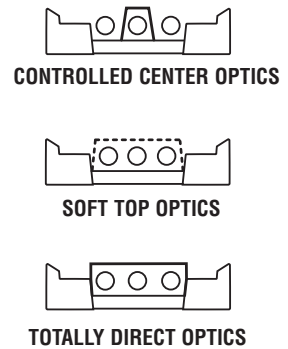
INTEGRATED SENSORS:

Series 16 can be specified with integrated daylight or occupancy sensors.



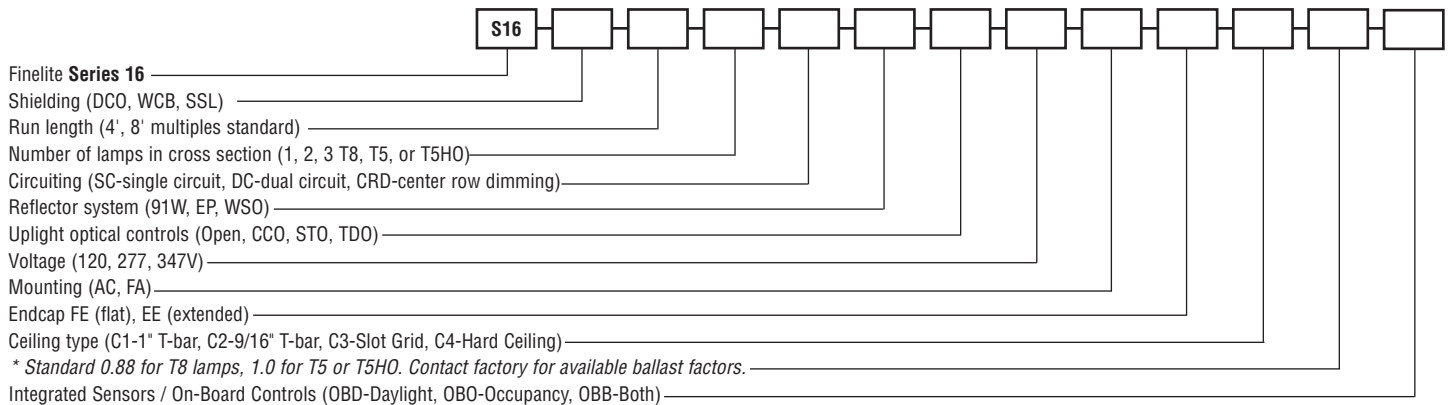
DIMENSIONS / LAMPING:

Available in 1, 2, or 3 T8, T5 or T5HO lamps.



ORDERING GUIDE

Sample Number: S16 - WCB - 32' - 2T8 - SC - 91W - TDO - 277 - FA - C1 - FE - 0.88 - OBD



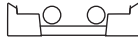
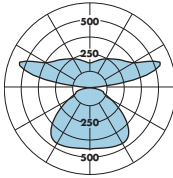
FINELITE

Series 16 Technical Sheet

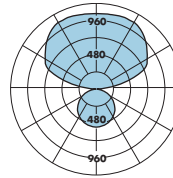
PHOTOMETRY



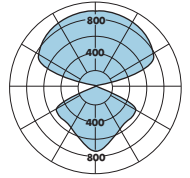
S16: 1 T8-WCB-WSO
 Distribution: 59% Up / 41% Down
 Efficiency: 83.8%
 Peak Candela Value: 473@ 105°
 LSI Report: 21895



S16: 2 T8-DCO-91W-Open
 Distribution: 72% Up / 28% Down
 Efficiency: 89.7%
 Peak Candela Value: 1094@ 165°
 LSI Report: 29710



S16: 2 T8-WCB-91W-Open
 Distribution: 68% Up / 32% Down
 Efficiency: 87.5%
 Peak Candela Value: 888@ 165°
 LSI Report: 21524



CANDLEPOWER SUMMARY						
	0	22.5	45	67.5	90	Flux
0	431	431	431	431	431	
5	423	424	427	428	428	41
15	375	384	401	425	438	114
25	308	322	365	415	450	170
35	232	247	305	390	449	199
45	161	169	225	316	379	188
55	113	117	137	200	251	143
65	74	76	84	108	130	93
75	42	42	45	55	90	54
85	13	12	13	14	19	16
90	0	0	0	0	0	
95	18	110	106	82	75	107
105	66	148	360	455	473	313
115	117	175	287	394	432	284
125	161	204	280	322	319	234
135	193	224	262	283	278	194
145	204	222	243	251	247	148
155	201	210	221	223	221	100
165	192	193	196	197	195	56
175	179	177	177	177	177	17
180	173	173	173	173	173	

CANDLEPOWER SUMMARY						
	0	22.5	45	67.5	90	Flux
0	547	547	547	547	547	
5	545	543	544	546	543	52
15	525	523	524	527	524	148
25	486	484	487	495	493	225
35	428	427	436	442	442	272
45	358	360	368	373	373	282
55	278	283	285	286	285	253
65	197	196	195	194	193	193
75	119	108	107	106	104	114
85	30	29	27	26	25	32
90	0	0	0	0	0	
95	37	104	104	97	94	112
105	200	328	459	464	463	414
115	383	514	633	750	783	609
125	562	673	781	851	882	677
135	726	798	910	967	990	681
145	864	906	996	1052	1070	612
155	973	991	1045	1083	1093	478
165	1048	1051	1073	1085	1094	302
175	1088	1080	1085	1082	1084	105
180	1084	1084	1084	1084	1084	

CANDLEPOWER SUMMARY						
	0	22.5	45	67.5	90	Flux
0	776	776	776	776	776	
5	760	759	759	751	747	72
15	669	651	654	663	669	185
25	539	523	547	590	615	257
35	395	393	442	520	572	287
45	268	276	332	445	547	282
55	186	190	219	374	551	257
65	119	121	137	230	429	189
75	63	64	72	99	188	97
85	16	19	23	29	37	28
90	0	0	0	0	0	
95	41	94	92	82	79	102
105	188	307	409	414	415	374
115	354	461	598	694	717	561
125	516	601	713	779	801	615
135	659	721	797	838	841	599
145	764	801	843	874	876	522
155	836	859	872	883	885	401
165	877	883	891	888	888	251
175	889	880	883	886	888	86
180	881	881	881	881	881	

— Refer to www.finelite.com for additional photometry and product information.

SPECIFICATIONS

CONSTRUCTION: Body is 20-gauge die-formed steel with 18-gauge die-formed internal joiner system, plug-together wiring standard. All components are hard-tooled to tolerances of 0.010".

ENDCAPS: (FE) Flat endcap standard, 14 gauge die-formed steel, adds 0.1" at each end. Optional: (EE) Extended Endcap, aluminum die-cast endcap with 0.100" reveal, adds 2.5" at each end.

REFLECTORS: (91W) Die-formed pre-painted aluminum, 91% reflective white. Optional: (EP) Extended Performance reflector system (1T5HO only). (WSO) Wide Spread Optic for 1T8 or 1T5HO. Optional Dust Cover for T8 lamps only. Contact factory.

UPLIGHT OPTICAL OPTIONS:

- Open No optical control.
- CCO Controlled Center Optics, covers center lamp, 100% downlight (center only); 96% reflective white paint.
- STO Soft Top Optics, 0.063 perforations cover the top surface; 96% reflective white paint.
- TDO Totally Direct Optic, solid top above lamps, 0/100; 96% reflective white paint.

SHIELDING OPTIONS:

- DCO Diffuse Center Optic, 73% transmissive, 99% diffusion.
- WCB White Cross Blade Baffle, 87 cell baffles spaced 0.5" apart and finished with 96% reflective white paint.

SSL Semi Specular Louver, 44 cell louvers spaced 1.0" apart.

ACCESSORY: Optional Dust Cover, clear acrylic, T8 lamps only. NOTE: Will significantly impact light level performance. Contact Factory.

ELECTRICAL: 120 or 277V prewired. Fixture and electrical components are UL/C-UL listed and fixture will bear UL/C-UL labels. Optional Adders: Low-profile 347V ballast, prewired dual circuit, emergency circuits, low-profile emergency battery packs. Contact factory.

INTEGRATED SENSORS: Series 16 can be specified with integrated sensors from Wattstopper, Philips, and Lutron. **Daylight Sensors:** Wattstopper sensors can be supplied with either a closed loop 0-10v dimming (handheld remote supplied) or closed loop single zone switching system. The Lutron sensor is directional and for use with Ecosystem ballasts. The Philips sensor is a closed loop 0-10v sensor for use with Advance Mark 7 ballasts. **Occupancy Sensor:** Wattstopper occupancy sensor is a PIR sensor with additional hold-off daylight feature.

LAMPING: Available in 1, 2 or 3 T8, T5 or T5HO lamp cross sections.

BALLAST: Electronic instant-start ballast <10% THD, 0.88 BF standard for T8 lamps. Electronic rapid-start ballasts <10% THD, 1.0 BF standard for T5/T5HO lamps. Optional adders: rapid-start ballasts (standard

for T5/T5HO), 347V, emergency battery packs, dimming ballasts (controls by others). Requires low-profile ballasts and battery packs.

MOUNTING OPTIONS: (FA) 50" fully Adjustable aircraft cable standard with safety stop. Contact factory for additional lengths up to 150". Mounting connects to fixture with factory-installed curved balancer, which allows for side-to-side fixture leveling and locks it into place. Note: Curved balancer assembly is 4" above top of fixture. Optional (AC) semi-adjustable aircraft cable ($\pm 0.5"$) in lengths of 12", 15", 18", 21", 24", 27", 30", and 36".

SUPPORT CABLES: Plated steel cable and hardware.

FEED: 18 gauge straight cord. 14 gauge feed cord used when fixture current exceeds 5 amps. Optional Adders: Coil Cord Feed.

FINISHES: Finelite Signal White standard. Optional Adders: 185 colors available from Tiger Drylac's RAL color chart.

LENGTHS: 4' and 8' section lengths can be combined to make longer runs. Contact factory for additional lengths.

WEIGHT: Fixture weight = 3.0 lb/ft.

WALL MOUNT: Companion wall mount available.