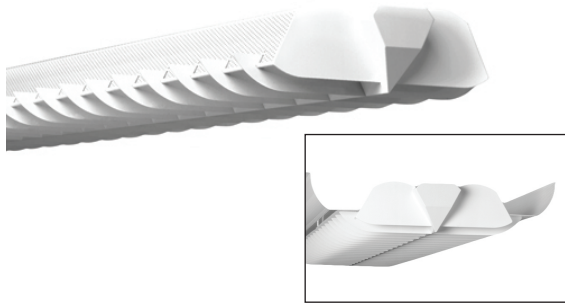


FINELITE

Series 4 - Technical Sheet



Date

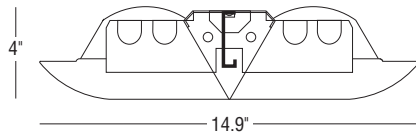
Project

Type

Comments

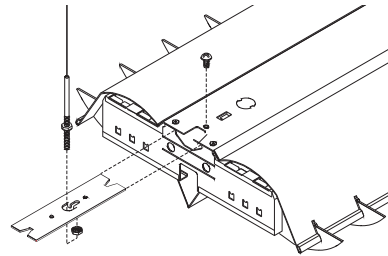
DESCRIPTION

Series 4 is a stylish fixture that delivers excellent controlled downlight illumination for retail spaces, labs, classrooms, and other high ceiling areas. Series 4 has hinged top perforated reflectors, and performs equally well with these reflectors in the open or closed positions. When the reflectors are closed the light distribution is 85% down, 15% up. When the reflectors are open, the result is a striking fixture with approximately a 50/50 distribution that adds a unique architectural element to those hard to light, high ceiling spaces.



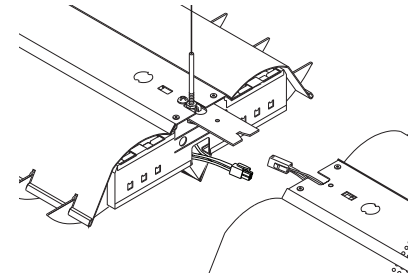
DIMENSIONS / LAMPING:

Available in 2 or 4 T8 lamp cross sections.



JOINING INSTRUCTIONS:

Install the self-aligning joiner bracket. Install the aircraft cable at the ceiling. Fasten the aircraft cable into the opening of the joiner bracket. (Fully adjustable aircraft systems and stem mounting are available for a nominal adder.)

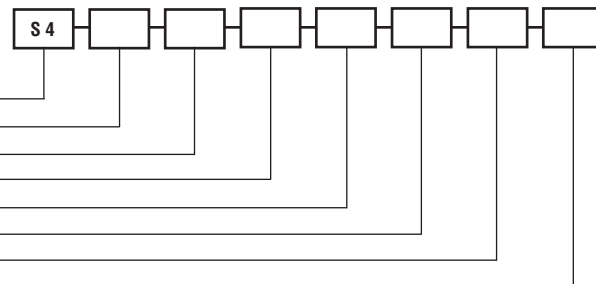


PLUG-TOGETHER WIRING:

Bring up the joiner fixture, plug wires together using Finelite's standard plug together wiring and slide wires back into ballast compartment.

ORDERING GUIDE

Sample Number: S4 - 32' - 2T8 - SC - 91W - 277 - AC 18" - C1



- Finelite **Series 4** _____
- Run length (4', 8' multiples standard) _____
- Number of lamps in cross section (2, 4 T8) _____
- Circuiting (SC-single circuit, DC-dual circuit) _____
- Reflector system (91W) _____
- Voltage (120, 277, 347V) _____
- Mounting (AC, FA, Stem) _____
- Ceiling type (C1-1" T-bar, C2-9/16" T-bar, C3-Slot Grid, C4-Hard Ceiling) _____

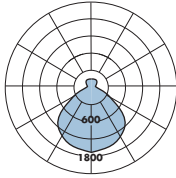
FINELITE

Series 4 - Technical Sheet

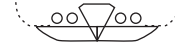
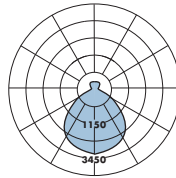
PHOTOMETRY



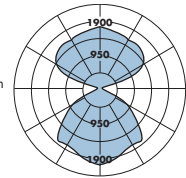
S4: 2 T8 - Closed
 Distribution: 15% Up / 85% Down
 Efficiency: 81.0%
 Peak Candela Value: 1738@ 0°
 LSI Report 45130



S4: 4 T8 - Closed
 Distribution: 16% Up / 84% Down
 Efficiency: 76.3%
 Peak Candela Value: 3338@ 0°
 LSI Report 45131



S4: 4 T8 - Open
 Distribution: 55% Up / 45% Down
 Efficiency: 93.0%
 Peak Candela Value: 2034@ 0°
 LSI Report 45154



CANDLEPOWER SUMMARY						
	0.0	22.5	45.0	67.5	90.0	Flux
0	1738	1738	1738	1738	1738	
5	1717	1728	1724	1722	1722	163
15	1555	1581	1603	1649	1669	455
25	1314	1354	1414	1535	1595	663
35	1040	1093	1192	1370	1466	768
45	742	810	926	1142	1266	746
55	428	501	626	789	839	570
65	254	278	330	418	425	340
75	130	146	170	222	222	189
85	34	51	93	136	130	100
90	2	19	69	109	111	
95	3	19	66	100	99	65
105	20	37	70	96	95	70
115	53	76	97	111	104	90
125	93	109	125	138	133	109
135	128	137	149	160	157	114
145	155	160	165	172	172	104
155	175	177	177	180	177	82
165	185	186	185	184	183	52
175	187	187	186	185	185	18
180	186	186	186	186	186	

CANDLEPOWER SUMMARY						
	0.0	22.5	45.0	67.5	90.0	Flux
0	3338	3338	3338	3338	3338	
5	3301	3313	3307	3305	3310	314
15	2984	3027	3092	3196	3249	876
25	2503	2594	2748	2965	3076	1278
35	1971	2096	2285	2584	2745	1456
45	1387	1537	1724	2022	2188	1359
55	795	936	1105	1394	1488	1021
65	471	507	577	741	761	612
75	241	267	303	369	345	330
85	61	92	148	208	186	158
90	3	30	102	161	155	
95	5	32	101	150	142	99
105	42	68	132	171	163	125
115	107	140	195	232	226	182
125	197	216	254	293	296	226
135	282	289	306	334	340	238
145	349	350	355	366	365	224
155	403	403	400	402	398	185
165	436	435	430	430	428	122
175	449	449	446	443	441	43
180	449	449	449	449	449	

CANDLEPOWER SUMMARY						
	0.0	22.5	45.0	67.5	90.0	Flux
0	2034	2034	2034	2034	2034	
5	2012	2020	2014	2011	2010	191
15	1816	1842	1873	1934	1960	531
25	1521	1574	1648	1779	1841	771
35	1199	1266	1378	1653	1827	908
45	841	919	1130	1409	1575	897
55	501	579	771	1045	1164	717
65	306	331	413	565	607	444
75	155	178	204	292	296	239
85	40	73	104	153	151	118
90	4	55	89	129	130	
95	56	161	120	151	146	160
105	343	533	623	592	505	572
115	665	778	1010	1096	1087	927
125	962	1010	1193	1345	1356	1051
135	1209	1224	1303	1428	1464	1023
145	1410	1408	1428	1468	1485	903
155	1566	1555	1540	1547	1542	715
165	1660	1647	1627	1618	1610	462
175	1697	1691	1679	1670	1668	160
180	1688	1688	1688	1688	1688	

— Refer to www.finelite.com for additional photometry and product information.

SPECIFICATIONS

CONSTRUCTION: Body is 18-gauge die-formed steel with 18-gauge die-formed internal joiner system, plug-together wiring standard. All components are hard-tooled to tolerances of 0.010".

ENDCAPS: Injection molded plastic fascia on 14-gauge die-formed steel base with no exposed fasteners, holes or knockouts.

REFLECTORS: Die-formed prepainted aluminum, (91W). Piano-hinged perforated top reflectors open manually for easy relamping.

SUPPORT CABLES: Plated steel cable and hardware.

MOUNTING OPTIONS: Semi-adjustable aircraft cable, (AC) ± 0.5" in lengths of 12", 15", 18", 21", 24", 27", 30", and 36". Order length, e.g., AC 18". Optional Adders: fully

adjustable aircraft cable (FA) in lengths up to 150". Rigid stems (Stem).

BAFFLE: Injection molded fins, "Georgia Gulf-8150" white special purpose PVC compound. V094 and L5 rated, UV stabilized with anti-static compound added. Subjected to test ASTM D-635.

FINISHES: Prepainted white 91 reflective.

LAMPING: Available in 2 or 4 T8 lamp cross sections.

OTHER OPTIONS: Unlit-blank 4 sections. Consult Factory.

FEED: 18-gauge straight cord. 14-gauge feed cord used when fixture current exceeds 6 amps. Optional Adders: Coil Cord Feed, Rigid Stem Feed.

ELECTRICAL: 120 or 277V prewired. Fixture and electrical components are UL and C-UL listed and fixture will bear UL and C-UL labels. Optional Adders: 347V prewired, dual circuit, emergency circuits, emergency battery packs. Contact factory.

BALLAST: Electronic instant-start ballast <10% THD, 0.88 BF is standard. Specify ballast factor if not standard (contact factory). Optional adders: rapid-start ballasts, 347V, emergency battery packs, dimming ballasts (controls by others).

LENGTHS: 4' and 8' section lengths can be combined to make longer runs.

WEIGHT: Fixture weight = 3 lb/ft.