

# WARNER EW13212

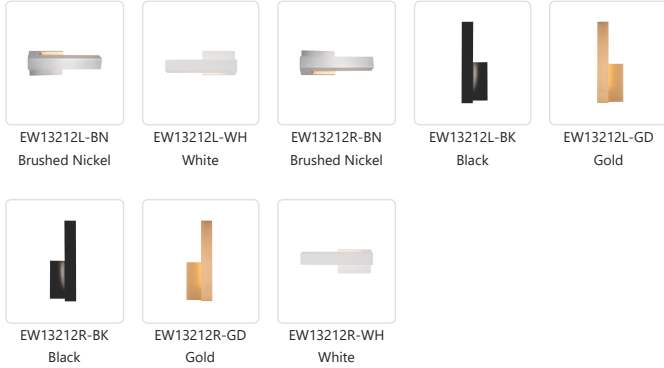
WALL

PROJECT



## DESCRIPTION

Bold and sophisticated the Warner wall sconce is a versatile example of reductive geometric design. The monolithic machined lamp head showcases the refined finish treatment on the substantial planar surfaces. The rectangular backplate is partially illuminated by the light source and serves to augment the material as focal point. Available in two asymmetric designs and multiple mounting orientations the fixture is conditionally adaptive.

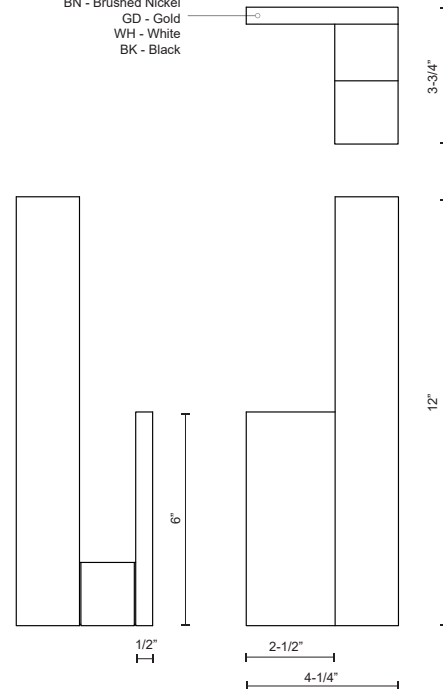


## SPECIFICATION DETAILS

\* For custom options, consult factory for details.

<b>Fixture Dimensions</b>	W4-1/4" x H12" x E3-3/4"
<b>Light Source</b>	LED
<b>Wattage</b>	17W
<b>Total Lumens</b>	1200lm
<b>Delivered Lumens</b>	BN-451lm; GD-398lm; WH-486lm;
<b>Voltage</b>	120V
<b>Color Temperature</b>	3000K
<b>CRI (Ra)</b>	>90
<b>Optional Color Temps</b>	2700K - 5000K Available, Minimum Order Quantities Apply
<b>LED Rated Life</b>	50,000 hours
<b>Dimming</b>	100% - 10%, ELV Dimmer (Not Included)
<b>Diffuser Details</b>	Frosted Glass Diffuser
<b>Location</b>	Wet Location (GD-Gold finish dry location only)
<b>Warranty</b>	5 Years
<b>ADA Compliant</b>	Yes
<b>Canopy Dimensions</b>	W4-1/2" x H6" x E1/2"

Metal Finish  
BN - Brushed Nickel  
GD - Gold  
WH - White  
BK - Black



# KUZCO

19054 28TH AVENUE  
SURREY - BC V3Z 6M3  
CANADA

WWW.KUZCOLIGHTING.COM

COMMENT

