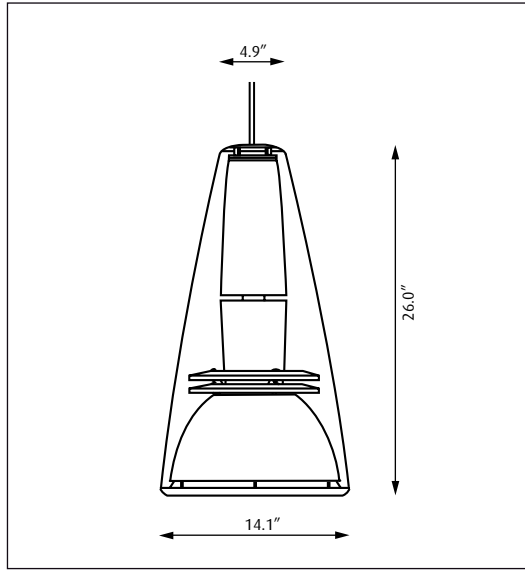


LP Charisma King LED

Design PLH design A/S



18201-11

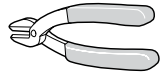
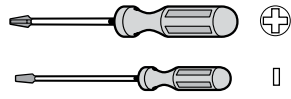
Light source	Spannung/frequenz	Weight	Electric shock protection	Ingress protection
56W LED	120-277V	14.5 lbs	Cl. I	IP 20

Recommended cleaning substances:

Wipe off dust with a dry, soft cloth. Remove greasy spots etc. with a soft cloth dampened in lukewarm water (<122° F/ 50° C) with a mild detergent.

Warning: Scouring powder and similar substances will scratch surfaces.

All installation is subject to local code and jurisdiction. Consult a qualified electrician to ensure correct branch circuit conductor. The installer must ensure that the ceiling can support the luminaire's weight. The installer must if necessary reinforce the ceiling structure by adequate means.

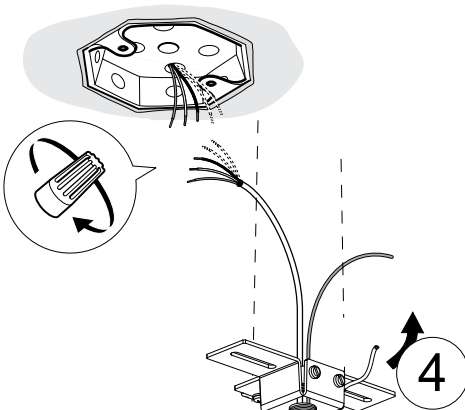


Fixture must be installed at least 3 feet from the ceiling to be serviceable

- Green to Green
- White to White
- Black to Black

Dim versions:

- Red to Violet
- Brown to Grey



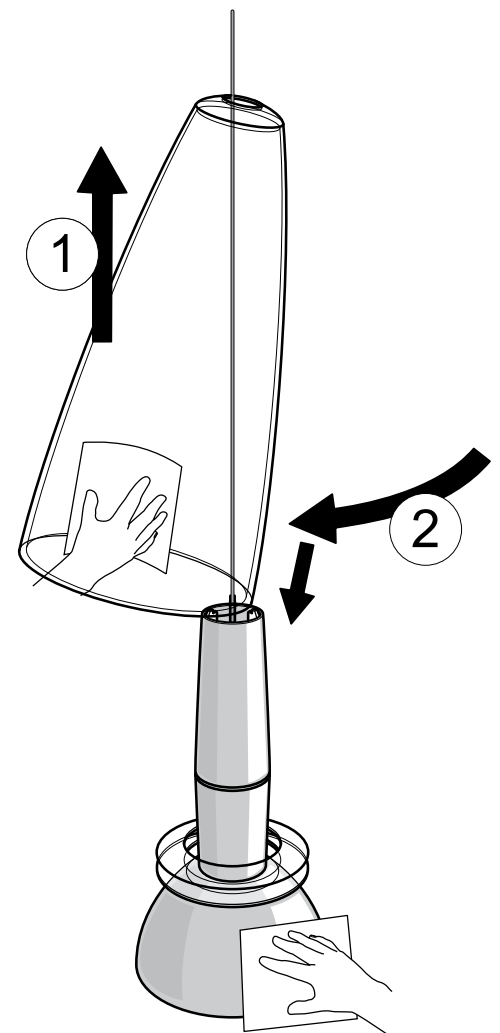
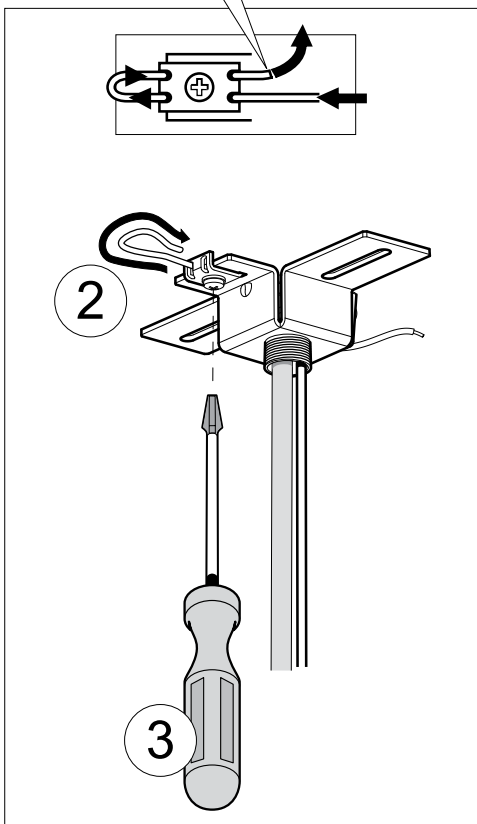
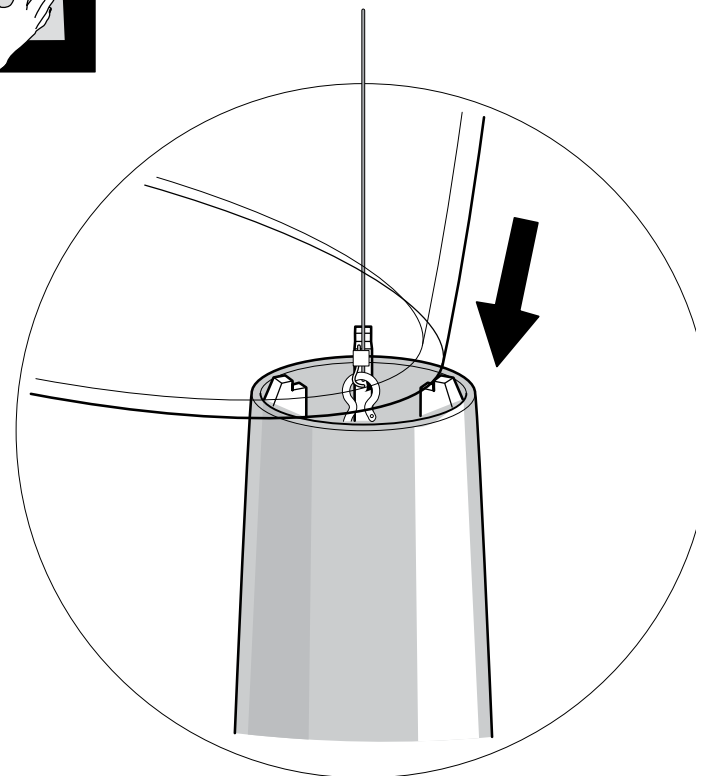
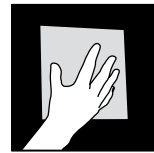
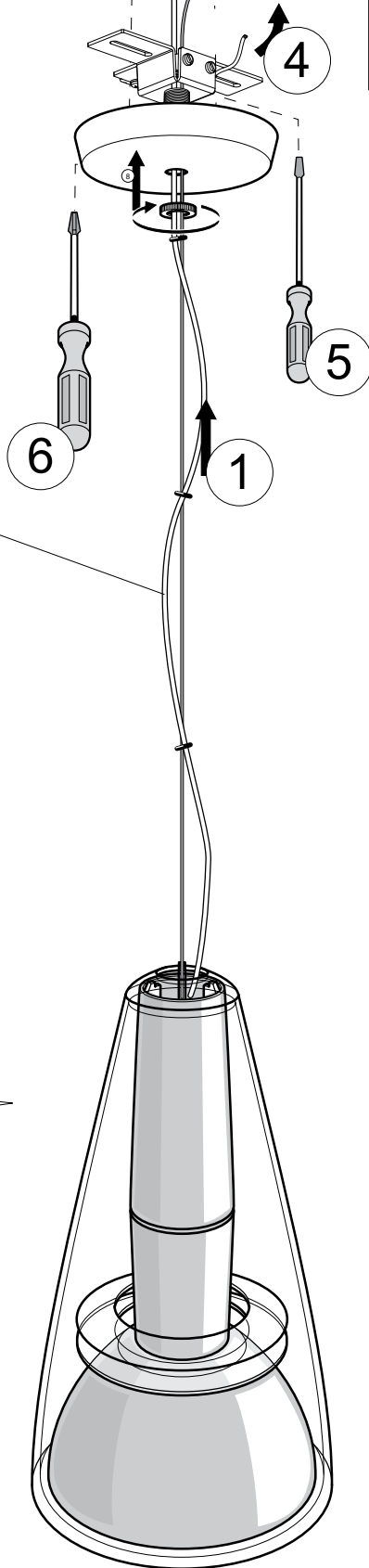
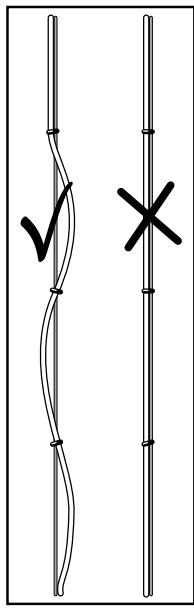
This canopy must be mounted to a standard junction box.

The installer must ensure that the ceiling can support the luminaire's weight.

The installer must if necessary reinforce the ceiling structure by adequate means.

Adjust the position of the Rubber rings.

The installer must ensure that the weight of the luminaire is carried by the steel cable, NOT the luminaire power supply cord.



Mounting Instruction:

- | | |
|--|--|
| 1. Pull steel cable through nut on canopy | 2. Fasten the steel cable in the strain relief |
| 3. Tighten steel cable strain relief with 35-50 lb/in | 4. Pull power supply cord strain relief |
| 5. Tighten power supply cord strain relief with 35-50 lb/in | 6. Mount canopy bracket to junction box |
| 7. Connect the wires as follows: GND (Green to Green) L (Black to Line) N (White to Neutral) | |
| 8. Fasten the canopy to the bracket and tighten the nut | |