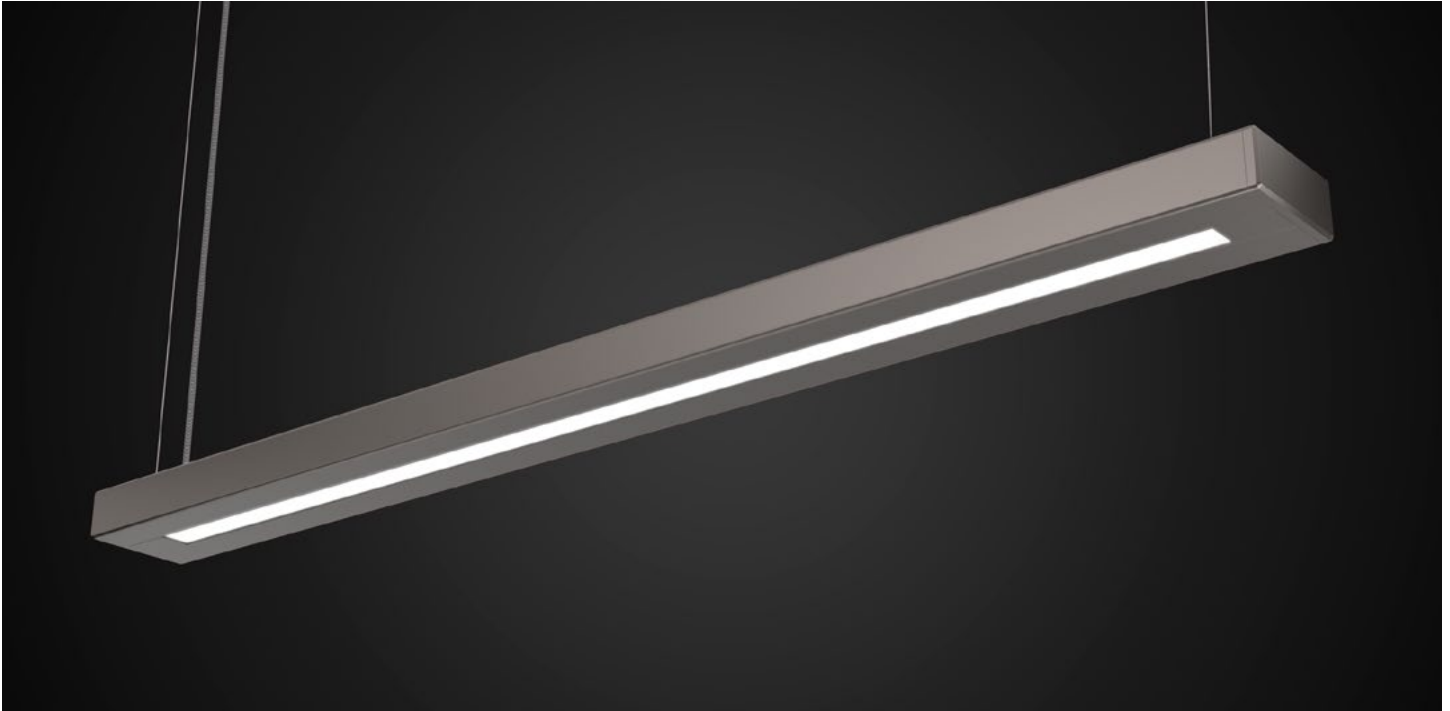


a·light
elements

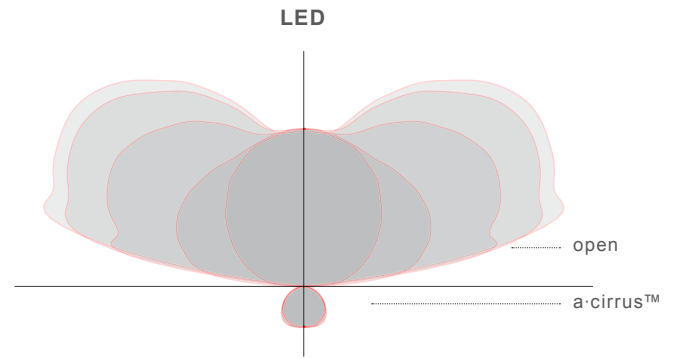
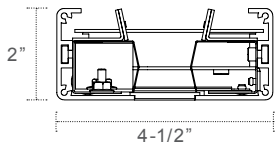


A6
suspended

direct/indirect or direct only



suspended
86% efficient with T5 fluorescent



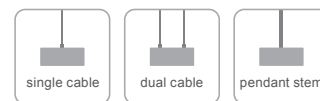
LED	2 boards in cross	
per foot	watts/ft	lumens/ft
LS	10	1200
LH	20	2400

Lumens at board at 4000k.
Consult IES files online for delivered lumens.
Specifications subject to change.

Available Light Platforms:



Available Mounting:



interior

Mounting:

Single or Dual Cable: (1) or (2) 4', 1mm stainless steel aircraft cable w/ fully adjustable grippers and locking device. 5' plastic-coated, silver-braided, flexible cord. Satin white, square canopy is standard.

Pendant/Stem: 3/8" stem and round canopy, painted white. Indicate pendant length. If specified for earthquake zone, a-light will provide swivel canopies.

Lengths:

All length dimensions are nominal, used for general length identification purposes. Actual lengths may vary by several inches. Lengths to 12' are individual fixtures and do not connect. Lengths beginning with "R" designate standard, nominal rows comprised of 4' and/or 8' sections.

Specify all modifications with the "integrations" specification sheet: nominal lengths other than the standards available here, rows longer than 24', exact lengths, etc.

LED:

5yr warranty. >60,000hr LED life. Tested to LM-79 and LM-80. See wattage/lumen table for specifications per foot. All specifications are subject to change.

T5/T5HO:

Single lamp in cross section. Program start is factory standard.

Construction:

60% recycled aluminum extruded housing. Precision milled endcaps.

Finish:

Electrostatically applied powder coat finish.

Listing:

UL/CUL. Damp Location.

Companion Luminaires:

A4 wall

Legend:

1. Emergency ballast not applicable on lengths 3ft or less.
2. Standard multi-circuiting: see fixture chart below.
3. Standard on/off occupancy sensor: Wattstopper FS-205 with minimal 1" diameter.
4. Standard occupancy sensor with photocell: Wattstopper FS-205 wired for daylight harvesting. Requires 0-10V dimming ballast.

Series: A6

Dimension: _____

nominal 2'	¹ 2
nominal 3'	¹ 3
nominal 4'	4
nominal 8'	8
nominal 12'	12
nominal 16' row	R16
nominal 20' row	R20
nominal 24' row	R24

Lamping: _____

LED standard output	LS
LED high output	LH
T5 (1)	S
T5HO (1)	H

LED Temp (if applicable): _____

3000k	30
3500k	35
4000k	40

Voltage: _____

universal 120V - 277V	U
120V	1
277V	2
347V	3

Downlight Optics: _____

a-cirrus™ lens	A
HTLO™ lens	H

Upper Optics: _____

open/no lens	O
80% downlight	E
100% downlight	H

Mounting: _____

single aircraft cable	S
dual aircraft cable	D
pendant / rigid stem - indicate stem length	P__
pendant / rigid stem for earthquake zone - indicate stem length	PV__

Finish: _____

a-lightanium™	T
satin white	W
satin black	B
textured eggshell white	E
other - specify RAL#	O

Options: _____

dimming - specify manufacturer, model/series and voltage	D
emergency - specify model/series or lumens	¹ E
external fusing	F
multi-circuit	² M
new york city code	N
occupancy sensor	³ O
photocell/daylight sensor	⁴ P

suspended

Multi-circuit standards

