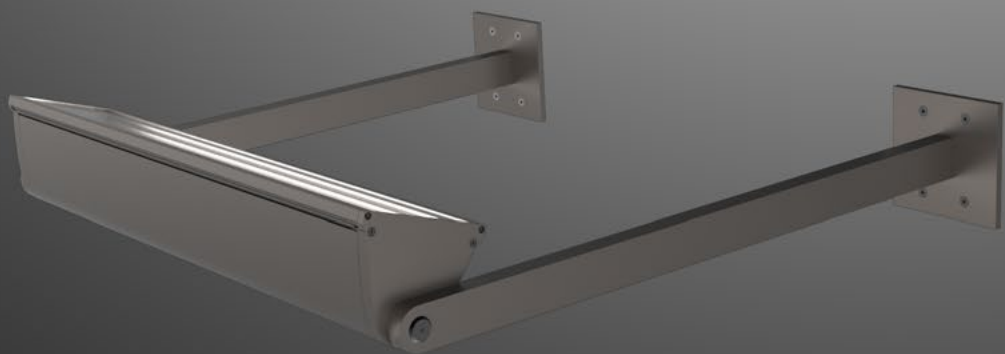


a·light
elements

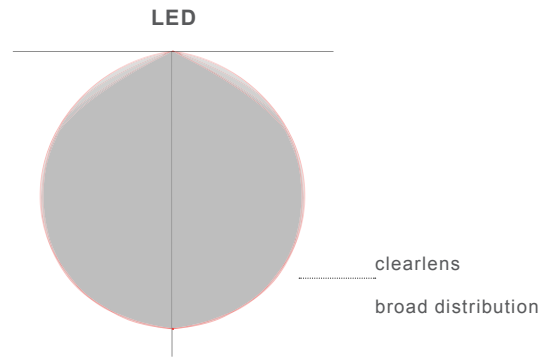
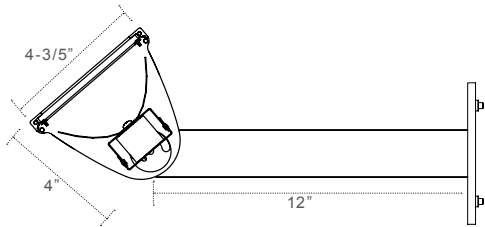


N1
site

indirect adjustable symmetric



wall · ceiling · ground
IP66



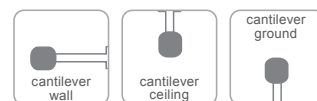
LED per foot	1 board in cross	
	watts/ft	lumens/ft
LS	5	600
LH	10	1200

Lumens at board at 4000k.
Consult IES files online for delivered lumens.
Specifications subject to change.

Available Light Platforms:



Available Mounting:



Mounting:

Cantilevered Ceiling or Wall Mount: 12" cantilevered arms allow integral powerfeed through arm and gasketed single gang plate (provided) into J-Box (up to 4/O by others). Fixture housing is adjustable up to 180°.

Cantilevered Ground Mount: 6" cantilevered arms allow integral powerfeed through arm and gasketed stainless steel square base plate (provided) into concrete (by others). Fixture housing is adjustable up to 180°.

Lengths:

All length dimensions are nominal and used for general length identification purposes. Actual lengths may vary. Luminaires are individual fixtures and are not connectable.

LED:

5yr warranty. >60,000hr LED life. Tested to LM-79 and LM-80. See wattage/lumen table for specifications per foot. All specifications are subject to change.

T5/T5HO:

Single lamp in cross section. Program start is factory standard.

T8:

Single lamp in cross section. Instant start is factory standard: choose low <0.8BF; standard 0.8-1.0BF; high >1.0BF. Specify if program start or custom ballast factor is required.

Construction:

60% recycled aluminum extruded housing. Precision milled endcaps. Cantilevered arms of rectangular aluminum tubing.

Finish:

Electrostatically applied powder coat finish housing with clear anodized aluminum door frame. Housing cannot be anodized.

Listing:

UL/CUL. Sealed and gasketed for Wet Location. IP66.

Companion Luminaires:

J1 asymmetric interior

Legend:

1. Broad distribution is applicable to LED or flouescent.
2. Narrow distribution is only applicable to LED.
3. Use joiner arms for runs (ie: 8' = 2 cantilever arms + 1 joiner arm)

Series: N1

Dimension:

nominal 4' | 4

Lamping:

LED standard output | **LS**
 LED high output | **LH**
 T5 (1) | **S**
 T5HO (1) | **H**
 T8 (1) low output | **T8L**
 T8 (1) standard output | **T8S**
 T8 (1) high output | **T8H**

LED Temp (if applicable):

3000k | **30**
 3500k | **35**
 4000k | **40**

Voltage:

universal 120V - 277V | **U**
 120V | **1**
 277V | **2**
 347V | **3**

Optics:

clear tempered glass | **G**
 polycarbonate | **P**

Distribution:

broad (LED or flouescent) ¹ | **B**
 narrow (LED only) ² | **N**

Mounting:

12" cantilever arms | **A12**
 24" cantilever arms | **A24**
 ground mount: 6" cantilever arms | **S6**
 joiner arm 6" ³ | **J6**
 joiner arm 12" ³ | **J12**
 joiner arm 24" ³ | **J24**

Finish:

a-lightanium™ | **T**
 satin white | **W**
 satin black | **B**
 textured eggshell white | **E**
 other - specify RAL# | **O**

Options:

dimming - specify manufacturer, model/series and voltage | **D**
 emergency | **E**
 external fusing | **F**
 multi-circuit | **M**
 new york city code | **N**

site