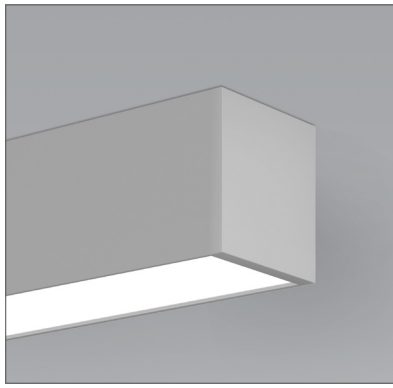
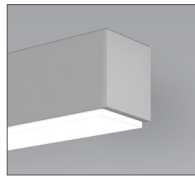


Beam 4

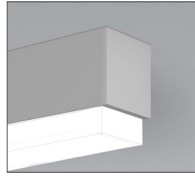
Surface mount



Flush Spotless lens - down



Glo Lens - down



StepLens 1.5 - down

Project _____

Type _____

Notes _____

PERFORMANCE PER LINEAR FOOT AT 3500K

NOMINAL LUMEN OUTPUT	INPUT WATTS*	EFFICACY	SHIELDING
1000 lm/ft	8.2 W/ft	114 lm/W	SO

Please consult factory for custom lumen output and wattage.

SO
Spotless Lens
Asy. Spotless Lens

Glo lens
0.25"

StepLens
1.5"



Ordering Guide

TB4SLED		NOM. LUM/FT DOWN		CRI		COLOR TEMP.		SHIELDING	
PRODUCT ID									
TB4SLED	BEAM 4 - Surface LED	400	400 lm/ft - Minimum	80	80 CRI	27	2700 K	SO	spotless lens
		1000	1000 lm/ft - Maximum	90	90 CRI	30	3000 K	ASO	asymmetric with spotless lens
						35	3500 K	0.25G	0.25" Glo lens
						40	4000 K	1.5M	StepLens , lum. end cap
Outputs between listed min and max are available. Consult factory for outputs outside of the listed range.						Consult Axitune spec sheet for Axis color technology options		Choose only one of the options above; SurroundLite not available with direct	

LENGTH (FT)	MR (OPTIONAL)	FINISH	VOLTAGE	DRIVER	CIRCUITS
2 2'	DMLD(#) downlight module LED	AP aluminum paint	120 120 V	DP dimming (0-10V) 1%	1 1 circuit
3 3'		W white	277 277 V	LT Lutron ⁽¹⁾	2 2 circuits
4 4'		BLK black	347 347 V	BI bi-level dimming	+E(#) emergency circuit ⁽³⁾
5 5'		C custom	UNV universal	O other ⁽²⁾	+NL(#) night light circuit ⁽³⁾
8 8'					+GTD(#) generator transfer device ⁽³⁾
12 12'					+M MR
S# System Run					
Add 6" per lamp, Specify quantity Separate circuits included Requires 120V or 277V				(1) Specify system (2) Please consult factory; see page 2 Consult Axitune spec sheet for Axis color driver options	(3) Specify quantity

MOUNTING/SUSPENSION	BATTERY (OPTIONAL)	OTHER (OPTIONAL)	IC CONTROLS (OPTIONAL)	CUSTOM (OPTIONAL)
SB9 surface TB/TG 9/16 SB15 surface TB/TG 15/16 SBS surface screw slot t-bar S surface drywall ceiling SC surface solid ceiling	B# battery pack (integral)	F fuse ⁽⁴⁾	DS# daylight sensor OS# occupancy sensor DOS# daylight & occupancy sensor EN# Enlighted integral ⁽⁵⁾ ENR# Enlighted remote ⁽⁵⁾ WC# wireless control dimming	C custom
	Minimum 5ft; Not available with 347V Please consult factory	(4) Requires 120V or 277V	(5) Please consult factory Specify quantity. Requires 8" blank. See integrated controls guide for more details.	Please specify

● CONSTRUCTION

Housing	Extruded aluminum (0.075" nominal) Up to 70% recycled content
End Cap	Cast aluminum
Interior Brackets	Die formed sheet steel (20 gauge)
Reflectors	White powder coated sheet steel (22 gauge)
Lenses	Extruded acrylic (0.070" nominal)
Hanger	Die cast aluminum

● ELECTRICAL

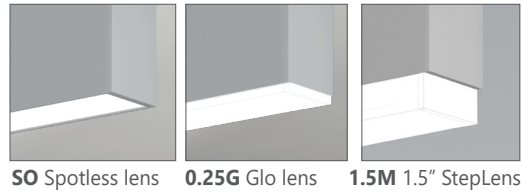
Lutron driver*	LDE1 - EcoSystem H-Series (1%) LDE5 - EcoSystem 5-Series (5%) LTE - Hi-Lume® A-series 2Wires Forward Phase (1%) *Consult factory
Other drivers	DALI - Digital Addressable Lighting Interface DMX - Digital Multiplex LV - line voltage - Advance Mark 10 Xitanium SR - For wireless sensor POE (Power over Ethernet) - Low Voltage Lighting System.
Emergency	Integral emergency battery pack or emergency circuit optional.
Input Voltage	120V, 277V, 347V, UNV.

i Incorporating these components may have limitations or affect the length of the luminaire. Please contact factory for more details.

● LED SYSTEM

CRI	Minimum 80 or 90 color rendering index.
CCT	Choice of 2700K, 3000K, 3500K and 4000K color temperature with a great color consistency (within 3-step MacAdam ellipse). Both within fixture and fixture to fixture.
LED life	Minimum 50,000h with 85% of lumen maintenance in 25°C ambient temperature, in compliance with IES LM-80 testing measurements.
Thermal Management	Aluminum housing acting as the heat sink to maximize life.
Environment	Dry and damp rated in operating ambient temperatures of 0-40°C (32-104F).

● OPTICS



SPOTLESS LENS

Frosted acrylic snap-in micro lens

GLO LENS

0.25" frosted acrylic drop lens. Patented design.

STEPLENS

1.5" StepLens, illuminated end cap.

● SYSTEM (S#)

BEAM 4 SurroundLite linear systems, with the use of a strong profile, allow for a nearly hair thin connection system of continuous runs. Lengths of 4', 8', 12' as well as custom lengths are available. Runs of BEAM 4 SurroundLite that are greater than 12' in length are designated as systems (S#). This means that the run is comprised of a combination of 4', 8' and/or 12' sections to be assembled on site using our joining system. System runs with SurroundLite available in 1' increments only. For more information on systems and joining, please refer to the BEAM installation sheets available for download at www.axislighting.com.

● WARRANTY

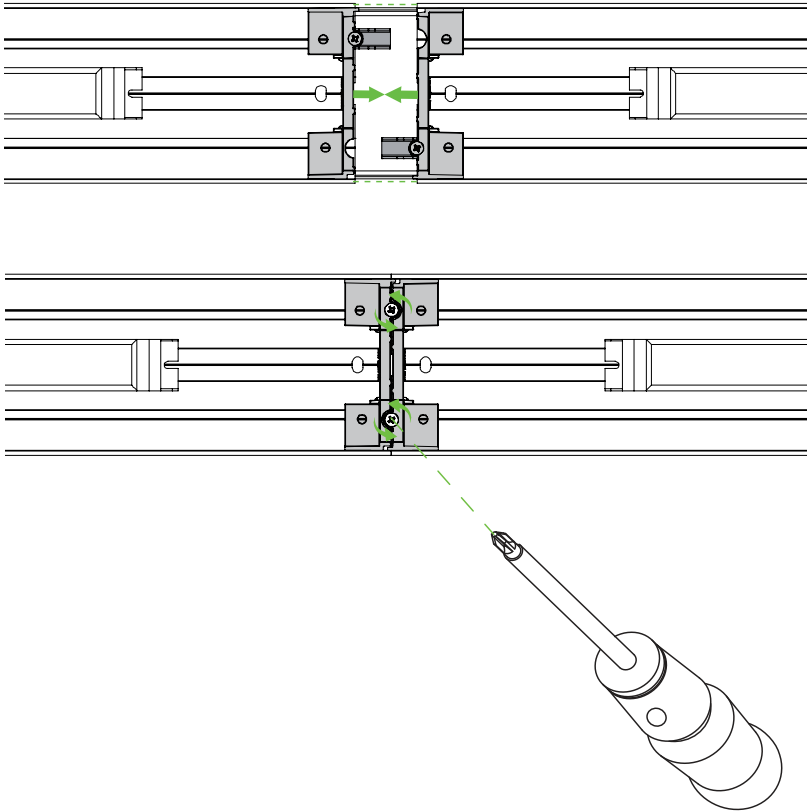
Axis Lighting will warrant defective LEDs, boards, and drivers for 5 years from date of purchase. Warranty is valid if luminaire is installed and used according to specifications. If defective, Axis will send replacement boards or drivers at no cost along with detailed replacement instructions and instructions on how to return defective components to Axis.

● JOINERS

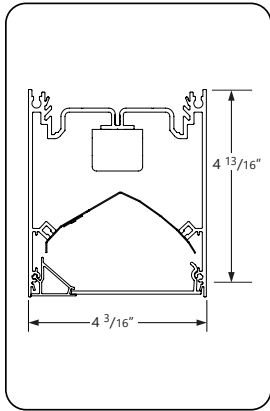
BEAM 4 luminaires feature the joining mechanism shown below. This mechanism joins and aligns multiple luminaires to create long continuous runs of light.

NOTE: Mount each system segment individually.

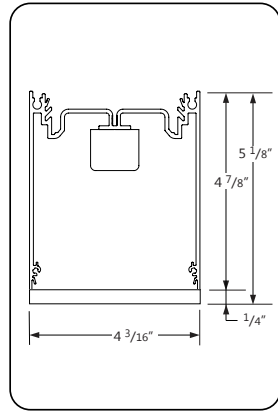
Do not assemble system prior to mounting



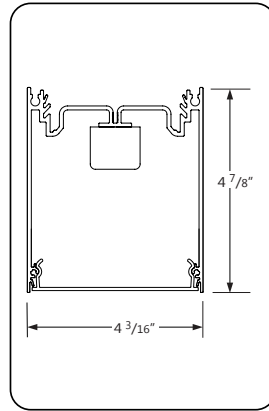
SECTION VIEWS



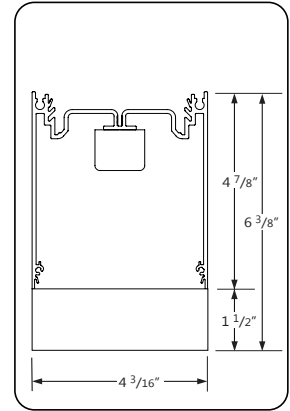
ASO Asymmetric SO lens - Direct



0.25G 0.25" Glo lens - Direct

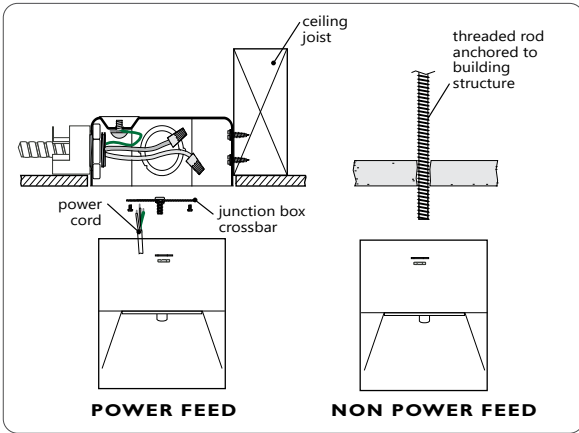


SO Spotless lens - Direct

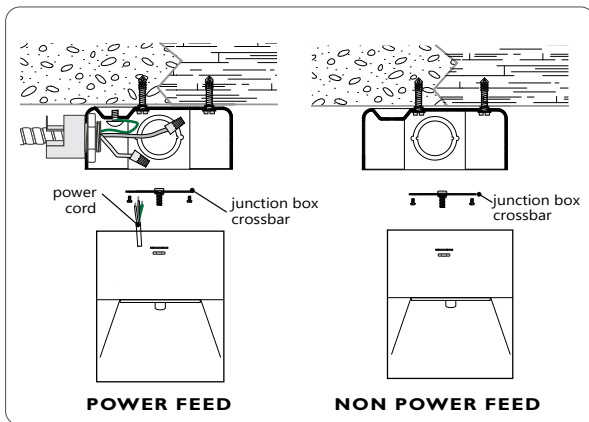


1.5M 1.5" StepLens - Direct

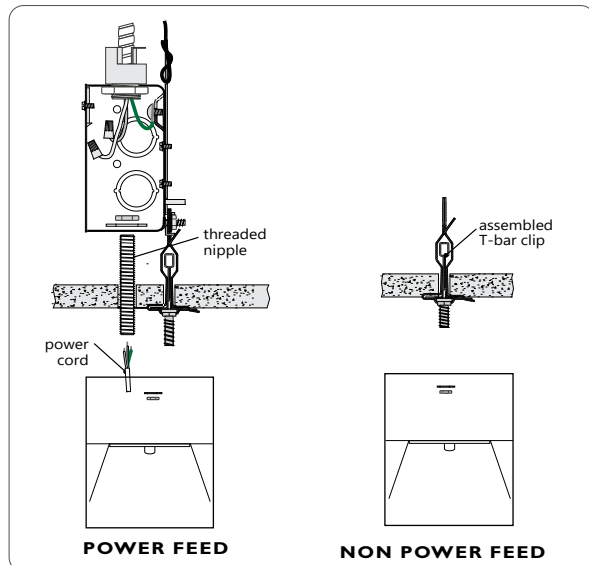
● MOUNTING DETAILS



S SURFACE MOUNT DRYWALL CEILING



SC SURFACE MOUNT SOLID CEILING



SB9 SB15 SBS SURFACE MOUNT T-BAR CEILING

● OTHER MOUNTING OPTIONS

BEAM 4 is also available with wall and pendant mounted options.

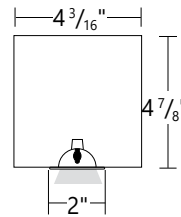
i Specification sheets and installation sheets for all mountings for BEAM 4 luminaires are available for download at www.axislighting.com

● DOWNLIGHT MODLE LED

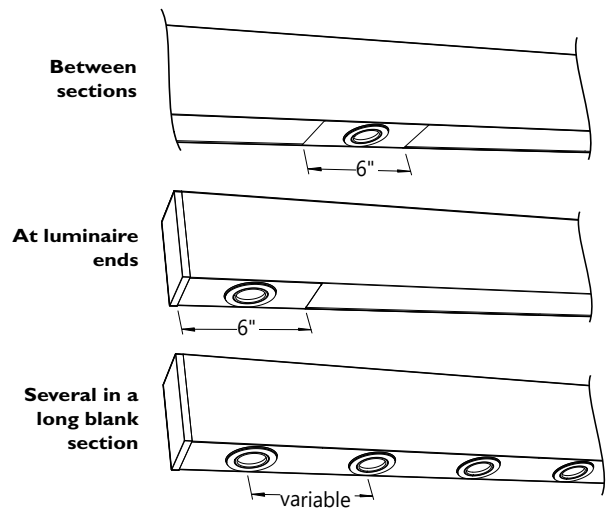
Blank DMLED Quantity

Extruded aluminum (0.075" nominal) 1.4" diameter
For every 4' section, there may be up to a maximum of 4 x DMLED lamps.
Each DMLED lamp is placed centered on a blank section 6" in length.

Spacing



For a series of MR11's within a given section length, they will be spaced evenly on a longer blank section.
The directed light of DMLED lamps are fixed downward.
Custom spacing may be available on special request.




Beam Angle	45 nominal degrees
Input Watts	3W
Nominal Lumens	50 lumens
Efficacy	17 lumens per watt
Color Rendering Index (CRI)	80
Life	25,000 hours at L ₇₀
Correlated color temperature (CCT)	2700K

i More options are available upon request. Please consult factory.

● FINISH

Aluminium paint, powder coated and custom finishes are also available.

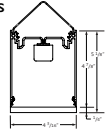
● APPROVALS

Certified to UL and CSA standards 
Meets NYC requirements
Meets ADA requirements.
Suitable for damp locations.

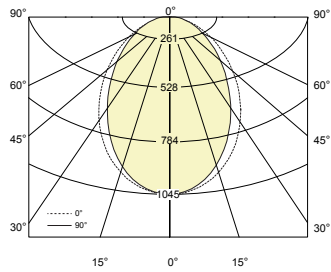
● PHOTOMETRIC DATA

0.25G 0.25" Glo lens

Uplight
0 lm/ft
Downlight
1000 lm/ft



PHOTOMETRIC CURVE



Lumen/ft up: 0 lm/ft
Lumen/ft down: 925 lm/ft
Total Lumens: 3706 lm (for 4ft)
Input Watts: 32.6 W
Efficacy: 114 lm/W

IES FILE: TB4DILED-0-1000-80-35-.25G-L-4.IES

TESTED ACCORDING TO IES LM-79-2008

CANDELA DISTRIBUTION

Vertical Angle	Horizontal Angles				
	0	22.5	45	67.5	90
0	1611	1611	1611	1611	1611
5	1601	1599	1597	1597	1596
15	1515	1508	1495	1483	1476
25	1352	1338	1308	1281	1267
35	1129	1112	1072	1034	1017
45	878	862	823	785	768
55	631	620	590	561	549
65	404	400	386	370	363
75	209	214	215	213	211
85	60	70	82	90	92
90	7	18	32	43	46

ZONAL LUMENS

Zone	Lumens
0	
0-10	151
10-20	421
20-30	602
30-40	670
40-50	636
50-60	529
60-70	382
70-80	227
80-90	89
90	

LUMINANCE DATA (cd/m²)

Vertical Angle	Horizontal Angles		
	0	45	90
45	86007	62398	58861
55	75524	48395	44455
65	67524	35623	30983
75	63677	23518	18155
85	78808	11477	6242

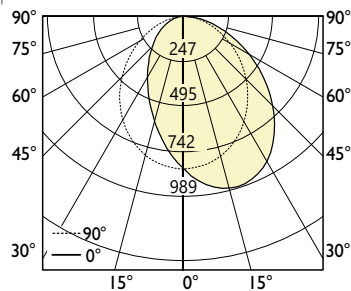
● PHOTOMETRIC DATA - ASYMMETRIC DIRECT

ASO Asy. Spotless Lens - Down

Downlight
500 lm/ft



PHOTOMETRIC CURVE



Lumen/ft down: 524 lm/ft
Total Lumens: 2096 lm/4ft)
Input Watts: 22.03 W
Efficacy: 95 lm/W

IES FILE: TB4LED-500-80-30-ASO-4 .IES

TESTED ACCORDING TO IES LM-79-2008

CANDELA DISTRIBUTION

Vertical Angle	Horizontal Angles				
	0	22.5	45	67.5	90
0	846	846	846	846	846
5	915	911	897	867	839
15	986	972	932	872	798
25	965	949	901	821	719
35	860	846	801	719	611
45	694	686	653	581	484
55	508	502	479	428	353
65	324	321	308	277	228
75	164	164	159	144	120
85	36	37	39	38	34
90					

ZONAL LUMENS

Zone	Lumens
0	
0-10	80
10-20	225
20-30	331
30-40	381
40-50	372
50-60	315
60-70	227
70-80	128
80-90	37
90	0

LUMINANCE DATA (cd/m²)

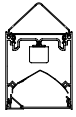
Vertical Angle	Horizontal Angles		
	0	45	90
45	10871	10226	7583
55	9798	9254	6821
65	8480	8078	5982
75	7030	6809	5125
85	4622	4976	4276

i All IES files are available for download at: www.axislighting.com

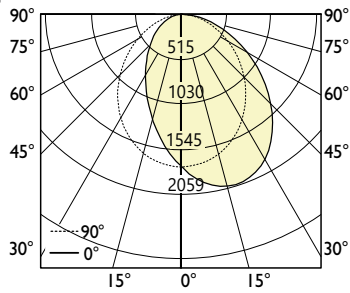
● PHOTOMETRIC DATA - ASYMMETRIC DIRECT

ASO Asy. Spotless Lens - Down

Downlight
1000 lm/ft



PHOTOMETRIC CURVE



CANDELA DISTRIBUTION

Vertical Angle	Horizontal Angles				
	0	22.5	45	67.5	90
0	1901	1901	1901	1901	1901
5	1890	1844	1808	1782	1775
15	1789	1666	1560	1487	1463
25	1600	1428	1280	1181	1148
35	1346	1165	1010	910	877
45	1059	900	768	683	657
55	769	650	553	492	474
65	498	421	361	324	314
75	257	220	194	178	174
85	73	62	56	53	53
90	3	2	2	2	2

ZONAL LUMENS

Zone	Lumens
0	
0-10	179
10-20	499
20-30	722
30-40	816
40-50	783
50-60	653
60-70	463
70-80	254
80-90	72
90	0

LUMINANCE DATA (cd/m²)

Vertical Angle	Horizontal Angles		
	0	45	90
45	16354	11862	10150
55	14654	10532	9020
65	12876	9334	8114
75	10856	8180	7360
85	9124	7008	6627

Lumen/ft down: 1110 lm/ft

Total Lumens: 4441 lm/4ft)

Input Watts: 44.28 W

Efficacy: 100 lm/W

IES FILE: TB4LED-1000-80-30-ASO-4 .IES

TESTED ACCORDING TO IES LM-79-2008

i All IES files are available for download at: www.axislighting.com