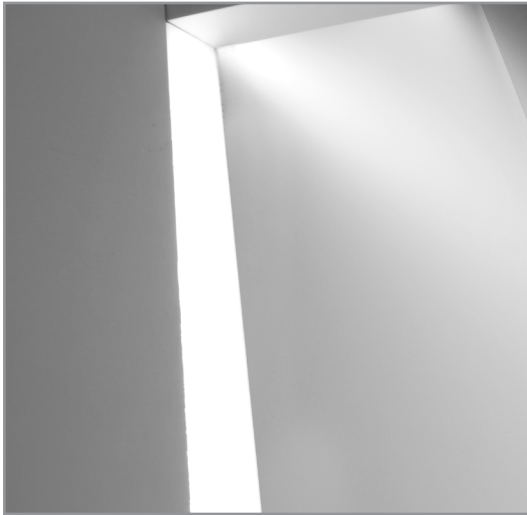


BFZ100-R | FRACTALZ GENERAL INFORMATION

Fractalz – 2-1/4" wide recessed flush mount LED luminaire



Project: _____ Type: _____



FEATURES

The BFZ100-R is part of the dynamic Fractalz series linear LED luminaires. This flush mount design not only creates clean, linear runs of light but also serves as a mounting point for Fractalz Through-Space or Suspended luminaires to project luminous lines into interior volumes.

SPECIFICATIONS

Fixture constructed of an extruded aluminum housing, sheet formed plaster flanges and frosted acrylic lens

Fixture flush mounts in walls or hard ceilings and integrates with the Fractalz series Through-Space luminaires

Available in nominal lengths of 24"-96" at 6" intervals

Removable end plaster flanges convert single fixtures for use in continuous runs

Fixtures provided with 18 ga. wiring harness for 6 Amp maximum load

Standard integral 120-277V constant voltage driver offered with 0-10V dimming or non-dim

Standard outputs are 665 or 1000 lumens per foot

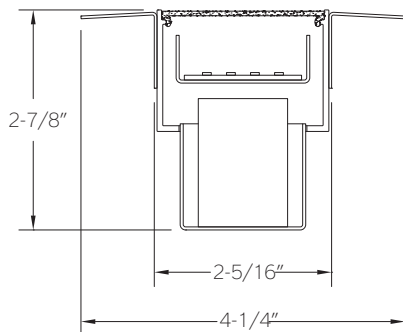
LEDs available in 2700K, 3000K, 3500K, and 4000K, within a 3 step MacAdam ellipse, all with 90+ CRI typical

Life: 50,000 hours L₇₀

Limited five year warranty

UL and C-UL listed for dry and damp locations

SECTION



PERFORMANCE

NOMINAL LENGTH	OUTPUT	LUMENS/ft.	WATTS/ft.	LUMINAIRE LUMENS	EFFICACY (LPW)
4'	R: regular	665	7.4	2653	90
	H: high	1000	11.1	3990	90

*Note: All data reflects fixtures with 3500K LEDs

GET A QUOTE >



BFZ100-R -

<p>NOMINAL LENGTH*</p> <p>24: 24"</p> <p>30: 30"</p> <p>36: 36"</p> <p>42: 42"</p> <p>48: 48"</p> <p>54: 54"</p> <p>60: 60"</p> <p>66: 66"</p> <p>72: 72"</p> <p>78: 78"</p> <p>84: 84"</p> <p>90: 90"</p> <p>96: 96"</p>	<p>INTERFACE CONFIGURATION A</p> <p>DE: dead end</p> <p>45: 45° interface</p>	<p>INTERFACE CONFIGURATION B</p> <p>DE: dead end</p> <p>45: 45° interface</p>	<p>CORRELATED COLOR TEMPERATURE</p> <p>27: 2700K-90+ CRI</p> <p>30: 3000K-90+ CRI</p> <p>35: 3500K-90+ CRI</p> <p>40: 4000K-90+ CRI</p>	<p>DRIVER</p> <p>N: non-dimming</p> <p>D: dimming, 0-10V, 10%</p>	<p>OUTPUT (lumens per foot)</p> <p>R: regular - 665</p> <p>H: high - 1000</p>
---	---	---	---	---	---

* Actual length dependent on interface A and B configuration.

INTERFACE CONFIGURATIONS Note:

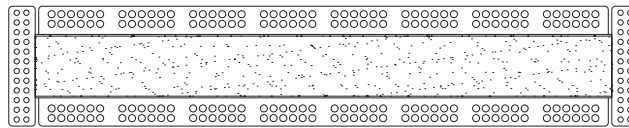
Interface Key

DE: Dead End –The end of a single fixture, beginning or end of a continuous run or joint between fixtures

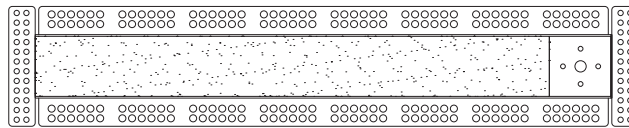
45: 45° Interface – End serves as the mounting point to a Fractalz series Through-Space fixture with mating 45° Inward or 45° Outward interface and also for the Fractalz Suspended fixture

Interface A

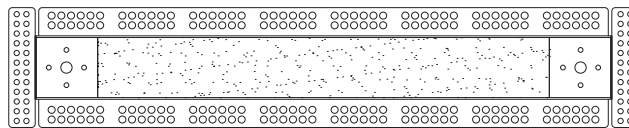
Dead End



Dead End



45° Interface



Interface B

Dead End

45° Interface

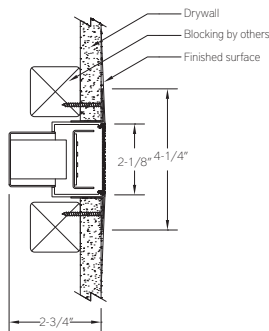
45° Interface

MOUNTING

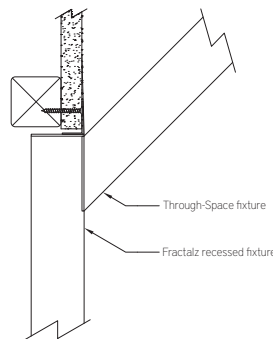
Note: BFZ100-R recessed fixtures must be securely mounted to wall or ceiling framing to support cantilevered Through-Space and Suspended fixtures

- Installs after 1/2" or 5/8" drywall
- Housing secured with drywall screws into adequate blocking
- Finished with joint compound over plaster frame

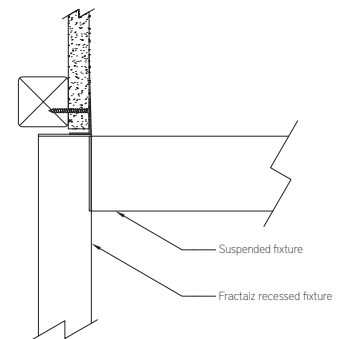
Mounting to Wall Framing



Mounting with BFZ100-T Through-Space fixture



Mounting with BFZ100-S Suspended fixture



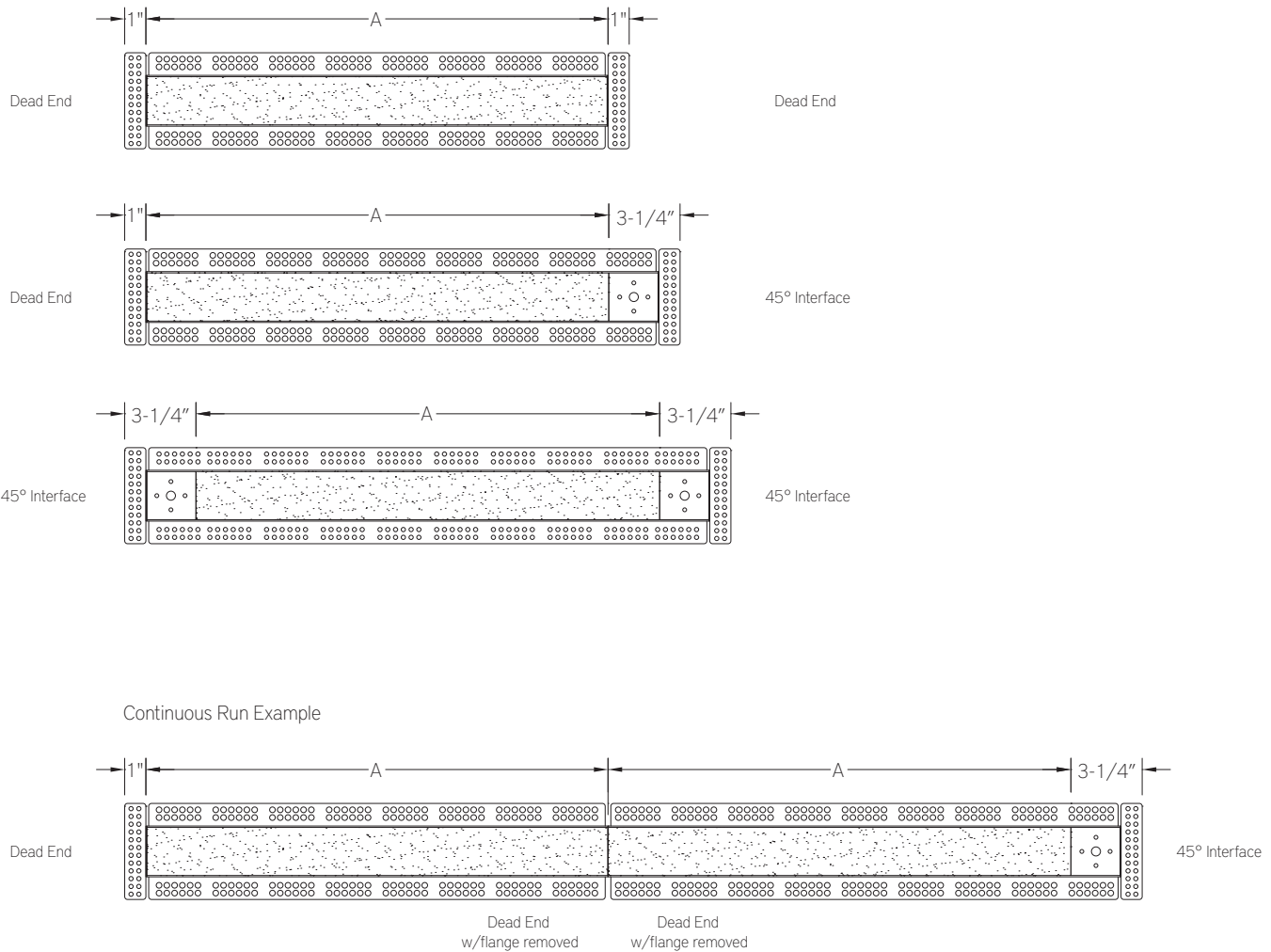
BFZ100-R | FRACTALZ

Fractalz – 2-1/4" wide recessed flush mount LED luminaire

LENGTH DIMENSIONS

FIXTURE ORDERING CODE	LENGTH A
24	24"
30	30"
36	36"
42	42"
48	48"
54	54"
60	60"

FIXTURE ORDERING CODE	LENGTH A
66	66"
72	72"
78	78"
84	84"
90	90"
96	96"



Note: Runs are created in the field by removing the plaster flanges where fixtures join.