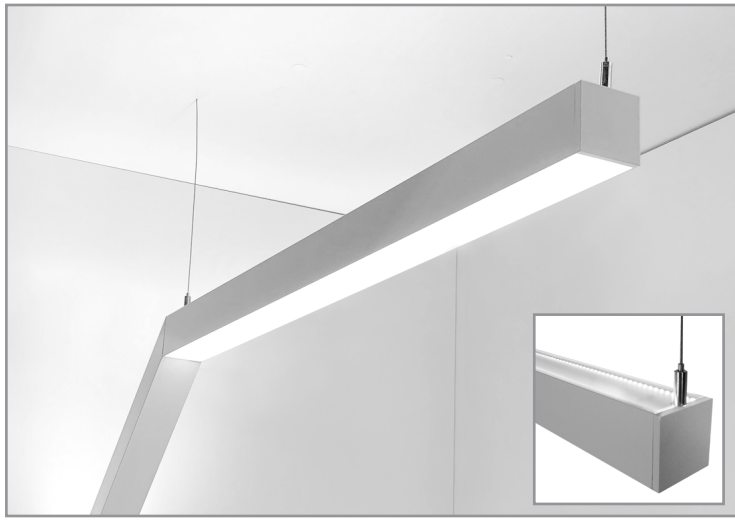


BFZ100-S | FRACTALZ™ GENERAL INFORMATION



Fractalz – 2-1/4" square suspended LED luminaire

Project: _____ Type: _____



FEATURES

The BFZ100-S is part of the dynamic Fractalz series linear LED luminaires. The 2-1/4" square profile light fixture creates clean runs of direct, indirect or bi-directional illumination. Additionally, the BFZ100-S model interfaces with Fractalz Recessed and Through-Space fixtures to form exciting, multi-directional lighting arrays.

SPECIFICATIONS

Fixture constructed of an extruded aluminum housing, flat acrylic lens and machined aluminum end caps

Available for direct, indirect or bi-directional configurations with Lambertian or batwing indirect optic options

Fixture ends can mount to Fractalz Through-space or Fractalz Recessed fixtures or accessory flush mount wall plates

Available in nominal lengths of 2'-8' single fixtures and continuous runs

Depending on light source orientation, included standard driver is 120-277V remote or integral and offered with 0-10V dimming or non-dim

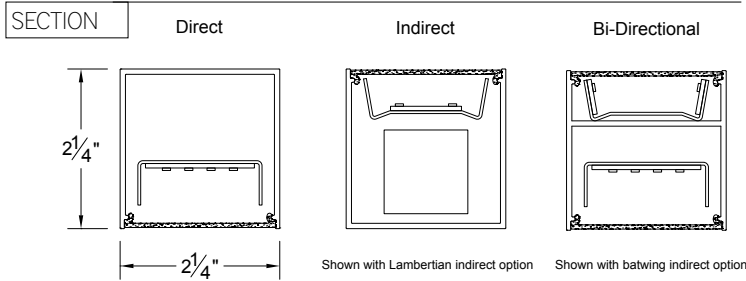
Standard light outputs range from 665 - 1000 lumens per foot for the direct source and 700 - 1415 lumens per foot for the indirect source

LEDs available in 2700K, 3000K, 3500K, and 4000K, within a 3 step MacAdam ellipse, all with 90+ CRI typical

Life: 50,000 hours L₇₀

Limited five year warranty

UL and C-UL listed for dry and damp locations



PERFORMANCE

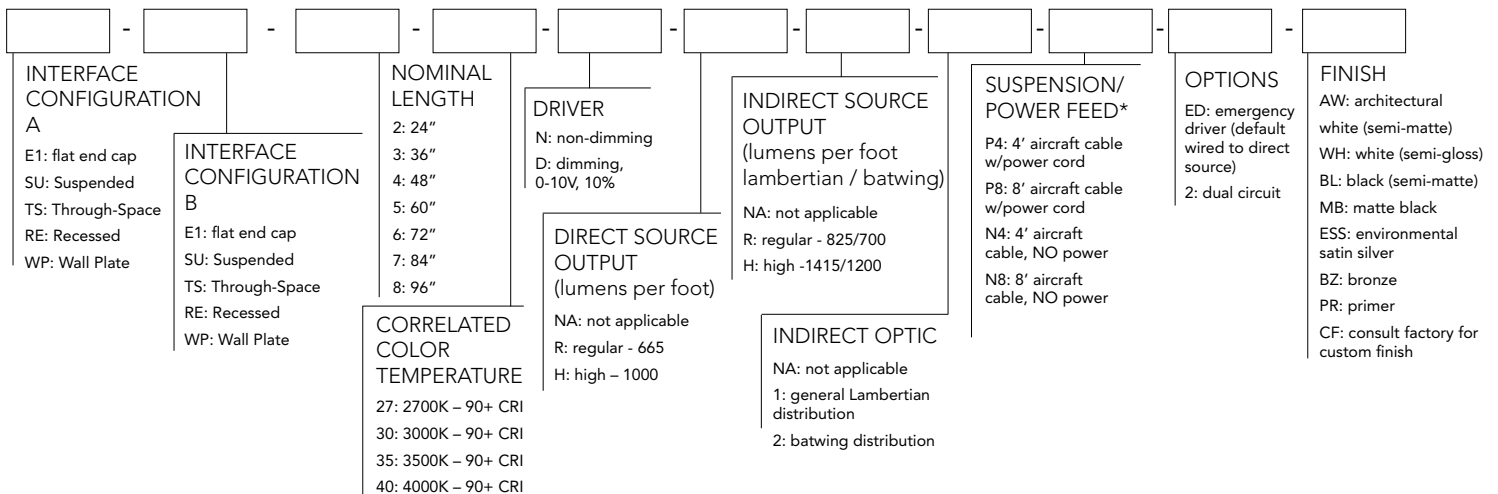
NOMINAL LENGTH	OPTIC CONFIGURATION	OUTPUT	LUMENS/ft.	WATTS/ft.	LUMINAIRE LUMENS	EFFICACY (LPW)
4'	DIRECT	R: regular	665	7.4	2653	90
		H: high	1000	11.1	3990	90
	INDIRECT-LAMBERTIAN	R: regular	825	7.8	3306	106
		H: high	1415	13.4	5666	106
	INDIRECT-BATWING	R: regular	700	8.3	2804	84
		H: high	1200	14.2	4800	84

[GET A QUOTE >](#)



*Note: All data reflects fixtures with 3500K LEDs

BFZ100-S -



* Power Feed requirement dependent on fixture length, direct and/or indirect source and light output options. Factory to confirm power feeds per customer supplied layout.

INTERFACE CONFIGURATION A

Note: Fractalz suspended fixture ends can join to Fractalz suspended, Fractalz Through-Space and Fractalz recessed luminaires, as well as wall mount plates or terminating with an end cap

ORDER CODE	DESCRIPTION
E1	Interface A terminates with a Flat End Cap
SU	Interface A joins to another Suspended Fractalz luminaire
TS	Interface A joins to a Fractalz Through-Space luminaire
RE	Interface A joins to a Fractalz Recessed luminaire
WP	Interface A joins to a Wall Plate

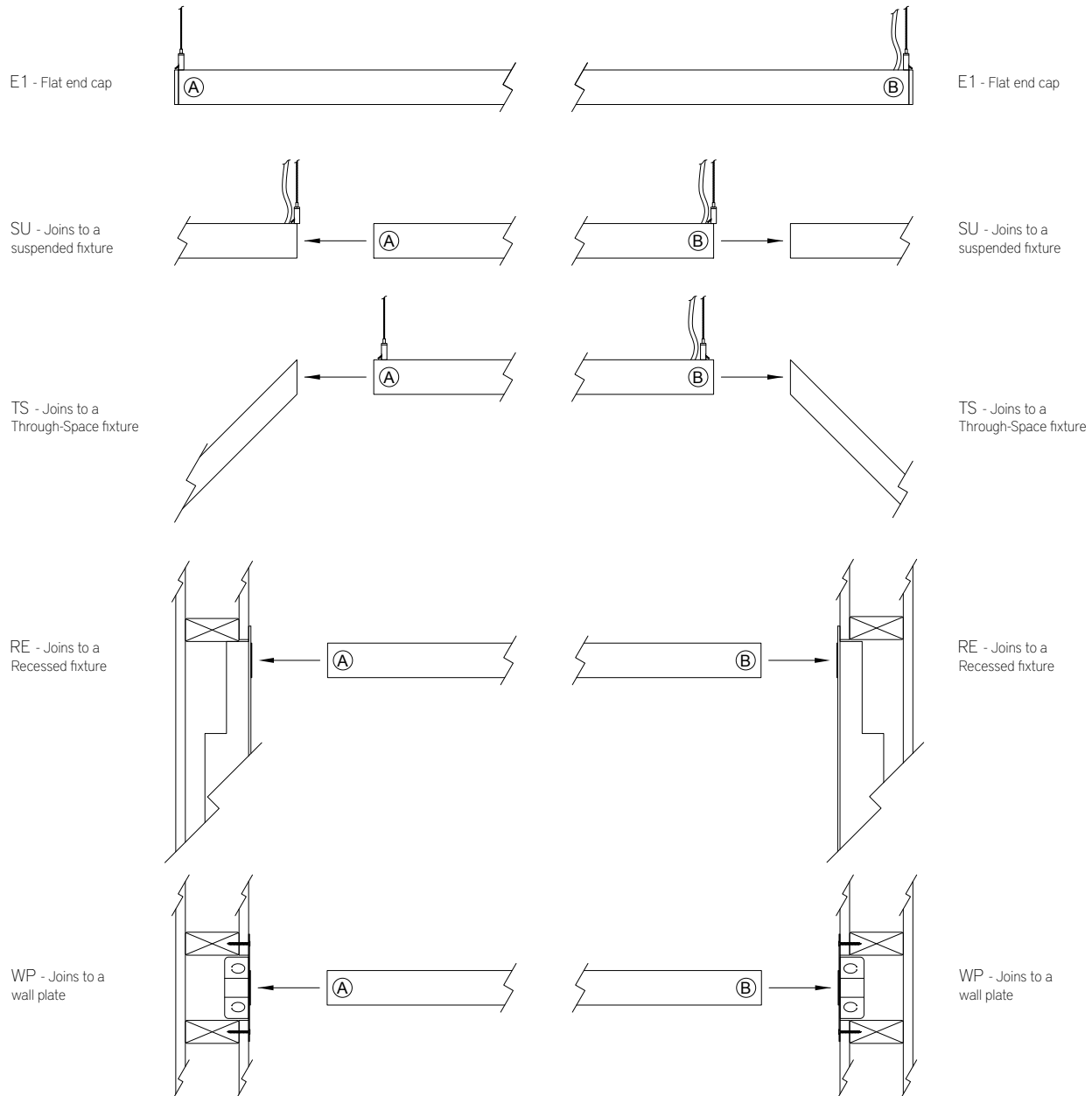
INTERFACE CONFIGURATION B

Note: Fractalz suspended fixture ends can join to Fractalz suspended, Fractalz Through-Space and Fractalz recessed luminaires, as well as wall mount plates or terminating with an end cap.

ORDER CODE	DESCRIPTION
E1	Interface B terminates with a Flat End Cap
SU	Interface B joins to another Suspended Fractalz luminaire
TS	Interface B joins to a Fractalz Through-Space luminaire
RE	Interface B joins to a Fractalz Recessed luminaire
WP	Interface B joins to a Wall Plate

INTERFACE A

INTERFACE B

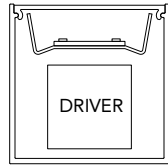


BFZ100-S | FRACTALZ™ GENERAL INFORMATION

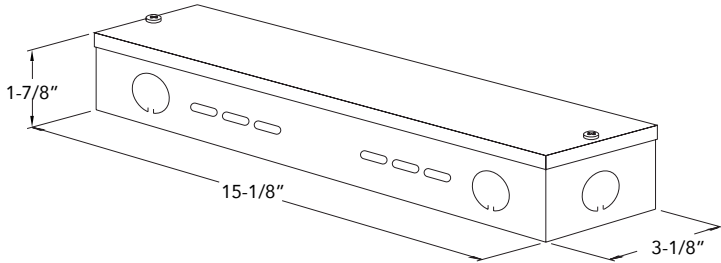


Fractalz – 2-1/4" wide recessed flush mount LED luminaire

DRIVER

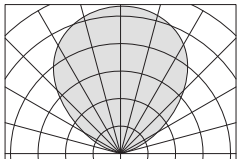
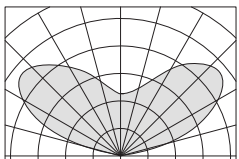


Fractalz Suspended fixtures with an **indirect light source only** are provided with the driver integral.



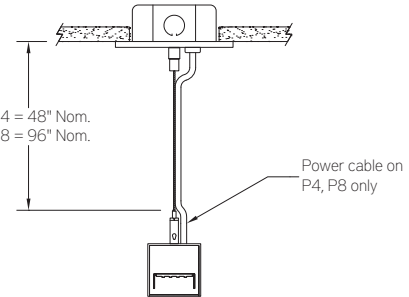
Fractalz Suspended fixtures with a **direct light source only or bi-directional** are provided with remote drivers and surface mount enclosure. Ventilated aluminum enclosure is 1-7/8" H x 15-1/8" L x 3-1/8" W. Each fixture will be provided with a driver matched for fixture length and output.

INDIRECT OPTIC


	ORDERING CODE	DESCRIPTION
	NA	NO indirect light source
	1	Lambertian indirect light distribution
	2	Batwing indirect light distribution

SUSPENSION / POWER FEED

Note: Power Feed requirement dependent on fixture length, direct and/or indirect source and light output options. FACTORY TO CONFIRM POWER FEEDS PER CUSTOMER SUPPLIED LAYOUT

	ORDERING CODE	DESCRIPTION
	P4 and P8	Power feed mounting option includes: <ul style="list-style-type: none"> • Ø 1/16" x 48" (P4) or 96" (P8) aircraft cables • 60" (P4) or 108" (P8) power cable (in coordinating finish) • Ø 5" white canopies, ceiling couplers, side exit grippers, mounting hardware
	N4 and N8	Non-power mounting option includes: <ul style="list-style-type: none"> • Ø 1/16" x 48" (N4) or 96" (N8) aircraft cables • Ø 5" white canopies, ceiling couplers, side exit grippers, mounting hardware

OPTIONS

ORDERING CODE	DESCRIPTION	SPECIFICATIONS
	ED EMERGENCY LED DRIVER	<ul style="list-style-type: none">• Universal 120-277V input voltage emergency driver delivers initial minimum power of 10W for 90 minutes• Available for REMOTE operation only. Driver wired to power direct light source.• Provided with combination test switch/indicator light mounted to wall plate for remote installation
2	DUAL CIRCUIT	<ul style="list-style-type: none">• Consult factory for wiring options