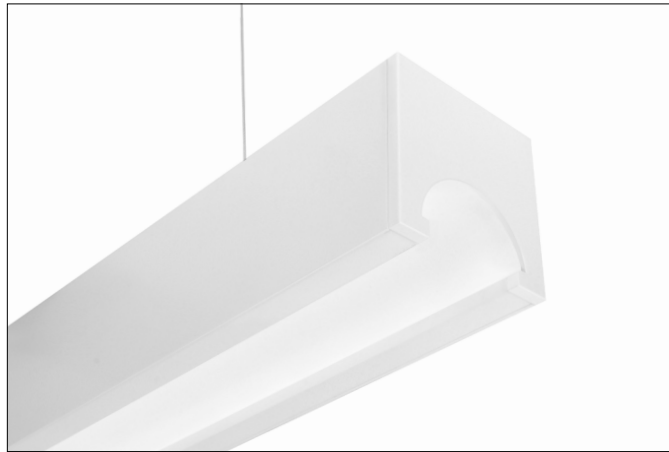


BHR300 | HORIZON

3-3/8" square illuminated coffer luminaire



Project: _____ Type: _____



FEATURES

The Horizon BHR300 linear illuminated coffer luminaire provides clean, understated yet high performance general illumination. Housed in a 3-3/8" square extrusion, a visibly quiet, 2" wide illuminated coffer distributes light efficiently across a broad range. Surface and cable mounting options are available, as well as a variety of dimming drivers and light outputs, to maximize the versatility of this clean design luminaire.

SPECIFICATIONS

Fixture constructed of an extruded aluminum housing, chassis, and machined aluminum end caps

Model variations offered for surface and cable suspended applications

Coffer formed of 98% reflective material

Standard finishes as shown below

Available in nominal lengths of 2'-7' single fixtures and continuous runs

Basic continuous run fixtures provided with 18 ga. wiring harness for 6 Amp maximum load (consult factory for runs requiring multiple circuits, sensor integration, etc.)

LED modules, driver, and reflector are integrated into the chassis, which snaps into the outer housing for simple and quick installation

Standard integral 120-277V driver offered with 0-10V dimming or non-dim (other dimming driver options available)

Integral 120-277V emergency battery backup available for 4' nominal non-dim or 0-10V (consult factory for all other lengths/drivers)

Standard light outputs are 665, 880 and 1090 lumens per foot

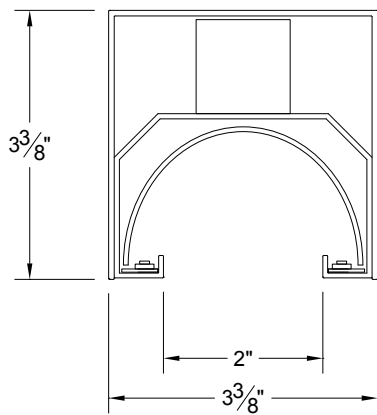
LEDs available in 2700K, 3000K, 3500K, and 4000K, within a 3 step MacAdam ellipse, all with 90+ CRI typical

Life: 50,000 hours L₇₀

Limited five year warranty

UL and C-UL listed for dry and damp locations

SECTIONS



PERFORMANCE

NOMINAL LENGTH	OUTPUT	LUMENS/ft.	WATTS/ft.	LUMINAIRE LUMENS	EFFICACY
4'	L: low	665	6.8	2450	97
	R: regular	880	9.0	3251	98
	H: high	1090	11.5	4008	95

Note: All data reflects fixtures with 3500K LEDs



GET A QUOTE >

BHR300 -

NOMINAL FIXTURE LENGTH*
 23: 22-11/16"
 36: 35-3/4"
 49: 49-1/4"
 62: 62-5/16"
 71: 71"
 84: 84-5/16"

CORRELATED COLOR TEMPERATURE
 27: 2700K-90+ CRI
 30: 3000K-90+ CRI
 35: 3500K-90+ CRI
 40: 4000K-90+ CRI

DRIVER
 ND: non-dimming
[Dimming]
 D: 0-10V, 1%
 HES: Lutron EcoSystem, soft-on fade-to-black, 1%
 H2: Lutron Hi-Lume 2-wire forward phase, 1%, (120V ONLY)
 E5: Lutron EcoSystem 5-Series, 5%
 EL: eldoLED ECOdrive 0-10V, 1%

LIGHT OUTPUT (lumens per foot)
 L: low - 665
 R: regular - 880
 H: high - 1090
 CF: consult factory for custom output

MOUNT
 SM: surface mount
 C4: cable mount 4' cable length
 C8: cable mount 8' cable length
 CF: consult factory for custom mounting

RUN CONFIGURATION
 SN: single
 ST: starter
 AD: adder
 TR: terminator

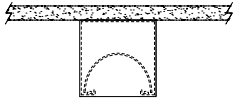
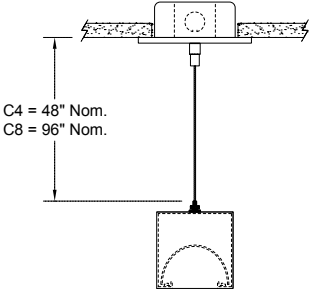
END TREATMENT (for SN, ST, TR)
 A: solid square end cap
 B: arched flat end cap

OPTIONS
 ED: emergency driver (49" non-dim or 0-10V fixtures only)
 WS1: Wattstopper FS-205 ‡
 ES1: EasySense SN102 ‡
 ES2: EasySense SN200 ‡
 ES3: EasySense SN300 ‡
 EN1: Enlighted FS-D22 ‡

FINISH
 AW: architectural white (semi-matte)
 WH: white (semi-gloss)
 BL: black (semi-matte)
 MB: matte black
 ESS: environmental satin silver
 BZ: bronze
 PR: primer
 CF: consult factory for custom finish
 SA: satin anodize (may require additional lead time)



* Actual dimension dependent on run configuration
 ‡ See sensor section for driver compatibility information

MOUNTING

	ORDERING CODE	DESCRIPTION
	SM	SURFACE MOUNT <ul style="list-style-type: none"> • Use appropriate fastener through Ø3/16" holes in housing
	C4 and C8	CABLE MOUNT Mounting option includes: <ul style="list-style-type: none"> • Ø 1/16" x 48" (C4) or 96" (C8) aircraft cables • 60" (C4) or 108" (C8) power cable (in coordinating finish) • Bracket bars • Ø 5" white canopies • Ceiling couplers • Cable grippers

END TREATMENT

Note: These options apply to SN, ST and TR configuration fixtures




	ORDERING CODE	DESCRIPTION	SPECIFICATION
	A	SOLID SQUARE CAP	1/4" thick, square machined aluminum end cap
	B	ARCHED OPENING CAP	1/4" thick machined aluminum end cap with arched opening

OPTIONS

ORDERING CODE	DESCRIPTION	SPECIFICATIONS
ED	EMERGENCY LED DRIVER	<ul style="list-style-type: none"> • Universal 120-277V input voltage emergency driver delivers initial minimum power of 10W for 90 minutes • Available for 4' nominal length non-dim or 0-10V fixture only (consult factory for all other lengths/drivers) • Indicator/test switch located on the top for C4/C8 mount and on the side at an end for SM mount

INTEGRATED SENSORS

Note: Sensor options add 3-1/2" to the overall fixture length.

ORDERING CODE	BRAND AND MODEL	FUNCTIONS	
	WS1 Wattstopper FS-205	Occupancy and light level sensor	For use with on/off or 0-10V dimming drivers only
	EN1 Enlighted FS-D22	Occupancy, ambient light sensing, daylight harvesting, and environment monitoring for Enlighted control network	Provided with Advance sensor ready series 0-10V dimming drivers
	ES1 Philips EasySense SN102	Occupancy, daylight harvesting and task tuning sensor with simple grouping	Provided with Advance sensor ready series 0-10V dimming drivers
	ES2 Philips EasySense SN200	Occupancy, daylight harvesting and task tuning sensor with advance grouping	
	ES3 Philips EasySense SN300	Occupancy, daylight harvesting sensor for integration with Zigbee control networks	