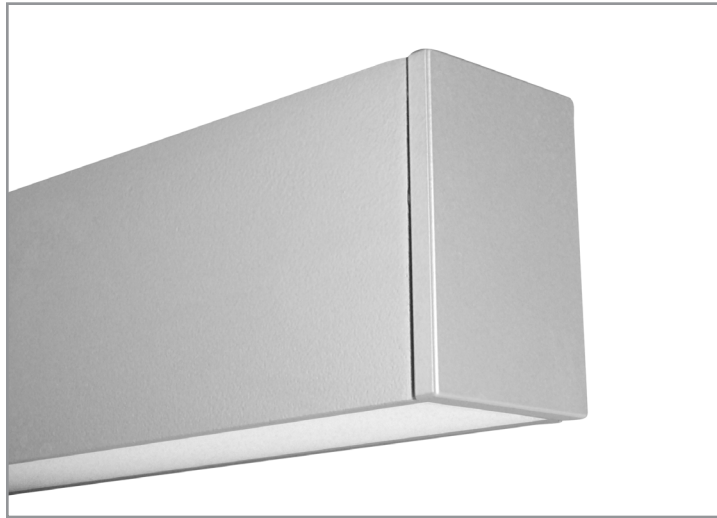


Project: _____ Type: _____



FEATURES

The BSS208 is a linear LED luminaire for general lighting applications. The 2" wide by 3" tall extrusion is fitted with a flush, frosted lens and machined aluminum end caps. Surface, cable or wall mounting options are available, as well as a variety of dimming drivers and light outputs, to maximize the versatility of this clean design luminaire.

SPECIFICATIONS

Fixture constructed of an extruded aluminum housing, extruded, frosted acrylic lens and machined aluminum end caps

Model variations offered for surface, wall mount and cable suspended applications

Standard finishes as shown below

Available in nominal lengths of 2'-8' single fixtures and continuous runs

Basic continuous run fixtures provided with 18 ga. wiring harness for 6 Amp maximum load (consult factory for runs requiring multiple circuits, sensor integration, etc.)

Standard integral 120-277V driver offered with 0-10V dimming or non-dim (other dimming driver options available)

Integral 120-277V emergency battery backup available for 4' nominal non-dim or 0-10V (consult factory for all other lengths/drivers)

Standard light outputs are 485, 625 and 825 lumens per foot

LEDs available in 2700K, 3000K, 3500K and 4000K, within a 3 step MacAdam ellipse, all with 90+ CRI typical

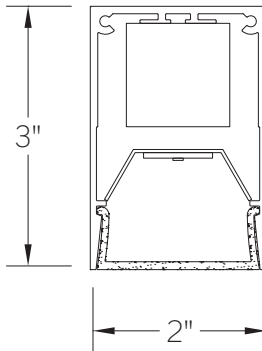
Passive infrared occupancy sensor and parabolic louver available

Life: 50,000 hours L₇₀

UL and C-UL listed for dry and damp locations

Limited five year warranty

SECTION



PERFORMANCE

NOMINAL LENGTH	OUTPUT	LUMENS/ft.	WATTS/ft.	LUMINAIRE LUMENS	EFFICACY (LPW)
4'	L: low	485	5.6	1795	86
	R: regular	625	7.8	2331	81
	H: high	825	10.8	3063	76

*Note: All data reflects fixture with 3500K LEDs


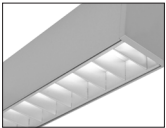


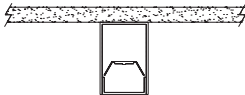
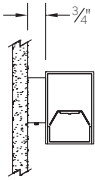
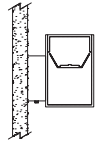
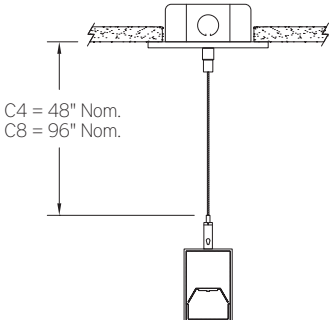
GET A QUOTE >

BSS208 -

NOMINAL FIXTURE LENGTH* 2: 22-5/8" 3: 33-5/8" 4: 44-5/8" 5: 55-5/8" 6: 66-5/8" 7: 77-5/8" 8: 88-5/8"	CORRELATED COLOR TEMPERATURE 27: 2700K-90+ CRI 30: 3000K-90+ CRI 35: 3500K-90+ CRI 40: 4000K-90+ CRI	DRIVER ND: non-dimming [Dimming] D: 0-10V, 1% HES: Lutron EcoSystem, soft-on/fade-to-black, 1% H2: Lutron Hi-lume 2-wire forward phase, 1%, (120V ONLY) E5: Lutron EcoSystem 5-Series, 5% EL: eldoLED ECOdrive 0-10V, 1%	LIGHT OUTPUT (lumens per foot) L: low – 485 R: regular – 625 H: high – 825 CF: consult factory for custom output	MOUNT SM: surface mount WD: wall mount - direct WI: wall mount - indirect C4: cable mount 4' cable length C8: cable mount 8' cable length	RUN CONFIGURATION SN: single ST: starter AD: adder TR: terminator	FINISH AW: architectural white (semi-matte) WH: white (semi-gloss) BL: black (semi-matte) MB: matte black ESS: environmental satin silver BZ: bronze PR: primer CF: consult factory for custom finish SA: satin anodize (may require additional lead time)
OPTIONS ED: emergency driver (4' non-dim or 0-10V only) S1: occ sensor pos.1 (see options section) L: louver (4' and 8' ONLY)						

* Actual dimension dependent on run configuration and sensor option

OPTIONS		ORDERING CODE	DESCRIPTION	SPECIFICATIONS
	ED	EMERGENCY LED DRIVER	<ul style="list-style-type: none"> Universal 120-277V input voltage emergency driver delivers initial minimum power of 10W for 90 minutes Available for 4' nominal length non-dim or 0-10V fixture only (consult factory for all other lengths/drivers) Note: remote battery backup available for shorter fixture lengths - ordered separately, consult factory for details Indicator/test switch located on the top for C4/C8 mount and on the side at an end for SM mount 	
		OCCUPANCY SENSOR	Passive infrared occupancy sensor with hold-off daylighting adjustment (10-120 foot candles) and time delay adjustment from 30 seconds to 30 minutes Light aperture length reduced by 4"	
	S1	OCCUPANCY SENSOR - POSITION 1	Sensor located on underside at an end	
	L	LOUVER	Parabolic louver with 5/8" blades at 1" spacing, formed from diffuse, high reflectance aluminum and supplied with light diffusion film	

MOUNTING		ORDERING CODE	DESCRIPTION
	SM	SURFACE MOUNT	Use appropriate fastener through Ø3/16" holes in housing
	WD	WALL MOUNT - DIRECT ORIENTATION	Mounting option includes: <ul style="list-style-type: none"> 1-7/8" H x 2-1/2" W aluminum bracket projects the fixture housing 3/4" from the wall surface
	WI	WALL MOUNT - INDIRECT ORIENTATION	Mounting option includes: <ul style="list-style-type: none"> 1-7/8" H x 2-1/2" W aluminum bracket projects the fixture housing 3/4" from the wall surface
	C4 and C8	CABLE MOUNT	Mounting option includes: <ul style="list-style-type: none"> Ø 1/16" x 48" (C4) or 96" (C8) aircraft cables 60" (C4) or 108" (C8) power cable (in coordinating finish) Bracket bars Ø 5" white canopies Ceiling couplers Side exit cable grippers

LENGTH/MOUNTING DIMENSIONS

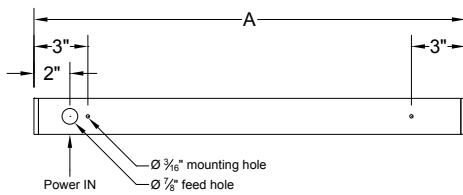
ORDERING CODE	LENGTH A	LENGTH B	LENGTH C	LENGTH D	LENGTH E
2	22-5/8"	22-3/8"	22-1/8"	16-5/8"	19-3/8"
3	33-5/8"	33-3/8"	33-1/8"	27-5/8"	30-3/8"
4	44-5/8"	44-3/8"	44-1/8"	38-5/8"	41-3/8"
5	55-5/8"	55-3/8"	55-1/8"	49-5/8"	52-3/8"
6	66-5/8"	66-3/8"	66-1/8"	60-5/8"	63-3/8"
7	77-5/8"	77-3/8"	77-1/8"	71-5/8"	74-3/8"
8	88-5/8"	88-3/8"	88-1/8"	82-5/8"	85-3/8"

RUN CONFIGURATION INFORMATION

ORDERING CODE	DESCRIPTION
SN	Single
ST	Starter
AD	Adder
TR	Terminator

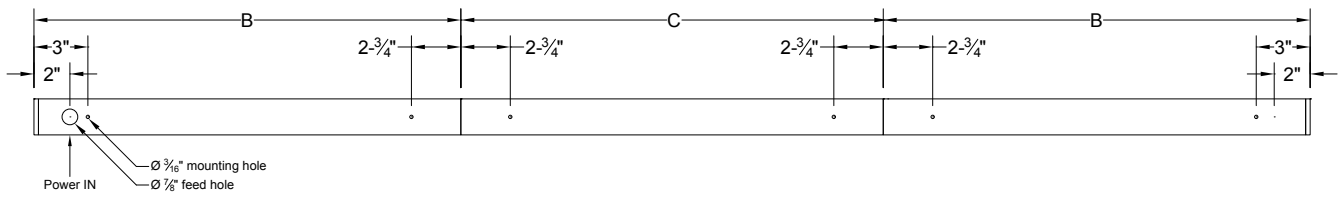
RUN INFORMATION

Back Plan - Surface Mount Single Fixture Option



SN

Back Plan - Surface Mount Continuous Run Option

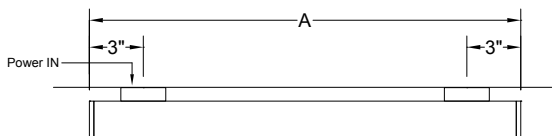


ST

AD

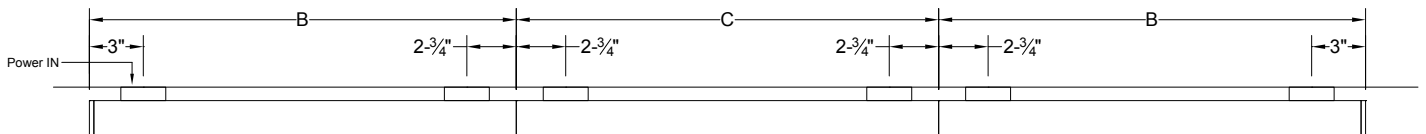
TR

Plan - Wall Mount Single Fixture Option



SN

Plan - Wall Mount Continuous Fixture Option



ST

AD

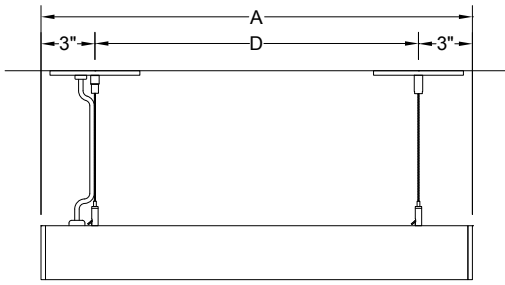
TR

BSS208 | **bodhi**

2" wide LED luminaire with flush lens

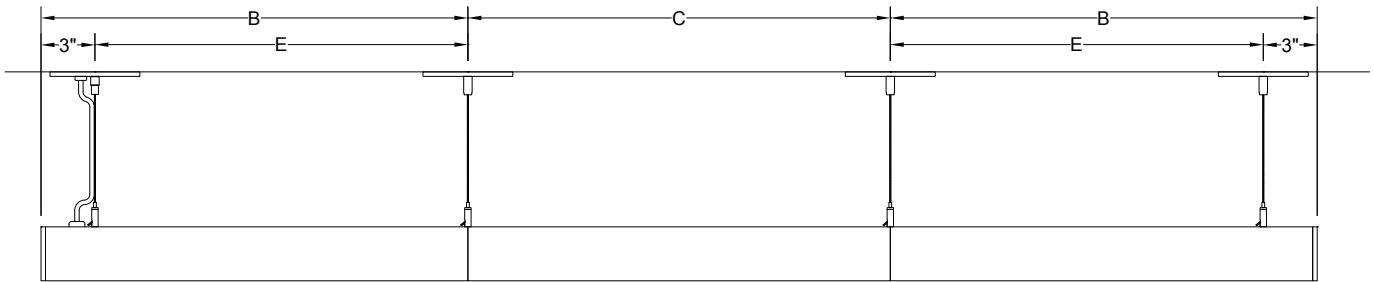
RUN INFORMATION

Side View - Cable Mount Single Fixture Option



SN

Side View - Cable Mount Continuous Run Option



ST

AD

TR