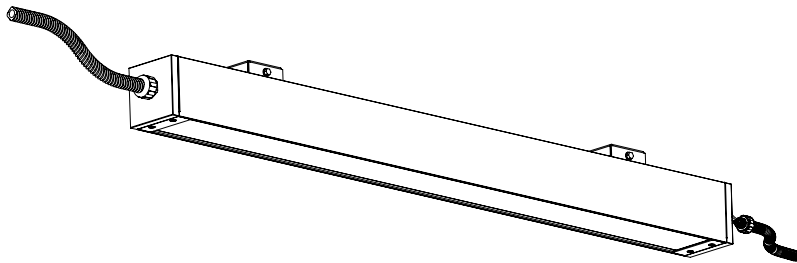
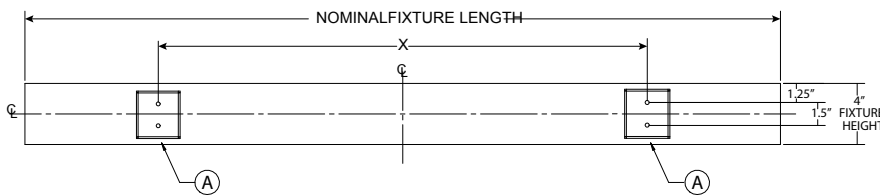


**INSTRUCTION SHEET**

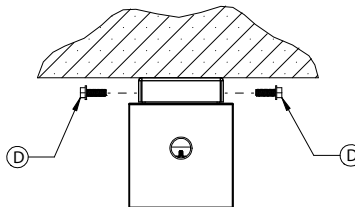
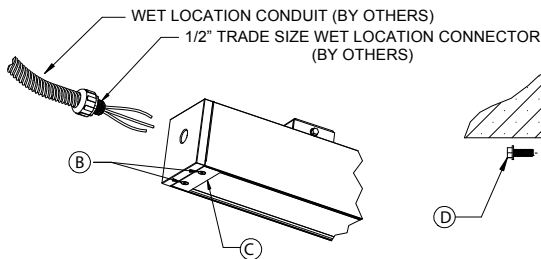
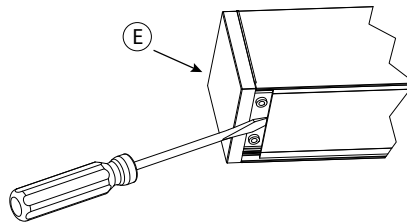
End Feeds - EFR | EFL | EF2



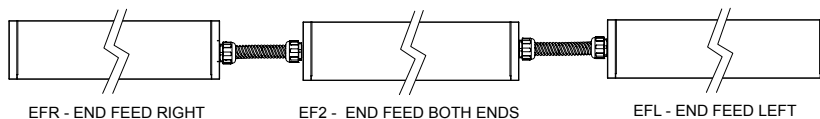
**BRACKET MOUNTING CENTERS**



NOMINAL FIXTURE LENGTH	X
2'	16"
3'	24"
4'	32"



**FEED TYPES**



**Mounting**

1. Install ceiling brackets (A) as shown using 1/4" bolts (by others) suitable for intended surface.
  2. Loosen captive screws (B) and remove endplates (C) from both ends.
  3. Remove lens by lifting from end. Use a flat blade screw driver (E) to pry loose. *Note:* take care not to damage lens or gasket.
  4. Remove reflector/liner.
  5. Mount fixture on ceiling brackets (A) and install supplied screws (D).
  6. Connect 1/2" flex conduit to fixture. *\*Note:* for wet locations flex conduit must be liquid tight and pipe thread sealant or teflon tape must be used on threads.
  7. Make wire connections inside fixture.
  8. Reinstall reflector/ liner
  9. Reinstall lens. *Note:* firmly press along entire length of lens to ensure a good seal.
  10. Reinstall both endplates (C).
- note:** Continuous run, provide for 1/8" between fixtures.

**Note:** To be installed by a qualified electrician per N.E.C. and all local codes.

**820-00030**  
V-0615