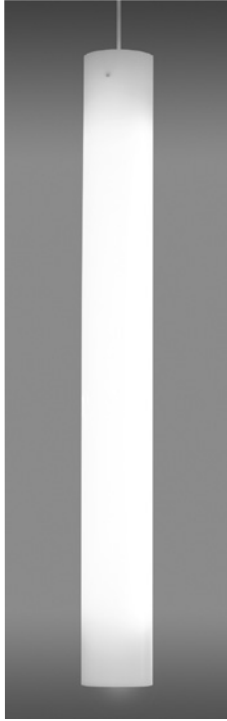


6" LUX WHITE LED CYLINDER WITH DOWNLIGHT

DELRAY
LIGHTING
INCORPORATED

6300-6" LED LUX



TYPE:

PROJECT:

ORDER NUMBER:

| Model# | LEDs | Finish | Voltage | Options | Downlight |
|--------|------|----------|---------|---------|-----------|
| 6314 | W30 | S-Silver | 1-120V | BDIM-W | B6MR16 |
| 6315 | W35 | W-White | 2-277V | | |
| 6316 | W40 | | | | |

Example:

| | | | | | |
|------|-----|---|---|--------|--------|
| 6316 | W40 | S | 2 | BDIM-W | B6MR16 |
|------|-----|---|---|--------|--------|

Other Options

- RD**—remote driver
- BLA**—pipe mount
- BLA/RD**—remote w/pipe
- XP**—extra pendant length (inches):

CONSTRUCTION

- Matte white acrylic diffuser provides even illumination.
- cUL listed for dry location only.

CANOPY

- **W**—white or **S**—silver, with matching cord.
- Standard mount is 6 ft. adjustable power cord. Order **XP** for extra pendant length.
- Hard stem also available. Order **BLA**.

LED DRIVERS

- Driver constant voltage, 100W/24V universal.
- For remote LED gear in accessible ceilings or panels, specify **RD**.
- Emergency not available. If EM is required, recommend use of inverter (by others).
- Standard and dimming drivers mounted inside 3" diameter, 12" long tube housing at ceiling. Mounts to all standard J-boxes.

LEDs

- Nichia Corp. NFSL757 linear board chips, available in white color temperatures of **W30** (3000° K), **W35** (3500° K), and **W40** (4000° K); matching the traditional CCT of existing incandescent, fluorescent, and metal halide lamps.
- CRI: 90.0
- R9 ≥ 50.0

OPTIONAL DOWNLIGHT

- Order **B6MR16**.
- Uses LED MR16 DC 12V. 9W 2-pin lamps (by others).
- Downlight does not dim.

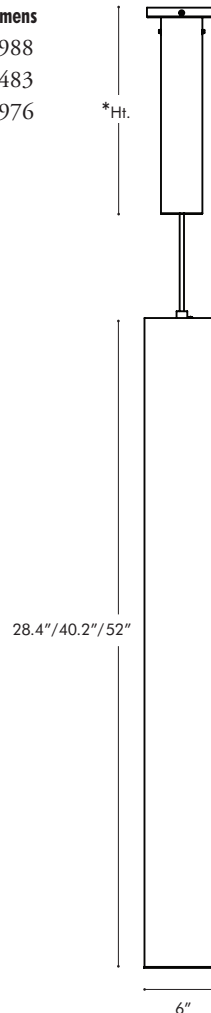
| Model | Length | Watts | Lumens |
|-------------|--------|--------|--------|
| 6314 | 2 ft. | 54 | 2988 |
| 6315 | 3 ft. | 80.5 | 4483 |
| 6316 | 4 ft. | 107.38 | 5976 |

Specify LED color:

- W30**—White (3000° K)
- W35**—White (3500° K)
- W40**—White (4000° K)

Driver canopy dimensions:

| Configuration | Ht.* |
|---------------|-------|
| Standard | 12.0" |
| MR16 | 16.3" |



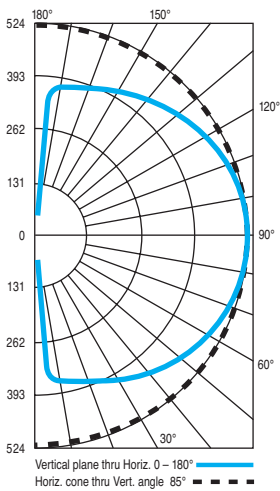
BURBANK,
CALIFORNIA,
91505
WWW.
DELRAY
LIGHTING.
COM

LED

6316.W35 - 4 ft.



CP DISTRIBUTION



COEFFICIENTS

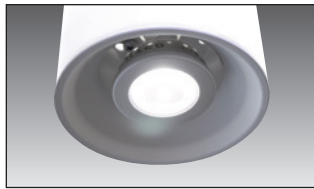
| % CEILING 80 (20% FLOOR) | | | |
|--------------------------|-----|-----|-----|
| % WALL | 70 | 50 | 30 |
| 0 | 107 | 107 | 107 |
| 1 | 93 | 87 | 81 |
| 2 | 83 | 73 | 65 |
| 3 | 75 | 63 | 54 |
| 4 | 68 | 55 | 45 |
| 5 | 62 | 48 | 39 |
| 6 | 56 | 43 | 34 |
| 7 | 52 | 38 | 29 |
| 8 | 48 | 35 | 26 |
| 9 | 45 | 31 | 23 |
| 10 | 42 | 29 | 21 |

NOTES

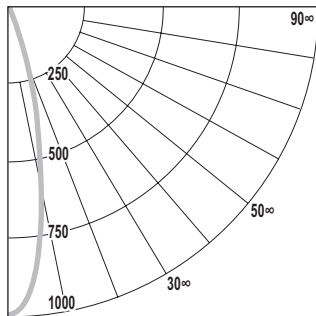
6316.W35 - 4 ft.
 3500° K white LED
 Total lumens: 5,977
 CRI: 90.0
 R9 ≥ 50.0

MR16

B6MR16-6" downlight



MR16 CP DISTRIBUTION



DIMMING DRIVER

BDIM-White

- For white LEDs only.
- Driver: 100W/24V constant voltage, 120/277.
- Use with 0-10V, purple/gray wire analog dimmers; with low end trim pot, and adjust low end to above flicker threshold.

NOTE: Multiple drivers must be mounted no less than 4 inches apart side-by-side, and 1 inch apart end-to-end, to avoid overheating.

ACRYLIC DIFFUSER CLEANING

Warning: Do not clean with ammonia based cleaners (e.g. Windex®). Use only water or cleaners specifically formulated for cleaning plastics.

6300 - 6" LED, LUX

Delray's *Lux* fixtures are second-generation LED luminaires that provide conventional footcandle levels at less than or equal to 1.4W/FT².

Lux provides the best lumen/watt ratio per fixture, as well as precise color temperature matching for multiple fixtures. Standard options include dimming, for scene control and energy management.

cUL rated for dry locations only.

LM-79 TEST SUMMARY - 6316.35

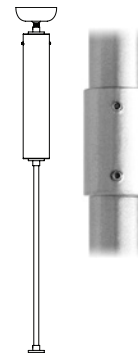
| | |
|--|-----------------|
| Driver: | Philips Advance |
| Total Lumens: | 5976.77 |
| Input Voltage (VAC/60Hz): | 120.00 |
| Input Current (Amp): | 0.90 |
| Input Power (W): | 107.38 |
| Input Power Factor: | 0.9973 |
| Efficacy: | 55.66 |
| Color Rendering Index (CRI): | 90.0 |
| Correlated Color Temperature (K): | 3990 |

MOUNTING OPTIONS

PIPE MOUNT

Order **BLA** mount for 3/8" IPS pipe. Length must be specified. Includes ball aligner canopy rated for 75 lbs. and mounts to standard J-boxes. Not for windy locations.

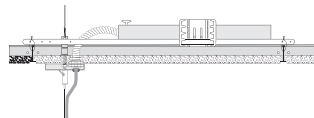
Pipe longer than 8 ft. will be shipped in two pieces—one 8 ft. section plus a second section for the balance—supplied with a painted, threaded pipe coupler, with set screws.



REMOTE DRIVER

Order **RD**. Install driver enclosure (supplied) maximum 16 ft. from fixture; must remain accessible.

NOTE: Multiple drivers must be mounted no less than 4 inches apart side-by-side, and 1 inch apart end-to-end, to avoid overheating.



*Max. Wiring Distance (at full load)

| Wire Size (AWG) | Distance (ft.) |
|-----------------|----------------|
| 18 | 18 |
| 16 | 29 |
| 14 | 46 |
| 12 | 71 |
| 10 | 120 |

MULTI-TUBE CONFIGURATIONS

Standard and custom solid acrylic collars may be added for decoration and earthquake code compliance.

