

FINELITE

E1-Indirect (E1-I) Linear



Date

Project

Type

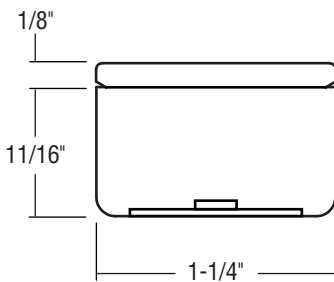
Comments



Patent Pending

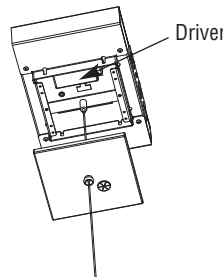
DESCRIPTION

E1-I Linear delivers exceptional performance in a low-profile linear form. It uses mid-power LEDs and a high performance optical design to spread light evenly, yielding a comfortable and energy efficient design. E1-I Linear is dimmable, easily serviceable and available in 2', 3', 4', and 8'* independent lengths and can be formed into runs.



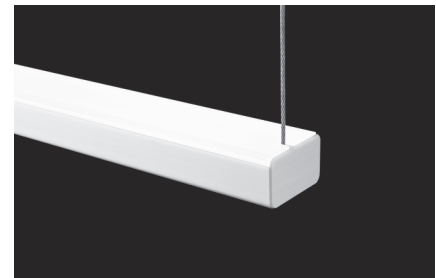
DIMENSIONS/LIGHT ENGINE:

E1-I Linear uses mid-power LEDs evenly distributed and paired with a precise diffuser to eliminate pixilation from viewable angles.



EASILY ACCESSIBLE DRIVERS:

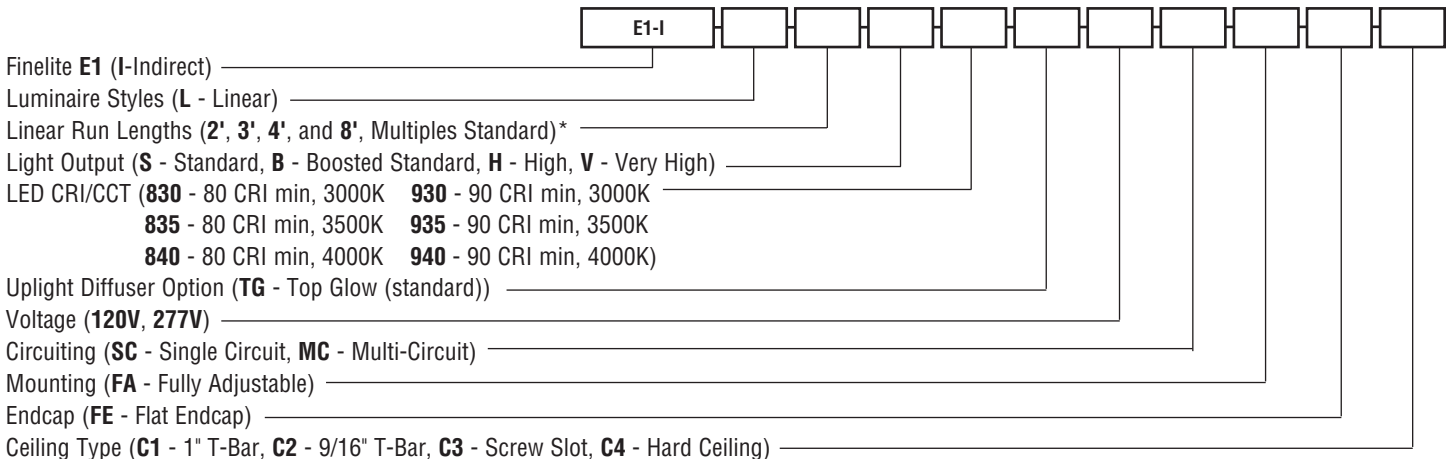
The drivers are easily accessible from below the ceiling without removing the luminaire.



TOP GLOW™ DIFFUSER:

The diffuser provides a soft uniform glow above the luminaire for a clean architectural element.

ORDERING GUIDE: Sample Number: E1-I - L - 4' - H - 835 - TG - 277V - SC - FA - FE - C1



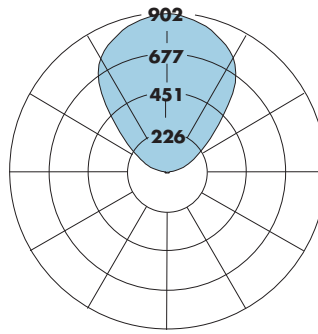
*Runs require a suspension point every 4' and a feed every 8'. Contact factory for independent 2' sections.

FINELITE

E1-Indirect (E1-I) Linear

PHOTOMETRY

Very High Output - 4' Luminaire (E1-I-L-4'-V-835-TG)
 Efficacy: 114 lumens per watt
 Total luminaire Output: 2251 lumens (563 lumens/ foot)
 19.7 watts (4.9 watts/ foot)
 CCT: 3500K; CRI: 80
 ITL LM79 Report 85174



CANDELA DISTRIBUTION						
	0	22.5	45.0	67.5	90.0	Flux
0	0	0	0	0	0	0
5	0	0	1	1	0	0
15	0	1	3	4	4	1
25	0	3	6	7	7	2
35	0	4	8	10	9	4
45	0	5	10	11	11	6
55	0	6	10	11	11	7
65	0	6	11	12	12	9
75	0	6	11	11	11	9
85	0	7	12	14	14	12
90	0	8	16	21	20	
95	19	24	30	39	37	35
105	110	94	83	93	97	100
115	265	227	174	164	167	195
125	447	417	335	285	277	314
135	612	588	558	487	455	417
145	738	716	708	697	686	441
155	823	805	803	796	796	370
165	875	864	864	859	858	244
175	899	899	896	894	893	85
180	902	902	902	902	902	

Total Light Output, 3500K, 80 CRI (Lumens) - 4' Luminaire			
S*	B*	H*	V**
921	1158	1751	2251

Light Output, 3500K, 80 CRI (Lumens Per Foot)			
S*	B*	H*	V**
230	290	438	563

Power, 3500K (Watts Per Foot)			
S*	B*	H*	V**
2.0	2.5	3.8	4.9

Efficacy, 3500K, 80 CRI (Lumens Per Watt)			
S*	B*	H*	V**
114	114	115	114

S - Standard Output, B - Boosted Standard Output, H - High Output, V - Very High Output

* Family Correlation based on 4' luminaire 3500K Very High Output (V) test - 120V.

** Correlation based on ITL report: 85174

Lumen Adjustment Factors - 80 CRI	
3000K	0.985
3500K	1.000
4000K	1.032

Lumen Adjustment Factors - 90 CRI	
3000K	0.746
3500K	0.760
4000K	0.789

Apply a lumen adjustment factor to calculate lumens for the desired CCT and CRI.

SAMPLE LUMEN ADJUSTMENT CALCULATION

High Output (H), 4000K, 90 CRI

Lumen Adjustment Factor = 0.789

$$\text{Total Light Output} = 1751 \text{ lm} \times 0.789 = 1382 \text{ lm}$$

$$\text{Total Light Output per Foot} = 438 \text{ lm/ft} \times 0.789 = 346 \text{ lm/ft}$$

$$\text{watts/foot} = 3.8 \text{ W/ft}$$

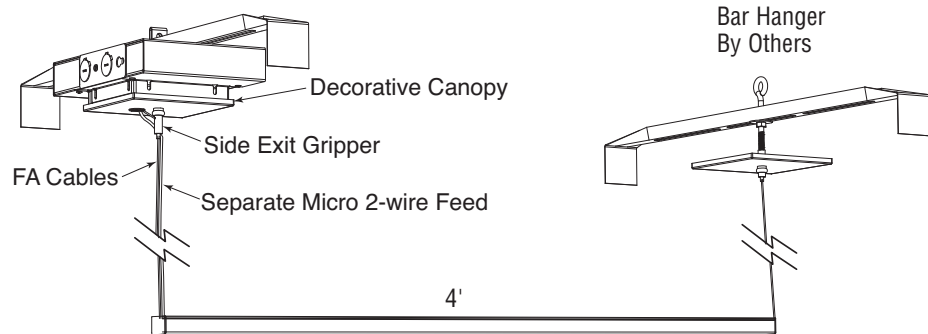
$$\text{Efficacy} = \frac{346 \frac{\text{lm}}{\text{ft}}}{3.8 \frac{\text{W}}{\text{ft}}} = 91 \text{ lm/W}$$

FINELITE

E1-Indirect (E1-I) Linear

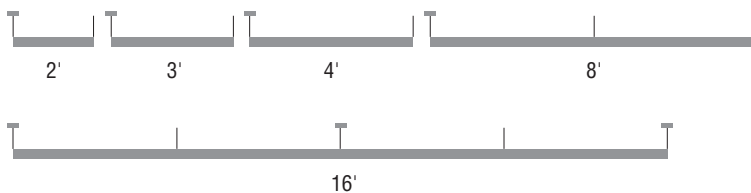
EASY INSTALLATION:

Specially designed mounting hardware and a unique canopy design makes E1-I Linear easy to install and maintain.



LENGTHS

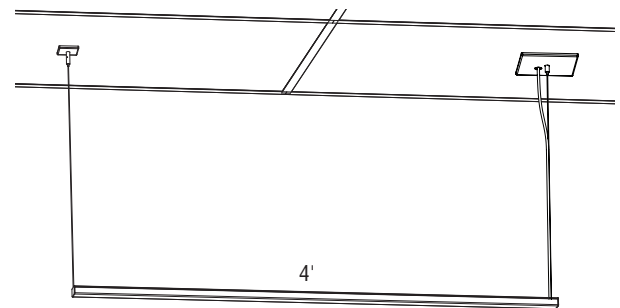
Standard 2', 3', and 4' section lengths can be combined to make longer runs. 8' length requires three suspension points. Runs require a suspension point every 4' and a feed every 8'. Contact factory for independent 2' sections.



┤ = Power Feed | = Suspension

MOUNTING

Standard off grid mounting.



SPECIFICATIONS

CONSTRUCTION: Precision cut 6061-T6 extruded aluminum body with steel endcaps. Top Glow™ diffuser snaps into place and is easily removed for service.

UPLIGHT DIFFUSER: The Top Glow™ diffuser is frost white standard, 89% transmissive, 99% diffusion. Coupled with light engine design, the diffuser spreads the light evenly for enhanced ceiling uniformity.

LIGHT OUTPUT: Four lumen packages available, Standard (S), Boosted Standard (B), High (H), and Very High (V). A separate chart summarizes lumen distribution and wattage. Light engines are replaceable.

LIGHT ENGINE: The replaceable light engines are made up of high performance mid-power LEDs and designed to distribute heat properly to maximize the life of the LEDs and the driver.

LUMEN MAINTENANCE: 90% of initial light output (L90) at 100,000+ hours; 70% of initial light output (L70) at 200,000+ hours.

DRIVER: Replaceable 120V/277V Constant Current Reduction dimming driver standard. Can be wired dimming or non-dimming. 0-10V dimming controls with a range of 10%- 100%. Dimming to 1% available;

consult factory. Driver is fully accessible from below the ceiling. Power Factor: 0.9. Total Harmonic Distortion (THD) <20%. Step-dimming driver (limited programmable outputs. Contact Factory). Expected driver lifetime: 100,000 hours.

ELECTRICAL: 120V or 277V prewired. Emergency to generator/ inverter wiring, internal generator transfer switch, nightlight wiring. Please note: Battery backup not available.

MOUNTING: Standard E1-I Linear mounting is off-grid. Mounting hardware supplied by Finelite includes ¼ - 20 hardware. Retention arm (bar hanger) for connection to ceiling grid or joists is by others. LED drivers are 100% accessible from below ceiling by simply lowering canopy.

FINISH: Finelite Signal White powder coat finish standard. Optional adders: 185 colors available using Tiger Drylac's RAL color chart.

SUPPORT CABLE/FEED: (FA) 50" fully adjustable aircraft cable standard with a safety stop. Micro 2-wire feed power cable. Contact factory for additional lengths up to 150". Power feed required for every 8'.

LENGTHS: Standard 2', 3', and 4' section lengths can be combined to make longer runs. 8' length requires three suspension points. Runs require a suspension point every 4'. Contact factory for independent 2' sections.

WEIGHT: 0.4 lbs per foot. 4' E1-I Linear weighs 1.6 lbs.

LABELS: Luminaire and electrical components are ETL-listed conforming to UL 1598 in the U.S.A. and CAN/CSA C22.2 No. 250.0 in Canada. In accordance with NEC Code 410.73 (G), this luminaire contains an internal driver disconnect. Damp Location. Finelite products use electronic components that are RoHS compliant, and the mechanical components of the luminaire have been verified to not knowingly contain any restricted substances listed per RoHS Directive 2002/95/EC.

WARRANTY: E1-I Linear comes standard with a 10-year performance-based warranty on all components.

Patent Pending