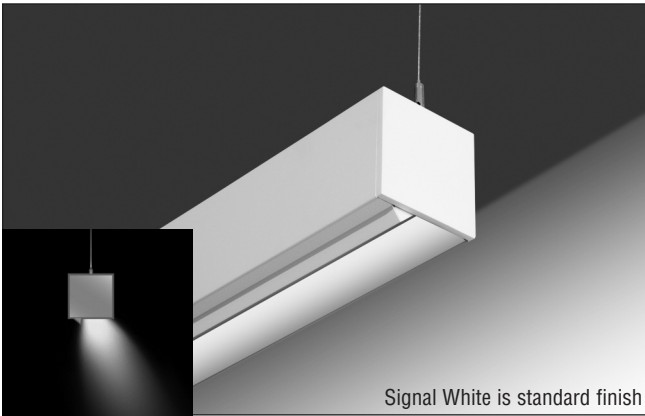


# FINELITE

## High Performance 4" Aperture (HP-4) Wall Wash Pendant Direct



Date

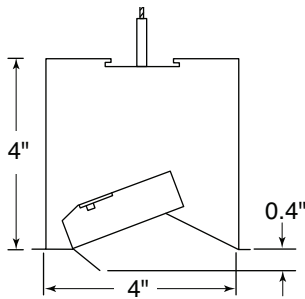
Project

Type

Comments

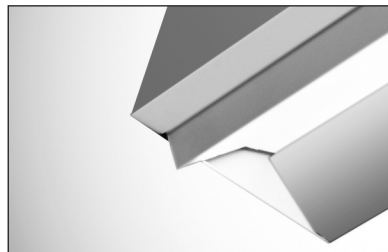
### DESCRIPTION

HP-4 LED Wall Wash Pendant Direct (HP-4 WW-D) is a patented, high performance luminaire that delivers excellent visual comfort and uniform illumination. Advanced optical design and mid-power LEDs deliver an efficient, long-lasting luminaire free of glare and socket shadows for single and continuous lighting applications.



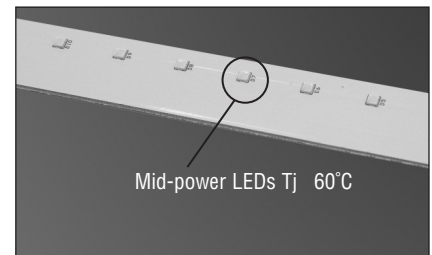
### DIMENSIONS & LIGHT ENGINE

Asymmetric distribution is attained with mid-power LEDs distributed evenly and paired with a precise diffuser.



### KICKER REFLECTOR

The standard kicker reflector delivers light high on the vertical surface and provides excellent glare control. The kicker reflector is easily removed for open distribution.

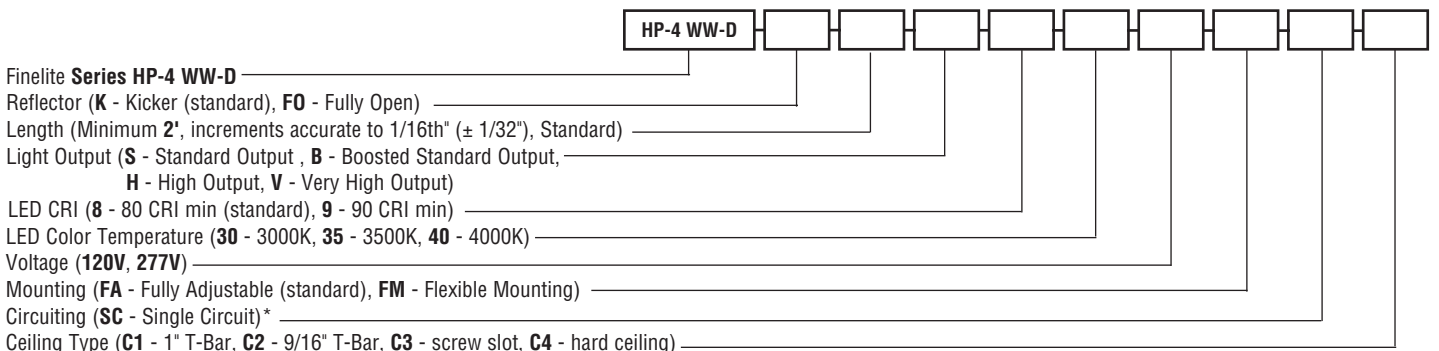


### THERMAL MANAGEMENT

Mid-power LEDs allow heat to be fully dissipated without the need for additional heat sinks.

### ORDERING GUIDE

Sample Number: HP-4 WW-D - K - 32' - S - 8 - 35 - 120V - FA - SC - C1



\*Contact factory for switching options.

Protected by one or more US Patents: 8915613; D702,391; D702,390; D700,732

A brand of Legrand

Finelite, Inc. • 30500 Whipple Road • Union City, CA 94587-1530 • (510) 441-1100 • Fax: (510) 441-1510 • www.finelite.com

# FINELITE

## High Performance 4" Aperture (HP-4) Wall Wash Pendant Direct

### PHOTOMETRY

HP-4-WW-D-K-V-835

Very High Output - 4' Luminaire With Kicker

Efficacy (Lumen per watt): 91.7

Total luminaire output: 1816 Lumens (454 lumens/foot)

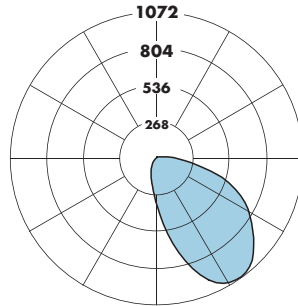
21.5 Watts (5.4 watts/foot)

Peak Candela Value: 1072 @ 35°

CCT: 3500K

CRI: 80

ITL LM79 Report 85130



CANDLEPOWER SUMMARY						
	0.0	22.5	45	67.5	90	Flux
0	373	373	373	373	373	
5	495	456	374	306	281	37
15	791	649	366	209	175	121
25	1018	818	347	147	115	217
35	1072	896	315	101	72	294
45	996	848	271	62	35	328
55	842	708	214	28	6	311
65	673	536	149	5	6	259
75	407	363	84	4	5	173
85	157	137	25	0	0	70
90	75	54	0	0	0	

Total Light Output, 3500K, 80 CRI (Lumens) - 4' Luminaire			
S*	B*	H*	V**
743	935	1412	1816

Light Output, 3500K, 80 CRI (Lumens Per Foot)			
S*	B*	H*	V**
186	234	353	454

Power (Watts Per Foot)			
S*	B*	H*	V**
2.0	2.5	3.8	5.0

Efficacy, 3500K, 80 CRI (Lumens Per Watt)			
S*	B*	H*	V**
90.9	92.1	92.4	91.7

S - Standard Output, B - Boosted Standard Output, H - High Output, V - Very High Output

\* Family Correlation based on 4' luminaire 3500K Very High Output (V) test - 120V.

\*\* Based on ITL report: 85130

Lumen Adjustment Factors - 80 CRI	
3000K	0.985
3500K	1.000
4000K	1.032

Lumen Adjustment Factors - 90 CRI	
3000K	0.746
3500K	0.760
4000K	0.789

Apply a lumen adjustment factor to calculate lumens for the desired CCT and CRI.

### SAMPLE LUMEN ADJUSTMENT CALCULATION

High Output (H), 4000K, 90 CRI

Lumen Adjustment Factor = 0.789

$$\text{Total Light Output} = 1412 \text{ lm} \times 0.789 = 1114 \text{ lm}$$

$$\text{Total Light Output per Foot} = 353 \text{ lm/ft} \times 0.789 = 279 \text{ lm/ft}$$

$$\text{watts/foot} = 3.8 \text{ W/ft}$$

$$\text{Efficacy} = \frac{279 \frac{\text{lm}}{\text{ft}}}{3.8 \frac{\text{W}}{\text{ft}}} = 73.4 \text{ lm/W}$$



# FINELITE

## High Performance 4" Aperture (HP-4) Wall Wash Pendant Direct

### SPECIFICATIONS

**CONSTRUCTION:** Precision-cut 6061-T6 extruded aluminum body. Internal joiner system, plug-together wiring, standard.

**ENDCAPS:** Flat diecast aluminum endcaps add 1/4" to each end of luminaire.

**REFLECTORS:** The standard semi-specular aluminum (SSA) kicker (K) reflector delivers light high on the vertical surface. The kicker reflector can be easily removed for open distribution (FO).

**DIFFUSER:** Luminaires are standard with frosted lenses. All lenses are UV-stabilized and impact resistant virgin acrylic. Frosted lenses are 1/8" thick. 12' maximum lens length.

**LIGHT OUTPUT:** Four lumen packages available, Standard Output (S), Boosted Standard Output (B), High Output (H), and Very High Output (V). A separate chart summarizes lumen distribution and wattage. Light engines are replaceable.

**LUMEN MAINTENANCE:** 90% of initial light output (L90) at 100,000+ hours; 70% of initial light output (L70) at 200,000+ hours.

**DRIVER:** Replaceable 120V/277V Constant Current Reduction dimming driver standard. Can be wired dimming or non-dimming. 0-10V dimming controls with a range of 10%- 100%. Dimming to 1% available; consult factory. Driver is fully accessible from below the ceiling. Power Factor: 0.9. Total Harmonic Distortion (THD) <20%. Expected driver lifetime: 100,000 hours. controls with a range of 100-10%. Dali driver also available; Contact factory.

**LUTRON DRIVER OPTIONS: LUTES1** (Hi-lume 1% EcoSystem with Soft-On, Fade to Black dimming (LDE1 series)); **LUTES5** (5-Series 5% EcoSystem (LDE5 Series)), **LUT2W** (Hi-lume 1% 2-wire, 120V forward phase dimming (LTEA series)); Contact factory for availability of discontinued Lutron drivers, L3DA-3-wire and L3DA EcoSystem.

**ELECTRICAL:** Optional emergency to generator/inverter wiring, internal generator transfer switch, nightlight wiring, step-dimming driver, backup battery. Factory-choice low-profile backup battery available. 8' minimum fixture length for low profile battery pack. Bodine BSL722 battery pack also available; 4' minimum fixture length. Backup battery delivers 2000 lumens. One 4' section will be illuminated in emergency mode.

**MOUNTING:** 50" Fully Adjustable (FA) plated steel aircraft cable with safety stop hardware standard. Contact factory for additional lengths up to 150". The Flexible Mounting Bracket (FM) adjusts the suspension points to accommodate existing architecture. Suspension points adjust up to 2' in from the end of 8' or 12' fixture lengths and up to 1' in on shorter lengths.

**FEED:** Standard with one 18-gauge/5-conductor single-circuit feed. 14-gauge feed used when fixture current exceeds 5 amps.

**LENGTHS:** Any length, 2-foot minimum, in increments down to 1/16th-inch ( $\pm 1/32"$ ). 12-foot maximum section length.

**LABELS:** Fixture and electrical components are ETL-listed conforming to UL 1598 in the U.S.A. and CAN/CSA C22.2 No. 250.0 in Canada. In accordance with NEC Code 410.130 (G), this luminaire contains an internal driver disconnect. Damp Location. Finelite products use electronic components that are RoHS compliant, and the mechanical components of the luminaire have been verified to not knowingly contain any restricted substances listed per RoHS Directive 2011/65/EU.

**WEIGHT:** 2.9 lb/ft.

**WARRANTY:** 10-year performance-based warranty on all standard components. Optional accessories such as emergency battery packs are covered by their individual manufacturer warranties.

# FINELITE

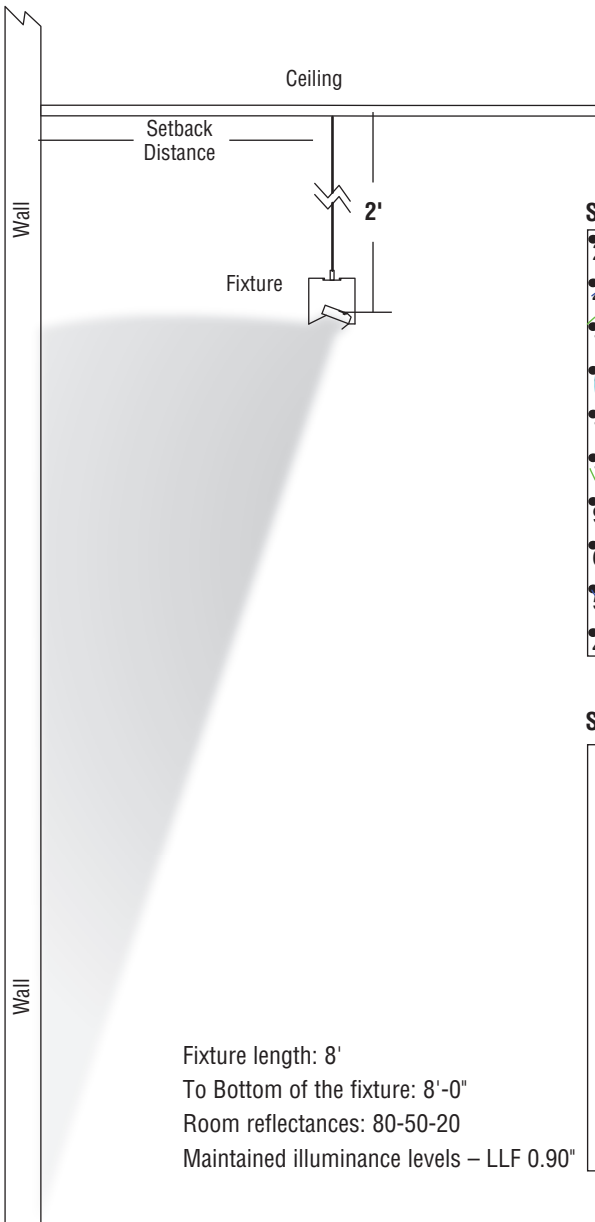
## High Performance 4" Aperture (HP-4) Wall Wash Pendant Direct

### Setback Info and Application Data

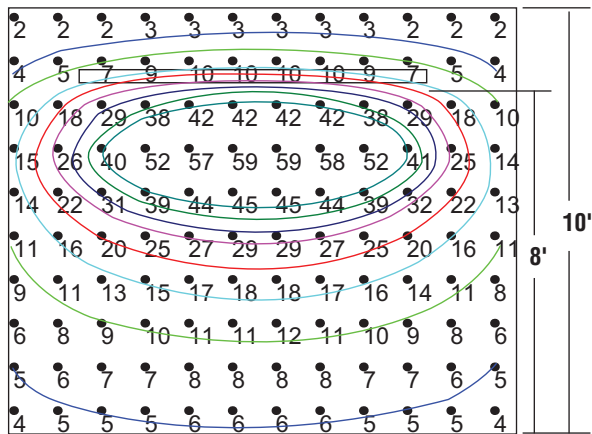
High Output with Kicker

Total luminaire output: 1450 Lumens (363 lumens/foot)  
19.1 Watts (4.8 watts/foot)

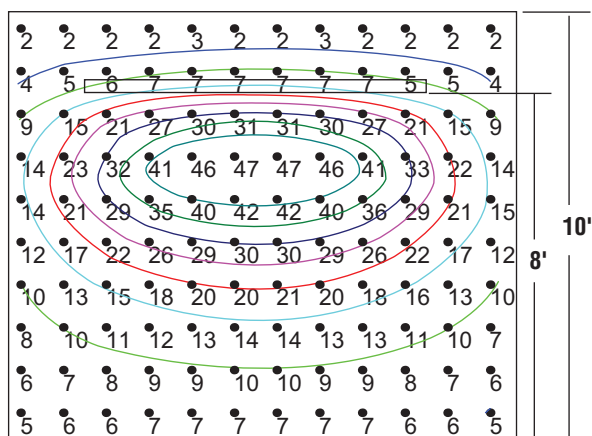
CCT: 3500K



Setback Distance - 2'



Setback Distance - 2.5'



Fixture length: 8'  
To Bottom of the fixture: 8'-0"  
Room reflectances: 80-50-20  
Maintained illuminance levels – LLF 0.90"