

CATALOG #: \_\_\_\_\_

Type: \_\_\_\_\_

PROJECT: \_\_\_\_\_

## FEATURES

- Small profile installs inconspicuously in confined spaces
- Delivers uniform, glare-free task lighting for work areas
- Housing keyhole slots and knockouts provide quick and easy installation
- Individual or continuous row mounting
- All-welded construction provides long lasting performance
- Available with attractive rocker switch for easy on/off
- Optional anti-microbial white finish available for use in healthcare applications
- Maximize energy savings with efficacies up to 117 lm/W
- Made Right Here® in the USA

## SPECIFICATIONS

- HOUSING** – 20-gauge die-formed, welded C.R.S.
- SHIELDING** – Diffuse matte acrylic, .080" thick.
- FINISH** – 92% minimum average reflective white polyester powder coat bonded to phosphate-free, multi-stage pretreated metal. All parts painted after fabrication to facilitate installation, increase efficiency, and inhibit corrosion.
- ELECTRICAL** – High quality mid-power LED board(s). See fixture performance data for lumen maintenance. 25°C maximum ambient operating temperature.
- MOUNTING** – Surface.
- LISTINGS** –
  - cCSAus certified as luminaire suitable for dry or damp locations.
- WARRANTY** – 5-year limited warranty, see [hew.com/warranty](http://hew.com/warranty).

## ORDERING EXAMPLE: 1SF 4 - L24/835 - AF12125 - OPTIONS - DRV - UNV

### ORDERING INFO

SERIES	LENGTH	LUMENS <sup>[1]</sup>	CRI	CCT	SHIELDING
1SF	1 1'	1'	8 80	30 3000K	<b>DMA</b> Diffuse matte acrylic, .080" thick
	2 2'	L6 600lm		35 3500K	<b>AF12125</b> Frosted acrylic, pattern #12, .125" thick
	3 3'	2'		40 4000K	
	4 4'	L12 1,200lm			
		3'			
		L18 1,800lm			
		4'			
		L24 2,400lm			

### OPTIONS

- GCO** Grounded convenience outlet <sup>[2]</sup>
- C&P/120** 6-1/2' cord and plug, NEMA 5-15P <sup>[3]</sup>
- WRS/120** White rocker switch <sup>[4]</sup>
- AMW** Anti-microbial white finish

### DRIVER

- DRV** Driver prewired for non-dimming applications
- DIM** Dimming driver prewired for 0-10V low voltage applications

### VOLTAGE

- 120** 120V
- 277** 277V
- UNV** 120-277V

### OCCUPANCY SENSOR

- OCCLV OSF10-IOW** Passive infrared sensor <sup>[5]</sup>

## NOTES

- Lumen output based on 3500 CCT. Actual lumens may vary +/-5%.
- 120V only; not available with 1' fixture; cannot be used with occupancy sensor in 2' fixture.
- 120V only.
- 120V only.
- Factory-installed. 120V or 277V only. Not available with 1' fixture.



# 1SF LED Solid Front Under Cabinet Light

## FIXTURE PERFORMANCE DATA

	LED PACKAGE	DELIVERED LUMENS	WATTAGE	EFFICACY (lm/W)	LUMEN MAINTENANCE		
					L80	L85	L90
1	L6	610	5.9	102.9	>72000	>72000	50,000
2	L12	1,283	11.4	112.7	>72000	58,000	36,000
3	L18	1,857	16.0	116.4	>72000	>72000	50,000
4	L24	2,435	20.8	117.2	>72000	58,000	36,000

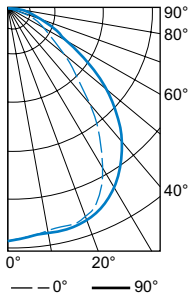
## MULTIPLIER TABLE

80 CRI	COLOR TEMPERATURE	
	CCT	CONVERSION FACTOR
	3000K	0.99
3500K	1.00	
4000K	1.03	

- Photometrics tested in accordance with IESNA LM-79. Results shown are based on 25°C ambient temperature.
- Wattage shown is average for 120V through 277V input.
- Results based on 3500K, 80 CRI, actual lumens may vary +/-5%
- Predicted lumen maintenance calculated from LED manufacturer IES LM-80 data and In situ temperature measurement.
- Predicted lumen maintenance calculated in accordance with IES TM-21 per Energy Star (R) TM-21 Calculator rev. 02.08.16.
- Use multiplier table to calculate additional options.

## PHOTOMETRY

1SF-4-L24/835-AF12125 Total Luminaire Output: 2435 lumens; 29 Watts | Efficacy: 84.1 lm/W | 80 CRI; 3500K CCT

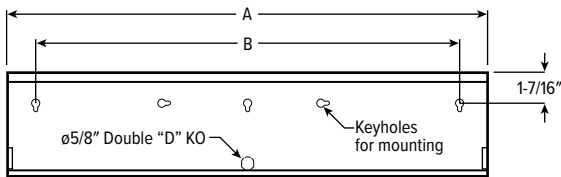


VERTICAL ANGLE	HORIZONTAL ANGLE			ZONAL LUMENS
	0°	45°	90°	
0	1077	1077	1077	102
10	1045	1049	1060	297
20	1032	1043	1049	457
30	875	933	976	514
40	589	710	819	452
50	340	453	598	318
60	184	232	335	177
70	92	103	138	84
80	50	50	50	36
90	17	18	10	0

LUMEN SUMMARY	ZONE	LUMENS	% FIXTURE
	0 - 30	855	35
	0 - 40	1369	56
	0 - 60	2139	88
	0 - 90	2435	100
	0 - 180	2435	100

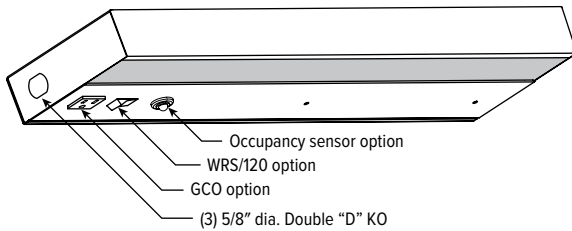
## FIXTURE DETAILS

### BACK VIEW

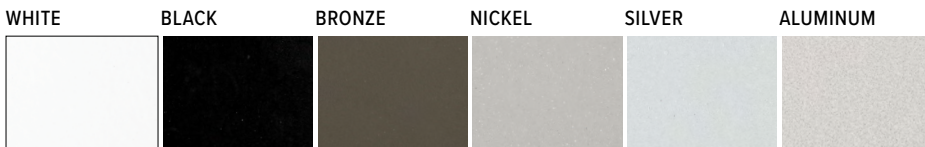


NOMINAL LENGTH	ACTUAL LENGTH (A)	ACTUAL LENGTH (B)
1'	12-1/8"	7-1/2"
2'	22-5/8"	20"
3'	34-3/8"	29"
4'	46-1/4"	38"

Back of housing provided with adequate keyhole slots and knockout for mounting and wiring.



## FINISH OPTIONS



For custom color, please specify RAL code or a manufacturer code with description. All custom colors other than RAL require two sample swatches, minimum 1" square.

