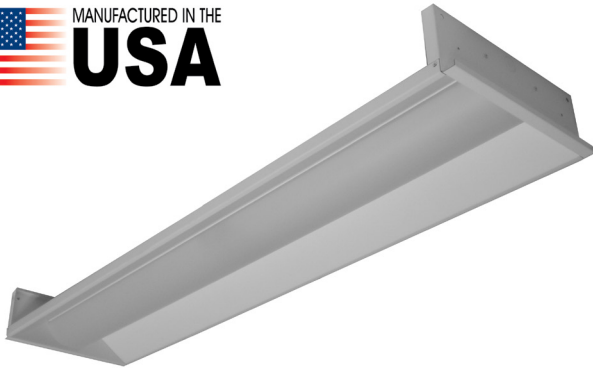




RECESSED - LED

Job Name	Type
----------	------

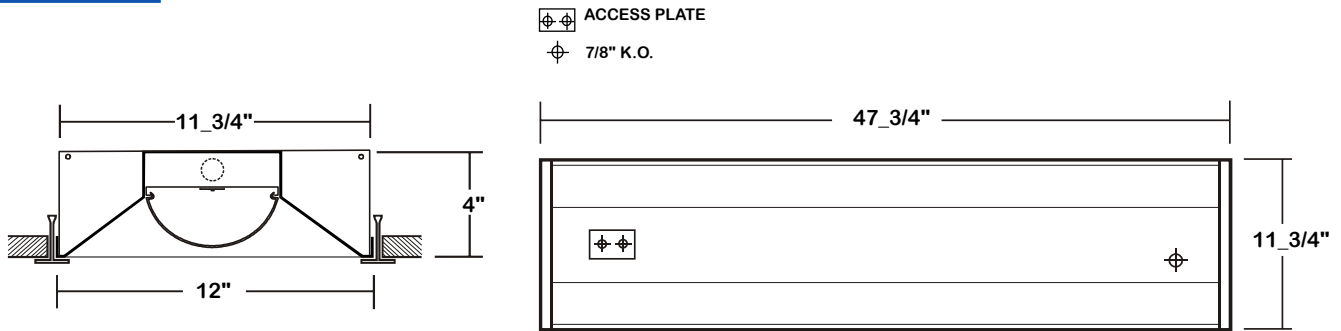


3-GDC310 SERIES 1X4

- Direct recessed mounted LED luminaries for inverted T-bar ceilings.
- Frosted micro linear prism acrylic lens, prism on inside of the lens.
- High reflectance, low gloss matte white finish.
- High efficiency drivers coupled with long-life LEDs, service life up to 148,000 hours (L70).



DIMENSIONS



ORDERING GUIDE

Example: **3-GDC310** - **4K** - **4L** - **BPL** - **1DRDM** - **UNV** - **1** / **840**

<p>SERIES</p> <p>LED SYSTEM LUMEN</p> <p>2K-Nominal 2000 Lumens LED System 4K-Nominal 4000 Lumens LED System 6K-Nominal 6000 Lumens LED System 8K-Nominal 8000 Lumens LED System *Additional Luman Packages Available</p> <p>ELECTRICAL OPTION</p> <p>LEAVE BLANK IF NOT SPECIFIED BPL- Emergency Battery Pack Additional Electrical Options</p>	<p>LENGTH</p> <p>4L- Nominal 4'</p>	<p>CRI/CCT</p> <p>835- 80+CRI / 3500K Color Temp. 840- 80+CRI / 4000K Color Temp. 850- 80+CRI / 5000K Color Temp. *Additional Color Temp. Available</p> <p># OF LED ROW</p> <p>1- One LED Row</p> <p>VOLTAGE</p> <p>UNV- 120V-277V</p> <p>DRIVER INFO.</p> <p>1DRDM- 0-10V Dimming Additional Driver Options</p>
---	--	--




Los Angeles Lighting Mfg. Co. El Monte / California
 TEL: 626-454-8300 FAX: 626-454-8399 www.lalighting.com

RECESSED - LED

3-GDC310 1X4

SYSTEM DATA

Nominal Size	LED Lumen Package	CRI/CCT	Delivered Lumens	System Watts	Luminaire Efficacy	Fluorescent Equivalent	IES Files	Photometric Report
1x4	2K *	835	2005 LM	16.8 W	119.3 LPW	1-F32T8	*	 Click Here
		840	1887 LM	17 W	111 LPW	1-F32T8	*	
		850	1928 LM	17.3 W	111 LPW	1-F32T8	*	
	4K *	835	3808 LM	34.5 W	110.4 LPW	2-F32T8	*	
		840	3395 LM	34.3 W	99 LPW	2-F32T8	*	
		850	3420 LM	34.5 W	99 LPW	2-F32T8	*	
	6K	840	5623 LM	52.3 W	107.5 LPW	3-F32T8	LA-T2458	
	8K	840	7543 LM	66.4 W	113.6 LPW	4-F32T8	LA-T2459	

Note: System data above are based on 120V input voltage.

Actual performance may differ as a result of end-user environment and application.

System data and specifications subject to change without notice.



* Information will be available soon.

SPECIFICATIONS

- TYPE Direct recessed mounted LED luminaires for inverted T-bar ceilings.
- CONSTRUCTION 22 ga. cold rolled steel housing/reflector.
- FINISH High reflectance, low gloss matte white finish
- OPTICS Frosted micro linear prism acrylic lens, prism on inside of the lens.
- LED SYSTEM High efficiency drivers coupled with long-life LEDs, service life greater than 50,000 hours (L70).
- WIRING Universal voltage 120v thru 277v.
- WARRANTY 5-Year Limited Warranty.
- LISTING U. L. Listed. Suitable for damp locations.
Compatible with UL Fire-Rated Ceiling Assemblies.
DesignLights Consortium® (DLC) qualified product. Not all versions of this product may be DLC qualified.
Please check the DLC Qualified Products List at www.designlights.org/QPL to confirm which versions are qualified.



Los Angeles Lighting Mfg. Co. El Monte / California

TEL: 626-454-8300 FAX: 626-454-8399 www.lalighting.com

LED lighting facts

3-GDC310-2K-4L-1DRDM-UNV-1/835

- 2000 Lumens System
- L70 performance at 148,000 hours



LED
LA Lighting

lighting facts®

A Program of the U.S. DOE

Light Output (Lumens)	1871
Watts	16.92
Lumens per Watt (Efficacy)	111

Color Accuracy	85
Color Rendering Index (CRI)	

Light Color

Correlated Color Temperature (CCT)

3537 (Bright White)

Warm White
Bright White
Daylight

2700K
3000K
4500K
6500K

All results are according to IESNA LM-79-2008: *Approved Method for the Electrical and Photometric Testing of Solid-State Lighting*. The U.S. Department of Energy (DOE) verifies product test data and results.

Visit www.lightingfacts.com for the *Label Reference Guide*.

Registration Number: -NXW1X2 (11/3/2015)

Model Number: 3-GDC310-2K-4L-1DRDM-UNV-1/835

Type: Luminaire - Troffer/Grid Ceiling

3-GDC310-4K-4L-1DRDM-UNV-1/835

- 4000 Lumens System
- L70 performance at 148,000 hours



LED
LA Lighting

lighting facts®

A Program of the U.S. DOE

Light Output (Lumens)	3393
Watts	34.18
Lumens per Watt (Efficacy)	99

Color Accuracy	85
Color Rendering Index (CRI)	

Light Color

Correlated Color Temperature (CCT)

3557 (Bright White)

Warm White
Bright White
Daylight

2700K
3000K
4500K
6500K

All results are according to IESNA LM-79-2008: *Approved Method for the Electrical and Photometric Testing of Solid-State Lighting*. The U.S. Department of Energy (DOE) verifies product test data and results.

Visit www.lightingfacts.com for the *Label Reference Guide*.

Registration Number: -57ZQK6 (11/3/2015)

Model Number: 3-GDC310-4K-4L-1DRDM-UNV-1/835

Type: Luminaire - Troffer/Grid Ceiling

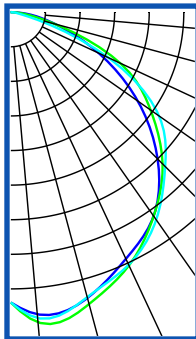
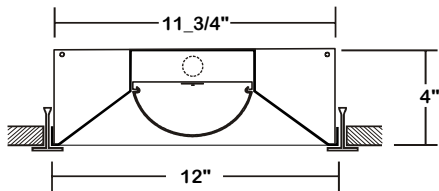
This Space is intentionally left blank.



PHOTOMETRIC DATA - 3-GDC310, 1X4

3-GDC310-6K-4L-1DRDM-UNV-1/840

TEST NO.=LA-2458
 LED TYPE= 48 LED MODULE
 NO. OF MODULE=2
 SYSTEM WATT (W)=52.3
 CRI ≥ 80
 L70(Hrs.) ≥ 50,000
 PHOTOMETRY TYPE=C



CANDLEPOWER

ANGLE	END	45	CROSS
0	2002	2002	2002
5	1948	1995	1951
15	1917	1911	1905
25	1776	1792	1802
35	1584	1613	1625
45	1322	1382	1417
55	990	1102	1144
65	630	761	676
75	301	290	133
85	85	52	30
90	3	1	1
95	0	0	0
105	0	0	0
115	0	0	0
125	0	0	0
135	0	0	0
145	0	0	0
155	0	0	0
165	0	0	0
175	0	0	0
180	0	0	0

ZONAL LUMEN SUMMARY

DEGREES	LUMENS	% LAMP	% FIXTURE
0-30	1559	25.8	27.7
0-40	2569	42.5	45.7
0-60	4607	76.3	81.9
0-90	5622	93.1	100.0
90-120	1	0.0	0.0
90-150	1	0.0	0.0
90-180	1	0.0	0.0
0-180	5623	93.7	100.0

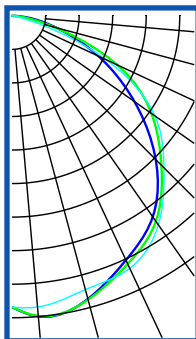
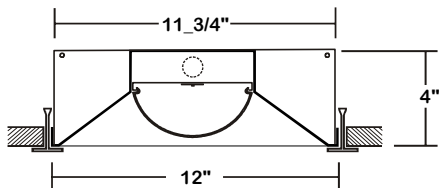
Luminaire Output= 5623 lumens
 Luminaire Efficacy = 107.5 LPW

SPACING CRITERION

ALONG	ACROSS
1.25	1.27

3-GDC310-8K-4L-1DRDM-UNV-1/840

TEST NO.=LA-2459
 LED TYPE= 72 LED MODULE
 NO. OF MODULE=2
 SYSTEM WATT (W)=66.4
 CRI ≥ 80
 L70(Hrs.) ≥ 50,000
 PHOTOMETRY TYPE=C



CANDLEPOWER

ANGLE	END	45	CROSS
0	2549	2549	2549
5	2643	2638	2559
15	2566	2572	2480
25	2359	2396	2440
35	2148	2196	2234
45	1779	1849	1880
55	1309	1490	1527
65	835	1018	913
75	402	384	181
85	109	67	38
90	5	2	1
95	0	0	0
105	0	0	0
115	0	0	0
125	0	0	0
135	0	0	0
145	0	0	0
155	0	0	0
165	0	0	0
175	0	0	0
180	0	0	0

ZONAL LUMEN SUMMARY

DEGREES	LUMENS	% LAMP	% FIXTURE
0-30	2081	25.7	27.6
0-40	3459	42.7	45.9
0-60	6188	76.3	82.0
0-90	7543	93.0	100.0
90-120	1	0.0	0.0
90-150	1	0.0	0.0
90-180	1	0.0	0.0
0-180	7543	93.1	100.0

Luminaire Output= 7543 lumens
 Luminaire Efficacy = 113.6 LPW

SPACING CRITERION

ALONG	ACROSS
1.31	1.35

This Space is intentionally left blank.

This Space is intentionally left blank.

