



# RECESSED - LED

Job Name \_\_\_\_\_ Type \_\_\_\_\_

## 3-GDC320 SERIES 2X2 & 2X4

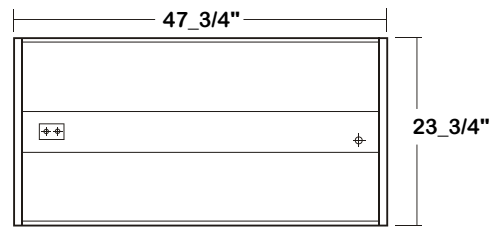
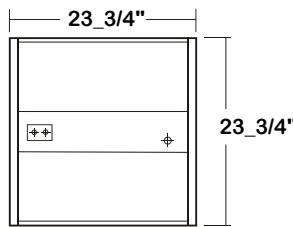
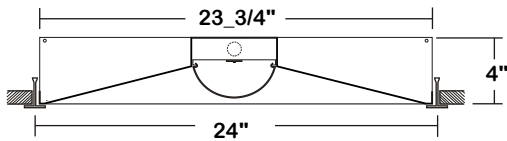


- Direct recessed mounted LED luminaires for inverted T-bar ceilings.
- Frosted micro linear prism acrylic lens, prism on inside of the lens.
- High reflectance, low gloss matte white finish.
- High efficiency drivers coupled with long-life LEDs, service life up to 148,000 hours (L70).



### DIMENSIONS

⊕ ⊕ ACCESS PLATE  
⊕ 7/8" K.O.



### ORDERING GUIDE

Example: **3-GDC320** - **4K** - **4L** - **BPL** - **1DRDM** - **UNV** - **1** / **840**  
**3-GDC320** - [ ] - [ ] - [ ] - [ ] - **UNV** - **1** / [ ]

**SERIES**

**LED SYSTEM LUMEN**

- 2X2**
- 1K-Nominal 1000 Lumens LED System
  - 2K-Nominal 2000 Lumens LED System
  - 3K-Nominal 3000 Lumens LED System
  - 4K-Nominal 4000 Lumens LED System
- 2X4**
- 2K-Nominal 2000 Lumens LED System
  - 4K-Nominal 4000 Lumens LED System
  - 6K-Nominal 6000 Lumens LED System
  - 8K-Nominal 8000 Lumens LED System
- \*Additional Lumen Packages Available

**LENGTH**

- 2L- Nominal 2'
- 4L- Nominal 4'

**ELECTRICAL OPTION**

**BPL**- Emergency Battery Pack  
**Additional Electrical Options**

**CRI/CCT**

- 835- 80+CRI / 3500K Color Temp.
  - 840- 80+CRI / 4000K Color Temp.
  - 850- 80+CRI / 5000K Color Temp.
- \*Additional Color Temp. Available

**# OF LED ROW**

- 1- One LED Row

**VOLTAGE**

UNV- 120V-277V

**DRIVER INFO.**

**1DRDM**- 0-10V Dimming  
**Additional Driver Options**




**Los Angeles Lighting Mfg. Co. El Monte / California**


TEL: 626-454-8300 FAX: 626-454-8399 [www.lalighting.com](http://www.lalighting.com)

# RECESSED - LED

# 3-GDC320 SERIES 2X2 & 2X4

## SYSTEM DATA

Nominal Size	LED Lumen Package	CRI/CCT	Delivered Lumens	System Watts	Luminaire Efficacy	Fluorescent Equivalent	IES Files	Photometric Report
2x2	1K	840	1006 LM	9.2 W	109.3 LPW	1-F17T8	<a href="#">LA-T2460</a>	 Click Here
	2K	840	1906 LM	18.3 W	104.2 LPW	2-F17T8	<a href="#">LA-T2461</a>	
	3K *	835	2448 LM	26.09 W	94 LPW	3-F17T8	*	
		840	2613 LM	26.4 W	99 LPW	3-F17T8	*	
		850	2657 LM	26.8 W	99 LPW	3-F17T8	*	
	4K *	835	3434 LM	34.61 W	99 LPW	4-F17T8	*	
		840	3465 LM	35.2 W	99 LPW	4-F17T8	*	
		850	3485 LM	35.2 W	99 LPW	4-F17T8	*	

Nominal Size	LED Lumen Package	CRI/CCT	Delivered Lumens	System Watts	Luminaire Efficacy	Fluorescent Equivalent	IES Files	Photometric Report
2x4	2K	840	2031 LM	16.8 W	120.9 LPW	1-F32T8	<a href="#">LA-T2464</a>	 Click Here
	4K *	835	3423 LM	34.2 W	100 LPW	2-F32T8	*	
		840	3429 LM	34.3 W	100 LPW	2-F32T8	*	
		850	3440 LM	34.4 W	100 LPW	2-F32T8	*	
	6K *	835	4976 LM	49.94 W	100 LPW	3-F32T8	*	
		840	5020 LM	50.2 W	100 LPW	3-F32T8	*	
		850	5066 LM	50.6 W	100 LPW	3-F32T8	*	
	8K	840	7646 LM	66.4 W	115.2 LPW	4-F32T8	<a href="#">LA-T2467</a>	

*Note: System data above are based on 120V input voltage.*

*Actual performance may differ as a result of end-user environment and application.  
System data and specifications subject to change without notice.*



\* Information will be available soon.

## SPECIFICATIONS

- **TYPE** Direct recessed mounted LED luminaires for inverted T-bar ceilings.
- **CONSTRUCTION** 22 ga. cold rolled steel housing/reflector.
- **FINISH** High reflectance, low gloss matte white finish
- **OPTICS** Frosted micro linear prism acrylic lens, prism on inside of the lens.
- **LED SYSTEM** High efficiency drivers coupled with long-life LEDs, service life greater than 50,000 hours (L70).
- **WIRING** Universal voltage 120v thru 277v.
- **WARRANTY** 5-Year Limited Warranty.
- **LISTING** U. L. Listed. Suitable for damp locations. Compatible with UL Fire-Rated Ceiling Assemblies. DesignLights Consortium® (DLC) qualified product. Not all versions of this product may be DLC qualified. Please check the DLC Qualified Products List at [www.designlights.org/QPL](http://www.designlights.org/QPL) to confirm which versions are qualified.



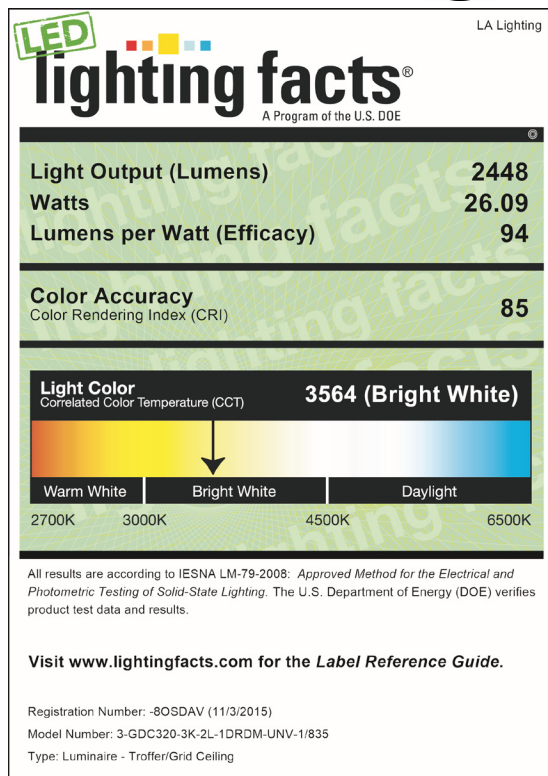
**Los Angeles Lighting Mfg. Co. El Monte / California**

TEL: 626-454-8300 FAX: 626-454-8399 [www.lalighting.com](http://www.lalighting.com)

## LED lighting facts

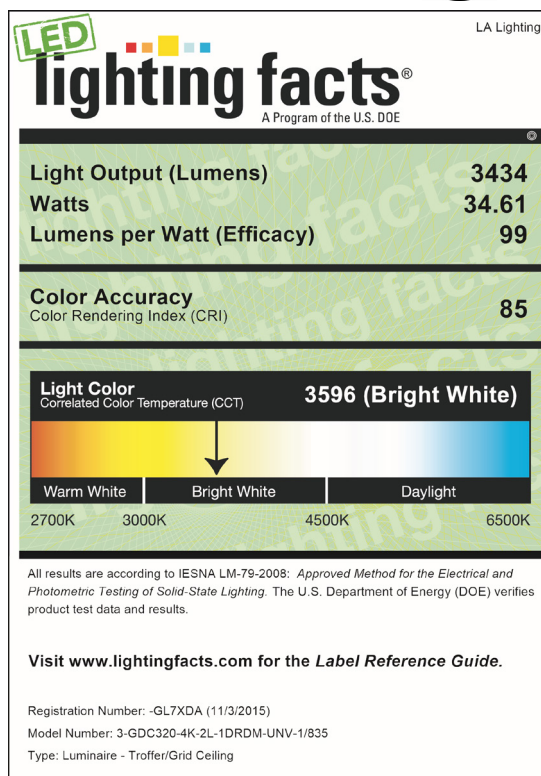
## 3-GDC320-3K-2L-1DRDM-UNV-1/835

- 3000 Lumen System
- L70 performance at 130,000 hours



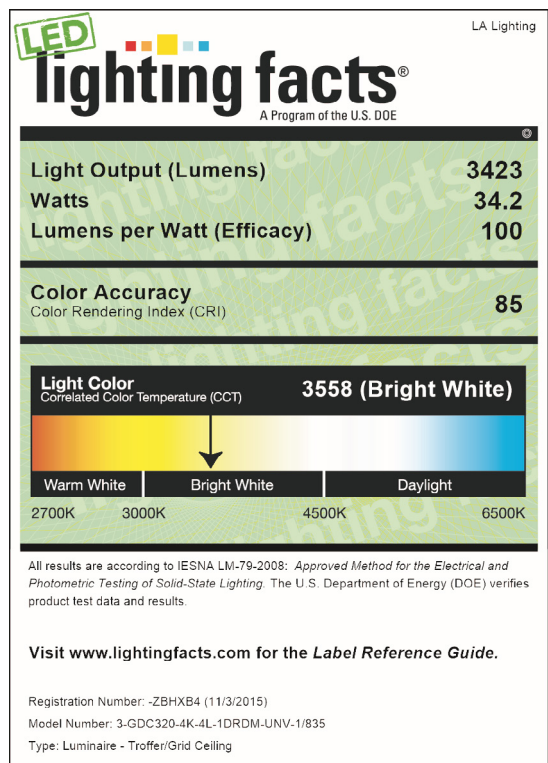
## 3-GDC320-4K-2L-1DRDM-UNV-1/835

- 4000 Lumen System
- L70 performance at 148,000 hours



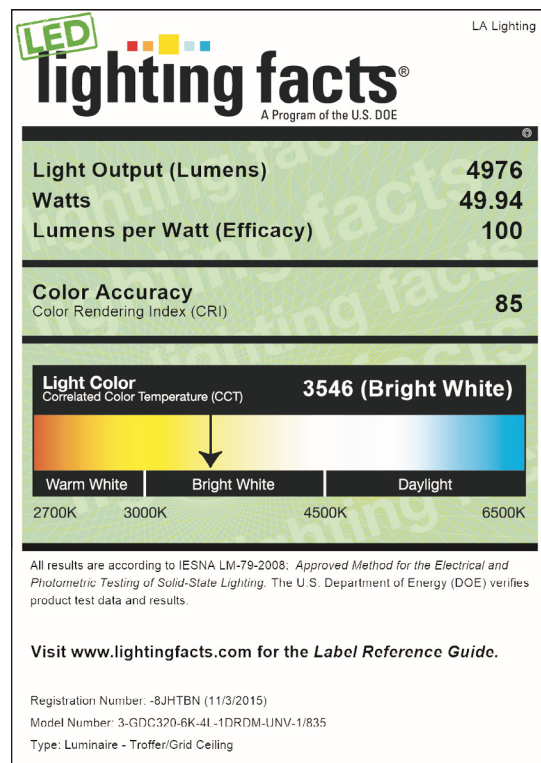
## 3-GDC320-4K-4L-1DRDM-UNV-1/835

- 4000 Lumen System
- L70 performance at 148,000 hours



## 3-GDC320-6K-4L-1DRDM-UNV-1/835

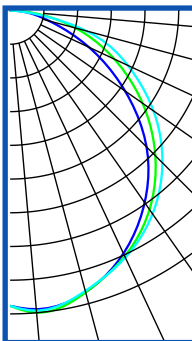
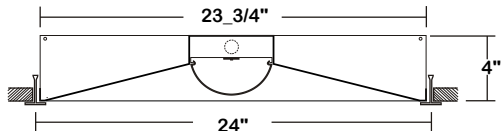
- 6000 Lumen System
- L70 performance at 128,000 hours



**PHOTOMETRIC DATA - 3-GDC320, 2X2**

**3-GDC320-1K-2L-1DR-UNV-1/840**

TEST NO.=LA-T2460  
 LED TYPE= 24 LED MODULE  
 NO. OF MODULE=1  
 SYSTEM WATT (W)=9.2  
 CRI ≥ 80  
 L70(Hrs.) ≥ 50,000  
 PHOTOMETRY TYPE=C



**CANDLEPOWER**

ANGLE	END	45	CROSS
0	338	338	338
5	342	343	345
15	332	332	334
25	304	311	312
35	267	277	284
45	219	234	245
55	161	185	200
65	100	131	148
75	46	78	90
85	15	21	12
90	1	0	0
95	0	0	0
105	0	0	0
115	0	0	0
125	0	0	0
135	0	0	0
145	0	0	0
155	0	0	0
165	0	0	0
175	0	0	0
180	0	0	0

**ZONAL LUMEN SUMMARY**

DEGREES	LUMENS	% LAMP	% FIXTURE
0-30	270	25.1	26.9
0-40	444	41.2	44.1
0-60	788	73.2	78.3
0-90	1006	93.4	100.0
90-120	0	0.0	0.0
90-150	0	0.0	0.0
90-180	0	0.0	0.0
0-180	1006	93.5	100.0

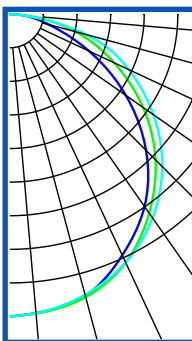
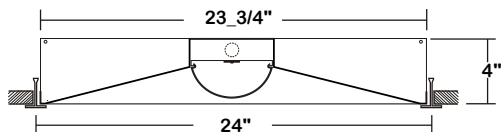
Luminaire Output= 1006 lumens  
 Luminaire Efficacy= 109.3 LPW

**SPACING CRITERION**

ALONG	ACROSS
1.25	1.31

**3-GDC320-2K-2L-1DR-UNV-1/840**

TEST NO.=LA-T2461  
 LED TYPE= 32 LED MODULE  
 NO. OF MODULE=1  
 SYSTEM WATT (W)=18.3  
 CRI ≥ 80  
 L70(Hrs.) ≥ 50,000  
 PHOTOMETRY TYPE=C



**CANDLEPOWER**

ANGLE	END	45	CROSS
0	652	652	652
5	647	648	647
15	629	632	626
25	574	591	590
35	506	524	536
45	415	444	465
55	305	350	378
65	188	248	283
75	87	147	171
85	28	40	23
90	2	1	0
95	0	0	0
105	0	0	0
115	0	0	0
125	0	0	0
135	0	0	0
145	0	0	0
155	0	0	0
165	0	0	0
175	0	0	0
180	0	0	0

**ZONAL LUMEN SUMMARY**

DEGREES	LUMENS	% LAMP	% FIXTURE
0-30	512	25.1	26.8
0-40	840	41.2	44.1
0-60	1493	73.2	78.3
0-90	1906	93.4	100.0
90-120	0	0.0	0.0
90-150	0	0.0	0.0
90-180	0	0.0	0.0
0-180	1906	93.5	100.0

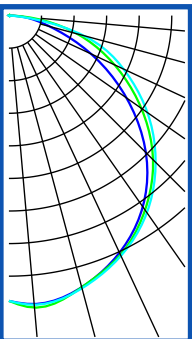
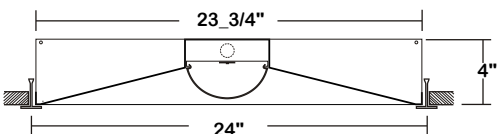
Luminaire Output= 1906 lumens  
 Luminaire Efficacy = 104.2 LPW

**SPACING CRITERION**

ALONG	ACROSS
1.23	1.29

**3-GDC320-2K-4L-1DR(PHI)-UNV-1S/840(SAM)**

TEST NO.=LA-2464  
 LED TYPE= 24 LED MODULE  
 NO. OF MODULE=2  
 SYSTEM WATT (W)=16.8  
 CRI ≥ 80  
 L70(Hrs.) ≥ 50,000  
 PHOTOMETRY TYPE=C



**CANDLEPOWER**

ANGLE	END	45	CROSS
0	665	665	665
5	674	683	676
15	655	655	658
25	609	615	617
35	544	553	560
45	451	475	483
55	334	377	394
65	211	272	295
75	99	165	180
85	31	46	23
90	2	0	0
95	0	0	0
105	0	0	0
115	0	0	0
125	0	0	0
135	0	0	0
145	0	0	0
155	0	0	0
165	0	0	0
175	0	0	0
180	0	0	0

**ZONAL LUMEN SUMMARY**

DEGREES	LUMENS	% LAMP	% FIXTURE
0-30	535	24.8	26.3
0-40	882	40.9	43.4
0-60	1579	73.3	77.7
0-90	2030	94.3	100.0
90-120	0	0.0	0.0
90-150	0	0.0	0.0
90-180	0	0.0	0.0
0-180	2031	94.3	100.0

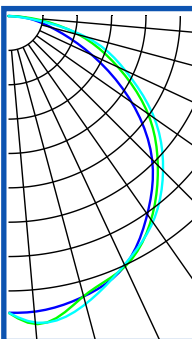
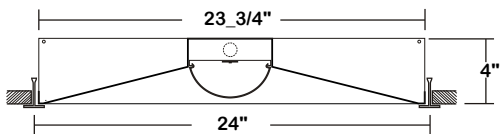
Luminaire Output= 120.9 lumens  
 Luminaire Efficacy = 120.9 LPW

**SPACING CRITERION**

ALONG	ACROSS
1.27	1.31

**3-GDC320-8K-4L-1DR(ULT)-UNV-1S/840(SAM)**

TEST NO.=LA-2467  
 LED TYPE= 72 LED MODULE  
 NO. OF MODULE=2  
 SYSTEM WATT (W)=66.4  
 CRI ≥ 80  
 L70(Hrs.) ≥ 50,000  
 PHOTOMETRY TYPE=C



**CANDLEPOWER**

ANGLE	END	45	CROSS
0	2495	2495	2495
5	2496	2600	2588
15	2442	2440	2507
25	2317	2322	2308
35	2035	2092	2116
45	1709	1776	1838
55	1265	1432	1498
65	774	1017	1083
75	375	621	669
85	124	173	87
90	7	3	2
95	0	0	0
105	0	0	0
115	0	0	0
125	0	0	0
135	0	0	0
145	0	0	0
155	0	0	0
165	0	0	0
175	0	0	0
180	0	0	0

**ZONAL LUMEN SUMMARY**

DEGREES	LUMENS	% LAMP	% FIXTURE
0-30	2014	24.8	26.3
0-40	3323	41.0	43.5
0-60	5960	73.5	78.0
0-90	7645	94.3	100.0
90-120	1	0.0	0.0
90-150	1	0.0	0.0
90-180	1	0.0	0.0
0-180	7646	94.3	100.0

Luminaire Output= 115.2 lumens  
 Luminaire Efficacy = 115.2 LPW

**SPACING CRITERION**

ALONG	ACROSS
1.29	1.31

