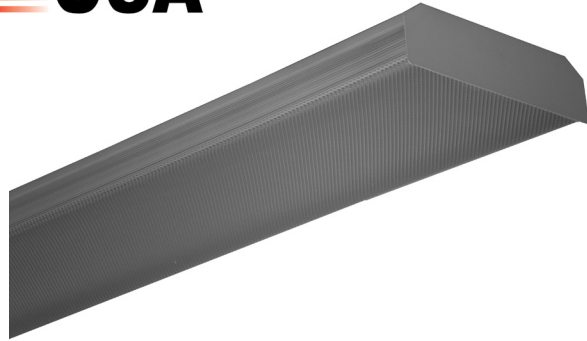




# WRAPAROUND - LED

Job Name \_\_\_\_\_ Type \_\_\_\_\_

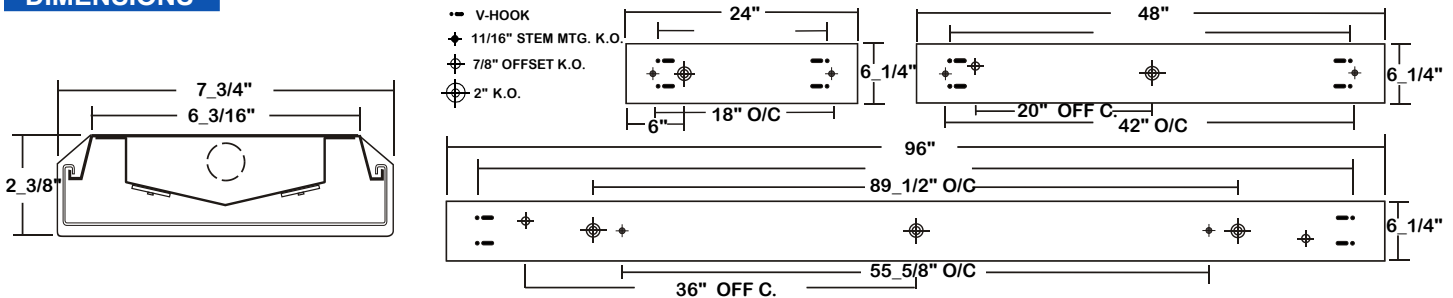


## 3-WAN107 SERIES

- 7\_3/4" Width / Wraparound LED Luminaire
- Frosted Prismatic Acrylic Lens with Linear Side Prisms
- Screwed-On End Plates Painted After Fabrication
- Stem, Cable or Chain Mountable
- Row Mountable
- Suitable for Damp Locations
- High efficiency drivers coupled with long-life LEDs, service life up to 203,000 hours (L70)
- Available with:
  - Cord and Plug
  - Emergency Battery Pack
  - Motion Sensor



### DIMENSIONS



### ORDERING GUIDE

Example: **3-WAN107** - **4K** - **4L** - **FPA** - **BPL** - **1DRDM** - **UNV** - **2** / **840**

**3-WAN107** - [ ] - [ ] - **FPA** - [ ] - [ ] - **UNV** - **2** / [ ]

#### SERIES

#### LED SYSTEM LUMEN

- 2'**
    - 2K-Nominal 2000 Lumens LED System
    - 3K-Nominal 3000 Lumens LED System
    - 4K-Nominal 4000 Lumens LED System
  - 4'**
    - 2K-Nominal 2000 Lumens LED System
    - 4K-Nominal 4000 Lumens LED System
    - 6K-Nominal 6000 Lumens LED System
    - 8K-Nominal 8000 Lumens LED System
  - 8'**
    - 4K-Nominal 4000 Lumens LED System
    - 8K-Nominal 8000 Lumens LED System
    - 12K-Nominal 12000 Lumens LED System
    - 16K-Nominal 16000 Lumens LED System
- \*Additional Luman Packages Available

#### OPTICAL OPTION

FPA- Frosted Prismatic Acrylic

#### LENGTH

- 2L- Nominal 2'
- 4L- Nominal 4'
- 8L- Nominal 8'

#### CRI/CCT

- 835- 80+CRI / 3500K Color Temp.
  - 840- 80+CRI / 4000K Color Temp.
  - 850- 80+CRI / 5000K Color Temp.
- \*Additional Color Temp. Available

#### # OF LED ROW

2- Two LED Rows

#### VOLTAGE

UNV- 120V-277V

#### DRIVER INFO.

- 1DRDM- 0-10V Dimming for 2,3,4,6,8,12K Lumen System
  - 2DRDM- 0-10V Dimming for 16K Lumen System
- Additional Driver Options**

#### ELECTRICAL OPTION

- BPL- Emergency Battery Pack
  - MS- Motion Sensor
- Additional Motion Sensor Options**  
**Additional Electrical Options**



Los Angeles Lighting Mfg. Co. El Monte / California


TEL: 626-454-8300 FAX: 626-454-8399 [www.lalighting.com](http://www.lalighting.com)


# WRAPAROUND - LED

# 3-WAN107 SERIES

## SYSTEM DATA

| Nominal Size | LED Lumen Package | Optical Option | CRI/ CCT | Delivered Lumens | System Watts | Luminaire Efficacy | Fluorescent Equivalent | IES Files                | Photometric Report  |
|--------------|-------------------|----------------|----------|------------------|--------------|--------------------|------------------------|--------------------------|---|
| 2'           | 2K                | FPA            | 840      | 1928 LM          | 17.80 W      | 108.3 LPW          | 2-F17T8                | <a href="#">LA-T2559</a> | <br><a href="#">Click Here</a> |
|              | 3K                | FPA            |          | 2739 LM          | 26.50 W      | 103.4 LPW          | 3-F17T8                | <a href="#">LA-T2560</a> |   |
|              | 4K                | FPA            |          | 3651 LM          | 34.70 W      | 105.2 LPW          | 4-F17T8                | <a href="#">LA-T2561</a> |   |

| Nominal Size | LED Lumen Package | Optical Option | CRI/ CCT | Delivered Lumens | System Watts | Luminaire Efficacy | Fluorescent Equivalent   | IES Files                | Photometric Report  |
|--------------|-------------------|----------------|----------|------------------|--------------|--------------------|--------------------------|--------------------------|---|
| 4'           | 2K                | FPA            | 840      | *                | *            | *                  | *                        | *                        | <br><a href="#">Click Here</a> |
|              | 4K *              | FPA            | 835      | 3371 LM          | 33 W         | 102.2 LPW          | 2-F32T8                  | <a href="#">LA-T2788</a> |   |
|              |                   | FPA            | 840      | 3359 LM          | 33.06 W      | 101.6 LPW          | 2-F32T8                  | <a href="#">LA-T2562</a> |   |
|              |                   | FPA            | 850      | 3556 LM          | 33.53 W      | 106.1 LPW          | 2-F32T8                  | <a href="#">LA-T2787</a> |   |
|              | 6K                | FPA            | 835      | 5449 LM          | 52.30 W      | 104.2 LPW          | 3-F32T8                  | <a href="#">LA-T2563</a> |   |
|              | 8K *              | FPA            | 835      | 5993 LM          | 66.49 W      | 90.13 LPW          | 4-F32T8                  | <a href="#">LA-T2790</a> |   |
|              |                   | FPA            | 840      | 6293 LM          | 66.14 W      | 95.15 LPW          | 4-F32T8                  | <a href="#">LA-T2564</a> |   |
|              | FPA               | 850            | 6650 LM  | 67.32 W          | 98.78 LPW    | 4-F32T8            | <a href="#">LA-T2789</a> |                          |   |

| Nominal Size | LED Lumen Package | Optical Option | CRI/ CCT | Delivered Lumens | System Watts | Luminaire Efficacy | Fluorescent Equivalent | IES Files                | Photometric Report   |
|--------------|-------------------|----------------|----------|------------------|--------------|--------------------|------------------------|--------------------------|--|
| 8'           | 4K                | FPA            | 840      | *                | *            | *                  | *                      | *                        | <br><a href="#">Click Here</a> |
|              | 8K                | FPA            |          | 7755 LM          | 64.80 W      | 119.7 LPW          | 4-F32T8                | <a href="#">LA-T2565</a> |  |
|              | 12K               | FPA            |          | 10811 LM         | 89.70 W      | 120.5 LPW          | 6-F32T8                | <a href="#">LA-T2569</a> |  |
|              | 16K               | FPA            |          | 14689 LM         | 136.2 W      | 107.8 LPW          | 8-F32T8                | <a href="#">LA-T2566</a> |  |

**Note:**

System data above are based on 120V input voltage.  
Actual performance may differ as a result of end-user environment and application.  
Specifications subject to change without notice



\* Information will be available soon.

## ACCESSORIES [Order as separate catalog number.](#)

### Fixture Suspension System

• [See appropriate reference page.](#)

V6  
• 6" Leg Height V-Hook.



## SPECIFICATIONS

- **TYPE** 7.3/4" wide surface mounted shallow wrap around LED luminaire.
- **CONSTRUCTION** 22 ga. cold rolled steel housing. (20 ga. housing available as specified).
- **FINISH** Baked white polyester finish, minimum reflectance 86%. Powder coated finish end plate.
- **OPTICS** Frosted prismatic acrylic lens with linear side prisms, two 4' lenses per 8' fixture.  
DR acrylic formulation for added durability.
- **LED SYSTEM** High efficiency drivers coupled with long-life LEDs, service life greater than 50,000 hours (L70).
- **WIRING** Universal voltage 120v thru 277v.
- **WARRANTY** 5-Year Limited Warranty.
- **LISTING** U. L. Listed. Suitable for damp locations.  
DesignLights Consortium® (DLC) qualified product. Not all versions of this product may be DLC qualified.  
Please check the DLC Qualified Products List at [www.designlights.org/QPL](http://www.designlights.org/QPL) to confirm which versions are qualified.



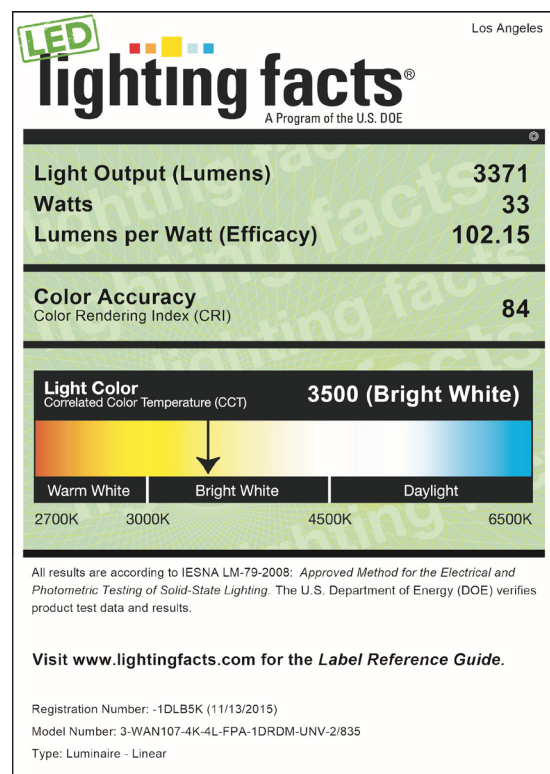
**Los Angeles Lighting Mfg. Co. El Monte / California**

TEL: 626-454-8300 FAX: 626-454-8399 [www.lalighting.com](http://www.lalighting.com)

## LED lighting facts

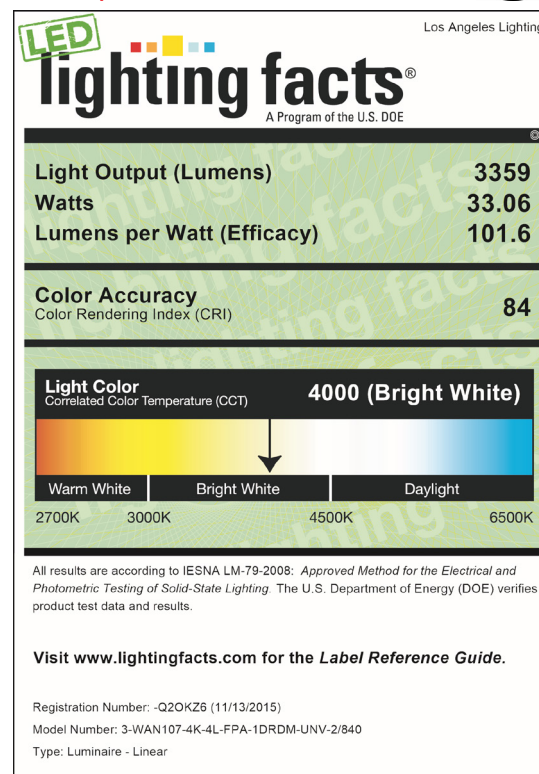
## 3-WAN107-4K-4L-FPA-1DRDM-UNV-2/835

- 4000 Lumens System
- L70 performance at 203,000 hours



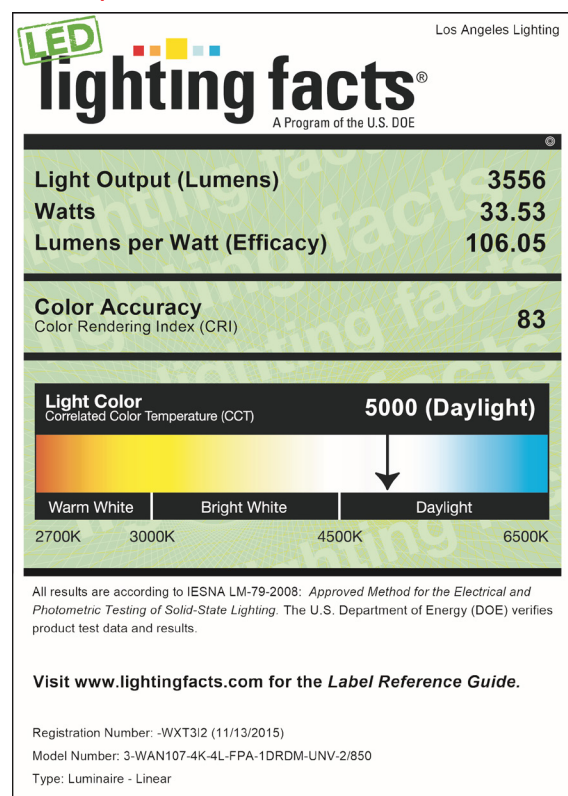
## 3-WAN107-4K-4L-FPA-1DRDM-UNV-2/840

- 4000 Lumens System
- L70 performance at 203,000 hours



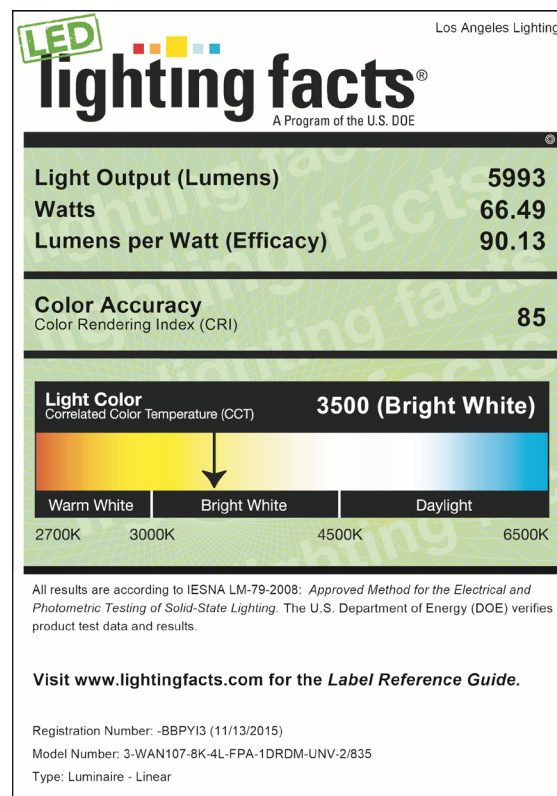
## 3-WAN107-4K-4L-FPA-1DRDM-UNV-2/850

- 4000 Lumens System
- L70 performance at 203,000 hours



## 3-WAN107-8K-4L-FPA-1DRDM-UNV-2/835

- 8000 Lumens System
- L70 performance at 179,000 hours



## LED lighting facts

### 3-WAN107-8K-4L-FPA-1DRDM-UNV-2/840

- 8000 Lumens System
- L70 performance at 179,000 hours



Los Angeles Lighting

**LED lighting facts**  
A Program of the U.S. DDE

|                            |              |
|----------------------------|--------------|
| Light Output (Lumens)      | <b>6293</b>  |
| Watts                      | <b>66.14</b> |
| Lumens per Watt (Efficacy) | <b>95.15</b> |

---

**Color Accuracy**  
Color Rendering Index (CRI) **84**

---

**Light Color**  
Correlated Color Temperature (CCT) **4000 (Bright White)**

2700K    3000K    4500K    6500K

All results are according to IESNA LM-79-2008: *Approved Method for the Electrical and Photometric Testing of Solid-State Lighting*. The U.S. Department of Energy (DOE) verifies product test data and results.

Visit [www.lightingfacts.com](http://www.lightingfacts.com) for the *Label Reference Guide*.

Registration Number: -M6WFD1 (11/13/2015)  
Model Number: 3-WAN107-8K-4L-FPA-1DRDM-UNV-2/840  
Type: Luminaire - Linear

### 3-WAN107-8K-4L-FPA-1DRDM-UNV-2/850

- 8000 Lumens System
- L70 performance at 179,000 hours



Los Angeles Lighting

**LED lighting facts**  
A Program of the U.S. DDE

|                            |              |
|----------------------------|--------------|
| Light Output (Lumens)      | <b>6650</b>  |
| Watts                      | <b>67.32</b> |
| Lumens per Watt (Efficacy) | <b>98.78</b> |

---

**Color Accuracy**  
Color Rendering Index (CRI) **83**

---

**Light Color**  
Correlated Color Temperature (CCT) **5000 (Daylight)**

2700K    3000K    4500K    6500K

All results are according to IESNA LM-79-2008: *Approved Method for the Electrical and Photometric Testing of Solid-State Lighting*. The U.S. Department of Energy (DOE) verifies product test data and results.

Visit [www.lightingfacts.com](http://www.lightingfacts.com) for the *Label Reference Guide*.

Registration Number: -4JPZNP (11/13/2015)  
Model Number: 3-WAN107-8K-4L-FPA-1DRDM-UNV-2/850 LED MODEL  
Type: Luminaire - Linear

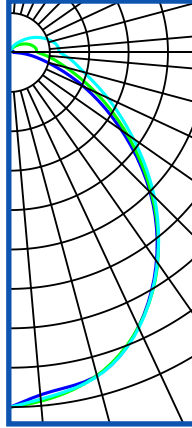
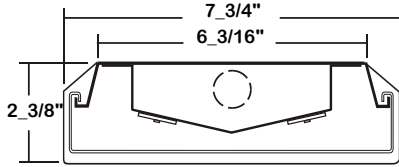
This Space is intentionally left blank.



**PHOTOMETRIC DATA - 3-WAN107 SERIES**

**3-WAN107-2K-2L-FPA-1DRDM(ULT)-UNV-2S/840(SAM)**

TEST NO.=LA-T2559  
 LED TYPE= 24 LED MODULE  
 NO. OF MODULE=2  
 SYSTEM WATT (W)=17.8  
 CRI ≥ 80  
 L70(Hrs.) ≥ 50,000  
 PHOTOMETRY TYPE=C



| CANDLEPOWER |     |     |       |
|-------------|-----|-----|-------|
| ANGLE       | END | 45  | CROSS |
| 0           | 681 | 681 | 681   |
| 5           | 660 | 672 | 668   |
| 15          | 642 | 642 | 644   |
| 25          | 582 | 582 | 583   |
| 35          | 489 | 493 | 492   |
| 45          | 379 | 383 | 390   |
| 55          | 261 | 273 | 288   |
| 65          | 156 | 180 | 206   |
| 75          | 74  | 111 | 146   |
| 85          | 26  | 69  | 111   |
| 90          | 8   | 53  | 95    |
| 95          | 6   | 50  | 93    |
| 105         | 6   | 46  | 83    |
| 115         | 6   | 38  | 67    |
| 125         | 5   | 28  | 49    |
| 135         | 5   | 20  | 33    |
| 145         | 4   | 14  | 22    |
| 155         | 3   | 9   | 14    |
| 165         | 3   | 6   | 7     |
| 175         | 3   | 4   | 4     |
| 180         | 3   | 3   | 3     |

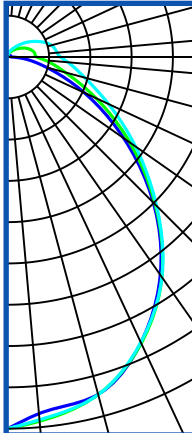
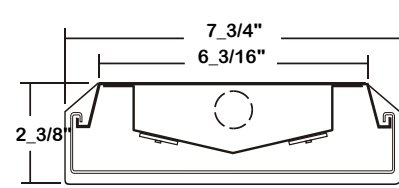
| ZONAL LUMEN SUMMARY |        |        |           |
|---------------------|--------|--------|-----------|
| DEGREES             | LUMENS | % LAMP | % FIXTURE |
| 0-30                | 515    | 23.9   | 26.7      |
| 0-40                | 824    | 38.3   | 42.8      |
| 0-60                | 1367   | 63.5   | 70.9      |
| 0-90                | 1734   | 80.5   | 89.9      |
| 90-120              | 139    | 6.5    | 7.2       |
| 90-150              | 188    | 8.7    | 9.7       |
| 90-180              | 194    | 9.0    | 10.1      |
| 0-180               | 1928   | 89.5   | 100.0     |

Luminaire Output= 1928 lumens  
 Luminaire Efficacy = 108.3 LPW

| SPACING CRITERION |        |
|-------------------|--------|
| ALONG             | ACROSS |
| 1.17              | 1.18   |

**3-WAN107-3K-2L-FPA-1DRDM(ULT)-UNV-2S/840(SAM)**

TEST NO.=LA-T2560  
 LED TYPE= 24 LED MODULE  
 NO. OF MODULE=2  
 SYSTEM WATT (W)=26.5  
 CRI ≥ 80  
 L70(Hrs.) ≥ 50,000  
 PHOTOMETRY TYPE=C



| CANDLEPOWER |     |     |       |
|-------------|-----|-----|-------|
| ANGLE       | END | 45  | CROSS |
| 0           | 971 | 971 | 971   |
| 5           | 935 | 955 | 952   |
| 15          | 913 | 913 | 914   |
| 25          | 824 | 826 | 823   |
| 35          | 695 | 702 | 703   |
| 45          | 538 | 545 | 550   |
| 55          | 370 | 390 | 408   |
| 65          | 221 | 255 | 291   |
| 75          | 106 | 156 | 208   |
| 85          | 37  | 99  | 158   |
| 90          | 11  | 75  | 138   |
| 95          | 8   | 72  | 129   |
| 105         | 8   | 66  | 118   |
| 115         | 8   | 54  | 95    |
| 125         | 7   | 40  | 69    |
| 135         | 7   | 29  | 48    |
| 145         | 6   | 20  | 30    |
| 155         | 5   | 13  | 20    |
| 165         | 5   | 8   | 1152  |
| 175         | 5   | 5   | 6     |
| 180         | 4   | 4   | 4     |

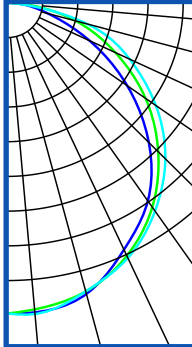
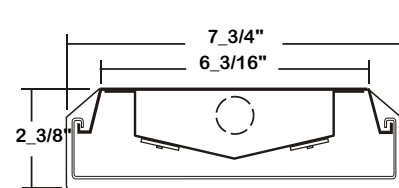
| ZONAL LUMEN SUMMARY |        |        |           |
|---------------------|--------|--------|-----------|
| DEGREES             | LUMENS | % LAMP | % FIXTURE |
| 0-30                | 731    | 23.9   | 26.7      |
| 0-40                | 1172   | 38.3   | 42.8      |
| 0-60                | 1943   | 63.5   | 70.9      |
| 0-90                | 2463   | 80.5   | 89.9      |
| 90-120              | 198    | 6.5    | 7.2       |
| 90-150              | 267    | 8.7    | 9.7       |
| 90-180              | 276    | 9.0    | 10.1      |
| 0-180               | 2739   | 89.5   | 100.0     |

Luminaire Output= 2739 lumens  
 Luminaire Efficacy = 103.4 LPW

| SPACING CRITERION |        |
|-------------------|--------|
| ALONG             | ACROSS |
| 1.17              | 1.17   |

**3-WAN107-4K-2L-FPA-1DRDM(ULT)-UNV-2S/840(SAM)**

TEST NO.=LA-T2561  
 LED TYPE= 32 LED MODULE  
 NO. OF MODULE=2  
 SYSTEM WATT (W)=35.3  
 CRI ≥ 80  
 L70(Hrs.) ≥ 50,000  
 PHOTOMETRY TYPE=C



| CANDLEPOWER |      |      |       |
|-------------|------|------|-------|
| ANGLE       | END  | 45   | CROSS |
| 0           | 1283 | 1283 | 1283  |
| 5           | 1283 | 1273 | 1263  |
| 15          | 1209 | 1210 | 1214  |
| 25          | 1102 | 1100 | 1100  |
| 35          | 932  | 933  | 936   |
| 45          | 716  | 728  | 733   |
| 55          | 493  | 518  | 544   |
| 65          | 295  | 342  | 392   |
| 75          | 142  | 209  | 2751  |
| 85          | 51   | 132  | 212   |
| 90          | 15   | 101  | 178   |
| 95          | 11   | 95   | 176   |
| 105         | 11   | 87   | 157   |
| 115         | 11   | 7    | 128   |
| 125         | 10   | 54   | 93    |
| 135         | 9    | 37   | 63    |
| 145         | 8    | 26   | 41    |
| 155         | 7    | 18   | 26    |
| 165         | 6    | 7    | 14    |
| 175         | 6    | 7    | 7     |
| 180         | 7    | 7    | 7     |

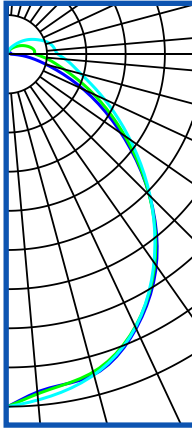
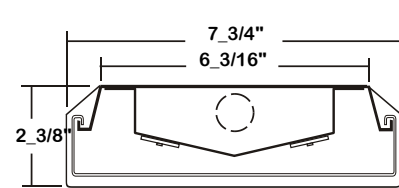
| ZONAL LUMEN SUMMARY |        |        |           |
|---------------------|--------|--------|-----------|
| DEGREES             | LUMENS | % LAMP | % FIXTURE |
| 0-30                | 974    | 23.9   | 26.7      |
| 0-40                | 1560   | 38.2   | 42.7      |
| 0-60                | 2588   | 63.4   | 70.9      |
| 0-90                | 3284   | 80.5   | 89.9      |
| 90-120              | 264    | 6.5    | 7.2       |
| 90-150              | 355    | 8.7    | 9.7       |
| 90-180              | 367    | 9.0    | 10.1      |
| 0-180               | 3651   | 89.5   | 100.0     |

Luminaire Output= 3651 lumens  
 Luminaire Efficacy = 105.2 LPW

| SPACING CRITERION |        |
|-------------------|--------|
| ALONG             | ACROSS |
| 1.18              | 1.18   |

**3-WAN107-4K-4L-FPA-1DRDM-UNV-2/835**

TEST NO.=LA-T2788  
 LED TYPE= 24 LED MODULE  
 NO. OF MODULE=4  
 SYSTEM WATT (W)=33  
 CRI ≥ 80  
 L70(Hrs.) = 203,000  
 PHOTOMETRY TYPE=C



| CANDLEPOWER |      |      |       |
|-------------|------|------|-------|
| ANGLE       | END  | 45   | CROSS |
| 0           | 1175 | 1175 | 1175  |
| 5           | 1160 | 1167 | 1171  |
| 15          | 1106 | 1113 | 1119  |
| 25          | 1003 | 1011 | 1016  |
| 35          | 857  | 867  | 874   |
| 45          | 694  | 706  | 796   |
| 55          | 522  | 539  | 556   |
| 65          | 355  | 385  | 409   |
| 75          | 203  | 309  | 278   |
| 85          | 66   | 170  | 151   |
| 90          | 1    | 51   | 89    |
| 95          | 1    | 49   | 86    |
| 105         | 1    | 100  | 80    |
| 115         | 3    | 44   | 72    |
| 125         | 2    | 38   | 61    |
| 135         | 4    | 30   | 49    |
| 145         | 4    | 21   | 34    |
| 155         | 5    | 15   | 20    |
| 165         | 6    | 11   | 13    |
| 175         | 7    | 7    | 1     |
| 180         | 6    | 6    | 6     |

| ZONAL LUMEN SUMMARY |        |           |
|---------------------|--------|-----------|
| DEGREES             | LUMENS | % FIXTURE |
| 0-30                | 889    | 26.0      |
| 0-40                | 1431   | 41.8      |
| 0-60                | 2457   | 71.8      |
| 0-90                | 3211   | 93.9      |
| 0-180               | 3421   | 100.0     |

Luminaire Output= 3371 lumens  
 Luminaire Efficacy = 102.2 LPW

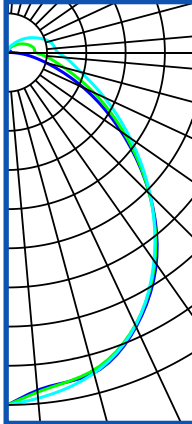
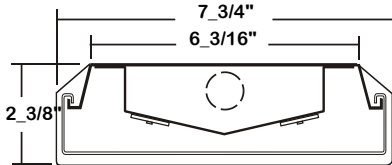
| SPACING CRITERION |        |
|-------------------|--------|
| ALONG             | ACROSS |
| -                 | -      |



**PHOTOMETRIC DATA - 3-WAN107 SERIES**

**3-WAN107-4K-4L-FPA-1DRDM-UNV-2/840**

TEST NO.=LA-T2562  
 LED TYPE= 24 LED MODULE  
 NO. OF MODULE=4  
 SYSTEM WATT (W)=33.06  
 CRI ≥ 80  
 L70(Hrs.) = 203,000  
 PHOTOMETRY TYPE=C



| CANDLEPOWER |      |      |       |
|-------------|------|------|-------|
| ANGLE       | END  | 45   | CROSS |
| 0           | 1158 | 1158 | 1158  |
| 5           | 1151 | 1146 | 1149  |
| 15          | 1106 | 1108 | 1113  |
| 25          | 1011 | 1010 | 1005  |
| 35          | 858  | 855  | 852   |
| 45          | 663  | 670  | 673   |
| 55          | 463  | 479  | 496   |
| 65          | 278  | 316  | 355   |
| 75          | 133  | 193  | 253   |
| 85          | 48   | 121  | 192   |
| 90          | 14   | 95   | 166   |
| 95          | 11   | 89   | 159   |
| 105         | 11   | 81   | 143   |
| 115         | 10   | 67   | 115   |
| 125         | 9    | 50   | 85    |
| 135         | 8    | 36   | 58    |
| 145         | 7    | 24   | 38    |
| 155         | 6    | 16   | 23    |
| 165         | 5    | 10   | 13    |
| 175         | 5    | 6    | 6     |
| 180         | 5    | 5    | 5     |

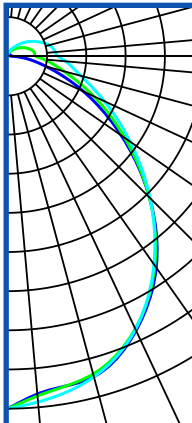
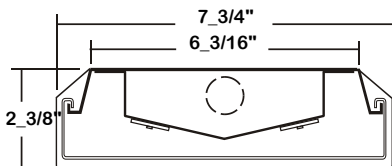
| ZONAL LUMEN SUMMARY |        |        |           |
|---------------------|--------|--------|-----------|
| DEGREES             | LUMENS | % LAMP | % FIXTURE |
| 0-30                | 890    | 23.8   | 26.5      |
| 0-40                | 1428   | 38.2   | 42.5      |
| 0-60                | 2376   | 63.6   | 70.7      |
| 0-90                | 3018   | 80.7   | 89.8      |
| 90-120              | 244    | 6.5    | 7.2       |
| 90-150              | 329    | 8.8    | 9.8       |
| 90-180              | 339    | 9.1    | 10.1      |
| 0-180               | 3358   | 89.8   | 100.0     |

Luminaire Output= 3359 lumens  
 Luminaire Efficacy = 101.6 LPW

| SPACING CRITERION |        |
|-------------------|--------|
| ALONG             | ACROSS |
| 1.19              | 1.19   |

**3-WAN107-4K-4L-FPA-1DRDM-UNV-2/850**

TEST NO.=LA-T2587  
 LED TYPE= 24 LED MODULE  
 NO. OF MODULE=4  
 SYSTEM WATT (W)=33.53  
 CRI ≥ 80  
 L70(Hrs.) = 203,000  
 PHOTOMETRY TYPE=C



| CANDLEPOWER |      |      |       |
|-------------|------|------|-------|
| ANGLE       | END  | 45   | CROSS |
| 0           | 1255 | 1255 | 1255  |
| 5           | 1241 | 1218 | 1223  |
| 15          | 1176 | 1169 | 1169  |
| 25          | 1069 | 1062 | 1065  |
| 35          | 907  | 905  | 900   |
| 45          | 707  | 709  | 711   |
| 55          | 489  | 508  | 526   |
| 65          | 294  | 337  | 376   |
| 75          | 140  | 205  | 268   |
| 85          | 50   | 130  | 203   |
| 90          | 14   | 100  | 173   |
| 95          | 12   | 95   | 168   |
| 105         | 11   | 87   | 152   |
| 115         | 11   | 71   | 124   |
| 125         | 9    | 52   | 90    |
| 135         | 9    | 37   | 61    |
| 145         | 7    | 26   | 40    |
| 155         | 7    | 17   | 24    |
| 165         | 5    | 10   | 14    |
| 175         | 5    | 7    | 8     |
| 180         | 4    | 4    | 4     |

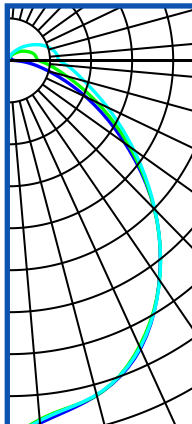
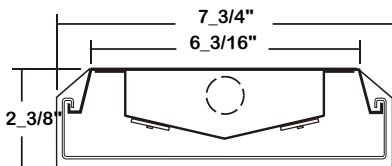
| ZONAL LUMEN SUMMARY |        |        |           |
|---------------------|--------|--------|-----------|
| DEGREES             | LUMENS | % LAMP | % FIXTURE |
| 0-30                | 941    | 23.8   | 26.4      |
| 0-40                | 1509   | 38.1   | 42.4      |
| 0-60                | 2514   | 63.5   | 70.7      |
| 0-90                | 3195   | 80.7   | 89.8      |
| 90-120              | 259    | 6.5    | 7.2       |
| 90-150              | 348    | 8.8    | 9.8       |
| 90-180              | 359    | 9.0    | 10.1      |
| 0-180               | 3554   | 89.8   | 100.0     |

Luminaire Output= 3556 lumens  
 Luminaire Efficacy = 106.1 LPW

| SPACING CRITERION |        |
|-------------------|--------|
| ALONG             | ACROSS |
| 1.17              | 1.17   |

**3-WAN107-6K-4L-FPA-1DRDM(ULT)-UNV-2PS/840(SAM)**

TEST NO.=LA-T2563  
 LED TYPE= 24 LED MODULE  
 NO. OF MODULE=4  
 SYSTEM WATT (W)=52.3  
 CRI ≥ 80  
 L70(Hrs.) ≥ 50,000  
 PHOTOMETRY TYPE=C



| CANDLEPOWER |      |      |       |
|-------------|------|------|-------|
| ANGLE       | END  | 45   | CROSS |
| 0           | 1951 | 1951 | 1951  |
| 5           | 1880 | 1861 | 1868  |
| 15          | 1791 | 1790 | 1787  |
| 25          | 1643 | 1629 | 1637  |
| 35          | 1384 | 1386 | 1387  |
| 45          | 1086 | 1086 | 1090  |
| 55          | 749  | 779  | 804   |
| 65          | 451  | 513  | 574   |
| 75          | 219  | 316  | 411   |
| 85          | 76   | 199  | 309   |
| 90          | 22   | 156  | 266   |
| 95          | 18   | 146  | 257   |
| 105         | 17   | 134  | 231   |
| 115         | 16   | 108  | 188   |
| 125         | 15   | 82   | 138   |
| 135         | 13   | 58   | 95    |
| 145         | 13   | 39   | 61    |
| 155         | 11   | 26   | 39    |
| 165         | 8    | 15   | 21    |
| 175         | 9    | 10   | 13    |
| 180         | 7    | 7    | 7     |

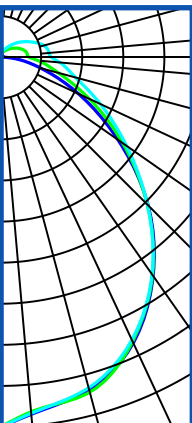
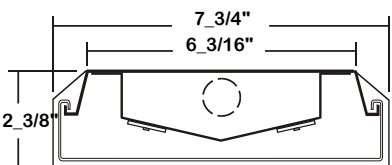
| ZONAL LUMEN SUMMARY |        |        |           |
|---------------------|--------|--------|-----------|
| DEGREES             | LUMENS | % LAMP | % FIXTURE |
| 0-30                | 1443   | 23.8   | 26.5      |
| 0-40                | 2313   | 38.1   | 42.5      |
| 0-60                | 3853   | 63.5   | 70.7      |
| 0-90                | 4897   | 80.8   | 89.9      |
| 90-120              | 397    | 6.5    | 7.3       |
| 90-150              | 535    | 8.8    | 9.8       |
| 90-180              | 552    | 9.1    | 10.1      |
| 0-180               | 5449   | 89.9   | 100.0     |

Luminaire Output= 5449 lumens  
 Luminaire Efficacy = 104.2 LPW

| SPACING CRITERION |        |
|-------------------|--------|
| ALONG             | ACROSS |
| 1.15              | 1.15   |

**3-WAN107-8K-4L-FPA-1DRDM-UNV-2/835**

TEST NO.=LA-T2790  
 LED TYPE= 32 LED MODULE  
 NO. OF MODULE=4  
 SYSTEM WATT (W)=66.49  
 CR ≥ 80  
 L70(Hrs.) = 179,000  
 PHOTOMETRY TYPE=C



| CANDLEPOWER |      |      |       |
|-------------|------|------|-------|
| ANGLE       | END  | 45   | CROSS |
| 0           | 2048 | 2048 | 2048  |
| 5           | 2023 | 2035 | 2041  |
| 15          | 1928 | 1939 | 1949  |
| 25          | 1746 | 1760 | 1774  |
| 35          | 1500 | 1514 | 1532  |
| 45          | 1210 | 1234 | 1255  |
| 55          | 911  | 944  | 977   |
| 65          | 626  | 671  | 715   |
| 75          | 363  | 413  | 479   |
| 85          | 114  | 175  | 252   |
| 90          | 4    | 83   | 142   |
| 95          | 3    | 82   | 138   |
| 105         | 3    | 80   | 133   |
| 115         | 3    | 74   | 121   |
| 125         | 6    | 64   | 105   |
| 135         | 6    | 52   | 85    |
| 145         | 8    | 36   | 61    |
| 155         | 10   | 27   | 37    |
| 165         | 11   | 18   | 23    |
| 175         | 12   | 12   | 12    |
| 180         | 11   | 11   | 11    |

| ZONAL LUMEN SUMMARY |        |           |
|---------------------|--------|-----------|
| DEGREES             | LUMENS | % FIXTURE |
| 0-30                | 1551   | 26.0      |
| 0-40                | 2498   | 41.9      |
| 0-60                | 4298   | 72.0      |
| 0-90                | 5612   | 94.1      |
| 90-180              | 354    | 5.9       |
| 0-180               | 5993   | 100.0     |

Luminaire Output= 5993 lumens  
 Luminaire Efficacy = 90.13 LPW

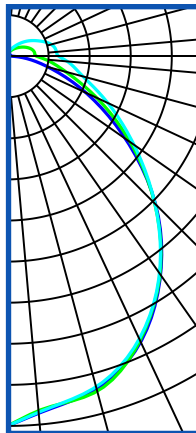
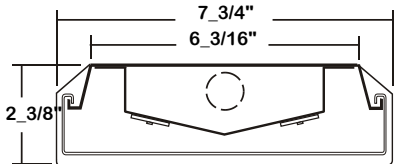
| SPACING CRITERION |        |
|-------------------|--------|
| ALONG             | ACROSS |
| -                 | -      |



**PHOTOMETRIC DATA - 3-WAN107 SERIES**

**3-WAN107-8K-4L-FPA-1DRDM-UNV-2/840**

TEST NO.=LA-T2564  
 LED TYPE= 32 LED MODULE  
 NO. OF MODULE=4  
 SYSTEM WATT (W)=66.14  
 CRI ≥ 80  
 L70(Hrs.) = 179,000  
 PHOTOMETRY TYPE=C



**CANDLEPOWER**

| ANGLE | END  | 45   | CROSS |
|-------|------|------|-------|
| 0     | 2153 | 2153 | 2153  |
| 5     | 2142 | 2155 | 2152  |
| 15    | 2072 | 2069 | 2057  |
| 25    | 1895 | 1885 | 1889  |
| 35    | 1606 | 1606 | 1587  |
| 45    | 1251 | 1255 | 1268  |
| 55    | 863  | 899  | 922   |
| 65    | 520  | 595  | 666   |
| 75    | 251  | 365  | 475   |
| 85    | 91   | 229  | 362   |
| 90    | 26   | 175  | 311   |
| 95    | 19   | 169  | 296   |
| 105   | 19   | 153  | 265   |
| 115   | 18   | 126  | 219   |
| 125   | 18   | 92   | 159   |
| 135   | 14   | 67   | 110   |
| 145   | 14   | 45   | 69    |
| 155   | 12   | 30   | 45    |
| 165   | 10   | 19   | 25    |
| 175   | 9    | 12   | 12    |
| 180   | 7    | 7    | 7     |

**ZONAL LUMEN SUMMARY**

| DEGREES | LUMENS | % LAMP | % FIXTURE |
|---------|--------|--------|-----------|
| 0-30    | 1665   | 23.7   | 26.4      |
| 0-40    | 2671   | 38.1   | 42.4      |
| 0-60    | 4448   | 63.5   | 70.6      |
| 0-90    | 5656   | 80.8   | 89.8      |
| 90-120  | 458    | 6.5    | 7.2       |
| 90-150  | 617    | 8.8    | 9.8       |
| 90-180  | 636    | 9.0    | 10.1      |
| 0-180   | 6293   | 89.8   |           |

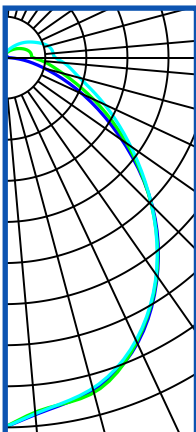
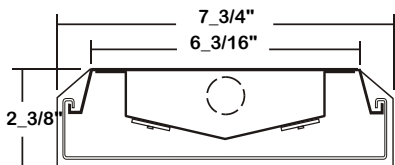
Luminaire Output= 6293 lumens  
 Luminaire Efficacy = 95.15 LPW

**SPACING CRITERION**

| ALONG | ACROSS |
|-------|--------|
| 1.20  | 1.19   |

**3-WAN107-8K-4L-FPA-1DRDM-UNV-2/850**

TEST NO.=LA-T2789  
 LED TYPE= 32 LED MODULE  
 NO. OF MODULE=4  
 SYSTEM WATT (W)=66.14  
 CRI ≥ 80  
 L70(Hrs.) = 179,000  
 PHOTOMETRY TYPE=C



**CANDLEPOWER**

| ANGLE | END  | 45   | CROSS |
|-------|------|------|-------|
| 0     | 2318 | 2318 | 2318  |
| 5     | 2298 | 2289 | 2286  |
| 15    | 2186 | 2191 | 2193  |
| 25    | 1990 | 1989 | 1980  |
| 35    | 1694 | 1694 | 1694  |
| 45    | 1328 | 1327 | 1328  |
| 55    | 914  | 949  | 981   |
| 65    | 548  | 625  | 703   |
| 75    | 263  | 382  | 499   |
| 85    | 95   | 241  | 379   |
| 90    | 27   | 184  | 330   |
| 95    | 21   | 176  | 314   |
| 105   | 21   | 163  | 286   |
| 115   | 19   | 134  | 231   |
| 125   | 19   | 99   | 171   |
| 135   | 16   | 70   | 115   |
| 145   | 14   | 48   | 73    |
| 155   | 12   | 32   | 47    |
| 165   | 10   | 20   | 26    |
| 175   | 10   | 13   | 14    |
| 180   | 6    | 6    | 6     |

**ZONAL LUMEN SUMMARY**

| DEGREES | LUMENS | % LAMP | % FIXTURE |
|---------|--------|--------|-----------|
| 0-30    | 1759   | 23.7   | 26.4      |
| 0-40    | 2823   | 38.1   | 42.4      |
| 0-60    | 4702   | 63.5   | 70.7      |
| 0-90    | 5972   | 80.7   | 89.8      |
| 90-120  | 486    | 6.5    | 7.3       |
| 90-150  | 654    | 8.8    | 9.8       |
| 90-180  | 675    | 9.1    | 10.1      |
| 0-180   | 6650   | 89.8   | 100.0     |

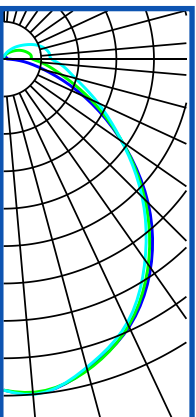
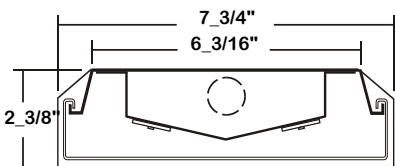
Luminaire Output= 6650 lumens  
 Luminaire Efficacy = 98.78 LPW

**SPACING CRITERION**

| ALONG | ACROSS |
|-------|--------|
| 1.18  | 1.18   |

**3-WAN107-8K-8L-FPA-1DRDM(PHI)-UNV-2PS/840(SAM)**

TEST NO.=LA-T2565  
 LED TYPE= 24 LED MODULE  
 NO. OF MODULE=8  
 SYSTEM WATT (W)=64.8 W  
 CRI ≥ 80  
 L70(Hrs.) ≥ 50,000  
 PHOTOMETRY TYPE=C



**CANDLEPOWER**

| ANGLE | END  | 45   | CROSS |
|-------|------|------|-------|
| 0     | 2578 | 2578 | 2578  |
| 5     | 2616 | 2605 | 2621  |
| 15    | 2502 | 2509 | 2486  |
| 25    | 2301 | 2291 | 2266  |
| 35    | 1986 | 1954 | 1910  |
| 45    | 1582 | 1549 | 1518  |
| 55    | 1120 | 1122 | 1119  |
| 65    | 688  | 745  | 807   |
| 75    | 332  | 461  | 575   |
| 85    | 118  | 290  | 439   |
| 90    | 37   | 223  | 371   |
| 95    | 26   | 216  | 359   |
| 105   | 27   | 194  | 328   |
| 115   | 24   | 157  | 265   |
| 125   | 23   | 117  | 191   |
| 135   | 19   | 81   | 134   |
| 145   | 17   | 55   | 87    |
| 155   | 15   | 37   | 55    |
| 165   | 13   | 23   | 29    |
| 175   | 12   | 13   | 20    |
| 180   | 11   | 11   | 11    |

**ZONAL LUMEN SUMMARY**

| DEGREES | LUMENS | % LAMP | % FIXTURE |
|---------|--------|--------|-----------|
| 0-30    | 2017   | 23.4   | 26.0      |
| 0-40    | 3243   | 37.6   | 41.8      |
| 0-60    | 5448   | 63.2   | 70.3      |
| 0-90    | 6964   | 80.8   | 89.8      |
| 90-120  | 572    | 6.6    | 7.4       |
| 90-150  | 767    | 8.9    | 9.9       |
| 90-180  | 791    | 9.2    | 10.2      |
| 0-180   | 7755   | 90.0   | 100.0     |

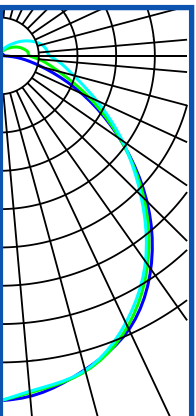
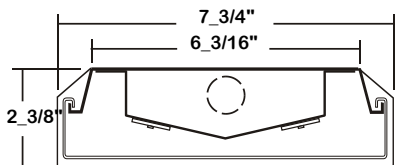
Luminaire Output= 7755 lumens  
 Luminaire Efficacy = 119.7 LPW

**SPACING CRITERION**

| ALONG | ACROSS |
|-------|--------|
| 1.23  | 1.20   |

**3-WAN107-12K-8L-FPA-1DRDM(ULT)-UNV-2PS/840(SAM)**

TEST NO.=LA-T2569  
 LED TYPE= 32 LED MODULE  
 NO. OF MODULE=8  
 SYSTEM WATT (W)=89.7  
 CRI ≥ 80  
 L70(Hrs.) ≥ 50,000  
 PHOTOMETRY TYPE=C



**CANDLEPOWER**

| ANGLE | END  | 45   | CROSS |
|-------|------|------|-------|
| 0     | 3688 | 3688 | 3688  |
| 5     | 3655 | 3617 | 3601  |
| 15    | 3474 | 3493 | 3482  |
| 25    | 3229 | 3195 | 3150  |
| 35    | 2783 | 2724 | 2685  |
| 45    | 2199 | 2156 | 2108  |
| 55    | 1552 | 1557 | 1580  |
| 65    | 957  | 1033 | 1125  |
| 75    | 464  | 642  | 806   |
| 85    | 163  | 412  | 611   |
| 90    | 51   | 313  | 526   |
| 95    | 38   | 300  | 502   |
| 105   | 38   | 268  | 458   |
| 115   | 35   | 218  | 370   |
| 125   | 31   | 161  | 271   |
| 135   | 28   | 113  | 180   |
| 145   | 22   | 77   | 120   |
| 155   | 20   | 52   | 73    |
| 165   | 17   | 33   | 42    |
| 175   | 16   | 25   | 26    |
| 180   | 14   | 14   | 14    |

**ZONAL LUMEN SUMMARY**

| DEGREES | LUMENS | % LAMP | % FIXTURE |
|---------|--------|--------|-----------|
| 0-30    | 2812   | 23.4   | 26.0      |
| 0-40    | 4526   | 37.7   | 41.9      |
| 0-60    | 7595   | 63.3   | 70.3      |
| 0-90    | 9709   | 80.9   | 89.8      |
| 90-120  | 797    | 6.6    | 7.4       |
| 90-150  | 1068   | 8.9    | 9.9       |
| 90-180  | 1102   | 9.2    | 10.2      |
| 0-180   | 10811  | 90.0   | 100.0     |

Luminaire Output= 10811 lumens  
 Luminaire Efficacy = 120.5 LPW

**SPACING CRITERION**

| ALONG | ACROSS |
|-------|--------|
| 1.20  | 1.18   |



**LOS ANGELES LIGHTING MFG. CO.**

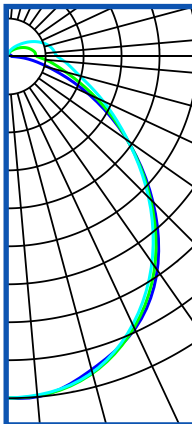
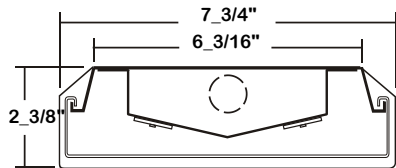
10141 OLNEY ST. / EL MONTE, CA 91731

TEL 626-454-8300 | FAX 626-454-8399 | www.lalighting.com

# PHOTOMETRIC DATA - 3-WAN107 SERIES

## 3-WAN107-16K-8L-FPA-2DRDM(PHI)-UNV-2PS/840(SAM)

TEST NO.=LA-T2566  
 LED TYPE= 32 LED MODULE  
 NO. OF MODULE=8  
 SYSTEM WATT (W)=136.2  
 CRI ≥ 80  
 L70(Hrs.) ≥ 50,000  
 PHOTOMETRY TYPE=C



### CANDLEPOWER

| ANGLE | END  | 45   | CROSS |
|-------|------|------|-------|
| 0     | 4948 | 4948 | 4948  |
| 5     | 4949 | 4936 | 4922  |
| 15    | 4697 | 4752 | 4738  |
| 25    | 4357 | 4332 | 4285  |
| 35    | 3778 | 3715 | 3644  |
| 45    | 2975 | 2929 | 2887  |
| 55    | 2120 | 2124 | 2131  |
| 65    | 1300 | 1411 | 1528  |
| 75    | 625  | 873  | 1079  |
| 85    | 224  | 554  | 826   |
| 90    | 64   | 426  | 721   |
| 95    | 53   | 406  | 684   |
| 105   | 50   | 366  | 614   |
| 115   | 46   | 299  | 498   |
| 125   | 43   | 222  | 366   |
| 135   | 37   | 155  | 247   |
| 145   | 33   | 105  | 164   |
| 155   | 26   | 71   | 103   |
| 165   | 25   | 42   | 62    |
| 175   | 22   | 28   | 32    |
| 180   | 21   | 21   | 21    |

### ZONAL LUMEN SUMMARY

| DEGREES | LUMENS | % LAMP | % FIXTURE |
|---------|--------|--------|-----------|
| 0-30    | 3816   | 23.4   | 26.0      |
| 0-40    | 6149   | 37.7   | 41.9      |
| 0-60    | 10324  | 63.3   | 70.3      |
| 0-90    | 13192  | 80.8   | 89.8      |
| 90-120  | 1081   | 6.6    | 7.4       |
| 90-150  | 1451   | 8.9    | 9.9       |
| 90-180  | 1497   | 9.2    | 10.2      |
| 0-180   | 14689  | 90.0   | 100.0     |

Luminaire Output= 14689 lumens  
 Luminaire Efficacy = 107.8 LPW

### SPACING CRITERION

| ALONG | ACROSS |
|-------|--------|
| 1.21  | 1.19   |

This Space is intentionally left blank.

This Space is intentionally left blank.

This Space is intentionally left blank.

