



# OPEN COMMERCIAL

## KDS100 SERIES



### Knocked Down One-Light Strip



- Knock Down One-Light Strip, Individual Pack
- 22 Ga. Cold Rolled Steel Housing
- Baked White Polyester Finish
- Screw-On End Caps
- End Plates May be Used as Channel Couplings
- Cover Secured by Two Quarter Turn Fasteners
- Suitable for Damp Locations
- Available with:
  - Fluorescent, LED and LED T8 (Internally Driven)
  - 14 Ga. Wire Guard
  - 4" Leg Height V-Hook



*Photometric Data and IES Files are Available on [www.lalighting.com](http://www.lalighting.com)*



**LOS ANGELES LIGHTING MFG. CO.**

10141 OLNEY ST. / EL MONTE, CA 91731

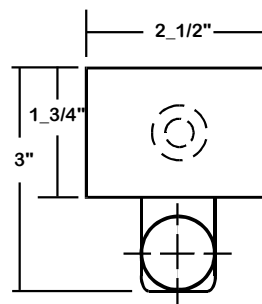
TEL : 626-454-8300 FAX : 626-454-8399

[www.lalighting.com](http://www.lalighting.com)



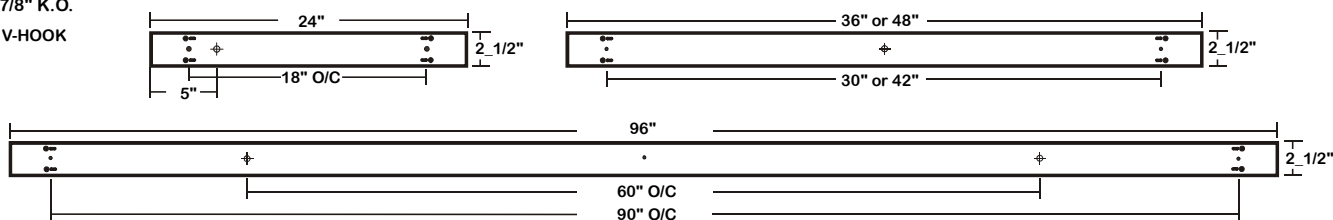
# KDS100 SERIES

## CROSS SECTION



## BACK PLATE

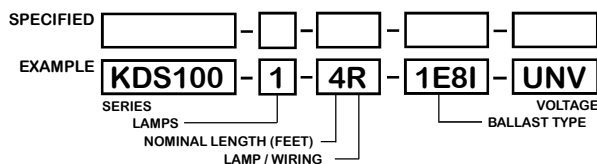
- 3/16" MTG. HOLE
- $\phi$  7/8" K.O.
- V-HOOK



## CATALOG NUMBER

	NOMINAL LENGTH	TOTAL LAMPS	LAMP TYPE
KDS100-1-2R-1E8I-UNV	2'	1	T8
KDS100-1-3R-1E8I-UNV	3'	1	T8
KDS100-1-4R-1E8I-UNV	4'	1	T8
KDS100-1-8RT-2E8I-UNV	8'	2	T8

## ORDERING GUIDE



## AVAILABLE ACCESSORIES

ACCESSORIES	CAT. NO.
Wire Guard - 14 Ga.	WG14-KDS100
4" Leg Height V-Hook	V4

## SPECIFICATIONS

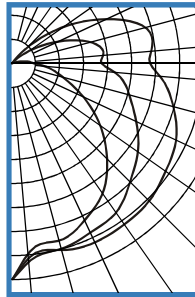
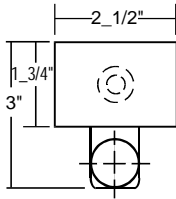
- **TYPE** Knocked down one-light strip.
- **CONSTRUCTION** 22 ga. cold rolled steel housing. End plates are fastened to housing by sheet metal screws to assure rigidity. End plates may be used as channel couplings.
- **FINISH** Bakes white polyester finish standard, minimum reflectance 86%
- **WIRE GUARDS** Chrome epoxy powder coated.
- **WIRING** UNV (universal voltage 120v thru 277v.) ballasts as available, or as otherwise specified.
- **LABELS** U.L. or ETL Listed. Suitable for damp locations.



**PHOTOMETRIC DATA**

**KDS100-1-4R-E8**

TEST NO.=LA-T0273-1  
 LAMP TYPE=FO32T8  
 NO. OF LAMP=1  
 LUMENS PER LAMP=2900  
 WATTS PER LAMP=32  
 BALLAST FACTOR=1  
 PHOTOMETRY TYPE=C



**CANDLEPOWER**

ANGLE	END	45	CROSS
0	512	512	512
5	451	470	462
15	434	454	458
25	409	441	467
35	374	430	464
45	318	395	459
55	254	363	444
65	185	324	428
75	123	287	395
85	78	244	351
90	52	211	326
95	42	216	330
105	14	193	327
115	1	123	248
125	0	56	153
135	0	12	61
145	0	0	4
155	0	0	0
165	0	0	0
175	0	0	0
180	0	0	0

**ZONAL LUMEN SUMMARY**

DEGREES	LUMENS	% LAMP	% FIXTURE
0-30	375	12.9	13.8
0-40	642	22.1	23.6
0-60	1265	43.6	46.5
0-90	2109	72.7	77.5
90-120	534	18.4	19.6
90-150	611	21.1	22.5
90-180	611	21.1	22.5
0-180	2719	93.8	100.0

Lumen Output = 2719 lumens  
 Luminaire Efficiency = 93.8%

**SPACING CRITERION**

ALONG	ACROSS
1.14	1.39

This space is intentionally left blank.

This space is intentionally left blank.

This space is intentionally left blank.

