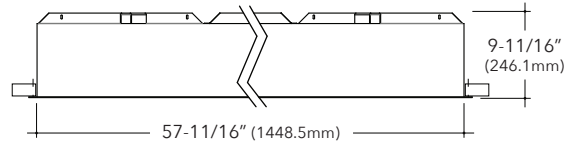




# FINA F60

## 60" Recessed Architectural Round



### Key Features

- Extruded aluminum housing is rolled and welded for seamless finish with 1/4" trim
- Aluminum top cover conceals all electrical components. Highly reflective die-formed white painted steel reflector
- FINA offered with a 5-year limited warranty. Covers LED, driver and fixture
- IC Rated, UL and cUL Listed, approved for dry/damp location
- Maximum fixture weight is 110 lbs
- Room-side maintenance for LED system
- Buy American Act compliant



Example Part #: F60-A-830HO-G-U-OL1-1-0-W



| A   | -----  | -----  | --  |
|---|--|--|---|
| SHIELDING   | CRI, CCT & OUTPUT  | MOUNTING   | VOLTAGE   |
| <b>A</b> - Flat Satine Lens<br><i>Shielding pg. 2</i> | <b>_27_</b> - 2700K<br><b>_30_</b> - 3000K<br><b>_35_</b> - 3500K<br><b>_40_</b> - 4000K<br><b>CL</b> - Custom Lumens<br><b>CW</b> - Custom Watts<br><i>Lumen Output pg. 2</i><br><br><i>Example: 830HO is 8 = 80 CRI; 30 = 3000K; HO = High Output; Blank = Standard Output</i> | <b>G</b> - Grid Ceiling<br><b>FL</b> - Flanged<br><b>NF</b> - Non-Flanged<br><b>SF</b> - Spackle Flange<br><i>Mounting pg. 2</i> | <b>U</b> - Universal (120 thru 277V)<br><b>1</b> - 120V<br><b>2</b> - 277V<br><b>3</b> - 347V<br><i>Voltage pg. 3</i> |

| ---  | --   | ---   | --                                      |
|--|--|---|---|
| DRIVER   | CIRCUITING   | BATTERY & EMERGENCY   | FINISH                                  |
| <b>OL1</b> - Osram (10%, 0-10v, standard)<br><b>OL2</b> - Osram (1%, 0-10v)<br><b>OL3</b> - Osram 347v (10%, 0-10v)<br><b>EE1</b> - eldoLED ECOdrive (1%, 0-10v)<br><b>ES1</b> - eldoLED SOLOdrive (0%, 0-10v)<br><b>LH1</b> - Lutron Hi-lume (1%, EcoSystem)<br><b>L51</b> - Lutron 5-Series (5%, EcoSystem)<br><b>PL2</b> - Philips Xitanium (1%, 0-10v)<br><b>PS1</b> - Philips Xitanium (50%/100%)<br><b>ND</b> - Non-Dimming<br><i>Driver pg. 3</i> | <b>1</b> - Single Circuit<br><b>E</b> - Emergency (entire fixture)<br><b>N</b> - Night Light (entire fixture)<br><i>Circuiting pg. 3</i> | <b>0</b> - None<br><b>1P</b> - Philips Bodine 10W<br><b>1I</b> - Iota 10W<br><b>1IC</b> - Iota 10W (CEC Listed)<br><b>1G</b> - Philips Bodine GTD<br><i>Battery and Emergency pg. 3</i> | <b>W</b> - White<br><i>Finish pg. 3</i> |

| ---   | ---  |
|---|--|
| FIXTURE OPTIONS   | CONTROLS   |
| <b>CP</b> - Chicago Plenum<br><b>AM</b> - Antimicrobial Paint<br><b>FW6</b> - 6' Flex Whip<br><b>GMF</b> - Slow Blow Fusing<br><i>Fixture Options pg. 4</i> | <i>Pinnacle is able to accommodate different control solutions from different manufacturers. Consult Factory for more information.</i> |

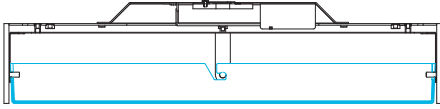


## Shielding

- White virgin acrylic lens with matte finish, removable for LED access

### A

Flat Lens



## Output

- Specify either 80 or 90 CRI
- Longer lead-time may apply for 90 CRI. Consult factory.
- 80 CRI = R9≥19 and 90 CRI = R9≥61

## Custom Output- Lumens OR Wattage

**CL** \_\_\_\_\_ Specify CRI, CCT and desired lumens (i.e. CL8352000)

Specify lumens between standard offering listed below. Lumens are specified per color temp

**CW** \_\_\_\_\_ Specify CRI, CCT and desired wattage (i.e. CW940200)

Specify watts between standard offering listed below

## 80 CRI

|              | Color | Output   | Watts | Shielding<br>A<br>Satine Lens |       |
|--------------|-------|----------|-------|-------------------------------|-------|
|              |       |          |       | Lumens                        | LPW   |
| <b>830</b>   | 3000K | Standard | 145.2 | 14773                         | 101.7 |
| <b>830HO</b> | 3000K | High     | 295.9 | 28710                         | 97.0  |
| <b>835</b>   | 3500K | Standard | 145.2 | 15191                         | 104.6 |
| <b>835HO</b> | 3500K | High     | 295.9 | 29523                         | 99.8  |
| <b>840</b>   | 4000K | Standard | 145.2 | 15485                         | 106.6 |
| <b>840HO</b> | 4000K | High     | 295.9 | 30094                         | 101.7 |

## 90 CRI

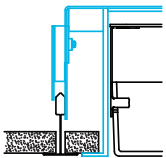
|              |       |          |       |       |      |
|--------------|-------|----------|-------|-------|------|
| <b>927</b>   | 2700K | Standard | 145.2 | 11676 | 80.4 |
| <b>927HO</b> | 2700K | High     | 295.9 | 22691 | 76.7 |
| <b>930</b>   | 3000K | Standard | 145.2 | 13606 | 93.7 |
| <b>930HO</b> | 3000K | High     | 295.9 | 26442 | 89.4 |
| <b>935</b>   | 3500K | Standard | 145.2 | 13657 | 94.1 |
| <b>935HO</b> | 3500K | High     | 295.9 | 26542 | 89.7 |
| <b>940</b>   | 4000K | Standard | 145.2 | 13813 | 95.1 |
| <b>940HO</b> | 4000K | High     | 295.9 | 26844 | 90.7 |

## Mounting

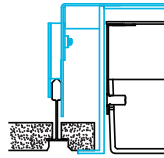
- Designed to install into acoustical grid and inaccessible ceilings
- Tie off fixture to structure with retention wires
- Maximum fixture weight is 110 lbs

### G

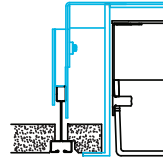
Grid Ceiling with 3/4" (19.1mm) Trim  
15/16" T-Bar



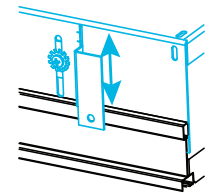
9/16" T-Bar



Screw Slot T-Bar

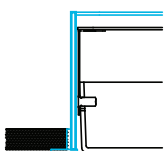


Recessed box allows for 1/2" of adjustability to accommodate a variety of grid ceilings



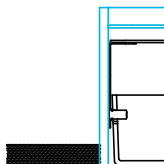
### FL

Standard 3/4" (19.1mm) Flange  
Exposed Flange



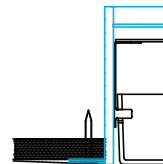
### NF

Non-Flange with 1/4" (6.4mm) Trim  
Metal Pan or Millwork



### SF

Spackle Flange  
Drywall, Flangeless



Specifications and dimensions subject to change without notice. Specification sheets that appear on pinnacle-ltg.com are the most recent version and supersede all other previously printed or electronic versions.

Designed in Denver, CO • USA | pinnacle-ltg.com | O: 303-322-5570 F: 303-322-5568



## Voltage

- Some FINA configurations will not accommodate all voltage options; consult with factory

|          |           |
|----------|-----------|
| <b>U</b> | Universal |
| <b>1</b> | 120 volt  |
| <b>2</b> | 277 volt  |
| <b>3</b> | 347 volt  |

## Driver

- Standard Driver Option = OL1
- Driver Lifetime: 50,000 hours at 25°C ambient operating conditions
- For more Driver options, see Pinnacle Resource Guide on download pages at pinnacle-ltg.com
- Some FINA configurations will not accommodate all driver options; consult with factory

|            |   |
|------------|---|
| <b>OL1</b> | Osram Optotronic 10%, 0-10v                               |
| <b>OL2</b> | Osram Optotronic 1%, 0-10v, nominal 1% dimming range      |
| <b>OL3</b> | Osram Optotronic 347v 10%, 0-10v, requires 347v option    |
| <b>EE1</b> | eldoLED ECOdrive 1%, 0-10v Logarithmic                    |
| <b>EE2</b> | eldoLED ECOdrive 1%, 0-10v Linear                         |
| <b>ES1</b> | eldoLED SOLOdrive 0%, 0-10v Logarithmic                   |
| <b>ES2</b> | eldoLED SOLOdrive 0%, 0-10v Linear                        |
| <b>LH1</b> | Lutron Hi-lume Soft-on, Fade-to-black 1%, EcoSystem, LDE1 |
| <b>L51</b> | Lutron 5-Series 5%, EcoSystem, LDE5                       |
| <b>PL2</b> | Philips Advance Xitanium 1%, 0-10v                        |
| <b>PS1</b> | Philips Advance Xitanium Step Dimming 50%/100%            |
| <b>ND</b>  | Non-Dimming   |

## Circuiting

- Select fixture circuiting from options below
- Some FINA configurations will not accommodate all circuiting options; consult with factory

|          |                          |
|----------|--------------------------|
| <b>1</b> | Single Circuit           |
| <b>E</b> | Emergency Circuit only   |
| <b>N</b> | Night Light Circuit only |

## Battery & Emergency

- Select battery or emergency options if required
- Battery duration is 90 minutes
- Test button is integral to fixture
- For more Battery options, see Pinnacle Resource Guide

|            |                               |
|------------|-------------------------------|
| <b>0</b>   | No Battery                    |
| <b>1P</b>  | Philips Bodine 10w Integral   |
| <b>1I</b>  | Iota 10w Integral             |
| <b>1IC</b> | Iota 10w Integral, CEC Listed |
| <b>1G</b>  | Philips Bodine GTD            |

### For Approximate Battery Lumen Output

- Multiply battery wattage X fixture LPW shown on Lumen Table
- 10 (watts) x 92.3 (LPW) = 923 battery lumen output

### Battery & Emergency Ordering Examples

- Single circuit, 10w integral battery      Ordering Code: 1-1P
- Emergency circuit only, 10w integral battery      Ordering Code: E-1P

## Finish

- Powder-coat white painted finish on exposed trim

|          |       |
|----------|-------|
| <b>W</b> | White |
|----------|-------|



## Fixture Options

- Additional options to enhance the fixture and finish of the product

|            |                         |
|------------|-------------------------|
| <b>CP</b>  | Chicago Plenum          |
| <b>AM</b>  | Antimicrobial Paint     |
| <b>FW6</b> | Flex Whip 6'            |
| <b>GMF</b> | Internal Slow Blow Fuse |

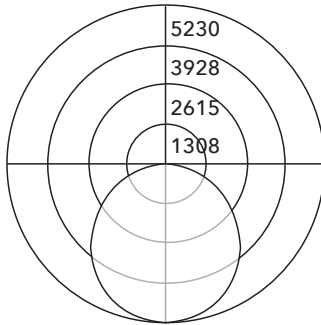
## Controls

- Pinnacle is able to accommodate different control solutions from different manufacturers. Consult Factory for more information.

## Photometrics

### Satine Lens

|           |           |
|-----------|-----------|
| Test #    | ITL84339  |
| Catalog # | F60-A-840 |
| Lumens    | 15485 lm  |
| Watts     | 145.2 W   |
| Efficacy  | 107 LPW   |



### Candela Distribution

| Vert Angle | Horizontal Angle |      |      |      |      |
|------------|------------------|------|------|------|------|
|            | 0                | 22.5 | 45   | 67.5 | 90   |
| 0          | 5230             | 5230 | 5230 | 5230 | 5230 |
| 5          | 5216             | 5217 | 5217 | 5216 | 5218 |
| 10         | 5156             | 5158 | 5158 | 5158 | 5159 |
| 15         | 5057             | 5055 | 5054 | 5053 | 5056 |
| 20         | 4908             | 4908 | 4908 | 4908 | 4907 |
| 25         | 4720             | 4718 | 4719 | 4718 | 4712 |
| 30         | 4493             | 4485 | 4483 | 4487 | 4482 |
| 35         | 4227             | 4219 | 4224 | 4218 | 4212 |
| 40         | 3926             | 3924 | 3921 | 3921 | 3916 |
| 45         | 3589             | 3589 | 3586 | 3585 | 3588 |
| 50         | 3226             | 3226 | 3222 | 3215 | 3223 |
| 55         | 2837             | 2834 | 2831 | 2830 | 2824 |
| 60         | 2430             | 2420 | 2417 | 2416 | 2412 |
| 65         | 1990             | 1984 | 1982 | 1982 | 1980 |
| 70         | 1540             | 1535 | 1532 | 1534 | 1531 |
| 75         | 1091             | 1086 | 1085 | 1088 | 1083 |
| 80         | 668              | 659  | 664  | 666  | 662  |
| 85         | 308              | 305  | 306  | 311  | 307  |
| 90         | 12               | 14   | 14   | 13   | 13   |

### Luminance Data (cd/sq.m)

| Angle In Degrees | Average 0-Deg | Average 45-Deg | Average 90-Deg |
|------------------|---------------|----------------|----------------|
| 45               | 3007          | 3005           | 3006           |
| 55               | 2930          | 2924           | 2917           |
| 65               | 2790          | 2778           | 2775           |
| 75               | 2497          | 2484           | 2478           |
| 85               | 2093          | 2082           | 2086           |

For all available IES files, please visit our website at [pinnacle-ltg.com](http://pinnacle-ltg.com). Photometry testing in accordance to IESNA-LM-79-08 at an NVLAP accredited testing laboratory. Testing conducted at 25°C ambient conditions

## Approvals & Certifications

**Construction:** Extruded aluminum housing is rolled and welded for seamless finish with minimal trim detail. Aluminum top cover conceals all electrical components. Highly reflective die-formed white painted steel reflector. Wiring access on both sides and top of housing.

**Shielding:** Single piece diffuse lens creating a fully luminous housing. Available with standard satine lens.

**Mounting:** Designed to install into acoustical grid and inaccessible ceilings. Specify G for acoustical grid ceiling. Specify FL, NF, or SF for inaccessible ceilings. Tie off fixture to structure with retention wires. Maximum fixture weight is 110 lbs.

**LED:** 25°C test environment. Lumen output/wattage has a margin of +/- 5%. All luminaire configurations tested in accordance with IES LM-79. Diodes tested in accordance with IES LM-80. Lifetime calculated using IES TM-21. Minimum lifetime greater than 60,000 hours. MacAdam 3-Step Ellipses. Not all products are Lighting Facts listed. For all available IES files, please visit our website at [pinnacle-ltg.com](http://pinnacle-ltg.com).

**CRI, CCT & Output:** Two lumen packages available. Standard and High (HO). Custom outputs are available. Specify custom lumens or watts between standard offering listed on CRI, CCT & Output page. 80 CRI is available for 3000K, 3500K, and 4000K. 90 CRI is available for 2700K, 3000K, 3500K, and 4000K. 80 CRI = R9≥19 and 90 CRI = R9≥61.

**Voltage:** Universal (U), 120 volt (1), 277 volt (2) and 347 volt (3) options available. Must specify OL3 in Driver section when 347 volt (3) is selected. Some FINA configurations will not accommodate all voltage options; consult with factory.

**Driver:** Standard Driver Option is Osram 0-10V, 10% = OL1. Electronic driver, Power

factor is >0.9 with a THD <20%. Driver Lifetime: 50,000 hours at 25°C ambient operating conditions. Ambient operating range: -20°F/-30°C to TBD. For more driver options, see Pinnacle Resource Guide on download pages at [pinnacle-ltg.com](http://pinnacle-ltg.com). Some FINA configurations will not accommodate all driver options.

**Circuiting:** Select from single circuit (1), Emergency circuit (E) or Night Light circuit (N). Some FINA configurations will not accommodate all circuiting options, consult with factory.

**Battery & Emergency:** Select battery or emergency options if required. If battery or emergency option is not required, enter 0. Battery duration is 90 minutes as standard. Test button is integral to fixture. For more Battery options, see Pinnacle Resource Guide on download pages at [pinnacle-ltg.com](http://pinnacle-ltg.com).

**Finish:** Standard powder-coat textured white. Contact factory for additional custom color and finish options.

**Controls:** Consult factory.

**Labels:** UL and cUL Listed. Standard and HO lumen packages are IC Rated, approved for dry/damp location unless otherwise noted.

**Fixture Weight:** 110 lbs. maximum

**Buy American Act Compliant**

**Warranty:** FINA LED offered with a 5-year limited warranty. Covers LED, driver and fixture.