



Bionic™ | Asymmetric Wall Wash

4" Recessed



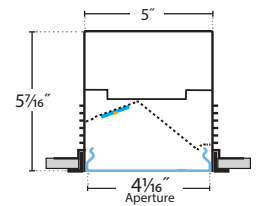
PRUDENTIAL LTG.

PRULITE.COM 213.746.0360



Type:

Job:



FLUSH / X3

The benchmark for recessed linear wall washes.

Industry-best combination of optical performance, efficiency and minimal aesthetics. Armstrong™ TechZone compatible.

Housing: Extruded aluminum accommodates a wide range of ceiling systems and complex installations.

Series: See also our Bionic recessed linear and Perimeter for visual continuity. Our P43 System is nearly identical with the same great optics and a budget-friendly steel housing.

BIO-LED4-LO-AWL-D1W
 1750 Delivered Lumens
 17.6 Watts
 100 lm/w

UPTO **100** LM/W

	LO	MO	SO	HO
lm/ft	450	750	950	1075
w/ft	4.5	7	10	12

[CLICK HERE](#)



Lumen output may vary +/- 5%
 4000K used for lm/ft estimates above
 3500K ~2% llf, 3000K ~4%, 2700K ~6%
 ~10% LLF for 90 CRI (4K, 3500K and 3K)

See LED Details PDF for more info

SERIES	LENS POSITION	LED COLOR	OUTPUT	NOMINAL LENGTH	TRIM COLOR	SHIELDING	DISTRIBUTION	CIRCUITING	VOLTAGE	CEILING SYSTEMS	DRIVERS	OPTIONS & CONTROLS
BIO-STD												
Standard	FLSH Flush Lens (Recommended for Wall Wash)	LED27 2700K (90CRI) LED3 3000K LED35 3500K LED4 4000K LED3-90 90CRI LED35-90 90CRI LED4-90 90CRI	LO Low MO Medium SO Standard HO High PROG Programmable Light Output (Specify desired lm/ft or w/ft)	2' 3' 4' 6' 8' R (Row length) NOTE: Individual fixtures are not intended for row mounting	TMW Textured Matte White (Standard) YGW Gloss White Y Premium Color CC Custom Color	AWL Acrylic Wall Wash Lens 	D1W Wall Wash	SC Single Circuit	UNV (120-277) 347 (Emergency battery requires a Step Down transformer)	X1 T-Bar 15/16" X1M T-Bar 9/16" X2 Dimensional T-Bar Armstrong Interlude® X6 Slot Grid X3 Hard Ceiling (Flange Trim) X7BF Hard Ceiling (Trimless Mud-over Backer Flange) M Mixed Ceiling	ND Non-Dimming DM10 0-10v, 10% Dimming (Standard) DM01 0-10v, 1% Dimming STEP Step Dimming, 100-50-Off, Osram NOTE: Lumens and watts per foot may differ for STEP drivers, consult factory LDES 5%, Lutron (Ecosystem) LDE1 1%, Lutron (Soft Fade to Black, Ecosystem) L3DA 1%, Lutron, 3 Wire ECO 1% 0-10v, EldoLED ECDA 1% DALI, EldoLED SOLO 0.1% 0-10v, EldoLED (Dim to Dark) SODA 0.1% DALI, EldoLED (Dim to Dark)	EML Emergency Battery, Low (D1, D1W ~ 850 delivered lumens, D1G ~ 600) EMH Emergency Battery, High (D1, D1W ~1175 delivered lumens, D1G ~ 900) SENSORS: 205 WattStopper PIR Occupancy 205-STEP: Dim to 50% 205-DM: Dim to 10% / 1% LUX Phillips DLH 3E Enlighted 2-Wire DLH & Environmental CP Chicago Plenum PRUBIN Meticulous Binning and Labeling every LED Board within a 2-Step MacAdams Ellipse CORNERS: M1 12" MR16 Module (adj.) 1/50w (max) Lamp M2 12" MR16 Module (adj.) 2/50w (max) Lamp M4 Cross MR16 Module (adj.) 1/50w (max) Lamp NOTE: All MR16s by others



Bionic™ | Asymmetric Wall Wash

4" Recessed



PRUDENTIAL LTG.

PRULITE.COM 213.746.0360

AWL-D1W WALL WASH

Low Output:

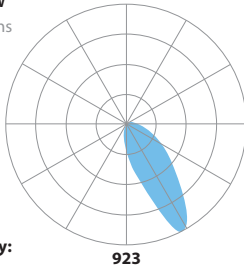
BIO-LED4-LO-AWL-D1W

1750 Delivered Lumens

17.6 Watts

100 lm/w

LIGHT LABS TEST
#L021507501R02



Zonal Lumen Summary:

0-90 = 100%

Vertical Angle	0	22.5	45	67.5	90
0	923	923	923	923	923
5	1103	1091	1051	987	921
15	1806	1684	1395	1116	895
25	2434	2424	2012	1249	844
35	1799	1887	2127	1401	764
45	1227	1271	1460	1409	650
55	784	804	884	1075	499
65	450	461	488	602	317
75	195	203	203	245	145
85	29	31	34	40	25
90	0	0	0	0	0

LUMEN MAINTENANCE

Designed to last with cool running mid-power LEDs projected to maintain 90% (L90) of their initial output for 100,000 hours (at HO), and L70 exceeding 150,000 hours.

LED SYSTEM

LED modules and drivers are field replaceable.

PROG (OPTIONAL)

Programmable light output. Specify desired lumens or watts per linear foot. Min: 2½ w/ft, consult factory for requests above 12 w/ft.

BINNING

Standard binning (all Prudential LED boards) includes testing at the chip level and board integration to provide consistent color temperature within a 3-step MacAdams ellipse, with +/- 5% lumen output range and +/- .004 Duv.

PRUBIN™ (OPTIONAL)

Prudential Ltg's exclusive 'job binning' method that ensures color temperature consistency across all luminaires on a project. Meticulously testing and labeling **EVERY LED BOARD** to +/- 25 lumens, +/- 50k CCT and +/- .004 Duv — while also separating positive from negative — allows us to match color, hue and intensity throughout a project and provides a consistent color temperature within a 2-step MacAdams ellipse.

LABELS

ETL damp labeled and I.B.E.W. manufactured.

ELECTRICAL

Must specify LED dimming controls. LED fixtures have constant current driver(s) with less than 20% THD when loaded to a minimum of 60%. Drivers sink a maximum of 6mA per driver. DM10 LED drivers are 0-10V dimmable and are compatible with most 0-10V wall slide dimmers and direct 0-10V analog signal dimmers. Max driver size 1¼" w x 1" h.

CONSTRUCTION

Housing: Extruded aluminum >25% PC recycled, 100% recyclable.

Lens: Acrylic, 100% recyclable.

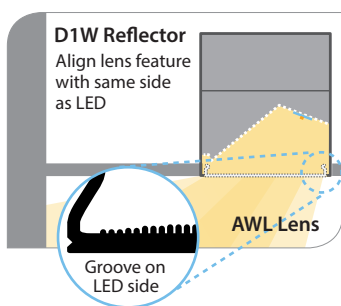
MOUNTING

Recessed into drywall or t-bar ceilings.

WARRANTY

Single-source, 5 year limited warranty covers standard components and construction.

WALL WASH ORIENTATION



Wall Washing.

Our PruOptics™ reflector/refractor design delivers a high performance wall wash. No mechanical kickers needed.



Standard Output - 750 lm/ft	10	9'	40fc	76/16	4.75
-----------------------------	----	----	------	-------	------

Footcandles on Wall

Height	1'	2'	3'	4'	5'	6'	7'	8'	9'
1'	16	17	17	17	17	17	17	17	16
2'	22	23	24	23	22	22	22	22	22
3'	29	31	32	32	29	29	29	29	29
4'	39	43	44	43	39	39	39	39	39
5'	51	56	59	56	51	51	51	51	51
6'	62	68	72	68	62	62	62	62	62
7'	67	73	76	73	67	67	67	67	67
8'	55	60	62	60	55	55	55	55	55
9'	26	28	29	28	26	26	26	26	26





Bionic™ | Asymmetric Wall Wash 4" Recessed



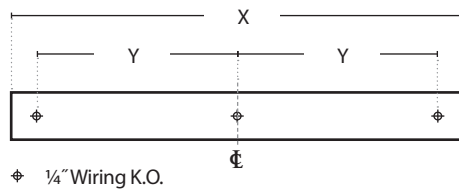
PRUDENTIAL LTG.

PRULITE.COM 213.746.0360



MOUNTING LOCATIONS

Mounting Detail (1) Housing Detail for 1/4"-20

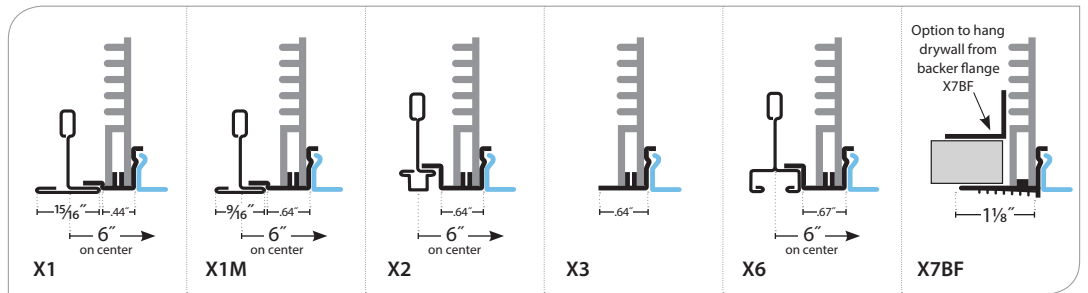


Mounting Conversion Chart

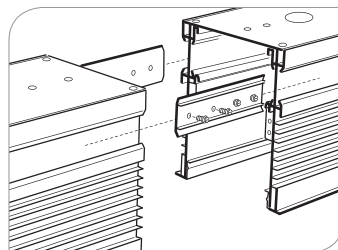
X =	2'	3'	4'	5'	6'	7'	8'
Y =*	9"	15"	21"	27"	33"	39"	45"

* From Centerline CL

CEILING SYSTEMS



ADJOINING DETAIL



Prudential Ltg. reserves the right to change design specifications or materials without notice. Please visit prulite.com for most current data.
© 2014 All rights reserved - All products manufactured at: Prudential Ltg. 1774 E. 21st Street, Los Angeles, CA 90058



Bionic™ | Asymmetric Wall Wash 4" Recessed



PRUDENTIAL LTG.

PRULITE.COM 213.746.0360

NEW YSW – Seashell White (Matte)	NEW YCH – Champagne (Metallic)
YSL – Silver (Metallic)	YPE – Pewter (Matte)
YRG – Rain Grey (Gloss)	YSTM – Storm Grey (Matte)
NEW YBK – Black (Matte)	YBB – Black (Semi Gloss)
YSKM – Sky (Matte)	NEW YMB – Military Blue (Matte)
NEW YIB – Interstate Blue (Matte)	YSAM – Sapphire (Matte)
NEW YFGM – Forest Green (Matte)	YBR – Bronze (Matte)
YBY – Boysenberry (Matte)	YSRM – Sunset Red (Matte)
NEW YOR – Orange (Matte)	YDAM – Daffodil (Matte)

CONTROL SENSORS



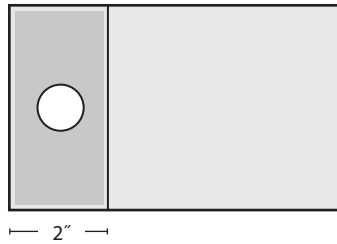
205 WattStopper PIR Occupancy



LUX Phillips LuxSense Daylight Harvesting, used with Phillips HFR Driver



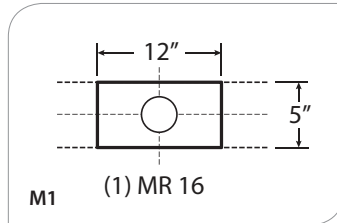
3E Enlighted 2-Wire PIR Daylight, Motion & Environmental Sensor



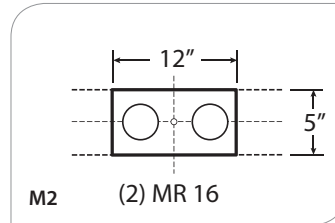
2"

NOTE: Sensor plate will match fixture color finish
Consult factory for other sensors, please email:
info@prulite.com

LAMPS



M1 (1) MR 16

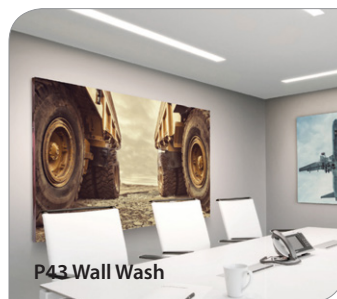


M2 (2) MR 16

Choose from one of our Premium Colors with no set-up fee.

For paint chip samples, please e-mail:
info@prulite.com

COMPLIMENTARY FIXTURES



P43 Wall Wash



Bionic Recessed Linear



Bionic Perimeter Wall Grazer



Prudential Ltg. reserves the right to change design specifications or materials without notice. Please visit prulite.com for most current data.
© 2014 All rights reserved – All products manufactured at: Prudential Ltg. 1774 E. 21st Street, Los Angeles, CA 90058