

### INSTALLATION INSTRUCTIONS

**CAUTION:** THIS PRODUCT MUST BE INSTALLED IN ACCORDANCE WITH THE APPLICABLE INSTALLATION CODE BY A PERSON FAMILIAR WITH THE CONSTRUCTION AND OPERATION OF THE PRODUCT AND THE HAZARDS INVOLVED. SAVE THESE INSTRUCTIONS!

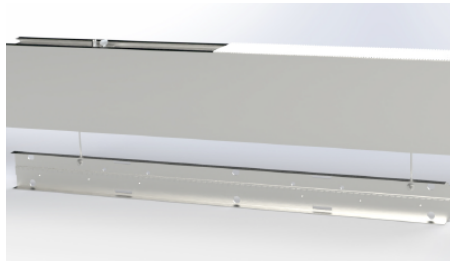
**WARNING:** Before beginning installation, disconnect electrical power at main switch or circuit breaker.

### IMPORTANT SAFEGUARDS

Ensure that the electrical wiring conforms to the National Electrical Code NEC® and local regulations if applicable. Installation and servicing of this equipment should be performed by qualified service personnel only. Do not mount near gas or electric heaters. Equipment should be mounted in locations and at heights where it will not readily be subjected to tampering by unauthorized personnel. The use of accessory equipment not recommended by the manufacturer may cause an unsafe condition. Any modification or use of non-original components will void the warranty and product liability. Do not use this equipment for other than intended use.

### Installation (wiring)

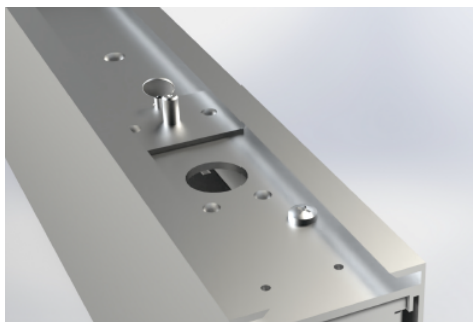
1. Remove the snap-in lens to gain access to the inside of the fixture.
2. Press and release the quick-release holders to drop down the board tray, which is held on by tethers.



3. Make electrical connections inside the fixture by connecting power to the fixture's quick connect, and ground.

### Installation (hanging canopies)

1. Locate the adjustable sliding mounting bracket on the top of the fixture (one per side).
2. Adjust mounting brackets to an even position on both sides. Using the included thumb-turn, screw down until it grips to the fixture, locking the mounting bracket into place.
3. Install hanging canopy to mounting bracket. For canopies with power feed, run feed through the 7/8" hole.



### INSTALLATION INSTRUCTIONS

#### Installation (continuous runs )

1. For fixtures ordered as continuous runs, a joiner plate/light trap will be provided for each fixture connection.
2. Using the included hardware, fasten the fixture together from the inside of the fixture.
3. Utilizing the top connection plate, connect the two fixtures using 2 fasteners and the included top mounting holes on each side.

