

## FIXTURE SPECIFICATIONS

### INTENDED USE

The specification grade **12113 NLP** Alcon Lighting Commercial LED Linear Suspended Pendant Mount Direct/Indirect Architectural Light Fixture delivers continuous clean lines and clear light to commercial, hospitality and residential interior lighting applications. Available with louvers, the louvered option offer reflectors to evenly distribute the LED lighting and minimize glare. Our modern, slim profiles and stylish designs offer excellent illumination, exceptional performance and versatility in offices, classrooms, conference rooms, museums, retail outlets, hotels, restaurants, and more. The integrated LED NLP is available in standard lengths of 2', 3', 4' and 8'.

### PRODUCT FAMILY

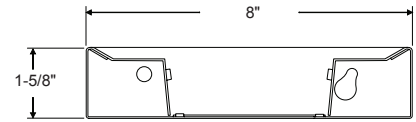
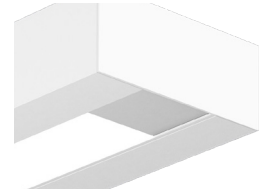
**12113-P** Pendant Mount  
**12113-S** Surface Mount

### AVAILABLE LENGTHS

**2FT, 3FT, 4FT & 8FT**  
**Continuous Run** | Consult Factory

### FEATURES

- Construction:** Housing is formed by Cold-Rolled Steel.
- Voltage:** 50/60 Hz Constant Current 0-10V @ 120-277V, TRIAC & ELV @ 120V
- Lens:** Glare Free Snap In Frosted Acrylic for Even Distribution
- Dimming:** 0-10V, TRIAC (Forward-Phase), ELV (Reverse-Phase)
- Controls:** Lutron Vive, Lutron Ecosystem, Philips EasySense, Siemens Enlightend
- CRI:** 80+ & 90+
- Life:** +60,000 Reported L70 Hours @ 55°C
- Ambient Operating Temperature:** 22°F (-30°C) ~ 122°F (50°C).
- Warranty:** 5 Years Carefree for Parts & Components (Labor Not Included)
- Listings:** UL, cUL listed, Damp Location



## ORDERING INFORMATION Example: (12113-P-S-4-D18-27K-8-D-WH-010)

Model	Mounting	Shape	Cont. Run	Wattage   Lumens	Color Temp	CRI	Distribution <sup>1</sup>	Finish	Pendant Mounting	Dimming	Options	Optional Controls
<b>12113</b> 2.5" x 4"	<b>P</b> Pendant <b>S</b> Surface	<b>S</b> Single Run <b>CR</b> Continuous Run	Single Run 2', 3', 4' or 8'	<b>D18</b> 18 Watts   2936 lms <b>D27</b> 27 Watts   3699 lms <b>D36</b> 36 Watts   3964 lms <b>D44</b> 44 Watts   5486 lms <b>D54</b> 54 Watts   5869 lms	<b>27K</b> 2700K <b>30K</b> 3000K <b>35K</b> 3500K <b>40K</b> 4000K <b>50K</b> 5000K <b>TW</b> Tunable White 2700-5000K	<b>8</b> Standard 80+ CRI <b>9</b> 90+ CRI	<b>(Blank)</b> Surface Mount Only <b>D</b> 100% Direct <b>D35I65</b> 35% Direct/65% Indirect <b>DI</b> 50% Direct/50% Indirect <b>D80I20</b> 80% Direct/20% Indirect <b>I</b> 100% Indirect	<b>WH Standard</b> White (Matte) RAL# 9003 <b>BK</b> Black (Matte) RAL# 9011 <b>SL</b> Silver (Matte) RAL# 9022 <b>XXXX</b> Specify XXXX: Use RAL # found on Page 2	<b>Blank</b> None Required Surface Mount <b>AC4</b> 4' Adjustable Aircraft Cable <b>AC8</b> 8' Adjustable Aircraft Cable <b>ACX</b> Specify X in Feet (Max 30')	<b>010 Standard</b> 0-10V 5-Wire <b>TRI</b> TRIAC Forward Phase 2-Wire <b>ELV</b> Electronic Low Voltage Reverse Phase 3-Wire <b>DL</b> DALI	<b>Blank</b> No Options <b>EM5</b> 5W Emergency Ballast <b>EM8</b> 8W Emergency Ballast <b>EM16</b> 16W Emergency Ballast <b>OS</b> Occupancy Sensor w/ Daylight Harvesting <b>DS</b> Daylight Dimming Photo Sensor <b>AB</b> Separate Dimming Control of Uplight and Downlight <b>EC</b> Decorative End Cap 1.5" Width <b>ILD</b> Indirect Light Diffuser for Close to Ceiling Applications	<b>Blank</b> No Controls <b>LV</b> Lutron VIVE™ Wireless <b>LE</b> Lutron Ecosystem™ <b>PH</b> Philips EasySense™ <b>EN</b> Siemens Enlightened™



<sup>1</sup> Only applies to pendant mount, leave blank for surface mount (surface mount is only available in 100% direct.)

## Available Finishes

### Standard

	01	White	RAL #9003
	02	Black	RAL #9011
	03	Silver	RAL #9022
	04	Crystal White	RAL #9010
	05	Natural Aluminum	RAL #7035
	06	Hampden	RAL #9001
	07	London	RAL #7044





### Metropolitan

	08	Urban Native	RAL #8025
	09	Military Green	RAL #6011
	10	Carmin	RAL #8028
	11	Chocolate Spice	RAL #8017
	12	Asher Grey	RAL #7004
	13	Tech Grey	RAL #7016
	14	Slate	RAL #7031
	15	Mason	RAL #7039

### Vibrant

	16	Violet Dreams	RAL #4006
	17	Sangria Sunset	RAL #2004
	18	Deep Pink	RAL #4010
	19	Ruby Red	RAL #3027
	20	Island Skye	RAL #6027
	21	Sophia	RAL #5015
	22	Antique Spring	RAL #6019
	23	Daisy	RAL #1018
	24	Gun Metal	RAL #7024

## Controls

Smart Sensors	Protocol	Compatible Networks	Occupancy	Daylight	Temperature Reporting	Communication to Luminaire
	Enlighted RF	Enlighted RF	Integrated	Integrated	Yes	Wireless
	EcoSystem	Quantum, Energi Savr Node, Energi TriPak	Enabled	Enabled	No	Wired
	Lutron Clear Connect*	Lutron Vive System Network	Enabled	Enabled	No	Wireless
	ZigBee HA	Philips	Enabled	Enabled	No	Wired

Controls



Controls Installed on the Fixture



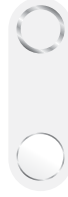
**FCJS-010**  
Individual  
Fixture Control

Fixture Will be Shipped LUTRON VIVE Enabled with LUTRON FCJS-010 0-10V Control Module Installed on the Fixture. Fixtures will be compatible with Lutron FC-SENSOR Occupancy/Daylight Sensor or FC-VSENSOR Vacancy/Daylight Sensor which can be Added in the Field for Remote Mounting. Fixture May be Controlled with any Vive control systems. Fixtures must be ordered with a 0-10V. Driver.



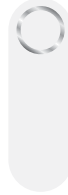
**FCJS-ECO**  
Individual  
Fixture Control

Fixture Will be Shipped LUTRON VIVE Enabled with LUTRON FCJS-ECO EcoSystem Control Module Control Module Installed on the Fixture. Fixtures will be compatible with Lutron FC-SENSOR Occupancy/Daylight Sensor or FC-VSENSOR Vacancy/Daylight Sensor which can be Added in the Field for Remote Mounting. Fixture May be Controlled with any Vive control systems. Fixtures must be ordered with a Lutron Driver.



**DFCSJ-OEM-OCC**

Fixture Will be Shipped LUTRON VIVE Enabled with DFCSJ-OEM-OCC\* Vive Integral Fixture Control (with Sensing) Installed on the Fixture. Fixture May be Controlled with any Vive control systems. Fixtures must be ordered with a DMX or Lutron EcoSystem Driver



**DFCSJ-OEM-RF**

Fixture Will be Shipped LUTRON VIVE Enabled with LUTRON DFCSJ-OEM-RF\* Vive Integral Fixture Control (RF Only) Installed on the Fixture. Fixture May be Controlled with any Vive control systems. Fixtures must be ordered with a DMX or Lutron EcoSystem Driver.

Controls Provided by Lutron



Vive Wireless Hub

DayLight  
Sensor

Ceiling Mount  
Occupancy/Daylight  
Sensor

Ceiling Mount  
Occupancy Sensor

Pico  
Remote

Wall Mount  
Switch

Wall Mount  
Occupancy Sensor

Lutron App



Fixture will be shipped with Leviton ZL027-N0W power control module installed on the fixture. Fixtures will be compatible with Leviton ZL00J-D0W sensor control module which can be added in the field for remote mounting. Fixture must be controlled with Leviton Intellect Keypad Room Controller, or Leviton Neuron App.



**ZL027-N0W**  
Power control module



**ZL00J-D0W**  
Sensor control module

Leviton Keypad



**ZLDNK-1W**



**ZLDNK-2W**



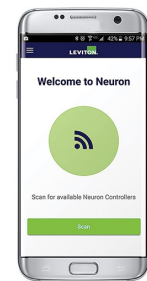
**ZLDNK-4W**



**ZLDNK-8W**

Intellect™ Keypad Room  
Controller (Required)

Leviton App



Neuron App

## Controls



Philips EasySense sensors provide luminaire-level control with Occupancy sensing, Daylight harvesting, and Field task tuning.

### Controls Installed on the Fixture



#### PHILIPS-XSR + SNS200

Fixture will be Shipped with EasySense SNS200 Sensor installed and PHILIPS-XSR driver. Fixture May Only be Controlled with Philips Field App or Wireless Switches.



#### SRB + SNS200

Fixture Will be Shipped with EasySense SNS200 Sensor installed and PHILIPS SRB Bridge. Fixture May Only be Controlled with Philips Field App or Wireless Switches or any 0-10V. Wall Box Dimmer.



### Controls Provided by Philips



ZBT-S1AWH



ZBT-S2AWH

Illumra Wireless Switches



#### PHILIPS-XSR + SNS200-CMP

Fixture will be Shipped Sensor Ready with PHILIPS-XSR driver and EasySense SNS200-CMP Sensor which is Included to be Remote Mounted. Fixture May Only be Controlled with Philips Field App or Wireless Switches



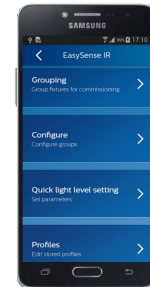
#### SRB + SNS200-CMP

Fixture Will be Shipped Sensor Ready with PHILIPS SRB Bridge and EasySense SNS200-CMP Sensor which is Included to be Remote Mounted. Fixture May Only be Controlled with Philips Field App or Wireless Switches or any 0-10V. Wall Box Dimmer.





#### SRB

Fixture will be Shipped Sensor Ready with SRB Bridge. Fixture will be Compatible with EasySense Sensor SNS200-CMP which can be Added in the Field for Remote Mounting. Fixture May Only be Controlled with Philips Field App or Wireless Switches or any 0-10V. Wall Box Dimmer.



Philips Field App

Compatible Dimmers

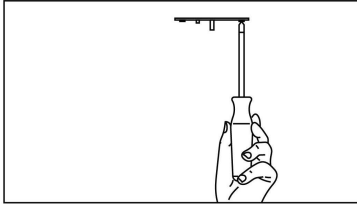
MFG	Triac	ELV	0-10
	TG-600P LG-600P TGCL-153P DV-600P DVCL-153P S-603PG CT-103P S-600P	DVELV-303P SELV-300P MAELV-600 FAELV-500	NTSTV NFTV DVSTV
		6161 6633-P 6683 6631-2 IPI06-1LZ	IPE04 VPE06-1LZ IP710-DLZ

## COLOR TEMPERATURE GUIDE

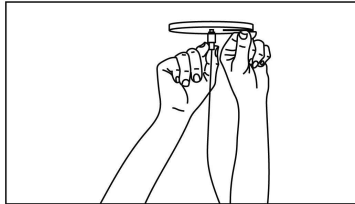


## Pendant Installation

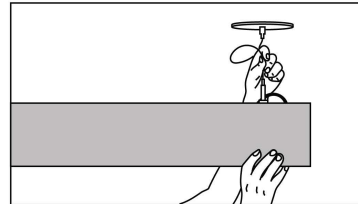
A simple design and adjustable components provide a flexible and hassle-free experience when installing the Continuum Series™.



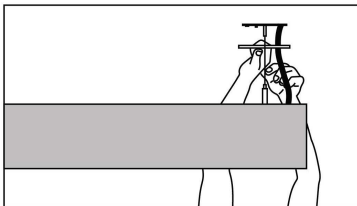
**Step 1:** Secure cross brackets to junction boxes for both power and non power mounting points.



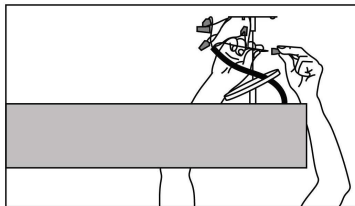
**Step 2:** Secure canopy with power canopy coupler (Power Feed Mount) & secure canopy with cable terminal (Non Power Feed Mount).



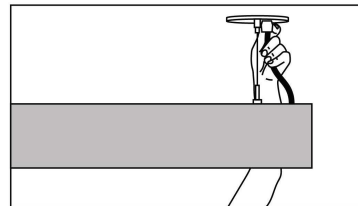
**Step 3:** Feed aircraft cable into cable grippers, adjust height and level luminaire.



**Step 4:** Unscrew outer coupler to allow access to junction box. Feed power cord through canopy.



**Step 5:** Secure canopy back in place with outer coupler.



**Step 6:** Snap strain relief around power cord. Press into canopy.