



WARNING:

Save these instructions for future reference. Risk of fire or electric shock. Installation requires expertise in LED lighting fixture electrical systems. If unqualified, do not attempt installation—contact a certified electrician.

BEFORE YOU BEGIN

- Ensure power is disconnected by turning off the circuit breaker or removing the fuse at the fuse box.
- Read and follow all instructions in numerical order during assembly.
- This lighting fixture must be installed by a qualified electrician.
- All electrical connections must comply with local and National Electrical Code (NEC) or Canadian Electrical Code (CEC) standards.

Estimated Assembly Time: 20 minutes

STEP 1

Press the wire restraint to adjust the desired length of the cable.

STEP 2

Use CSA or UL-certified wire connectors suitable for the gauge, type, and number of conductors and prepare the wired connection.

STEP 3

Attach the junction box grounding wire (green or bare copper) and the bare copper wire from the fixture together.

Wiring

- Connect the black wire (L) from the junction box to the black wire (L) from the fixture.
- Connect the white wire (N) from the junction box to the white wire (N) from the fixture.
- Connect the green wire/bare copper (G) from the junction box to the green wire/bare copper (G) from the fixture.

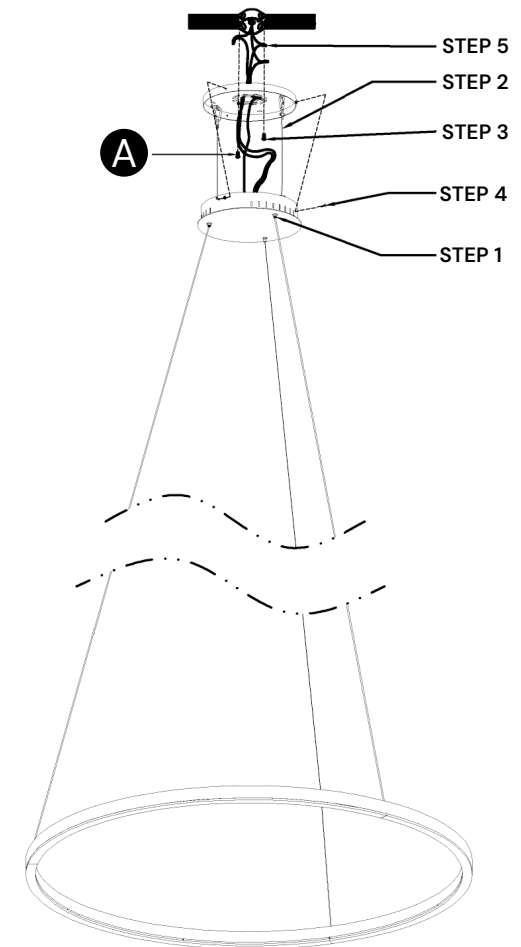
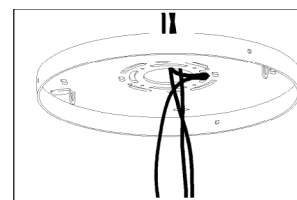
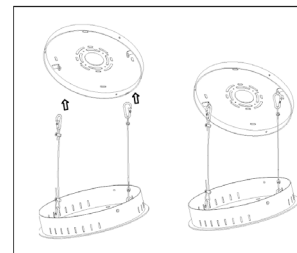
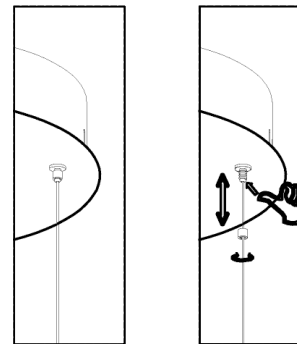
If no ground wire is present in the junction box, secure the fixture's bare copper wire to the green ground screw on the crossbar.

STEP 4

Double-check all electrical connections to ensure they are secure and properly insulated. Verify that the ground wire is securely connected and all wire connectors are tightened.

STEP 5

Carefully tuck all wires into the J-box while attaching the canopy. Ensure the wires are arranged neatly to avoid pinching or damage during installation. Secure the canopy in place according to the fixture's mounting instructions.

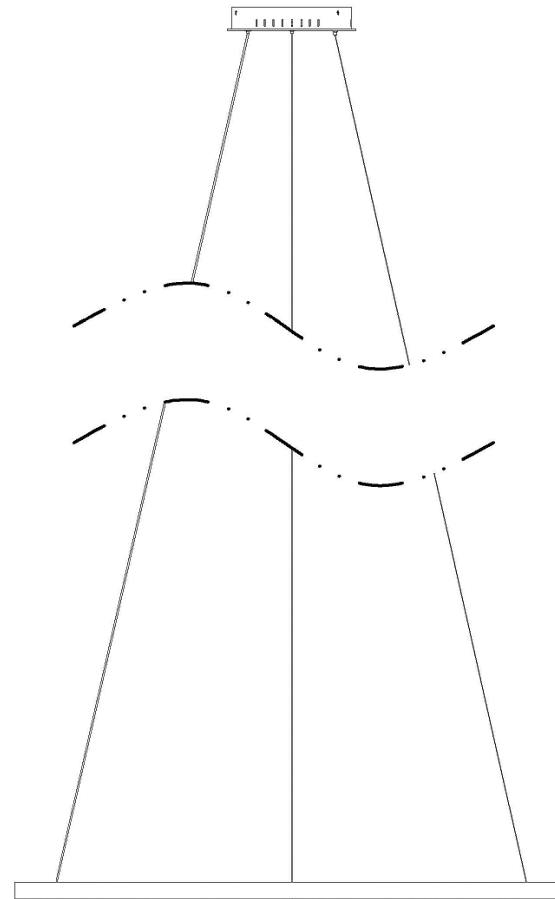
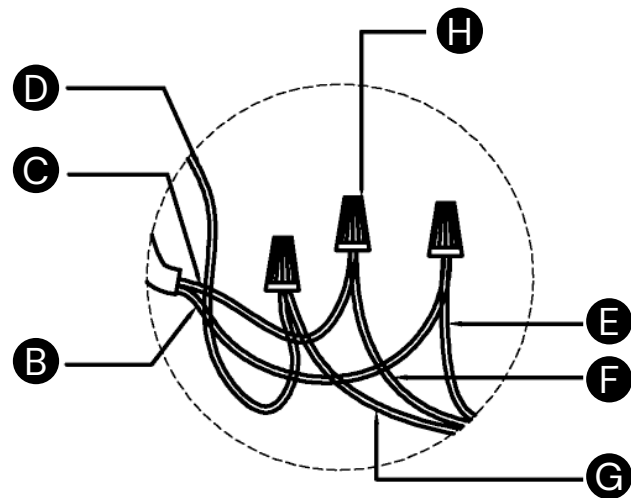




WARNING:

Save these instructions for future reference. Risk of fire or electric shock. Installation requires expertise in LED lighting fixture electrical systems. If unqualified, do not attempt installation—contact a certified electrician.

- Ⓐ Outlet Box screw x 2
- Ⓑ Black wire (L) from Junction Box
- Ⓒ White wire (N) from Junction Box
- Ⓓ Green wire/Bare copper (G) from Junction Box
- Ⓔ Black wire (L) from fixture
- Ⓕ White wire (N) from fixture
- Ⓖ Green wire/Bare copper from fixture
- Ⓗ Wire connector x 3



INSTALLATION COMPLETED

Tools Required (Not Included)

- Flathead screwdriver
- Phillips screwdriver
- Pliers
- Electrical tape
- Wire cutters

Optional Helpful Tools (Not Included):

- Wire strippers
- Ladder