

Project Name:

Type:

Quantity:

Alcon 12265 Modern Color Temperature Selectable Square LED Pendant

FIXTURE SPECIFICATIONS

INTENDED USE

Our ultra-modern LED square light fixture features a striking design. With a center ring encompassed by a square, this made in the USA pendant, provides purposeful lighting that is ideal for use in commercial, hospitality or residential spaces.

FEATURES

Construction: Aluminum frame hung by iron canopy

Lens: Glare-free frosted acrylic

Mounting: 10' Adjustable Aircraft Cable/Power Cord

Beam Spread: 120°

Color Temperature Switch: Capable of switching color temperatures from 3000K 3500K 4000K

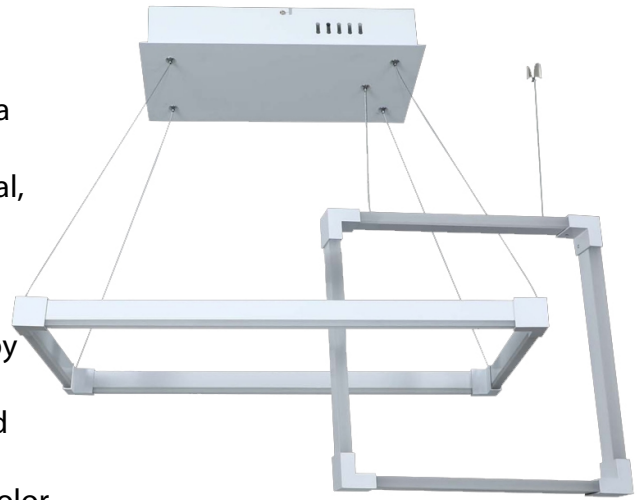
Voltage: 100-277V

Life: 50,000 Hours

Operating Temperature: -40°F to 122°F

Listings: cULus certified, FCC, Made in America

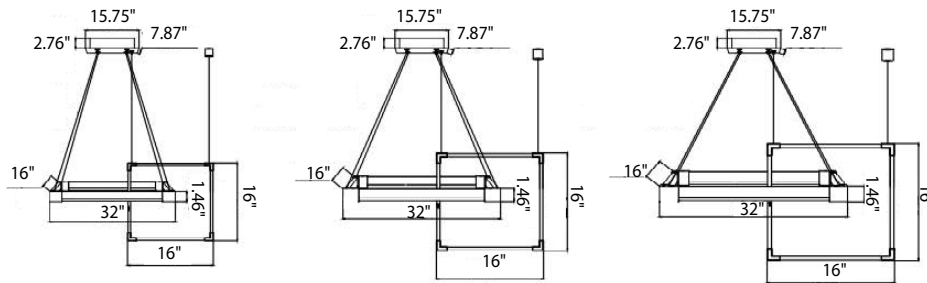
Warranty: 5 Years Carefree for Parts & Components (Labor Not Included)



Smart Life App for Tunable White available on [iOS](#) and [Android](#)



Tunable White Wall Switch Included



ORDERING INFORMATION Example: (12264-32-A-CTS-BK)

Model	Size Wattage Lumen	Style	Color Temperature	Dimming Driver	Finish	Options
12264	16 16" x 32" + 16" x 16" 60W 5100 L	A Surface Mount Driver	CTS Color Temp Switch <small>Standard</small> (3K/35K/4K) TW^{1,2} Tunable White from 3K-4K Dimmable via Wall Switch / App	010 0-10V Dimming (100-277V) <small>Standard</small> TRI TRIAC (120-277V) (Blank) Not Required for Tunable White	BK Black SL Silver WH White BR Bronze	REM5 5W Remote Emergency Back-Up Battery REM10 10W Remote Emergency Back-Up Battery REM17 17W Remote Emergency Back-Up Battery
	24 24" x 48" + 24" x 24" 100W 8500 L	B Remote Driver				
	30 30" x 60" + 32" x 32" 120W 10200 L					

¹ Includes Tunable White Wall Switch. Required for use.
² Dimming Driver not required for Tunable White.