

Project Name: _____ Type: _____ Quantity: _____

INTENDED USE & FEATURES

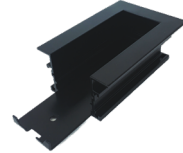
Designed for H-Type One and Two-Circuit Track Lighting Channels, this recessed track housing enables a flush installation into any ceiling style. Its extruded aluminum housing integrates seamlessly into drywall or suspended ceilings, providing a clean, modern look. Installation requirements vary by ceiling type, and additional framing may be needed for hard ceilings. Mounting hardware is included, along with spacers for 4' and 8' housings to accommodate single or two-circuit track thickness.



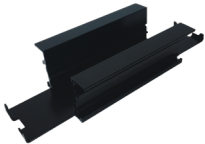
Dead End



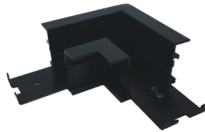
End Feed



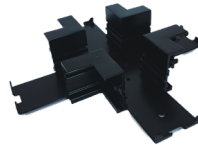
Linear Connector



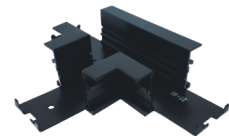
L Connector



X Connector



T Connector



ORDERING INFORMATION Example:

Model	Length	Finish
13000-RH Recessed Housing	4 4 feet 8 8 feet	WH White BK Black

Model	Connectors	Finish
13000-RH Accessories	EF End Feed DE Dead End LC Linear L L-Shape T T-Shape X X-Shape	WH White BK Black

COMPATIBLE ITEMS

Model	Circuit	Length	Finish
13000-TC Track Channel	1 One	2 2 feet	WH White
	2 Two	4 4 feet	BK Black
		6 6 feet	
		8 8 feet	
		12 12 feet	

Model	Connectors	Circuit	Finish
13000 Accessories	LE Live-End	1 One	WH White
	MC Mini	2 Two	BK Black
	SC Straight		
	L L-Shape		
	T T-Shape		
	X X-Shape		

Straight Connector



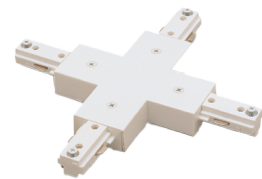
Joins two track channels in a straight line. May be used as an electric feed point.

Mini Connector



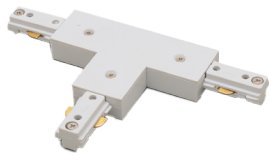
Joins two track channels end to end.

X-Connector



Joins four track channels in a perpendicular fashion. May be used as an electric feed point.

T-Connector



Joins three track channels. May be used as an electric feed point.

Live End



Power feed to track at end of channel. Comes with standard 1/2" knock out.

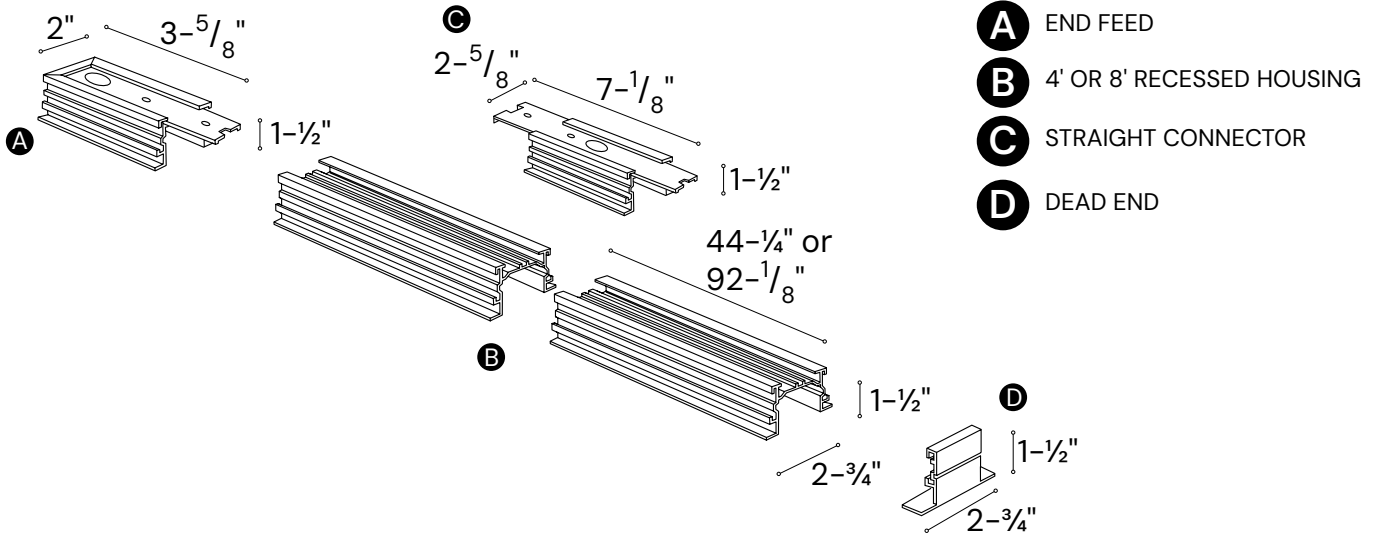
L-Connector



Joins two track channels in a perpendicular fashion. May be used as an electric feed point.

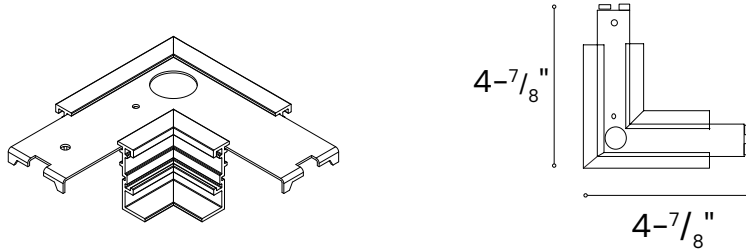
LINE DRAWINGS

(Housing)

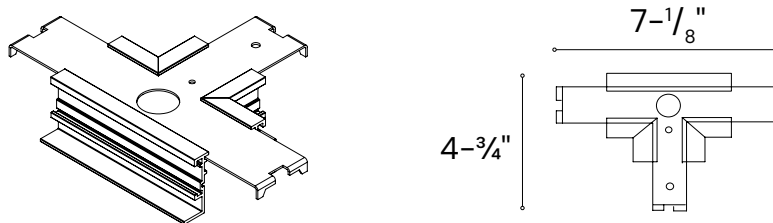


(Recessed Accessories)

L Connector



T Connector



X Connector

