

Project Name: \_\_\_\_\_ Type: \_\_\_\_\_ Quantity: \_\_\_\_\_

### INTENDED USE

Alcon Lighting builds premium lighting products to specification for commercial, hospitality, healthcare, and residential projects. Our recessed J-Box LED Downlights come in both round and square and are available in 4", 6", 8", and 10" sizes with up to 40W of power. Featuring an innovative design, the junction box and trim provide increased flexibility. Installation is a breeze thanks to the adjustable butterfly clips, allowing for an easy fit. The downlight's integral junction box eliminates the need for traditional recessed housing, enabling direct ceiling mounting for new constructions. Engineered specifically for recessed applications, these downlights are ideal for commercial and public spaces, elegantly enhancing environments such as shopping malls, hospitals, airports, hotel lobbies, and more.



### FEATURES

- Construction:** Aluminum
- Mounting:** Recessed with adjustable butterfly clips and built-in junction box.
- Color temperature:** CCT Adjustable
- Wattage:** Wattage Selectable
- CRI:** 80+
- Voltage:** 120-347V (0-10V Dim)
- Driver:** 1-10V (Dims down to 10%)
- Warranty:** 5 years carefree for parts & components (Labor not included)
- Listings:** cULus listed for damp locations, Energy Star Listed, Tested to IESNA LM-79 and LM-80, IC-Rated

Size	Lumens			Type
4", 6", 8"	1500lm 20W	1170lm 15W	800lm 10W	IC-Rated
4", 6", 8", 10"	3200lm 40W	2890lm 34W	2430lm 27W	Non-IC

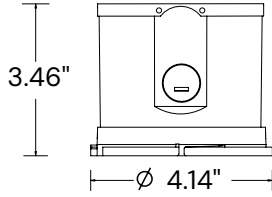


### ORDERING INFORMATION Example:

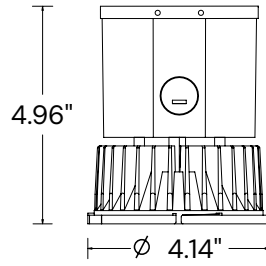
Model	Size   Shape	Optics	Wattage   CCT	Finish	Optional Housing	Options
<b>14123</b>	<b>4R</b> 4 Inches Round	<b>Blank</b> Downlight	<b>20-35<sup>2</sup></b> 20W 30/35/40K	<b>WH<sup>4</sup></b> White	<b>F<sup>7</sup></b> New Construction Frame Kit	<b>EM8<sup>8</sup></b> 8W External Emergency Battery
	<b>6R</b> 6 Inches Round	<b>WW<sup>1</sup></b> Wall Wash	<b>20-50<sup>2</sup></b> 20W 30/40/50K	<b>HZ<sup>3</sup></b> Haze	<b>FJ<sup>7</sup></b> New Construction Frame Kit With J-Box	<b>EM25<sup>9</sup></b> 25W External Emergency Battery
	<b>8R</b> 8 Inches Round		<b>40-35<sup>3</sup></b> 40W 30/35/40K	<b>RS<sup>6</sup></b> Rosé		
	<b>10R</b> 10 Inches Round					
	<b>4S</b> 4 Inches Square					
	<b>6S</b> 6 Inches Square					

<sup>1</sup> Not available in sizes 8" or 10".  
<sup>2</sup> Not available in 10".  
<sup>3</sup> Available in Non IC-Rated only.  
<sup>4</sup> Available in white ring with a haze reflector.  
<sup>5</sup> Only available in 4", 6", and 8" Round Downlight (Not available in Wall Wash).  
<sup>6</sup> Only available in 4" and 6" Round Downlight (Not available in Wall Wash).  
<sup>7</sup> Not available in 10". See page 4 for New Construction Frame Kits further information.  
<sup>8</sup> Available for 20W and 40W. See further information on page 3.  
<sup>9</sup> Available for 40W only.

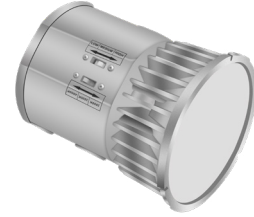
## ENGINE



20W IC-Rated



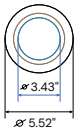
40W Non IC-Rated



## TRIM DIMENSIONS

### Round downlight Trims

4"



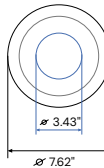
White Ring Haze reflector

All Haze

All Rosé

Mounting Diameters: 4.7"-5.2"

6"



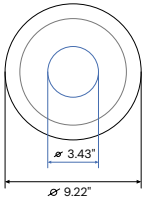
White Ring Haze reflector

All Haze

All Rosé

Mounting Diameters: 6"-7.3"

8"

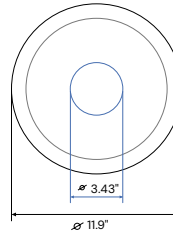


White Ring Haze reflector

All Haze

Mounting Diameters: 7.4"-8.9"

10"

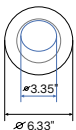


White Ring Haze reflector

Mounting Diameters: 9.5"-10.8"

### Round Wall Wash Trims

4"

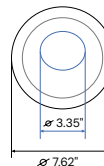


White Ring Haze reflector

Tilt: 15°

Mounting Diameters: 5.3"-6"

6"



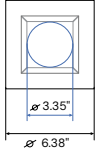
White Ring Haze reflector

Tilt: 15°

Mounting Diameters: 6"-7.3"

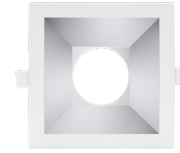
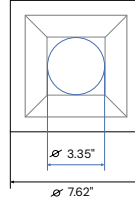
## Square Downlight Trims

4"



Mounting Diameters: 5.3"-6"  
White Trim  
(Haze reflector)

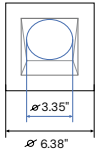
6"



Mounting Diameters: 6"-7.3"  
White Trim  
(Haze reflector)

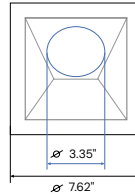
## Square Wall Wash Trims

4"



Tilt: 15°  
Mounting Diameters: 5.3"-6"  
White Trim  
(Haze reflector)

6"



Tilt: 15°  
Mounting Diameters: 6"- 7.3"  
White Trim  
(Haze reflector)

## EMERGENCY BATTERY

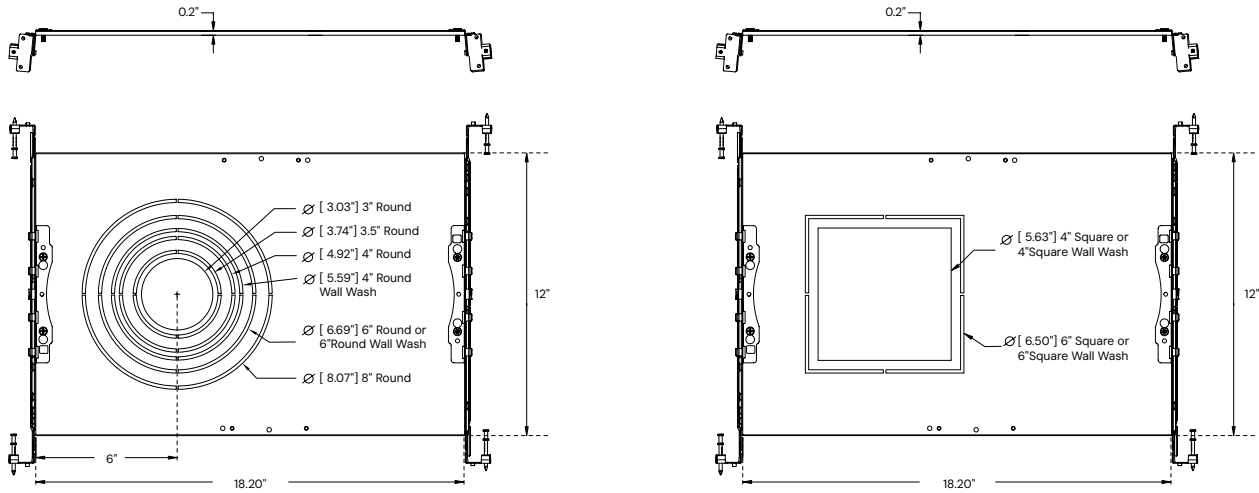
Fixture Efficacy	Lumen Output
80 lm/W	640 lm



The optional high-voltage 8W emergency feature ensures reliable lighting during power outages. When AC power fails, it instantly switches to emergency mode, providing illumination for up to 120 minutes. Once AC power is restored, it automatically returns to charging mode, meeting critical life-safety lighting requirements.

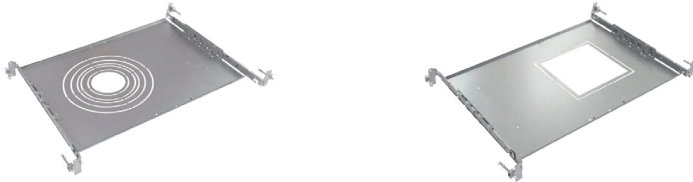
## OPTIONAL NEW CONSTRUCTION FRAME KITS



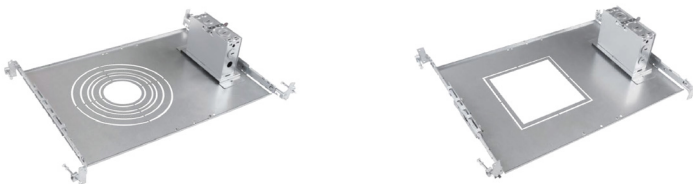


Snap cut-out sections adapt to fixture size.

### New Construction Frame Kits



### New Construction Frame Kits with J-box



### EXTERNAL EMERGENCY BATTERY

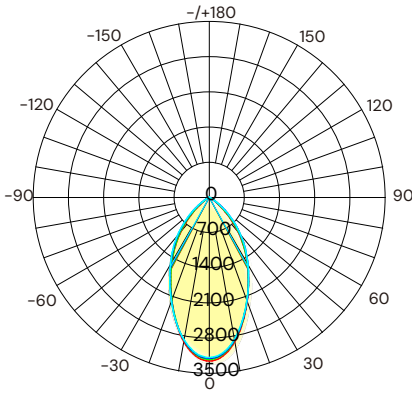
Fixture Efficacy	Lumen Output
80 lm/W	640 lm



The optional high-voltage 8W emergency feature guarantees dependable lighting during power outages. In the event of AC power failure, it immediately switches to emergency mode, delivering illumination for up to 120 minutes. When AC power is restored, it seamlessly transitions back to charging mode, ensuring compliance with critical life-safety lighting standards.

## PHOTOMETRY

### 6" 40W Round Trim



AVERAGE BEAM ANGLE(50%):  
57.4°

Test Number: CP6-D40W-40T Lumens: 3328.0 Lm  
 Watts: 40 W  
 LPW: 83.2 Lm/W  
 CCT: 4000K

UNIT: cd  
 CO/180,56.4°  
 C30/210,56.9°  
 C60/240,57.9°  
 C90/270,58.4°

Zonal Flux Diagram

Y	C0	C45	C90	C135	C180
10	2916	2896	2871	2857	2912
20	2201	2209	2188	2161	2186
30	1521	1544	1542	1506	1498
40	891.0	956.2	972.7	929.2	869.3
50	335.4	424.5	441.2	395.6	321.0
60	58.83	91.82	97.54	78.63	54.01
70	3.285	2.050	1.504	1.915	3.235
80	1.606	0.8562	0.5011	0.8066	1.591
90	0.1094	0.0676	0.0949	0.0811	0.0721
100	0.0902	0.0812	0.0857	0.0992	0.0993
110	0.1532	0.2302	0.2280	0.2212	0.1986
120	0.5046	0.6317	0.6711	0.6273	0.5778
130	1.262	1.372	1.496	1.403	1.359
140	2.366	2.405	2.542	2.450	2.455
150	3.683	3.717	3.809	3.735	3.735
160	5.157	5.110	5.117	5.088	5.184
170	6.245	6.183	6.145	6.160	6.273
180	6.732	6.710	6.593	6.620	6.755
DEG	LUMINOUS INTENSITY:cd				

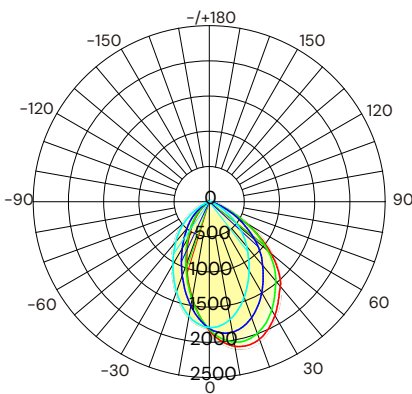
Zonal Lumens

Y	φ total
0-10	289.3
10-20	997.9
20-30	1840
30-40	2601
40-50	3101
50-60	3290
60-70	3317
70-80	3318
80-90	3319
90-100	3319
100-110	3319
110-120	3320
120-130	3320
130-140	3322
140-150	3324
150-160	3326
160-170	3327
170-180	3328
DEG	UNIT: lm

Luminance cd/(m2)

G(DEG)	CO/180	C90/270
85	742	162
80	524	163
75	497	189
70	544	249
65	1661	3557
60	6661	11045
55	15820	22953
50	29545	38863
45	47042	55891

### 6" 40W Round Wall Wash



AVERAGE BEAM ANGLE(50%): 71.0°

Test Number: CP6-D40W-30W-C Lumens: 2949.1 Lm  
 Watts: 40 W  
 LPW: 73.73 Lm/W  
 CCT: 3000K

UNIT: cd  
 CO/180,69.2°  
 C30/210,70.4°  
 C60/240,72.4°  
 C90/270,72.2°

Zonal Flux Diagram

Y	C0	C45	C90	C135	C180
10	2085	1962	1700	1461	1397
20	2080	1892	1449	1069	944.4
30	1866	1658	1132	716.4	584.0
40	1572	1343	828.3	446.7	318.6
50	1152	1001	540.1	222.7	107.6
60	593.4	562.8	253.7	36.59	12.99
70	169.5	186.5	59.76	4.875	5.799
80	4.680	16.81	1.576	1.973	2.586
90	0.0996	0.0631	0.0831	0.1709	0.1311
100	0.0811	0.0677	0.1123	0.2708	0.3476
110	0.0812	0.1309	0.3018	0.6949	0.9297
120	0.2162	0.3294	0.7163	1.394	1.832
130	0.4958	0.6814	1.271	2.125	2.851
140	0.9914	1.173	1.857	2.832	3.771
150	1.650	1.822	2.520	3.504	4.325
160	2.502	2.603	3.201	3.991	4.613
170	3.422	3.432	3.765	4.225	4.744
180	4.216	4.104	4.000	4.054	4.230
DEG	LUMINOUS INTENSITY:cd				

Zonal Lumens

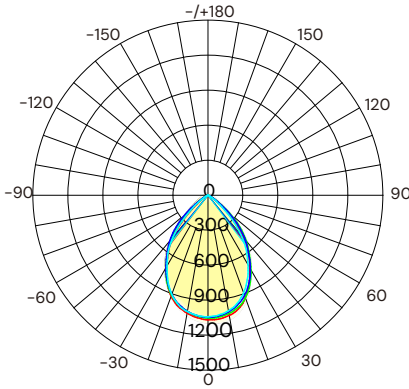
Y	φ total
0-10	166.4
10-20	610.3
20-30	1207
30-40	1830
40-50	2383
50-60	2750
60-70	2907
70-80	2940
80-90	2941
90-100	2941
100-110	2942
110-120	2942
120-130	2943
130-140	2945
140-150	2946
150-160	2948
160-170	2949
170-180	2949
DEG	UNIT: lm

Luminance cd/(m2)

G(DEG)	CO/180	C90/270
85	182	531
80	1526	514
75	14095	3272
70	28056	9893
65	45639	18782
60	67192	28730
55	86754	38552
50	101454	47569
45	111057	55165

## PHOTOMETRY

### 6" 20W Square Trim



AVERAGE BEAM ANGLE(50%):  
76.6°

Test Number: CP6-  
D20W-40E-S Lumens: 1515.4 Lm  
Watts: 20 W  
LPW: 75.77 Lm/W  
CCT: 4000K

UNIT:cd  
— C0/180,75.1°  
— C30/210,77.8°  
— C60/240,78.3°  
— C90/270,75.1°

Zonal Flux Diagram

Y	C0	C45	C90	C135	C180
10	1047	1022	1007	992.7	1027
20	939.2	932.1	893.4	892.4	922.1
30	719.9	739.1	687.3	709.4	711.5
40	471.7	497.7	440.1	477.0	457.8
50	170.8	280.1	158.0	250.7	159.6
60	32.27	62.15	30.20	46.44	33.23
70	2.699	4.711	3.380	4.018	3.231
80	1.543	2.277	2.065	2.620	1.965
90	0.1002	0.0711	0.1300	0.0681	0.1300
100	0.0406	0.0496	0.0406	0.0406	0.0451
110	0.0587	0.1195	0.1128	0.1015	0.1038
120	0.2476	0.3584	0.3114	0.3492	0.3024
130	0.6308	0.7486	0.6814	0.7350	0.7086
140	1.149	1.193	1.150	1.217	1.205
150	1.614	1.648	1.633	1.653	1.682
160	2.155	2.061	2.043	2.088	2.156
170	2.363	2.331	2.304	2.322	2.422
180	2.498	2.444	2.431	2.415	2.503
DEG	LUMINOUS INTENSITY:cd				

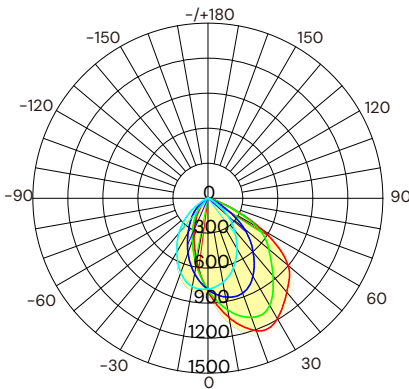
Zonal Lumens

Y	φ total
0-10	98.17
10-20	371.6
20-30	748.1
30-40	1122
40-50	1389
50-60	1490
60-70	1507
70-80	1510
80-90	1511
90-100	1511
100-110	1511
110-120	1512
120-130	1512
130-140	1513
140-150	1514
150-160	1515
160-170	1515
170-180	1515
DEG	UNIT: lm

Luminance cd/(m2)

G(DEG)	C0/180	C90/270
85	662	908
80	395	528
75	341	445
70	351	439
65	965	913
60	2869	2684
55	6050	5712
50	11807	10926
45	19770	18214

### 6" 20W Square Wall Wash



AVERAGE BEAM ANGLE(50%): 71.0°

Test Number: CP6-  
D20W-40W-S Lumens:  
1590.6 Lm  
Watts: 20 W  
LPW: 79.53 Lm/W  
CCT: 4000K

UNIT:cd  
— C0/180,65.4°  
— C30/210,68.8°  
— C60/240,72.5°  
— C90/270,77.0°

Zonal Flux Diagram

Y	C0	C45	C90	C135	C180
10	1038	919.6	732.9	585.3	554.5
20	1209	984.8	638.0	411.7	353.7
30	1192	930.7	494.7	267.4	210.7
40	1053	743.2	354.7	155.9	97.27
50	896.8	548.9	205.7	66.71	21.28
60	526.2	310.4	73.90	12.46	5.292
70	136.0	73.16	14.65	4.282	4.094
80	12.17	4.784	1.600	3.400	3.395
90	0.1674	0.0925	0.0768	0.1779	0.0947
100	0.0812	0.0812	0.1175	0.2143	0.3070
110	0.0631	0.0925	0.1760	0.5996	0.7989
120	1.081	0.1646	0.3880	1.220	1.633
130	0.1577	0.2909	0.6721	1.526	2.147
140	0.3513	0.4938	0.9789	1.914	2.359
150	0.6173	0.7667	1.276	2.081	2.534
160	0.9781	1.127	1.565	2.182	2.530
170	1.433	1.522	1.781	2.153	2.340
180	1.935	1.851	1.826	1.847	1.944
DEG	LUMINOUS INTENSITY:cd				

Zonal Lumens

Y	φ total
0-10	73.89
10-20	284.3
20-30	592.3
30-40	929.2
40-50	1235
50-60	1461
60-70	1563
70-80	1584
80-90	1586
90-100	1586
100-110	1586
110-120	1587
120-130	1588
130-140	1588
140-150	1589
150-160	1590
160-170	1590
170-180	1591
DEG	UNIT: lm

Luminance cd/(m2)

G(DEG)	C0/180	C90/270
85	373	694
80	3114	410
75	9473	779
70	17677	1904
65	31770	3741
60	46776	6569
55	57281	10368
50	62005	14225
45	61916	17780

## COMPATIBLE DIMMERS

	ALCON LIGHTING	LUTRON	LEVITON
0-10 V	<a href="#">2100</a> <a href="#">2101</a> <a href="#">2102</a>	Diva DDTV	IP-710-DL

## COLOR TEMPERATURE GUIDE

2700K	3000K	3500K	4000K	5000K
<b>WARM WHITE</b>	<b>SOFT WHITE GLOW</b>	<b>NEUTRAL GLOW</b>	<b>COOL WHITE GLOW</b>	<b>DAYLIGHT GLOW</b>
friendly personal intimate	soft warm pleasing	sociable inviting non-threatening	neat clean efficient	bright cool alert
HOMES LIBRARIES RESTAURANTS	HOMES HOTEL ROOMS LOBBIES RETAIL STORES	EXECUTIVE OFFICES RECEPTION AREAS SUPERMARKETS	OFFICES CLASSROOMS MASS MERCHANTISERS SHOWROOMS	GRAPHICS INDUSTRY HOSPITALS GALLERIES BEAUTY SALONS
X	✓	✓	✓	✓