



**CAUTION: Risk of Electric Shock.** READ ALL INSTRUCTIONS BEFORE INSTALLATION. Suitable for Damp location. Access above ceiling required. Suitable for suspended ceilings.

### Optional

2' x 2', 1' x 4', 2' x 4'

### UNPACKING

1. Unpack and carefully examine the product.
2. Report any damage and save all packing materials if any part(s) were damaged during shipping.
3. Do not attempt to use this apparatus if it is damaged.

### IMPORTANT SAFETY INFORMATION



**Read this entire manual to fully understand and safely use this product before installation**

1. Consult a qualified electrician to ensure correct branch circuit conductor.
2. The product should be installed and operated by a qualified electrician or technician in accordance with relevant local codes.
3. Risk of electric shock. Ensure that main power source is off when wiring or soldering the sections of the product.
4. Before installing this fixture or doing any maintenance, make sure to turn off the power supply at the circuit breaker or fuse box.
5. Check to make sure that all fixture connections have been properly made and the fixture is grounded to avoid potential electrical shocks.
6. Designed for use in AC110–277V/110–347V, 50/60 Hz, protected circuit.

### INCLUDED IN THIS BOX

- LED Luminaire
- Installation instruction

### INDICATOR STATUS

LED Indicators Status	EM Driver Status/Mode
Solid Red ON	System OK/ AC OK
None (LED OFF)	Normal working on EM mode
Flashing Red, 1s on/ 1s off (cycle)	Battery voltage is too low
Flashing Red, 0.3s on/ 0.3s off (cycle)	System NG: If battery not detected, check battery connection



**CAUTION: Risk of Electric Shock.** READ ALL INSTRUCTIONS BEFORE INSTALLATION. Suitable for Damp location. Access above ceiling required. Suitable for suspended ceilings.

### Assembly Instructions

#### Step 1

Bend J-Hook by 45° making it vertical to the rear cover of LED luminaire (Figure 1A). Then, bend the top part of J-Hook by 90° (Figure 1B). Repeat STEP 1 to other J-Hooks.

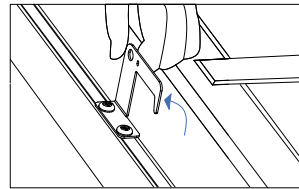


Figure 1A

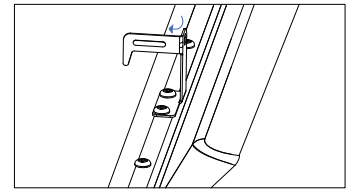


Figure 1B

#### Step 2

Turn off power, remove the ceiling panel, then place LED luminaire into the T-bar, ensure the LED luminaire is attached to the ceiling (Figure 2). J-Hook is for positioning only.

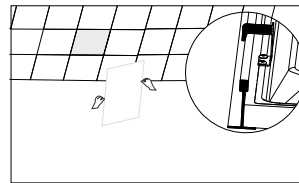


Figure 2

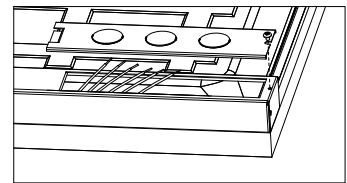


Figure 3

#### Step 3

Open the driver box (Figure 3) and trade size of conduit: 22.2mm dia.

#### Step 4

##### A. Connect AC Wires

Input L connects to the black wire of the luminaire, N connects to the white wire, the ground connects to the green wire.

##### B. Connect Dimmer

Compatible with 0-10V dimmer. The driver VIOLET (D+) to the dimmer +, and the driver PINK (D-) to the dimmer-.

##### C. Connect the wires with terminal cap as shown in wiring diagram (Figure 4).

Incoming insulated dimming conductors should have voltage rated at least equal to the branch voltage.

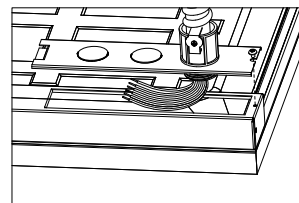


Figure 4

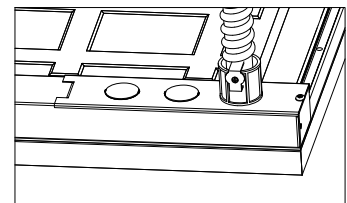


Figure 5

#### Step 5

Close the driver box and screw as shown in Figure 5.

### Wiring Diagram

