

Project Name: _____ Type: _____ Quantity: _____

[Shop Now](#)

FIXTURE SPECIFICATIONS

INTENDED USE

The half-moon dome LED pendant cylinder is perfect for commercial spaces, offering integrated LED drivers with over 80% efficiency to reduce energy loss and heat output, promoting sustainability. Its modular design, paired with high performance COB LED chips, ensures effective heat dissipation. This fixture also features tool-free interchangeable beam spreads, allowing it to adapt effortlessly to diverse lighting requirements.

FEATURES

- Construction: Durable die-cast aluminum with a powder-coated polyester finish
- Wattage: 12/18/25W selectable switch
- Lumens: 1140~2350lm
- Efficacy: 95lm/w
- Driver: 0-10V dims 10%
- Emergency Battery: External 90 min. w/ test switch and efficacy of 80 lm/w
- Color Temperature: 27, 30, 35, 40K
- Optics: 15, 24, 36, 60°
- Voltage: 120-277V
- CRI: 80+, 90+
- Life: 50,000 Hours
- Warranty: 5 Years carefree for parts & components (Labor not included)
- Listings: cULus listed for damp locations



Conduit or J-Box



ORDERING INFORMATION Example:

Model	Color Temp	Optics	Finish	Canopy	Pendant Mounting ¹	CRI	Options
12345	27K 2700K	15 15° Narrow Spot	WH White	Blank <small>Standard</small>	AC2	Blank <small>Standard</small> 80+	EMX8
	30K 3000K	24 24° Spot	BK Black	J-Box Mount	2' Adjustable Aircraft Cable		90+
	35K 3500K	36 36° Flood		C	4' Adjustable Aircraft Cable		EMX25
	40K 4000K	60 60° Wide Flood		Conduit Mount	AC8 8' Adjustable Aircraft Cable		25W External Emergency Battery
					ST2 ² 2' Stem		
					ST4 ² 4' Stem		
					ST8 ² 8' Stem		

¹ Mounting options are same color as fixture

² Tilt up to 30°

Alcon Lighting 12345 Architectural Half-Moon Dome LED Cylinder Pendant Light

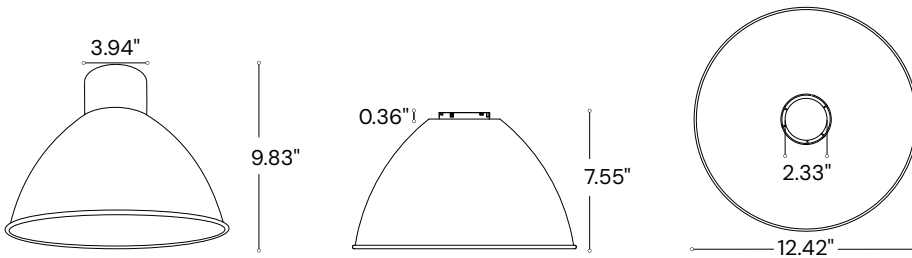
MOUNTING OPTIONS

J-Box Mount

Conduit Mount

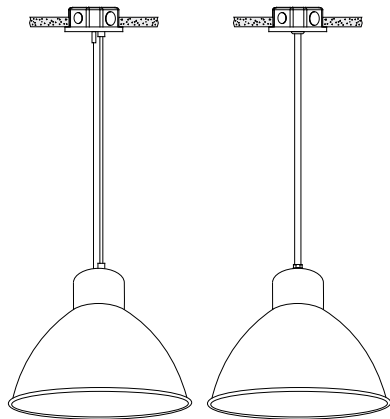


LINE DRAWINGS & DIMENSIONS



MOUNTING LOCATION

J-Box Mount



Cable

Stem

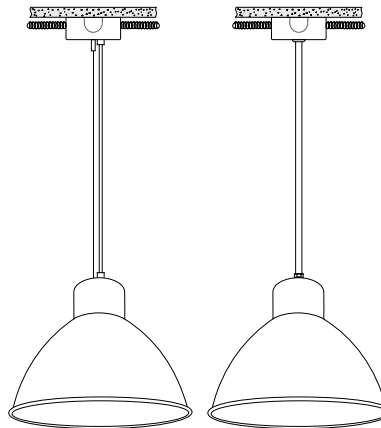
A 4.5" flat canopy is included to cover the junction box, along with a white or black aircraft cable in lengths of 2', 4', or 8' (nominal), which can be adjusted on-site as needed.

For pendant stem mounting, a steel stem with a diameter of 0.48" in the specified lengths of 2', 4', or 8' (nominal) is available in a white or black finish.

The junction box can be any of the following shapes:

- 3" octagon
- 4" octagon
- 4" round

Conduit Mount



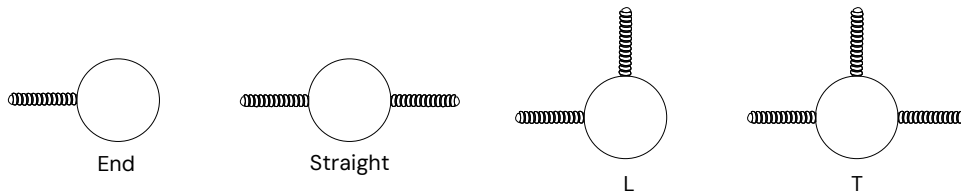
Cable

Stem

For the standard 4" octagonal junction box surface mounted, a round canopy with a diameter of 5.97" and a depth of 2.38" is provided. Features four key slots, one on each side, that can be configured to accommodate any ceiling layout using a 0.5" or 0.375" conduit.

- This deep canopy offers ample space for routing conduit from the junction box to the fixture.
- The conduit enters through one of the key slots, connecting seamlessly to the fixture within the canopy.
- These key slots enable flexible installation, accommodating various conduit routing configurations.

CONDUIT CONFIGURATIONS



End

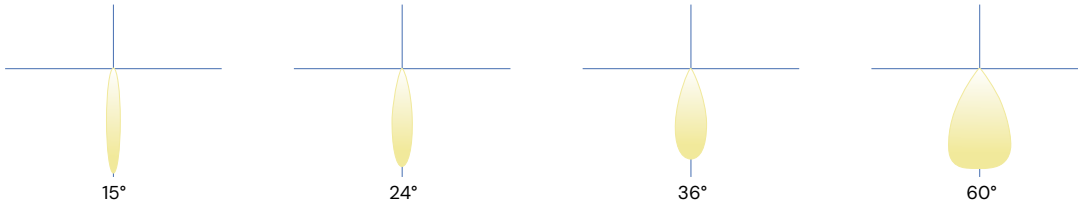
Straight

L

T

LIGHT DISTRIBUTION

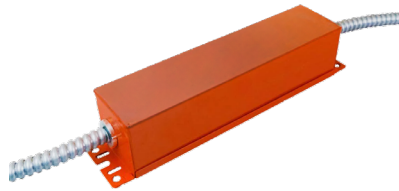
Four Beam Angle options



EXTERNAL EMERGENCY BATTERY



Canopy with Indicator

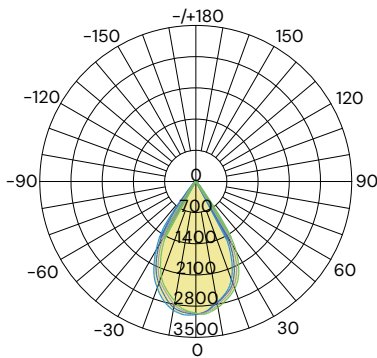


LED Emergency Driver with External Test Button

The 8W emergency backup battery delivers 640 lumens at 80 lm/W efficiency. In case of AC power failure, it automatically switches to emergency mode, ensuring at least 120 minutes of illumination. Upon power restoration, it seamlessly returns to charging, meeting essential life-safety lighting standards.

PHOTOMETRY

4"/ 3000K/ 60°



AVERAGE BEAM ANGLE (50%): 61.0°

Lumens: 2612.6 Lm
 Watts: 25 W
 LPW: 103.94 Lm/W
 CCT: 3000K

UNIT:cd
 — C0/180, 61.0°
 — C30/210, 61.1°
 — C60/240, 61.1°
 — C90/270, 60.7°

Zonal Flux Diagram

T	C0	C45	C90	C135	C180
10	2751	2786	2868	2917	2931
20	2335	2466	2558	2593	2538
30	1094	1535	1818	1905	1800
40	155.1	194.4	245.3	438.2	400.3
50	62.68	63.03	65.58	79.00	102.6
60	44.26	44.48	45.54	54.19	62.64
70	23.80	23.01	22.92	28.39	34.03
80	2.913	5.007	6.675	7.312	11.58
90	0.1544	0.1118	0.3414	0.4778	0.2661
100	0.0980	0.1167	0.1027	0.1260	0.1499
110	0.1725	0.2939	0.8678	0.2707	0.6863
120	0.3081	0.3082	0.3596	0.3502	0.7190
130	0.8022	0.6450	0.4290	0.4484	0.8034
140	2.066	1.785	1.408	1.243	1.589
150	3.714	3.274	2.851	2.718	3.120
160	5.316	4.917	4.461	4.184	4.698
170	6.381	6.205	6.044	5.930	6.233
180	6.788	6.806	6.652	6.657	6.797
DEG	LUMINOUS INTENSITY:cd				

Zonal Lumens

T	Φ total
0-10	275.7
10-20	1016
20-30	1941
30-40	2403
40-50	2499
50-60	2552
60-70	2587
70-80	2603
80-90	2605
90-100	2605
100-110	2605
110-120	2606
120-130	2606
130-140	2607
140-150	2609
150-160	2610
160-170	2612
170-180	2613
	UNIT: lm

Luminance cd/(m2)

G(DEG)	C0/180	C90/270
85	2079	6732
80	2892	6628
75	8458	9206
70	11997	11556
65	13945	13764
60	15263	15703
55	16203	17152
50	16813	17592
45	17695	27503

COMPATIBLE DIMMERS

	ALCON LIGHTING	LUTRON	LEVITON	legrand
0-10 V	2100 2101 2102	DVSTV NTSTV-DV	IP710	RH4FBL3PTC
TRIAC		MSCL-DP153M SCL-153P CTCL-153P CT-603PG DV603P DVCL153P	6683 6674	

COLOR TEMPERATURE GUIDE

2700K	3000K	3500K	4000K	5000K
WARM WHITE	SOFT WHITE GLOW	NEUTRAL GLOW	COOL WHITE GLOW	DAYLIGHT GLOW
friendly personal intimate	soft warm pleasing	sociable inviting non-threatening	neat clean efficient	bright cool alert
HOMES LIBRARIES RESTAURANTS	HOMES HOTEL ROOMS LOBBIES RETAIL STORES	EXECUTIVE OFFICES RECEPTION AREAS SUPERMARKETS	OFFICES CLASSROOMS MASS MERCHANDISERS SHOWROOMS	GRAPHICS INDUSTRY HOSPITALS GALLERIES BEAUTY SALONS
✓	✓	✓	✓	✗

Alcon Lighting 12345 Architectural Half-Moon Dome LED Cylinder Pendant Light