

FIXTURE SPECIFICATIONS

INTENDED USE

Our direct industrial lighting delivers high performance and versatility. This flat panel, high-bay light suits today's commercial building lobby, warehouse, and gymnasium. The product comes in standard lengths of 2 feet and 4 feet, available with a chain suspension, stem pendant mount or ceiling surface installation kit.

FEATURES

Construction: Die formed, cold-rolled, heavy gauge steel housing.

Lumens: Please see second page for lumen chart

Finish: Painted parts finished with high-gloss baked white enamel over rust inhibiting phosphate coating for maximum corrosion resistance

Life: 122,000 hours

Beam Spread: 25° x 40°

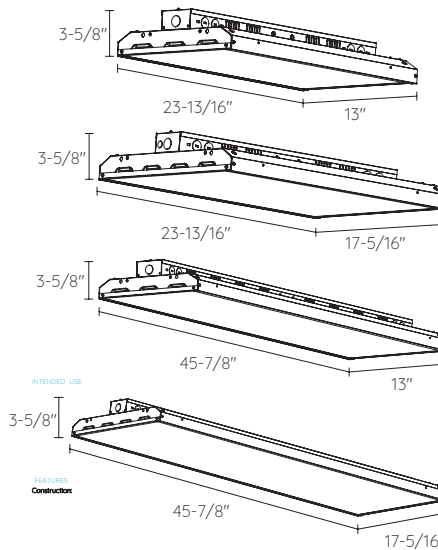
Operating Temperature: -4°F (-20°C) ~ 122°F (50°C)

Dimming control: 0-10V (10 ~ 100%)

CRI: 80+

Warranty: 5-Year Limited Warranty

Listings: UL/cUL Listed, Suitable for Damp Location, ARRA compliant (optional)



Specifications: 2FT (105-2, 130-2, 155-2, 170-2, 178-2)
Weight: 4.6lbs / 5.7kg

Specifications: 2FT (210-2)
Weight: 4.6lbs / 5.7kg

Specifications: 4FT (255-4, 300-4)
Weight: 17.8lbs / 8.1kg

Specifications: 4FT (400-4)
Weight: 17.8lbs / 8.1kg



ORDERING INFORMATION Example: (14141-255-4-35K-80-C-UNV)

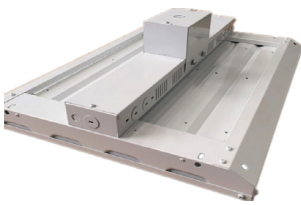
Model	Length Wattage	Color Temp	CRI	Mounting	Voltage	Options	
14141	105-2 2 Feet 105 Watt	35K 3500K	80	C Standard	UNV	EM8	ELCU-200
	130-2 2 Feet 130 Watt	40K 4000K	80+	40" Chain Kit	120-277V	Emergency Backup	Fail-to-on Emergency Lighting,
	155-2 2 Feet 155 Watt	50K 5000K	90 ¹	S	3 ²	Battery 8W (1296 lm)	UL924
	170-2 2 Feet 170 Watt		90+	Surface Mounting	347V	EM15	GLR
	178-2 2 Feet 178 Watt			ST24	4 ²	Emergency Backup	Internal fast-blow fuse
	210-2 2 Feet 210 Watt			24" Stem Pendant	480V	Battery 15W (2430 lm)	WG
	178-4 4 Feet 178 Watt			ST48		EM20 Emergency	Wire Guard
	255-4 4 Feet 255 Watt			48" Stem Pendant		Backup Battery 20W	CL
	300-4 4 Feet 300 Watt			STXX		(3240 lm)	Clear Lens
	400-4 4 Feet 400 Watt			Custom Length Stem Pendant Replace XX with Length in Inches.		EM25 Emergency Backup Battery 25W (4050 lm)	SP
					EMC	10kA/10kV Surge Protection	
					CEC compliant EM	MS	Motion Sensor
						DS	Daylight Harvesting
						Sensor	Sensor

¹ Lumen output is 20% lower
² EM options not available for these voltages

Alcon 14141 Cupertino Architectural LED High Bay Flat Panel Direct Light Troffer

LUMEN CHART

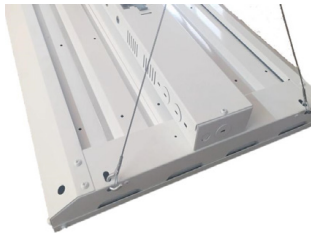
Wattage	No Lens Lumen	Clear Lens Lumen	Frosted Lens Lumen
105-2	15152 lm	14716 lm	14280 lm
130-2	18759 lm	18220 lm	17680 lm
155-2	22367 lm	21723 lm	21080 lm
170-2	24531 lm	23826 lm	23120 lm
210-2	30303 lm	29432 lm	28560 lm
255-4	36797 lm	35738 lm	34680 lm
300-4	43290 lm	42045 lm	40800 lm
400-4	57720 lm	56060 lm	54400 lm



ST24, ST48, STXX
(Stem Pendant
Hanger, 1/2" hub)



Chain Kit (Standard)
40" chain



ACXX (Cable Kit)



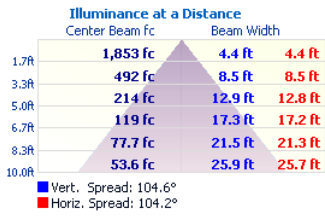
S
(Surface
Mounting)



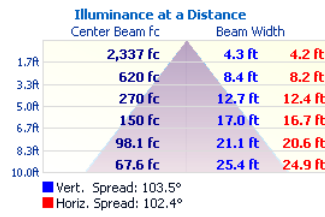
WG (Wire Guards)

PHOTOMETRICS

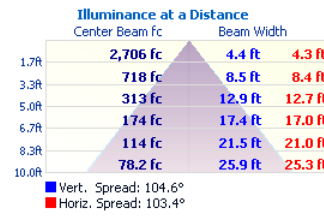
14141-105-2



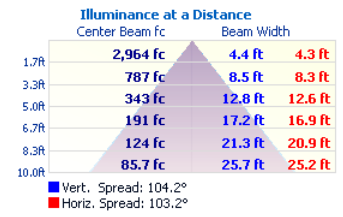
14141-130-2



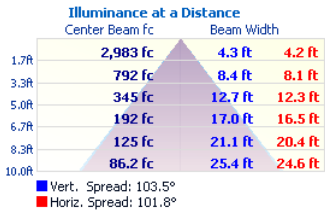
14141-155-2



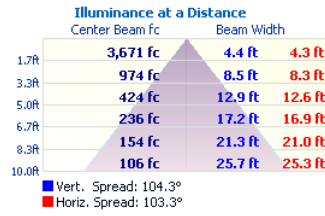
14141-170-2



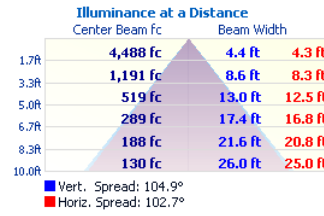
14141-178-2



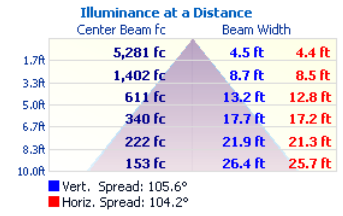
14141-210-2



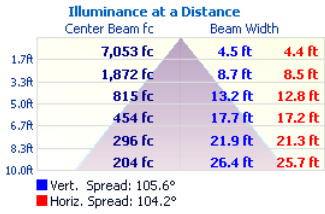
14141-255-4



14141-300-4



14141-400-4



COLOR TEMPERATURE GUIDE

2700K	3000K	3500K	4000K	5000K
WARM WHITE	SOFT WHITE GLOW	NEUTRAL GLOW	COOL WHITE GLOW	DAYLIGHT GLOW
friendly personal intimate	soft warm pleasing	sociable inviting non-threatening	neat clean efficient	bright cool alert
HOMES LIBRARIES RESTAURANTS	HOMES HOTEL ROOMS LOBBIES RETAIL STORES	EXECUTIVE OFFICES RECEPTION AREAS SUPERMARKETS	OFFICES CLASSROOMS MASS MERCHANTISERS SHOWROOMS	GRAPHICS INDUSTRY HOSPITALS GALLERIES BEAUTY SALONS
X	X	✓	✓	✓