

FIXTURE SPECIFICATIONS

Diecast in aluminum and capable of withstanding vehicular weight, our in-ground, landscape LED well light includes an open face cover to maximize light output with tempered glass lens and a faceplate to protect from nature's elements. This light is manufactured for almost any location, soil and concrete.

DETAILS

Dia 7.56" x W 7.56" x H 10" Construction: Cast Aluminum w/ PVC Sleeve

Installation: Rated for In-Ground Soil and Concrete Applications

Wire Length: 15"

Lens: Clear, Heat Resistant, Tempered Glass

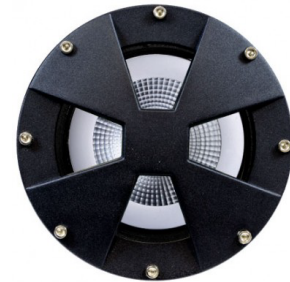
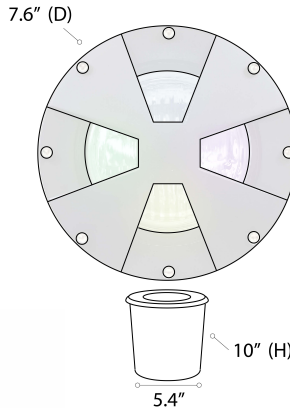
RGBW Controller: Bluetooth via Smart Life - Smart Living mobile app

(available for iOS and Android devices) **CRI:** 80+

Life: 35,000 Hours

Listing: ETL Approved for Wet Location

Lamp Type: PAR38 LED Included



Alcon Lighting 9098 Landscape 8-Inch LED Well Light



ORDERING INFORMATION: Example: (9098-RGBW-BK)

Model	Lamp Type	Color Temp	Finish
9098	RGBW RGBW 15W 1300 lms 120° Beam Spread 120V	(Blank) RGB + W (27-64K)	BK Black
	W-25 White 12.5W 1200 lms 25° Beam Spread 120-277V	27K 2700K	BR Bronze
	W-40 White 12.5W 1200 lms 40° Beam Spread 120-277V	30K 3000K	GR Gray
		40K 4000K	
		50K 5000K	