

# USER GUIDE



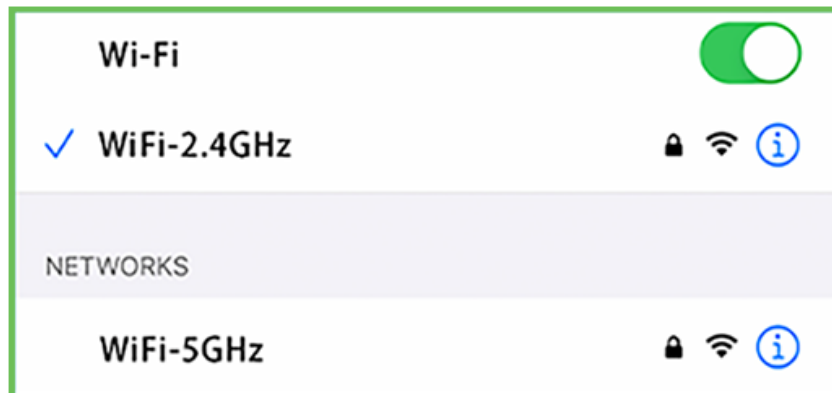
Download the Smart life App



**System Requirements**  
Minimum: IOS 9.3 or Android 4.4  
- Dedicated 2.4GHz Wifi Network -

## 2

Go to the WIFI settings and connect your phone to your 2.4GHz WIFI network.



## 3

Launch the App and tap Register for new accounts or log in for existing accounts.

**4**

Enter Mobile Number or E-Mail address,  
then tap Continue.

(A verification code will be sent to your  
email or Mobile Number.)

<

## Register

United States of America +1 >

Mobile Number/Email

Get Verification Code

**5**

Create a Password then tap Done.

<

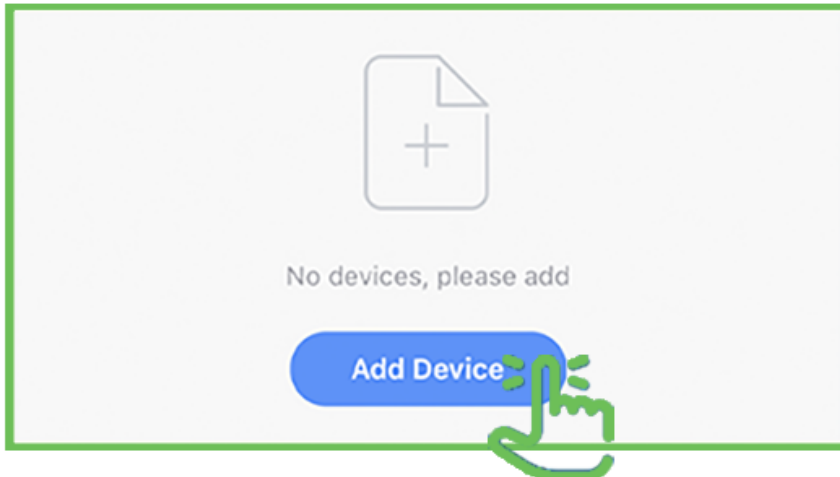
## Set Password

Passwords must have 6 to 20 characters, including letters and digits

Done

# Adding WIFI Devices

**6** Install and power On light(s) then tap Add Device.



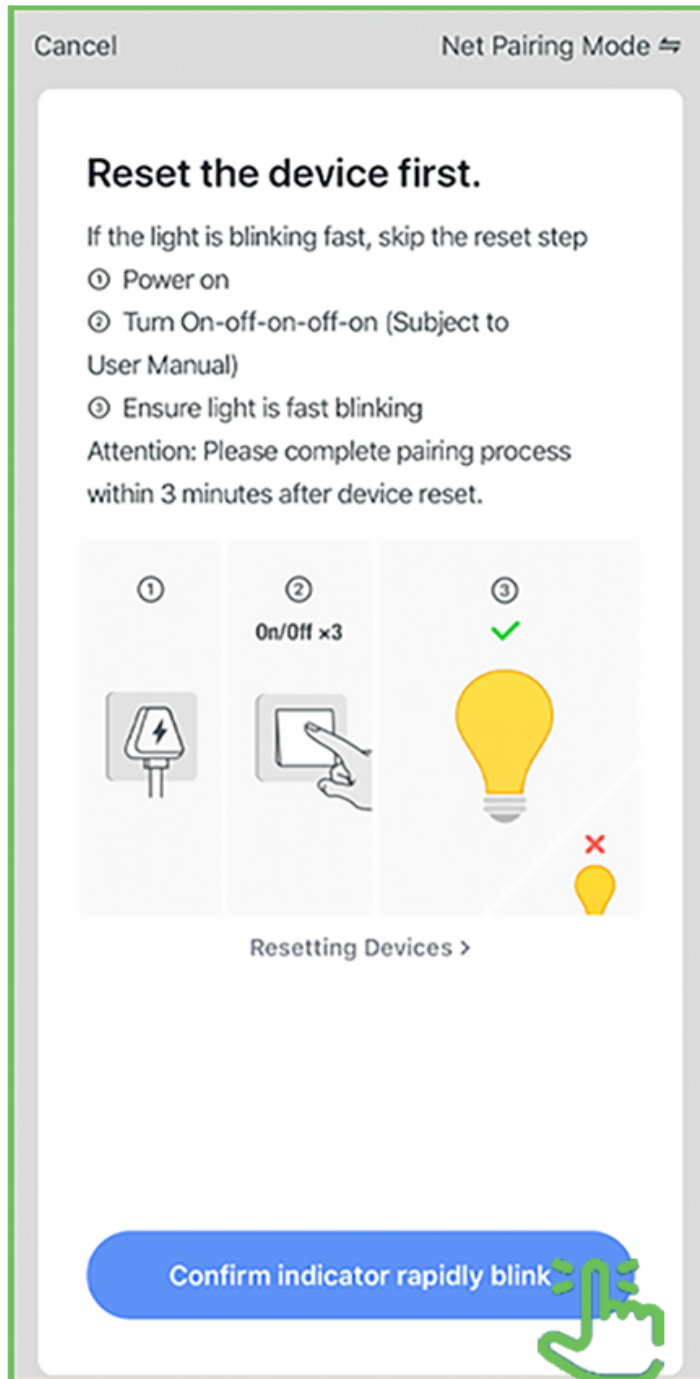
**7** Make sure you are connected to a 2.4GHz WiFi Network, then tap Lighting and then tap Lighting device



8

Power On the light(S) and make sure the light(S) is blinking, then tap Confirm.

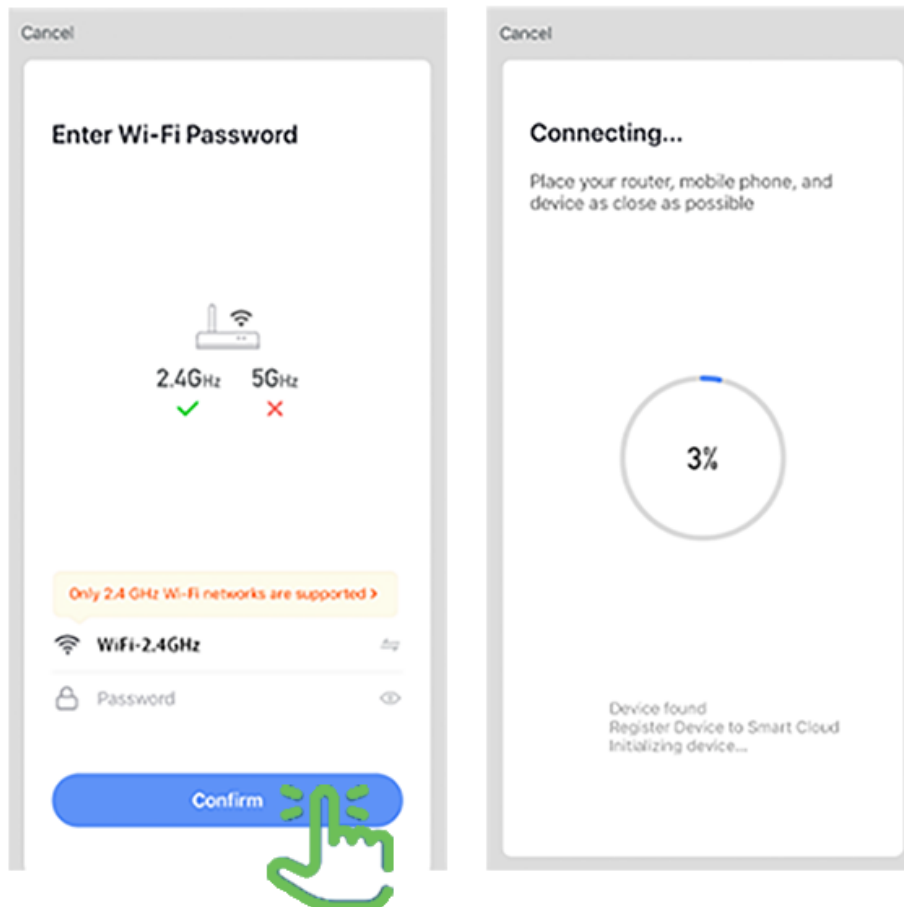
**NOTE: If the Lights are not blinking Press the middle button for 3 seconds**



After confirming that you are on a  
2.4GHz WiFi network,  
tap Confirm

**10** The status window will appear.  
Wait until it has completed.

**NOTE:** If unsuccessful, the "failed to Add"  
screen will appear. Quit the app and repeat  
the previous steps.

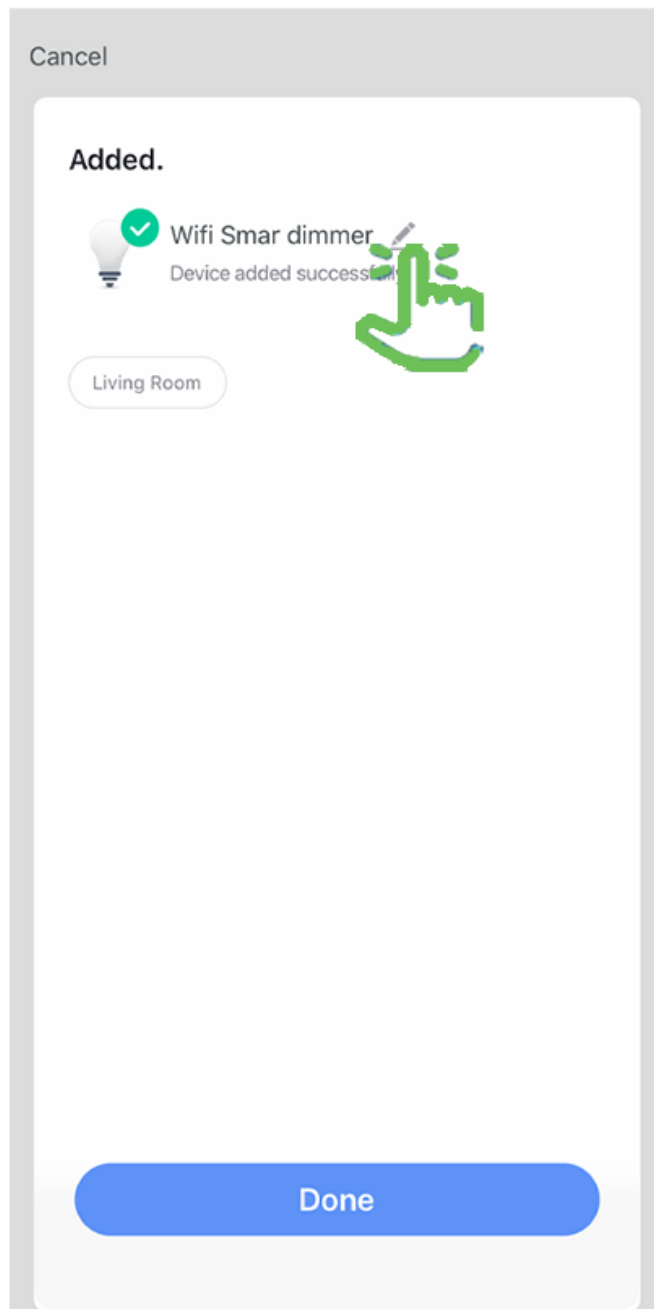


11

To rename the light, tap the Pen icon, enter the new name and tap Done.

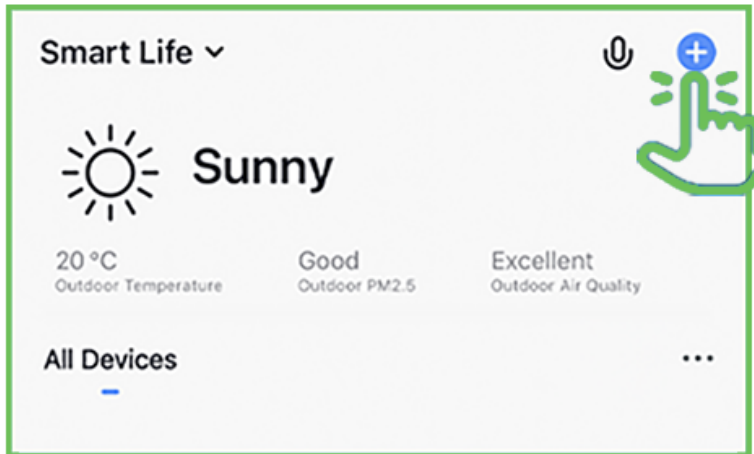
The bulb(S) is now ready to be controlled with the Smart life App.

**NOTE: Constant power to the light(S) is required at all times**



# Adding Additional (Bluetooth) Devices

**12** Tap the Plus(+) sign in the upper right-hand corner.



**13** Make sure the bluetooth of your phone is on, tap lighting and then tap lighting (Bluetooth) device.

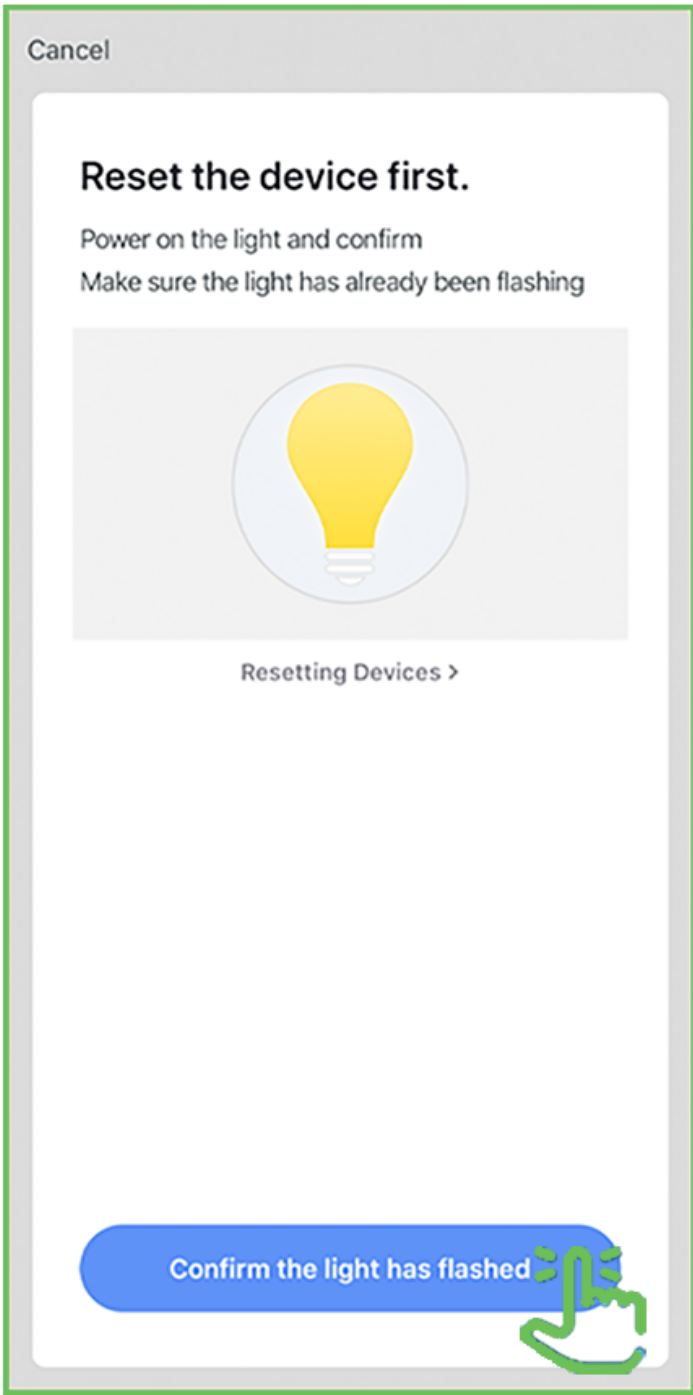




14

Power on the Lights and make sure the light(S) are blinking, then tap Confirm.

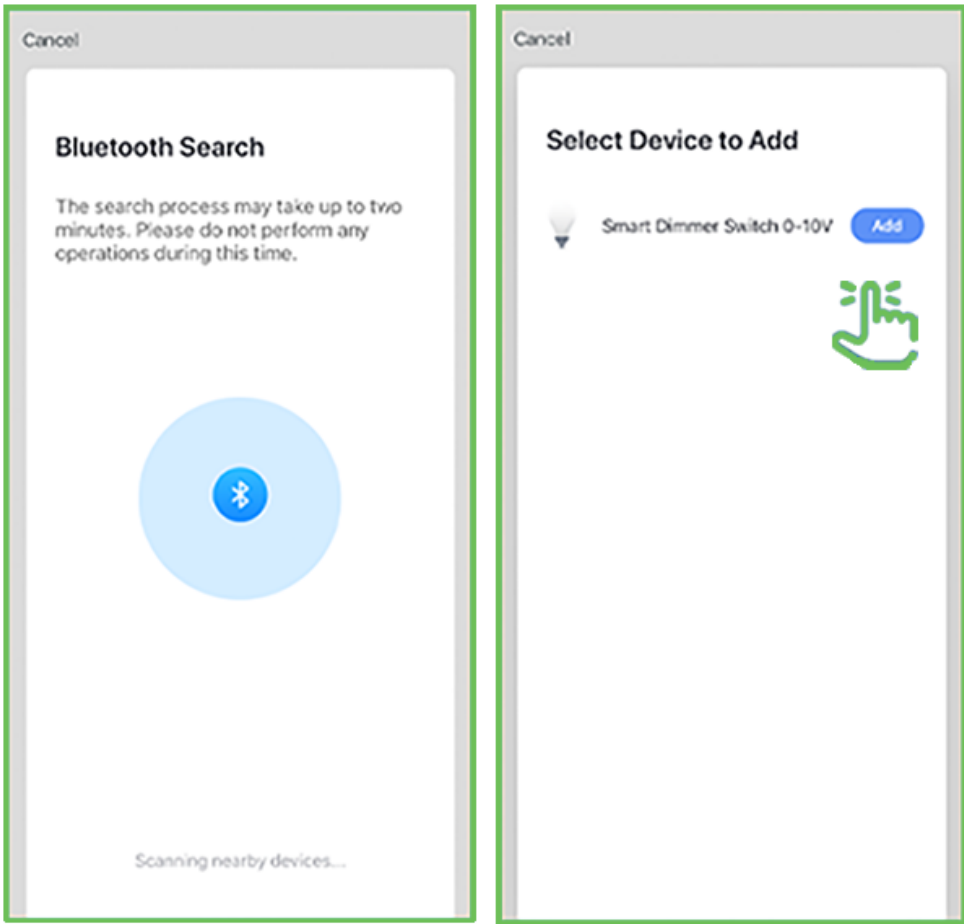
**NOTE: If the Lights are not blinking press middle button for 3 seconds**



# 15

**The status window will appear.  
Wait until it has been completed**

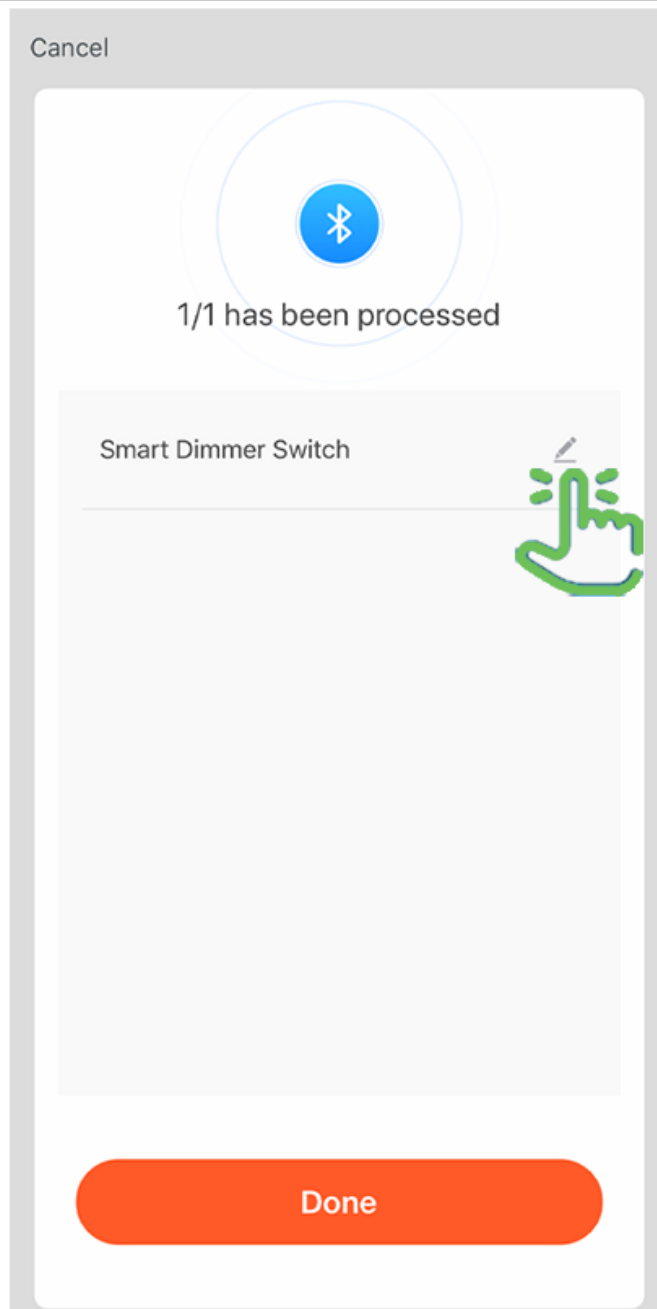
NOTE: If unsuccessful, the "failed to Add" screen will appear, Quit the app and repeat the previous steps.



# 16

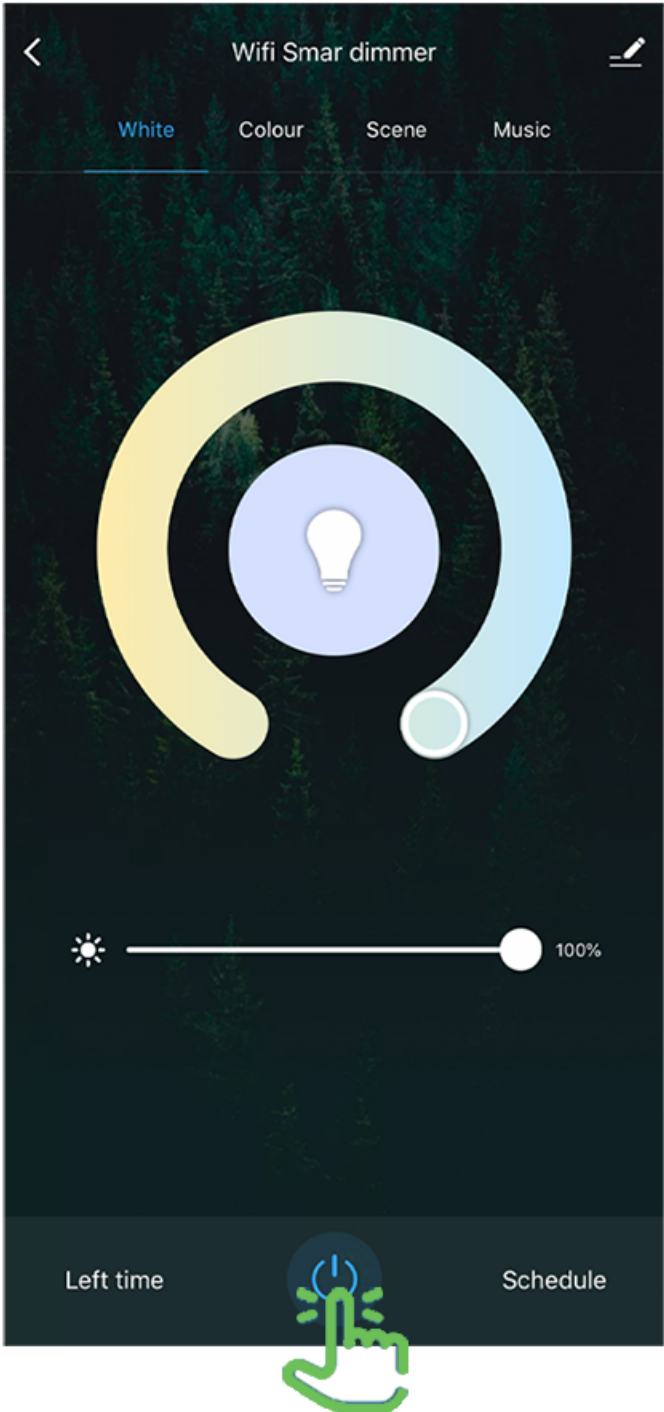
To rename the light, tap the Pen icon, enter the new name and tap Done. The bulb(S) is now ready to be controlled with the Smart life App.

**NOTE: Constant power to the bulb(S) is required at all times**



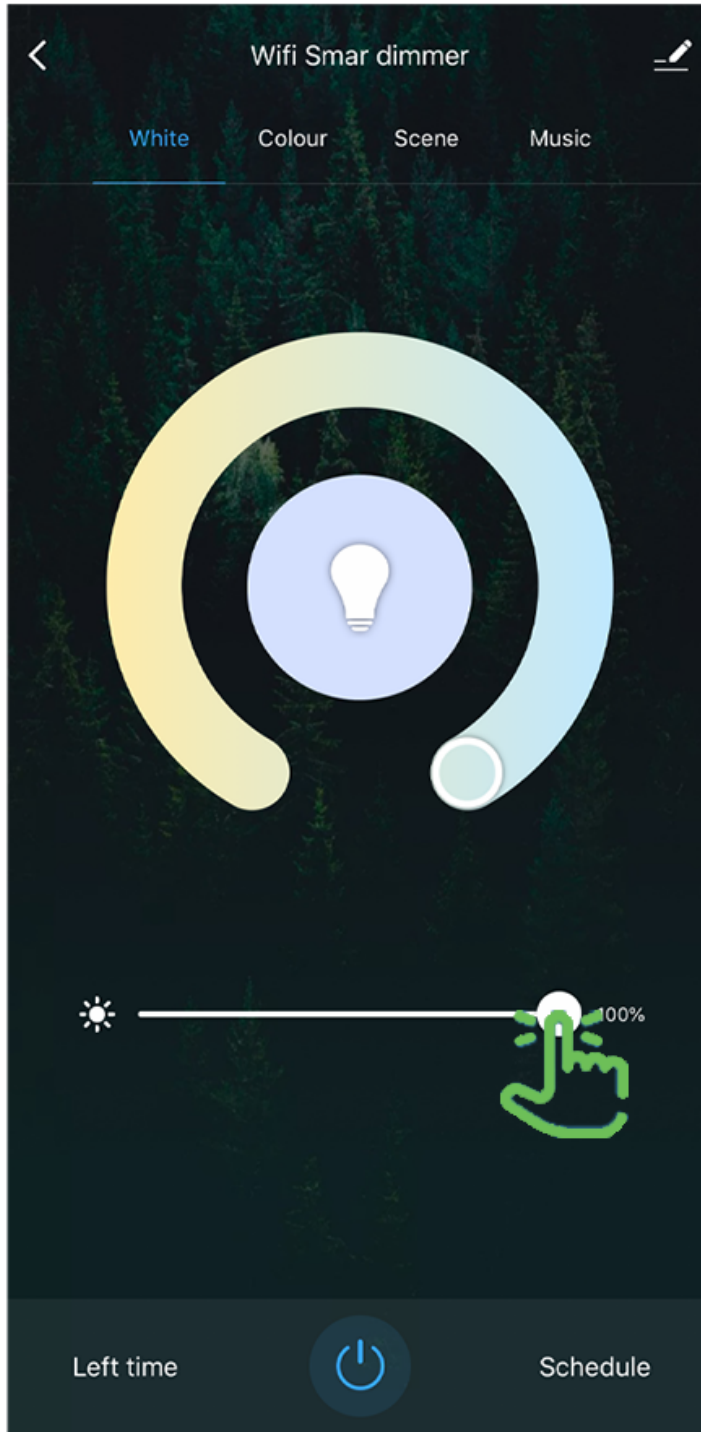
# Features

## 17 Individual light On/off



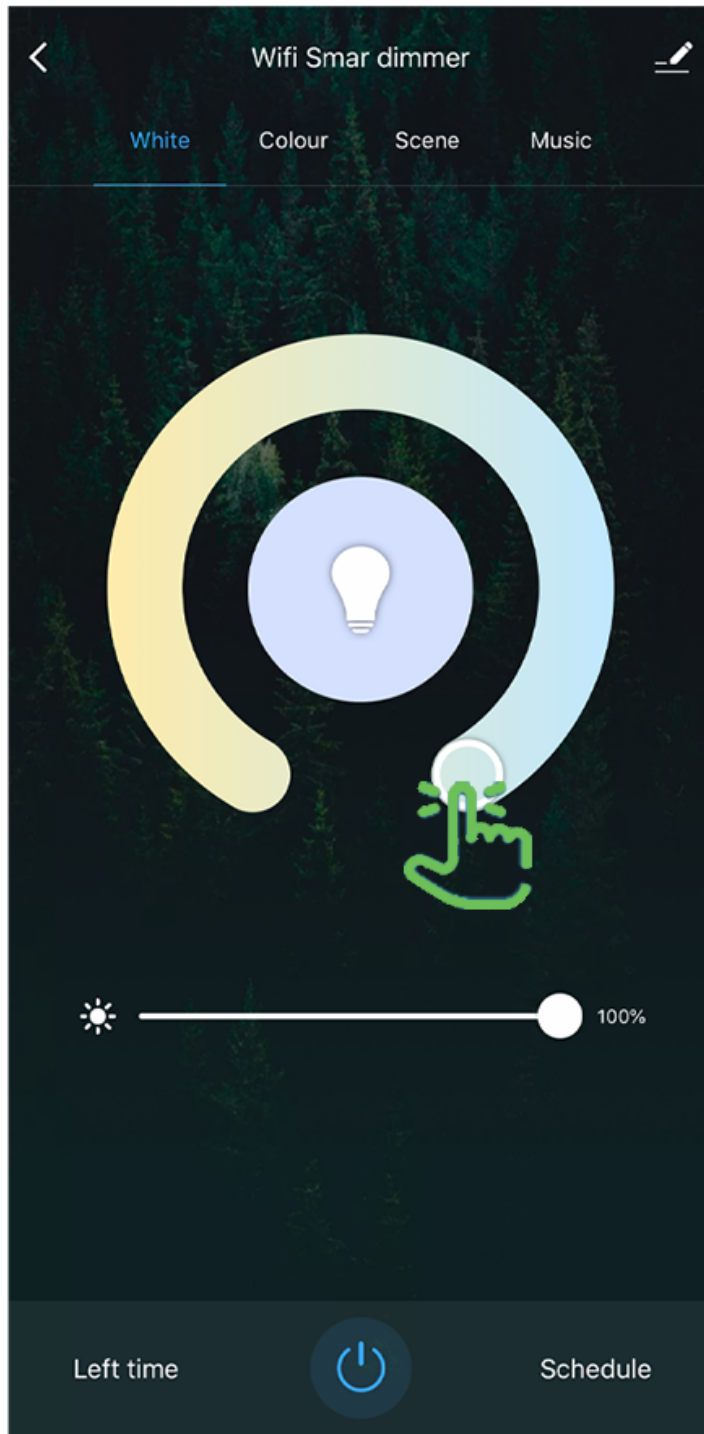
Use the dimming bar to set the brightness level.

from Bright(100)% to Dark(0%)



# Tunable White

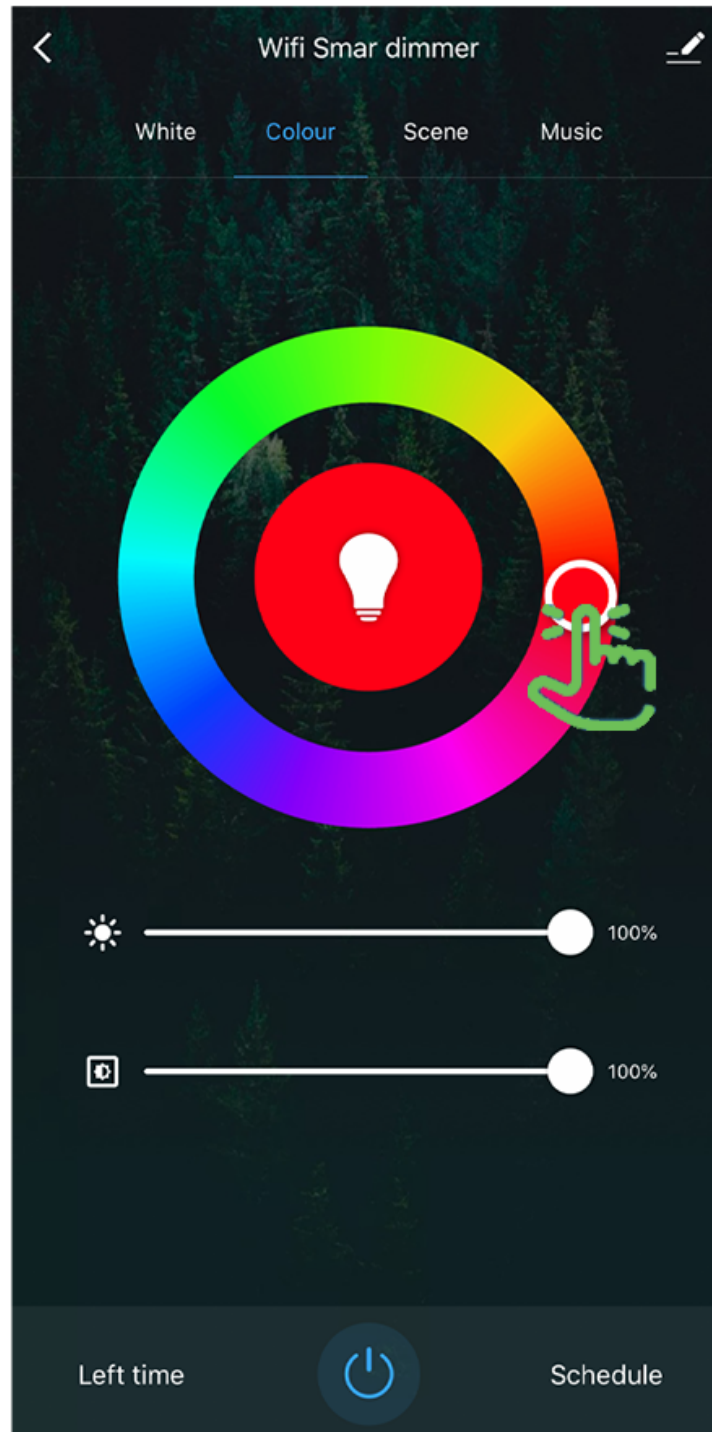
**19** Use the round slider to adjust color temperatures from Warm(2700K) to Cool(6500K)



# Color Changing

## 20

Tap on any part of the color picker to select the desired color



# Schedule

21

Tap on Schedule

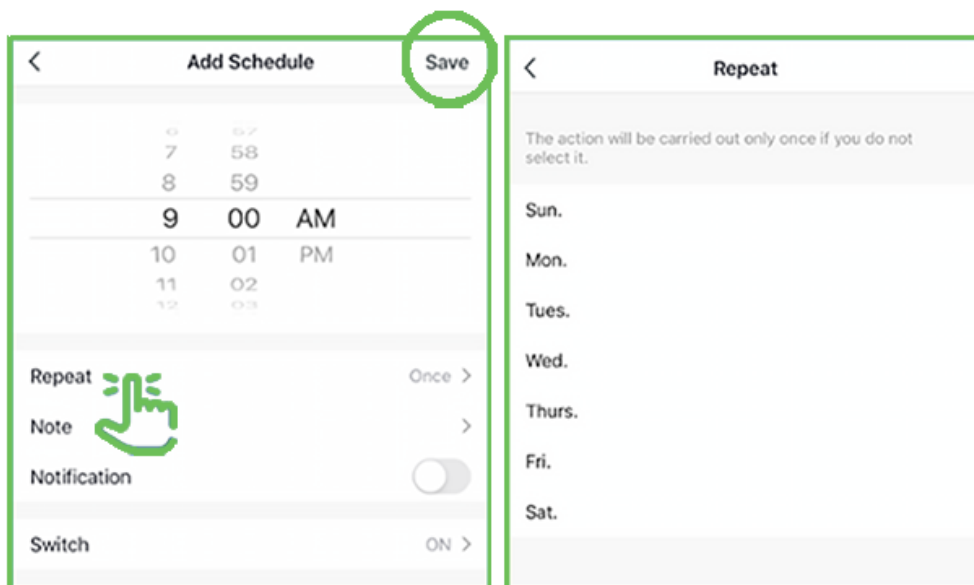


Tap Add



22

Choose a Start time (on) and end time (off) to repeat on certain days of the week, tap Repeat other wise the schedule will only occur once, then Sav

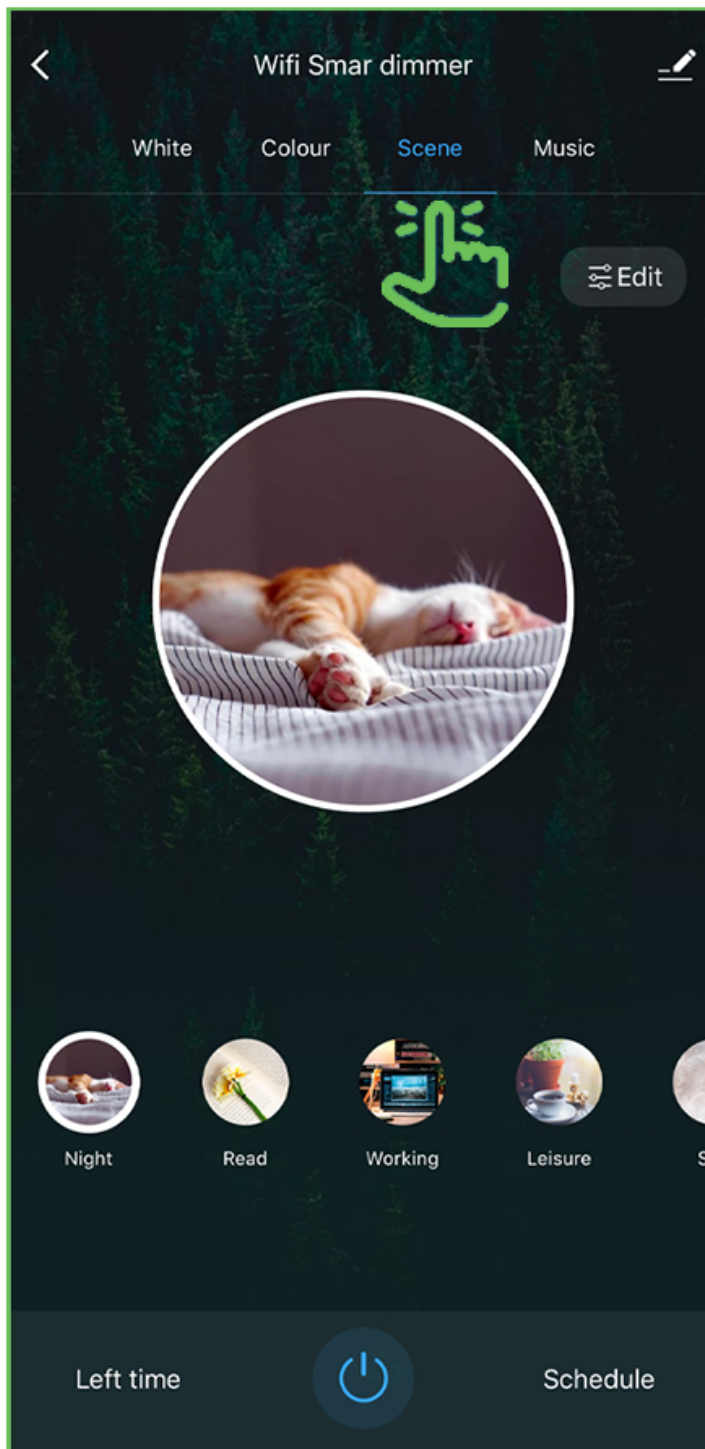




# Scens

23

## Tap Scene



# Schedule

21

Tap on Schedule

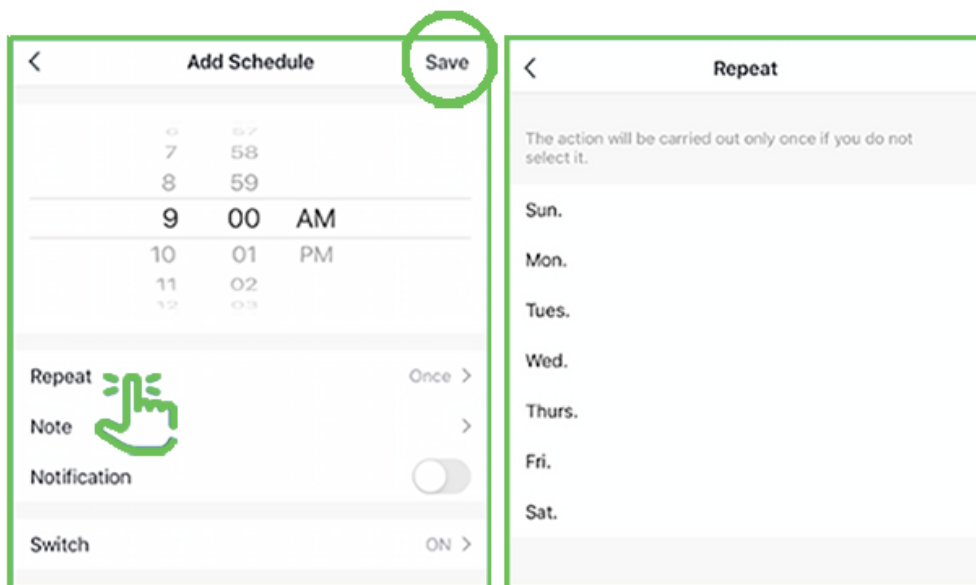


Tap **Add**



22

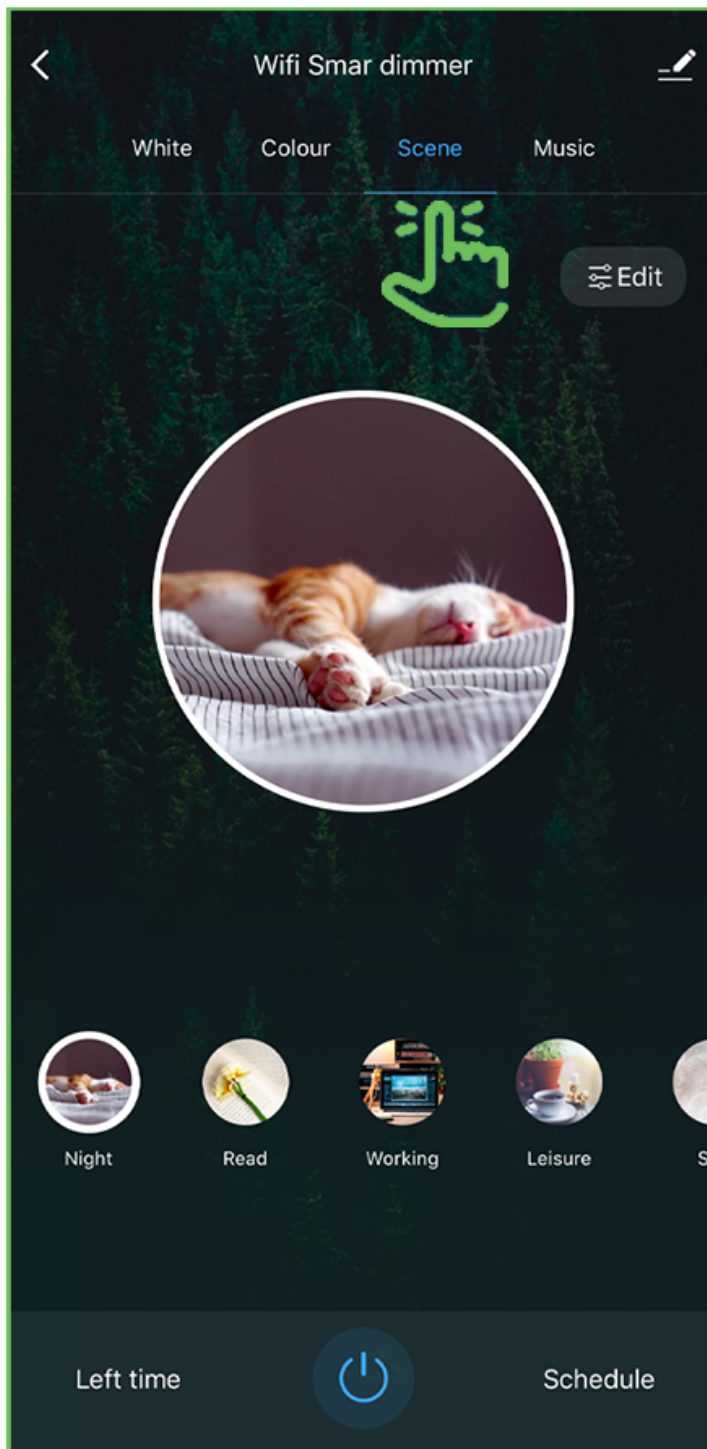
Choose a Start time (on) and end time (off) to repeat on certain days of the week, tap Repeat other wise the schedule will only occur once, then Sav



# Scens

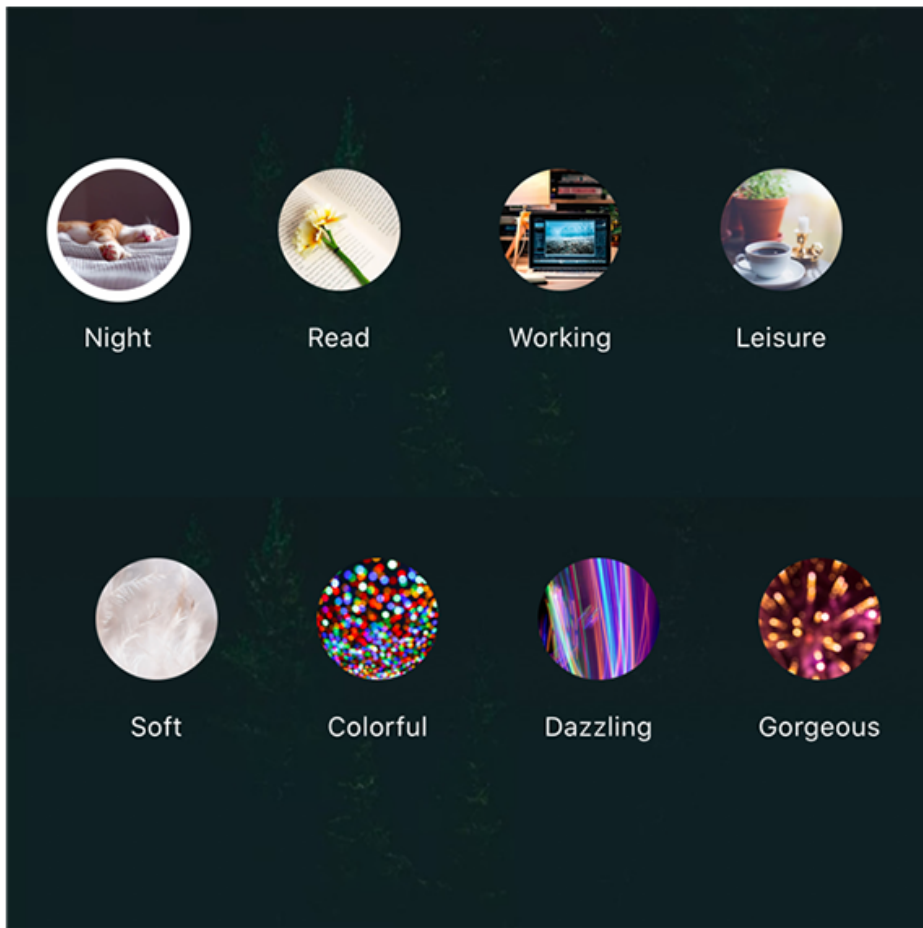
23

## Tap Scene



# 24

You can choose the scene you prefer.



# 25 Music

Tap Music and the color of the light will change with the music.




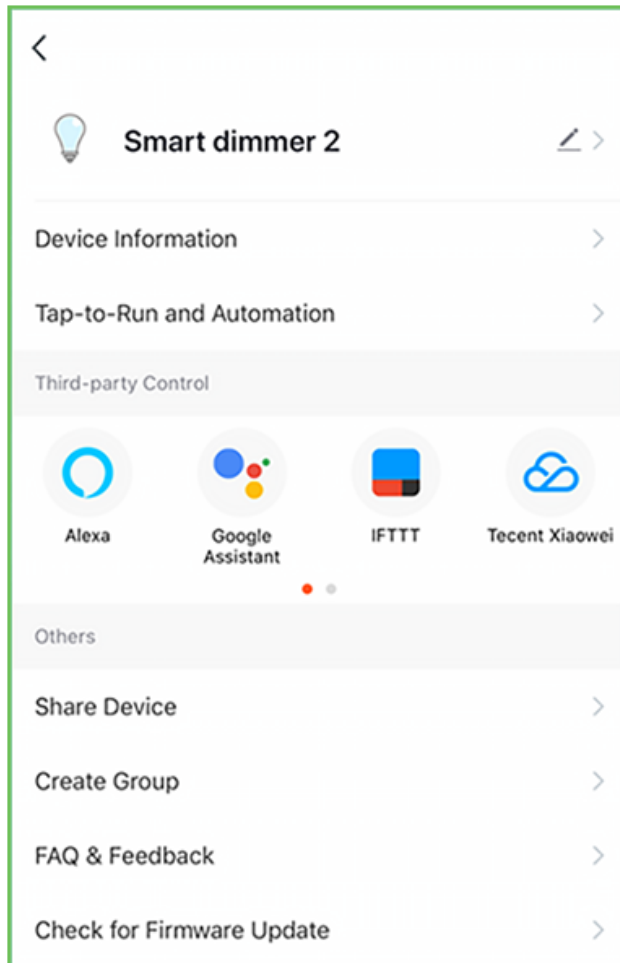
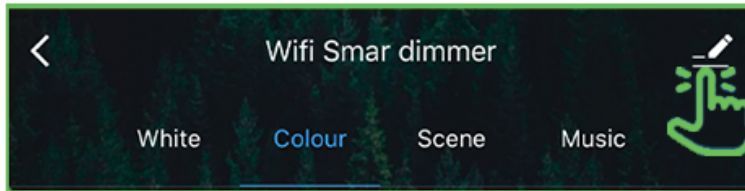
# Additional Features

## Renaming/removing devices

### 26

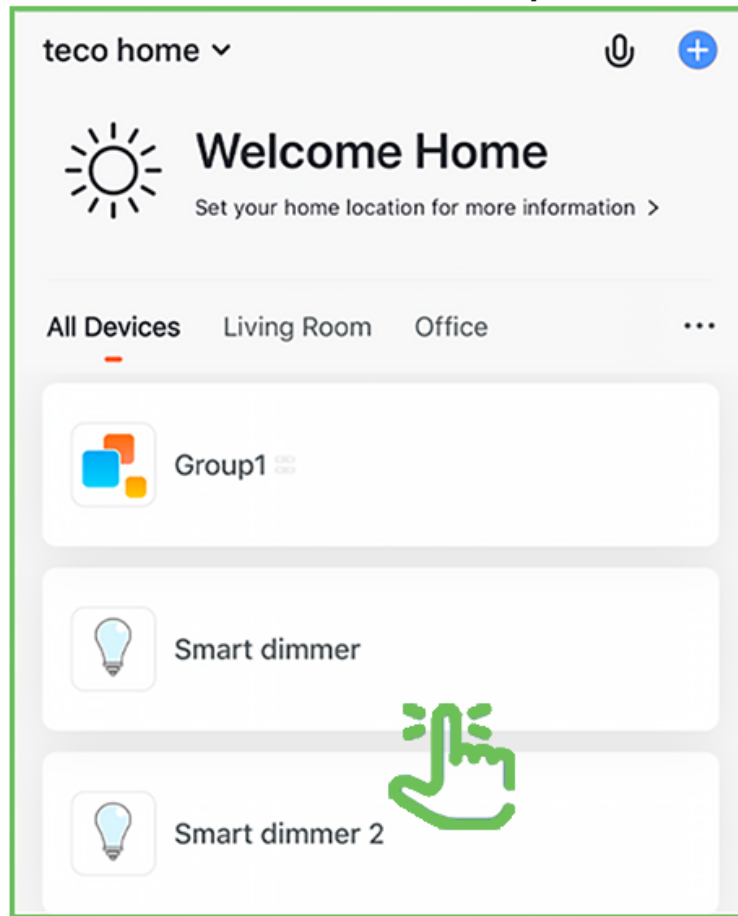
**Additional features are available in the bulb settings context menu, including renaming and removing devices.**

**Tap the context menu in the upper right corner(  )**



# Groups

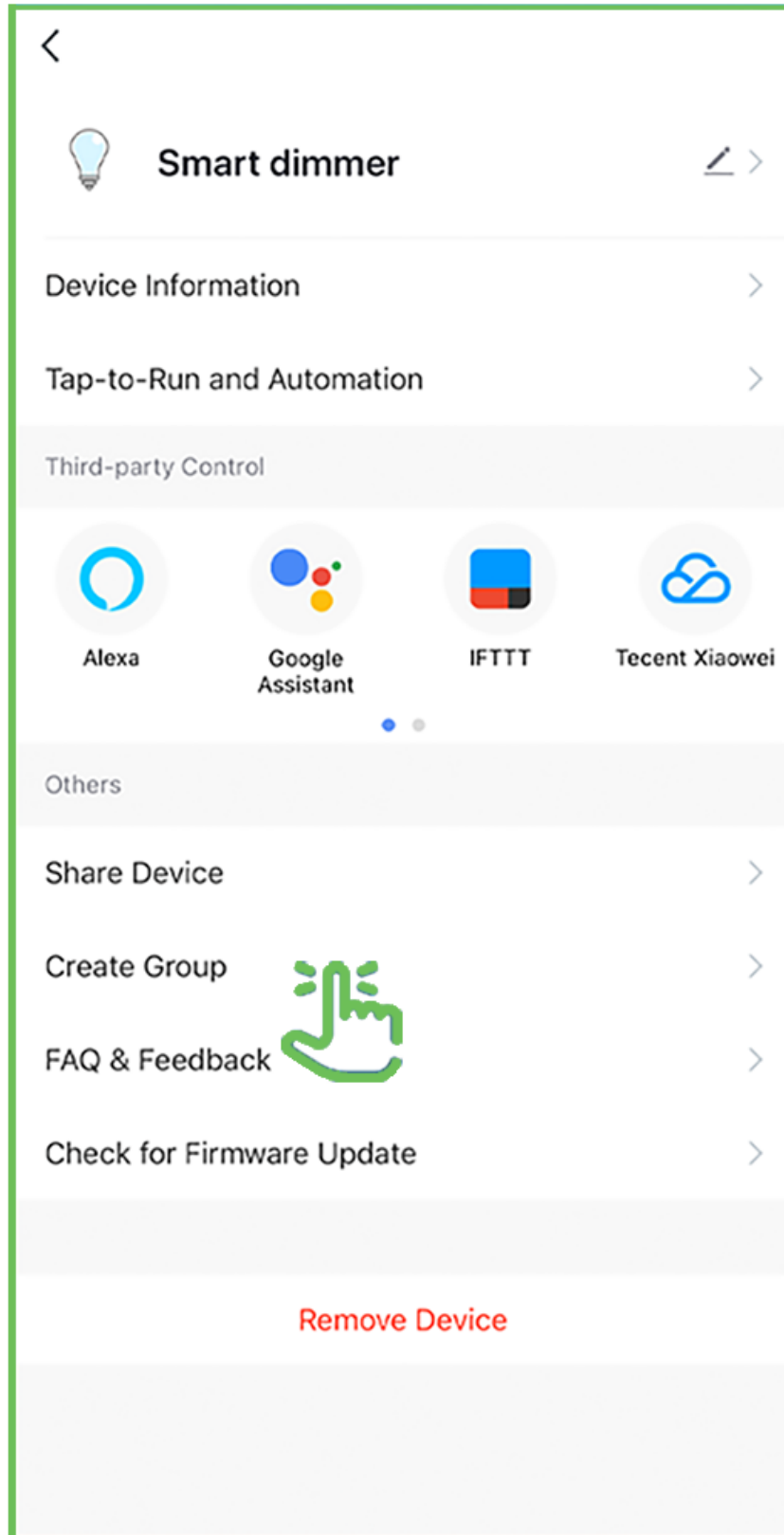
27 Tap one device which you want to create Group.



Tap the  icon.

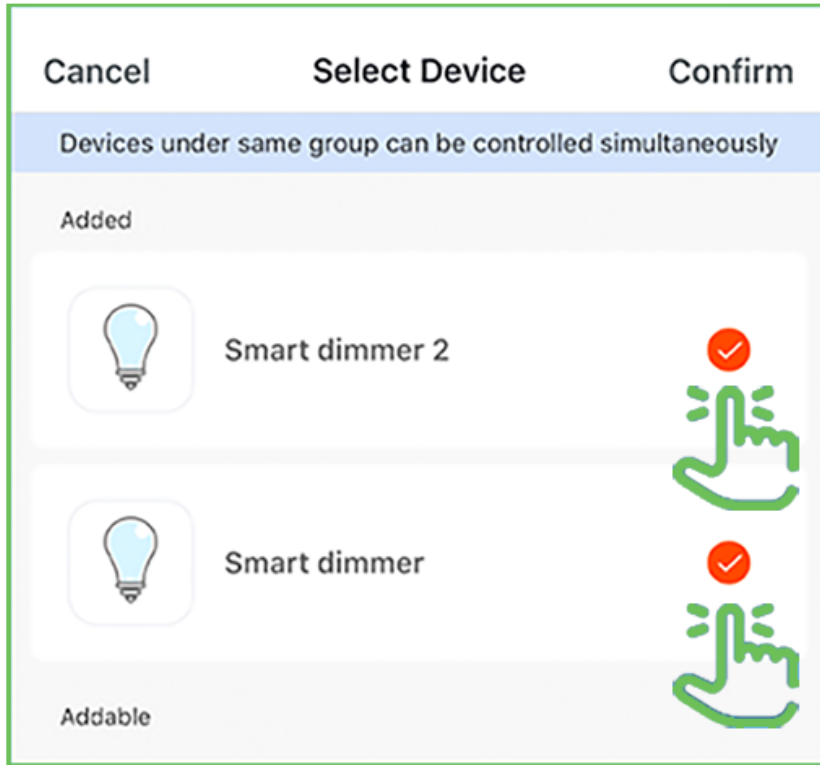


# 28 Tap Create Group.

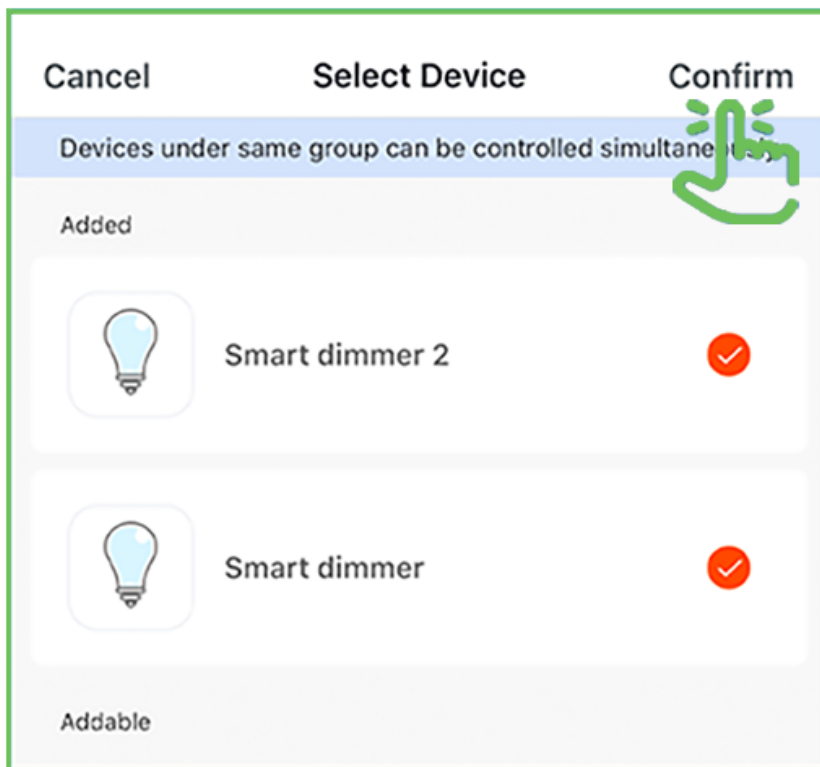




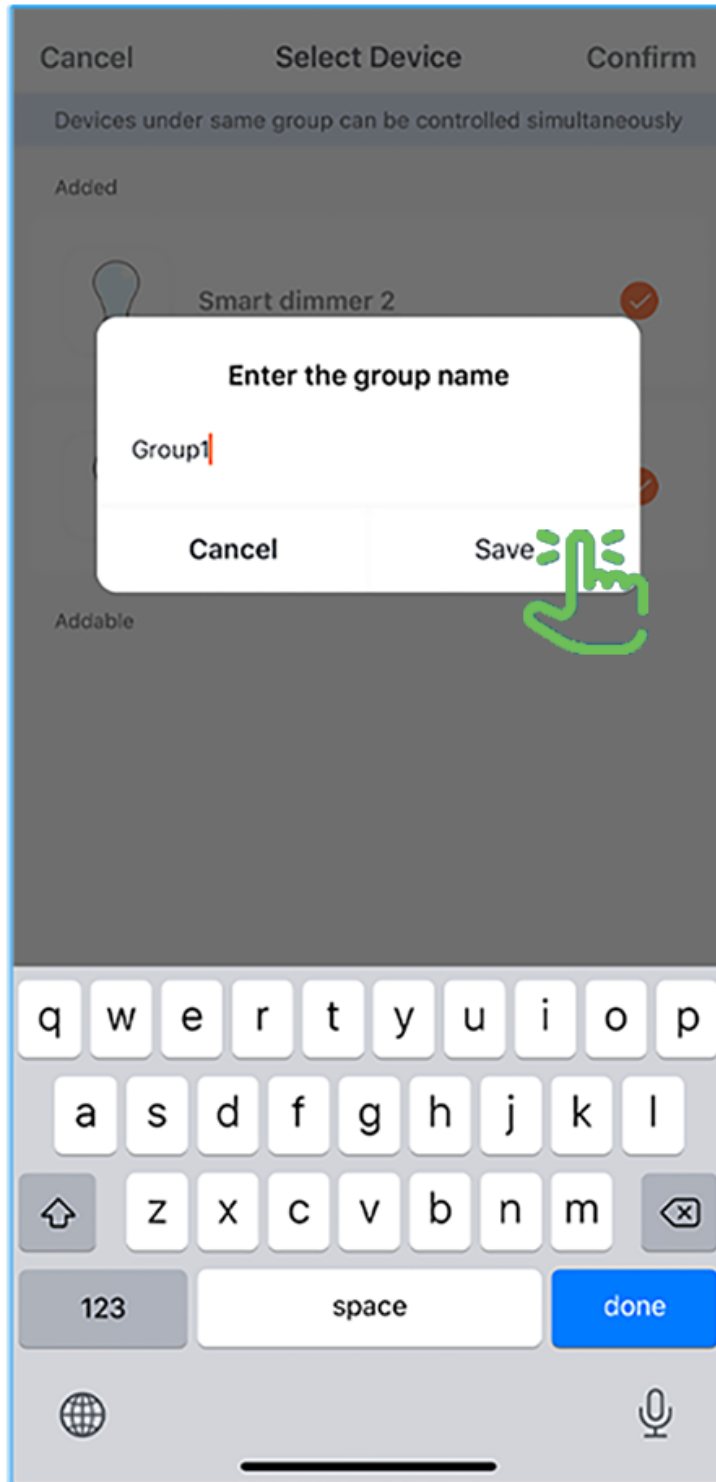
## 29 Select the lights that you want to group.



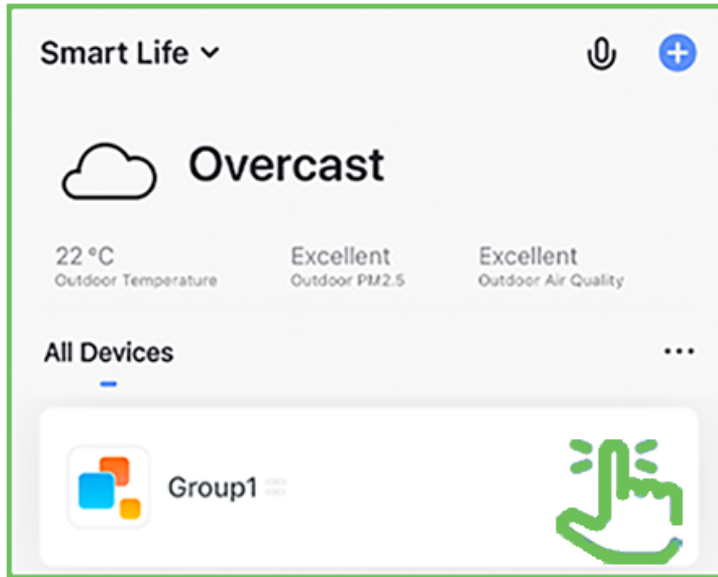
## 30 Once the bulbs are selected tap Confirm.



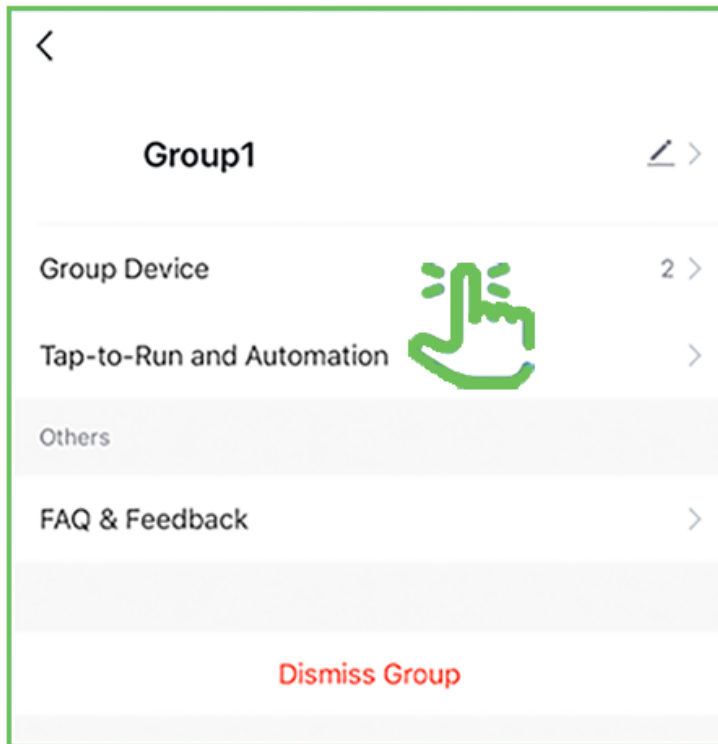
Tap the group name and enter the name of the group.



### 32 Tap the the Group icon.

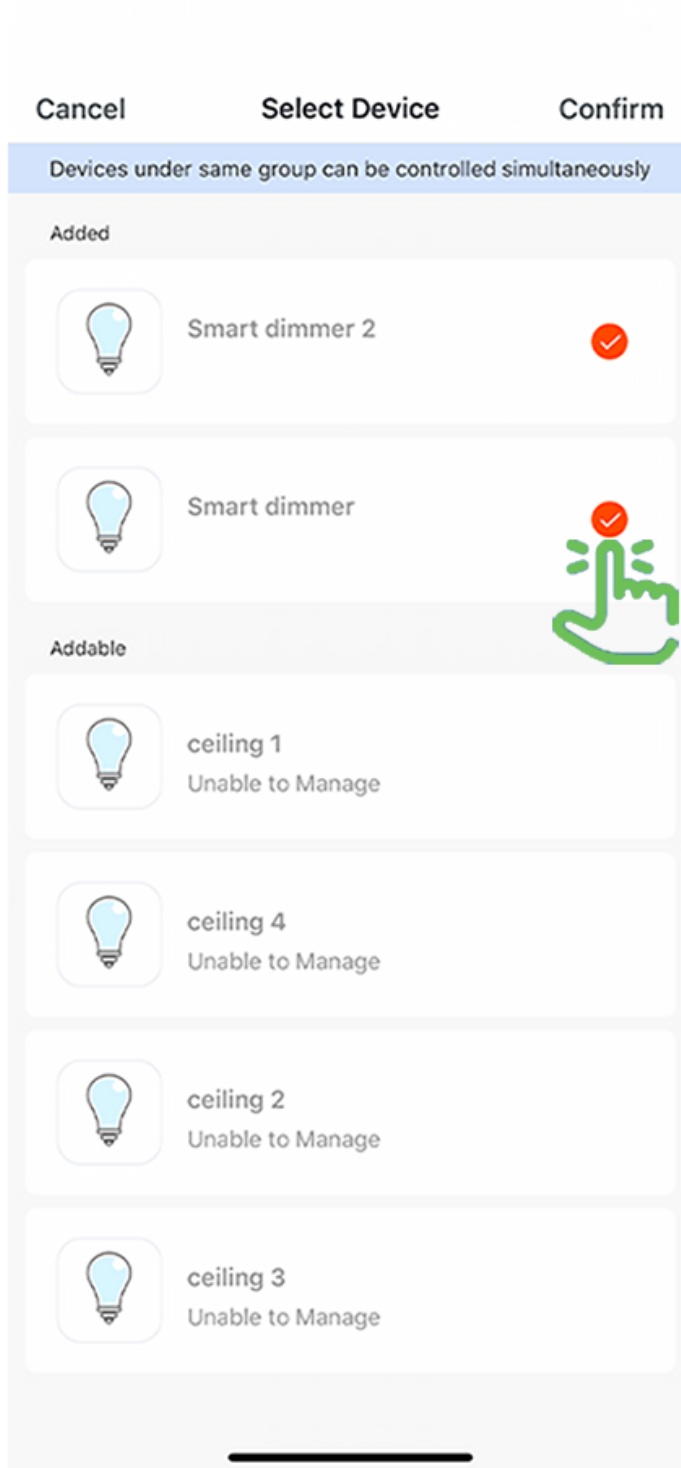


### 33 Tap Group Device.



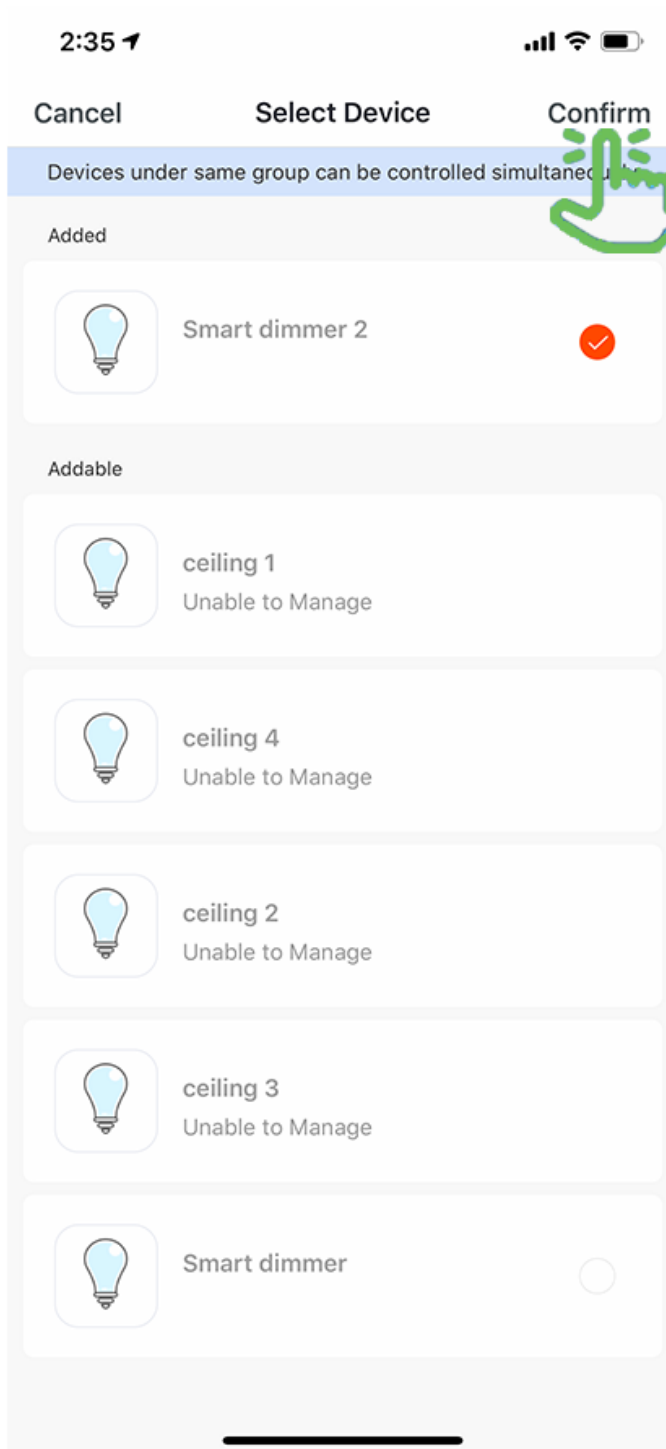
# 34

Select the lights that you want to remove from the group.



# 35

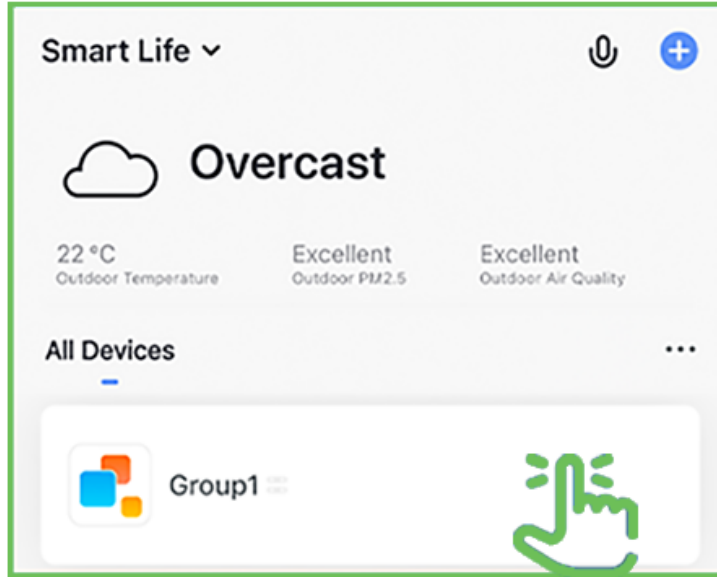
Once complete, tap confirm in the upper right corner.



# Dismiss Groups

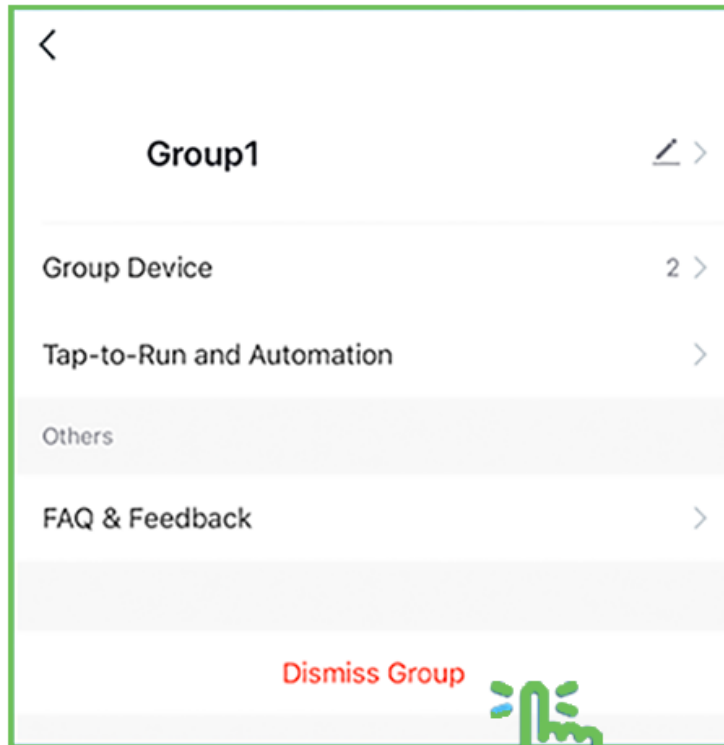
36

Tap the Group icon.



37

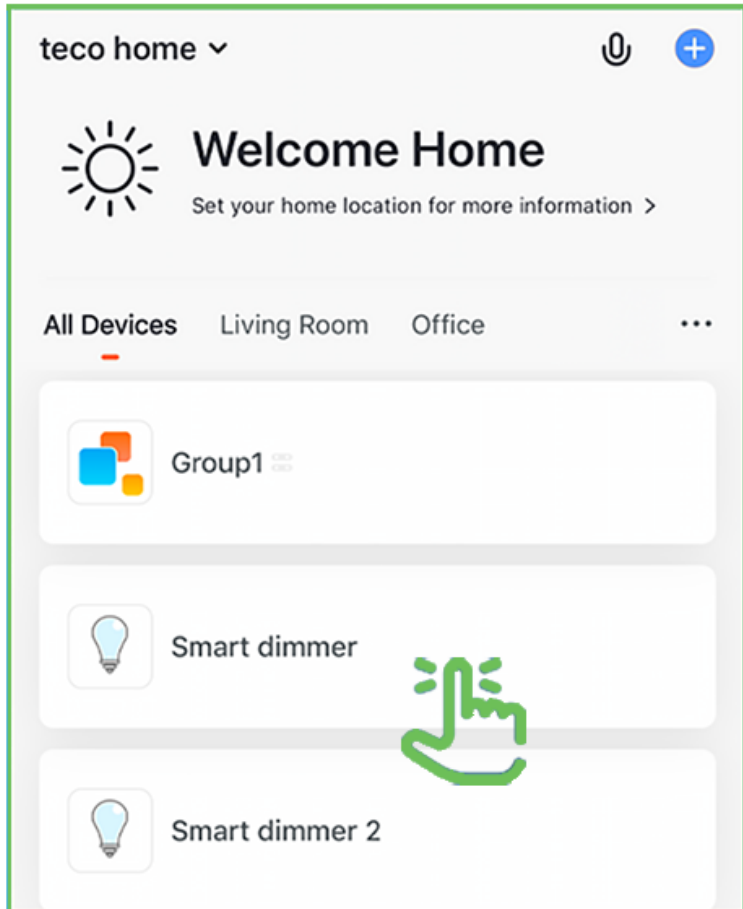
Tap Dismiss Group.




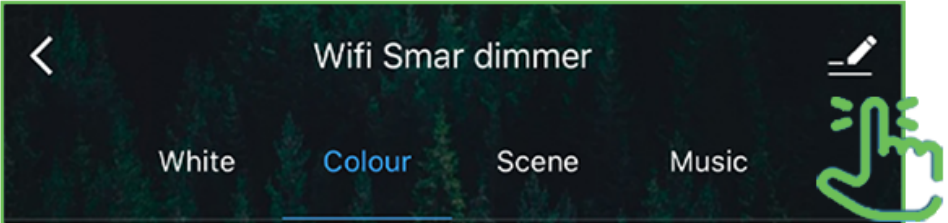
# Device Sharing

## 38

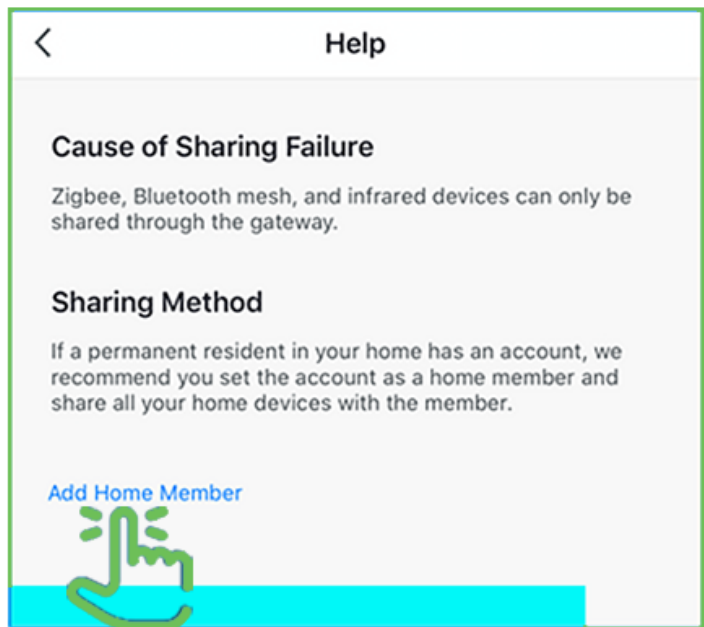
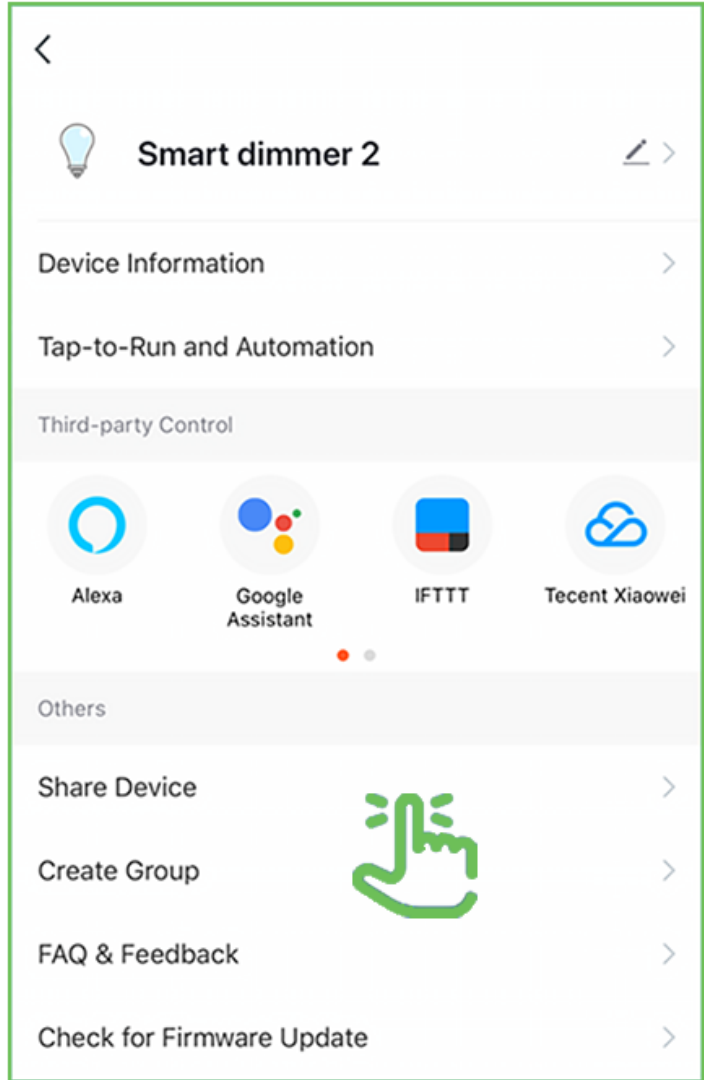
Open the device you want to share



39 Tap the  icon.



# 40 Tap Share Device and tap Add Home Member

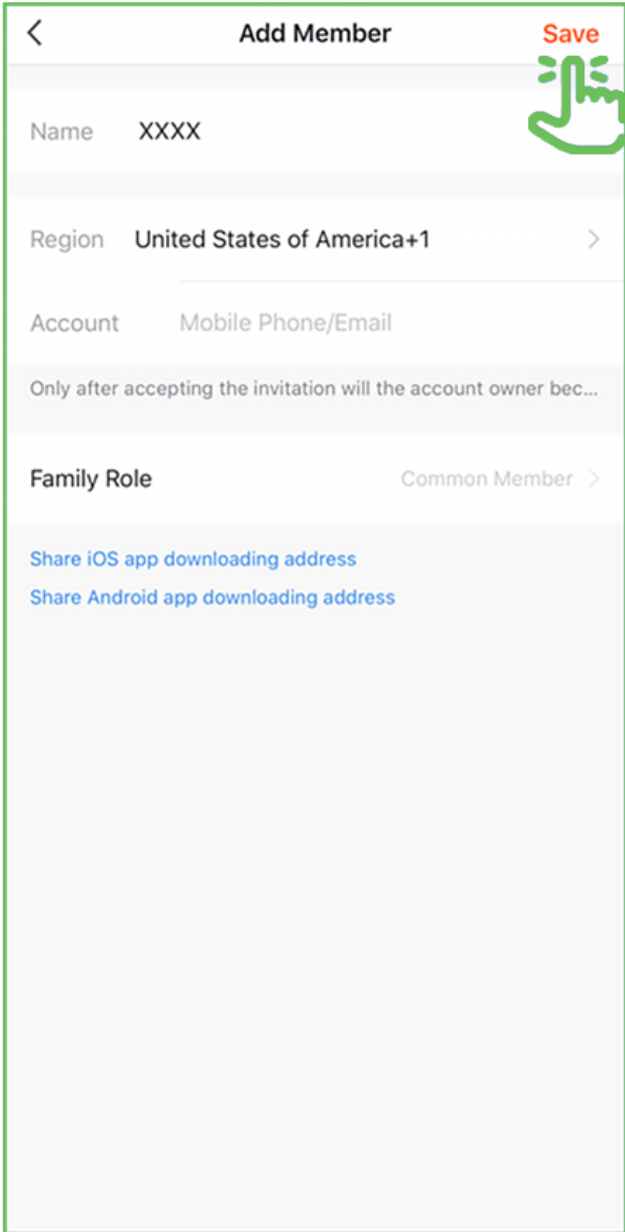




# 41

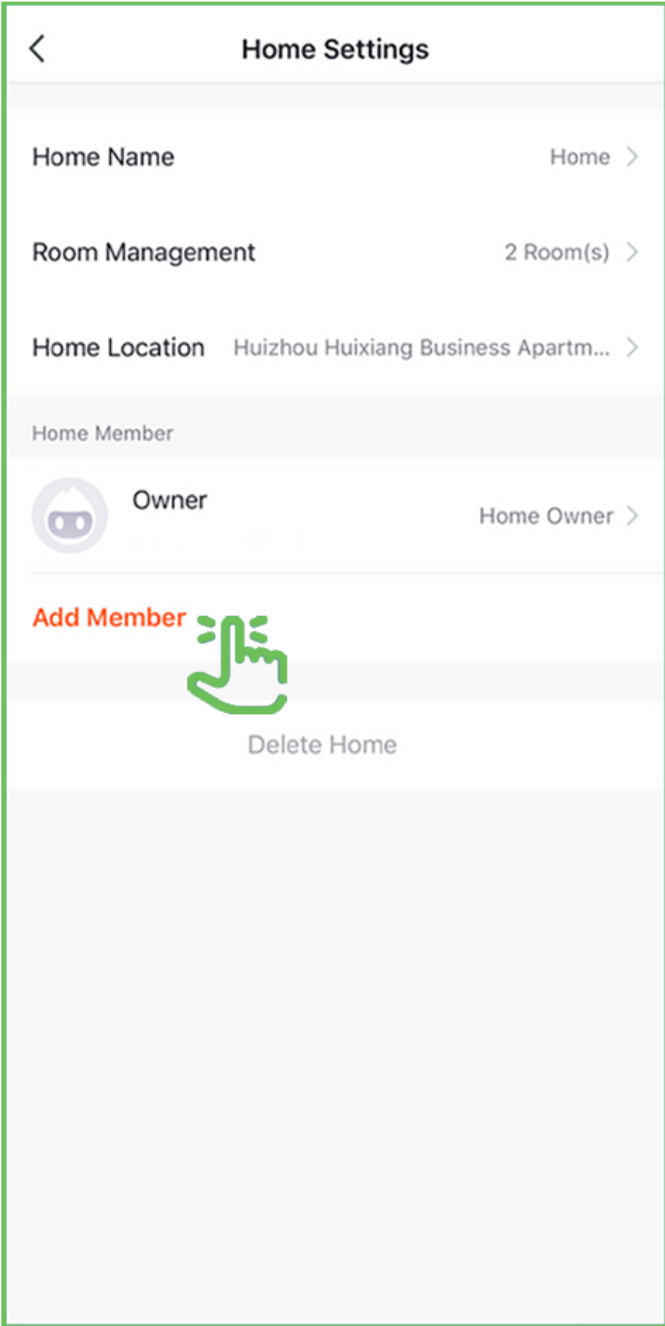
Enter the new member's phone number or email address, then tap Save When prompted.

**NOTE:** New members must set up an account before sharing is possible.



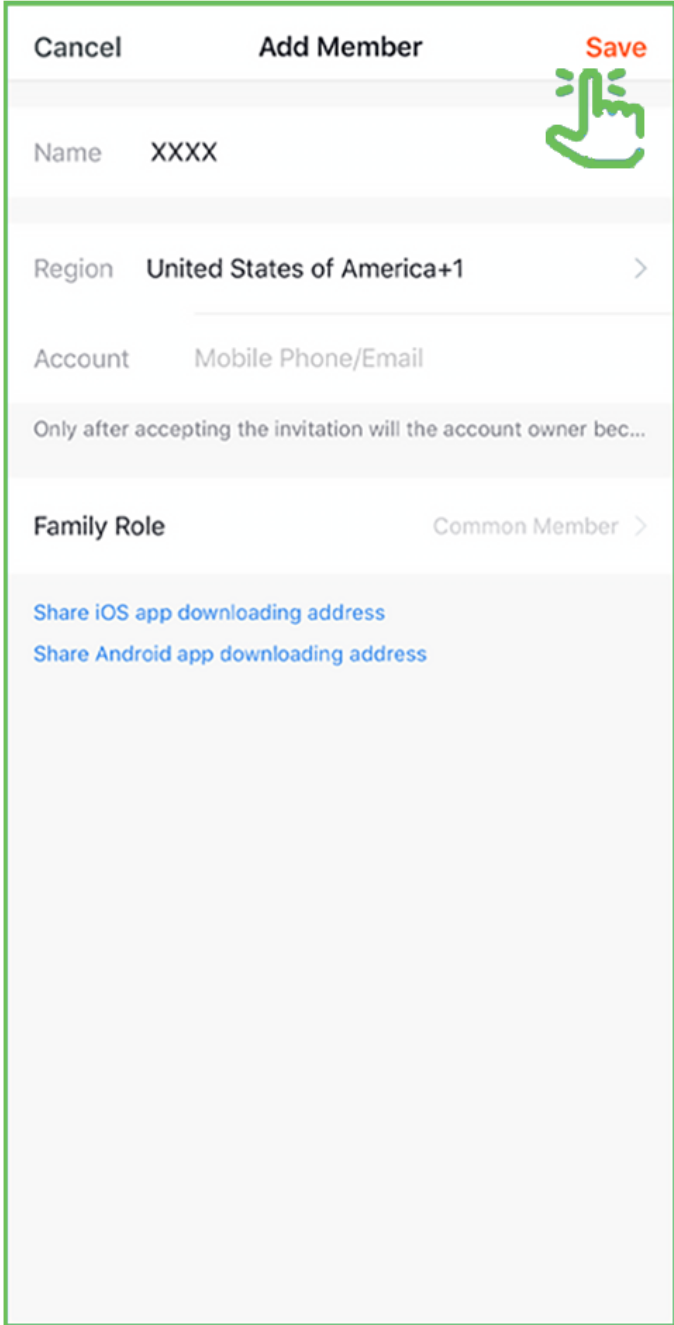
# Admin Sharing

**42** Enter Home Settings,  
then tap Add Member.



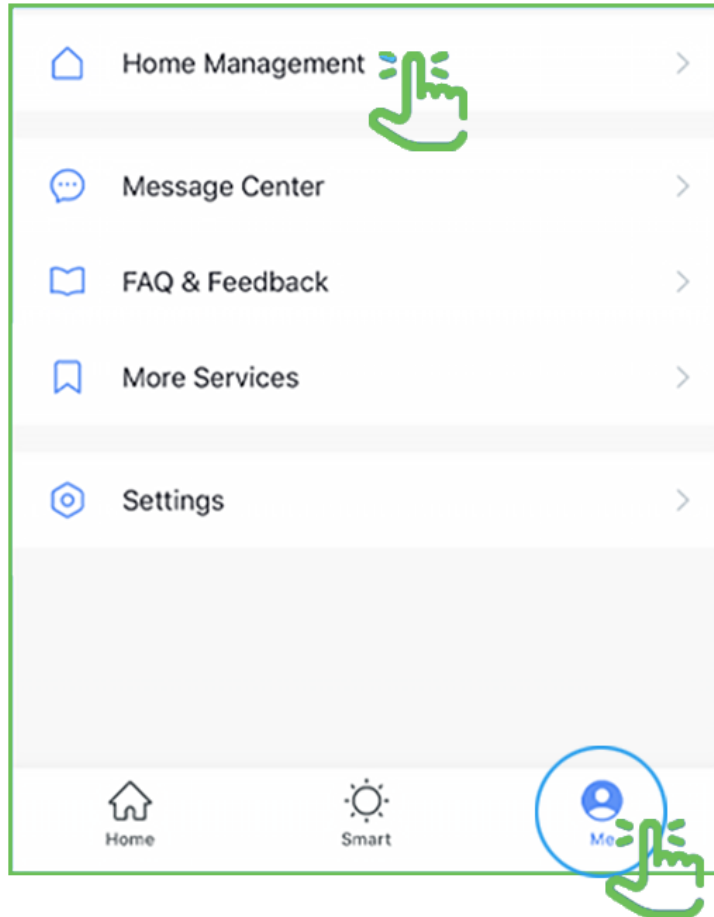
**Enter the new member's phone number  
or email address, then tap Save.**

**NOTE: New members must set up an  
account before sharing is possible.**

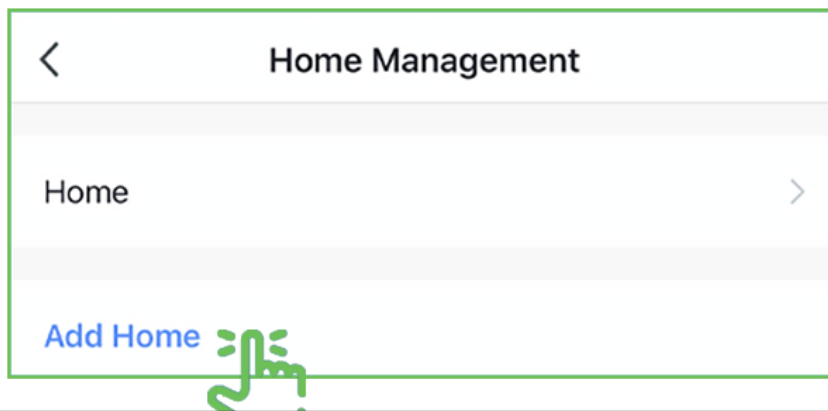


# Home Management

**44** Tap the ME icon, then tap Home Management.



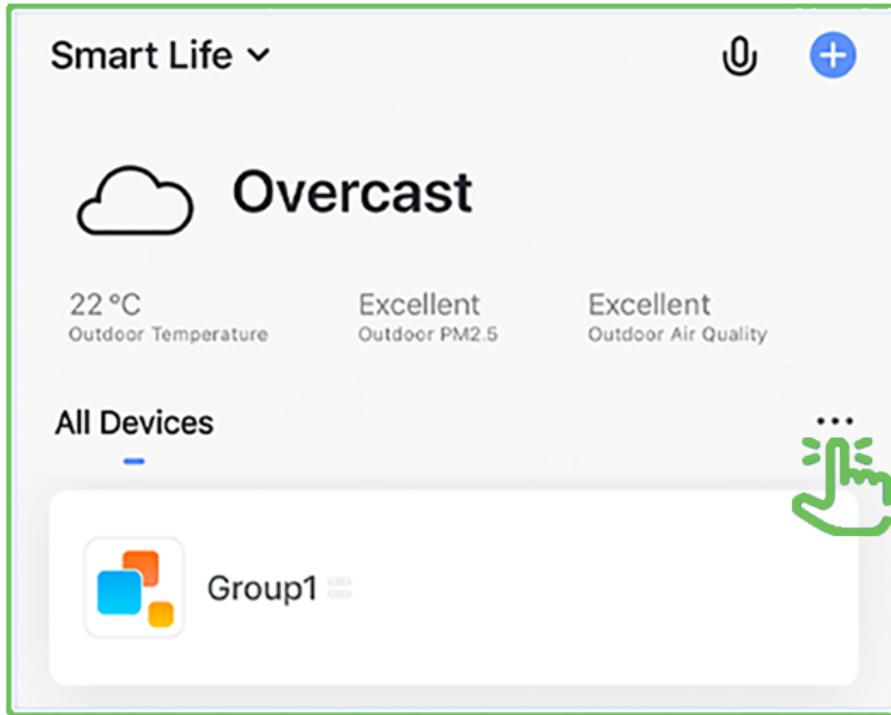
**45** Tap Add Home to indicate where the smart devices located.



# Room Management

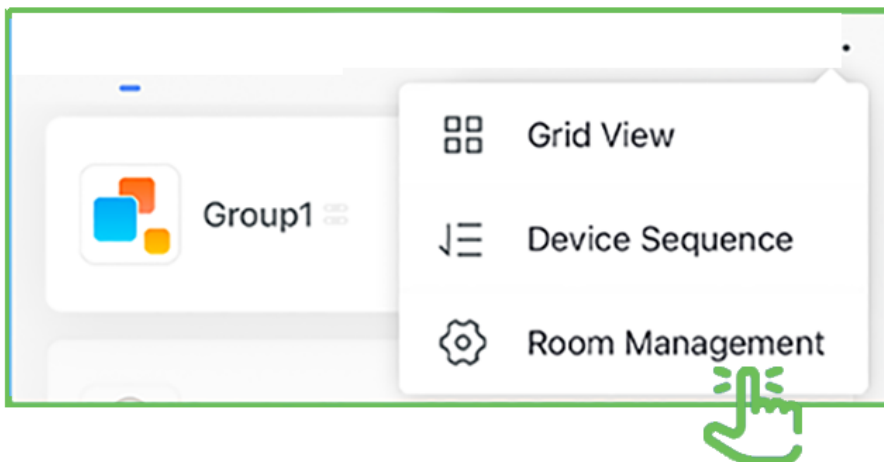
46

Tap "..."/> from the home menu.



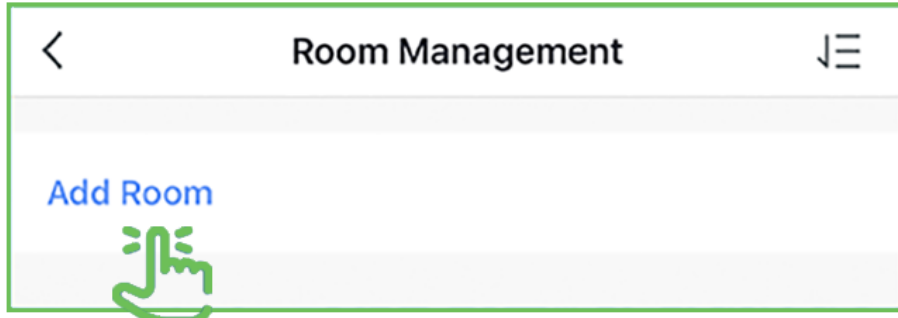
47

Tap Room Management.



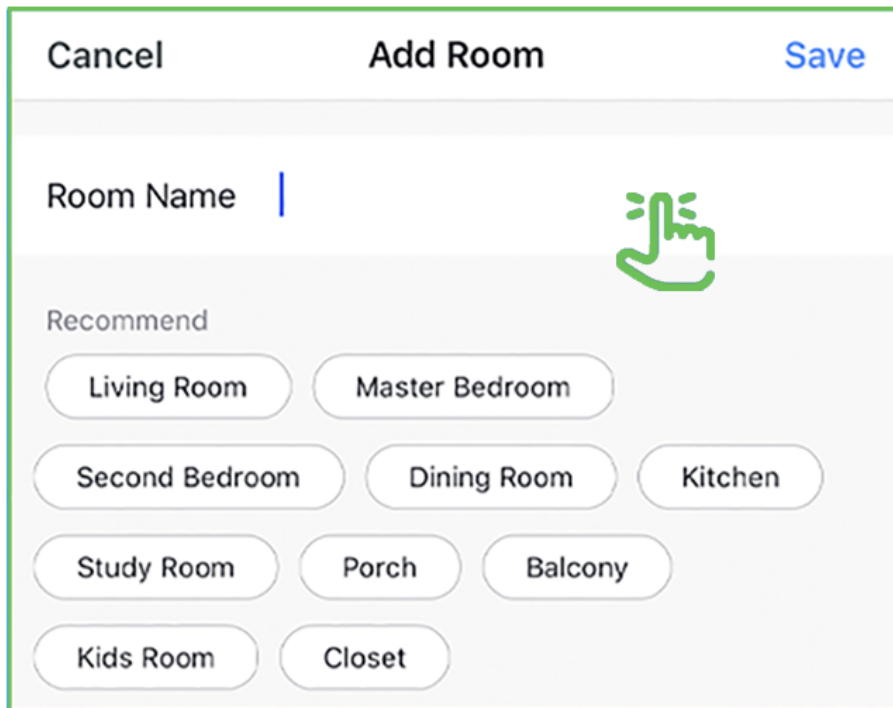
48

Tap Add Room.



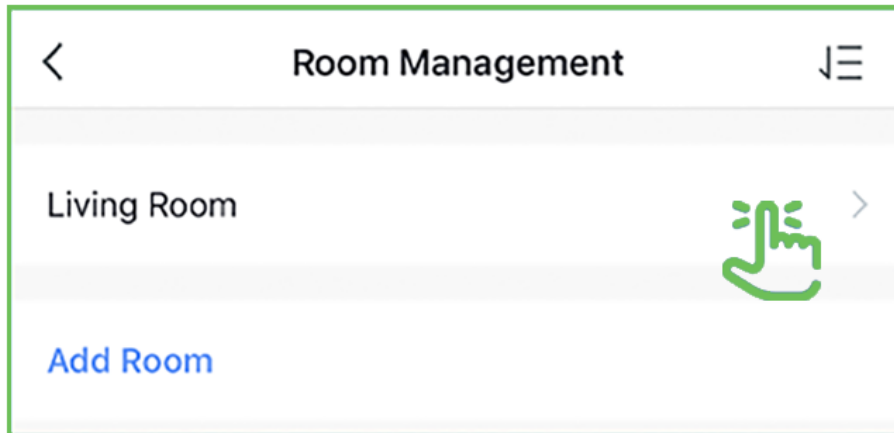
49

Tap a present room name  
or create your own.




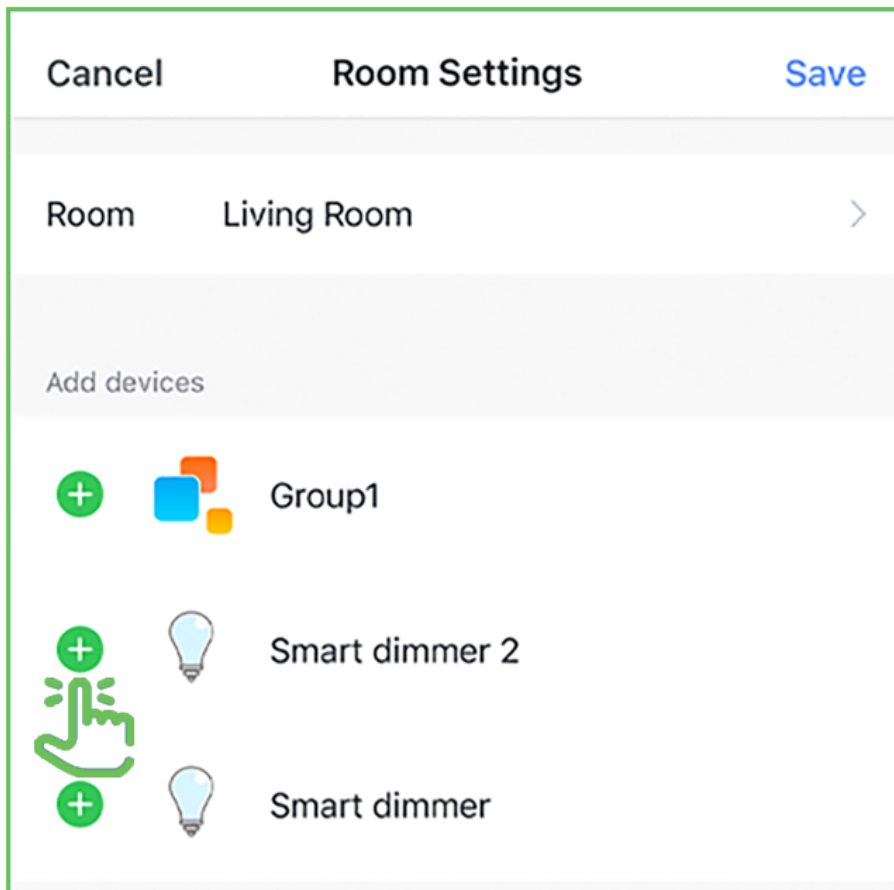
# 50

## Tap on room

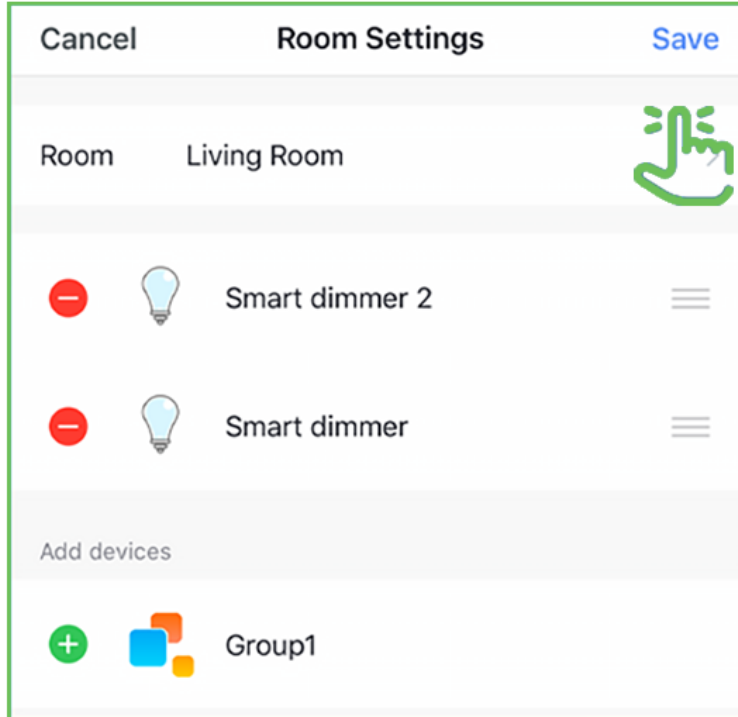


# 51

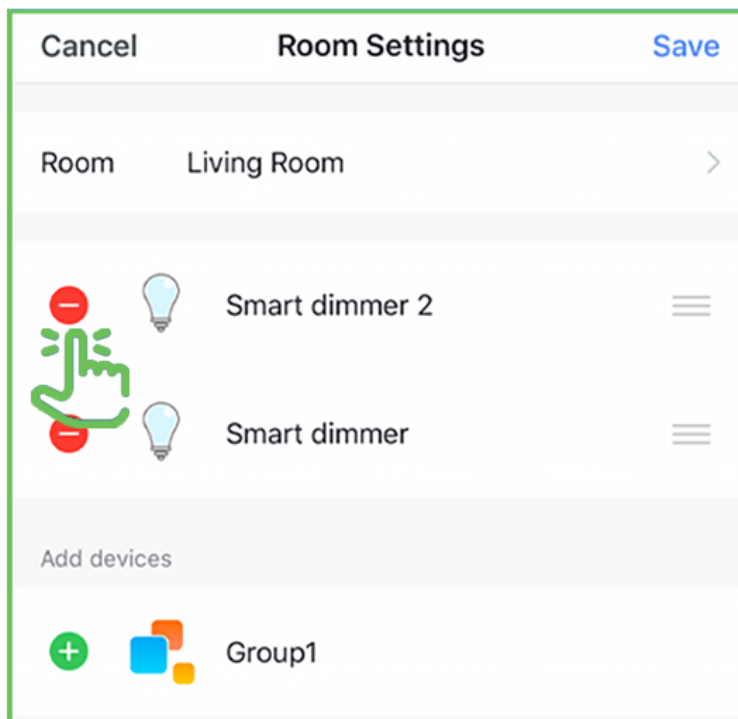
Add individual lamps by tapping the  icon next to each bulb's name.



## 52 Tap on Save when finished.



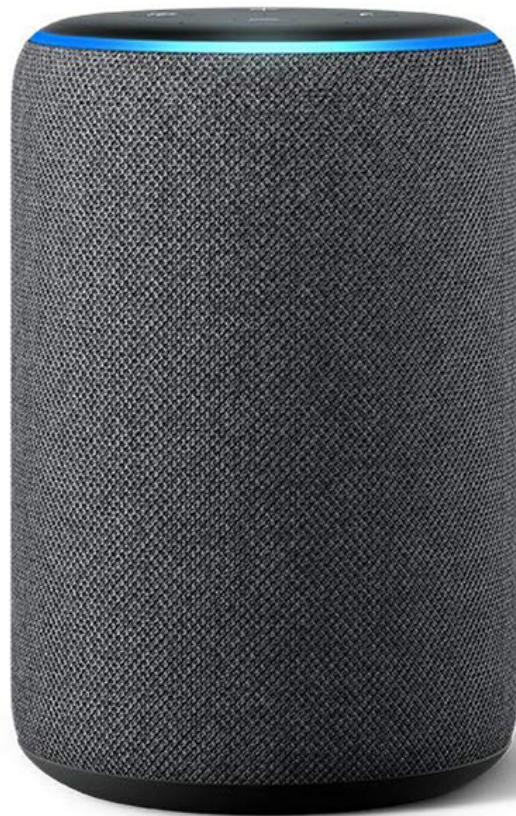
## 53 Remove individual lamps by tapping the icon next to each bulb's name.





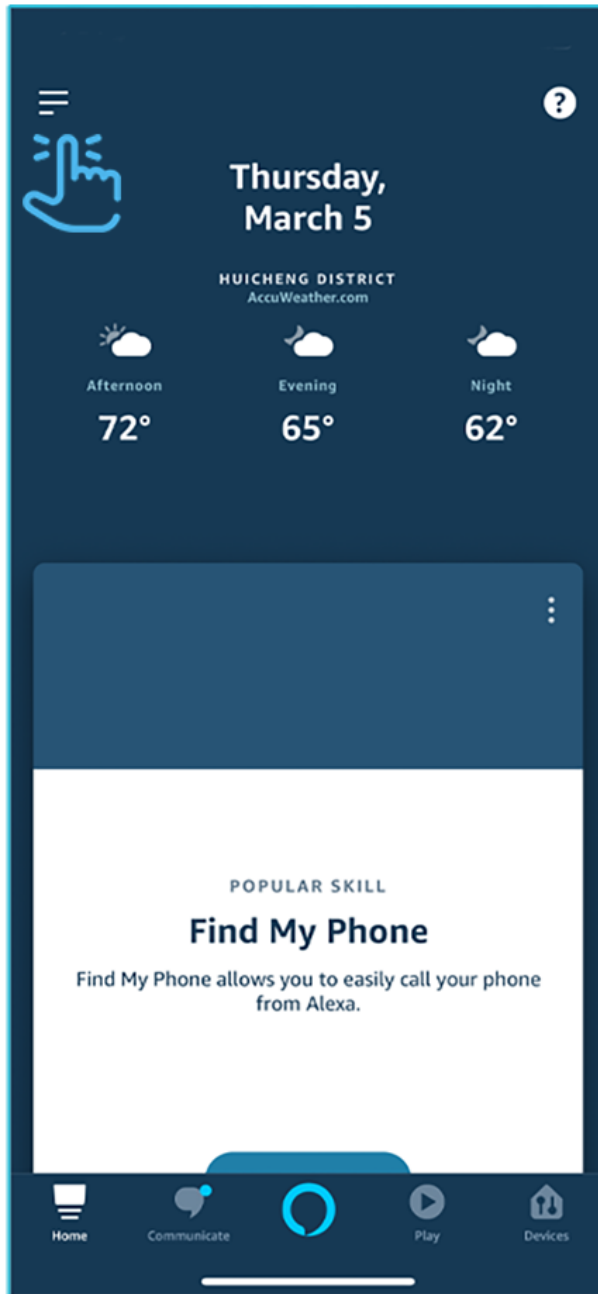


WORKS WITH  
amazon alexa



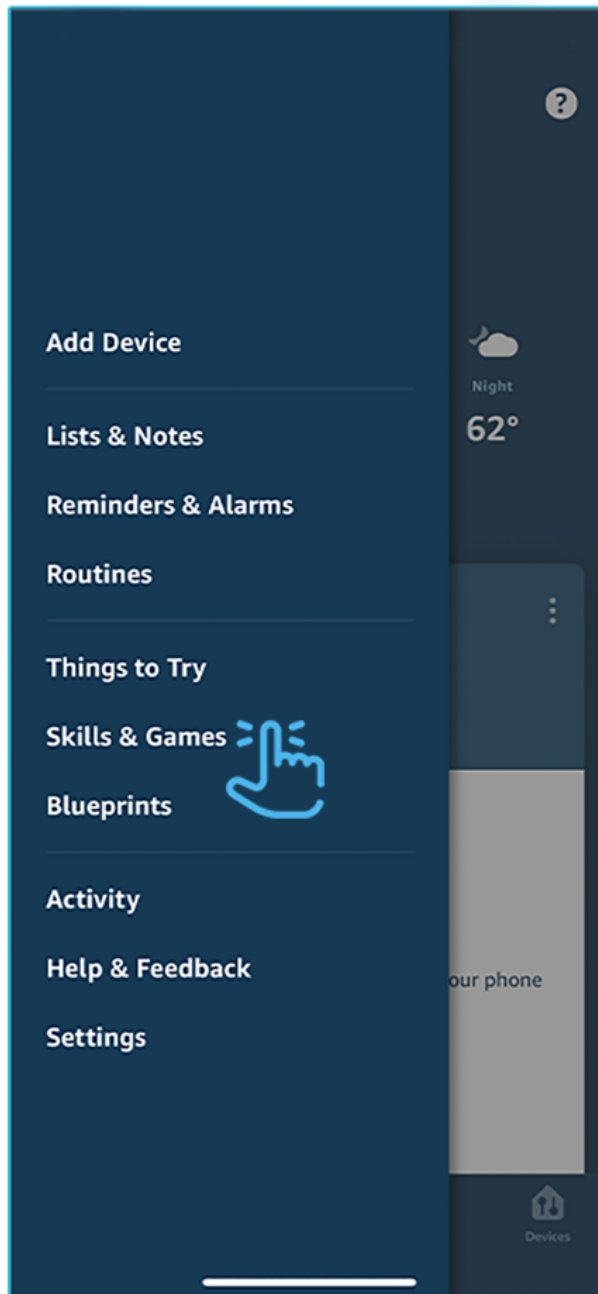
# CONNECTING TO ALEXA

Launch the Alexa App, then  
tap on the Menu.  
(in the upper left corner)



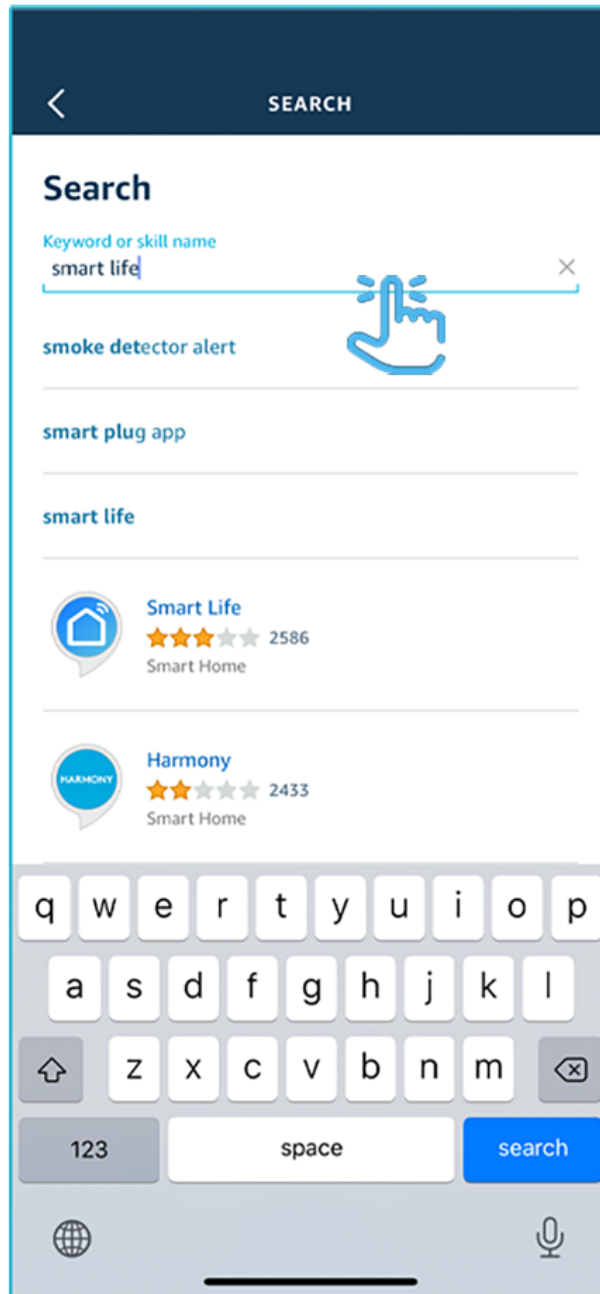
1

## Tap Skills & Games.



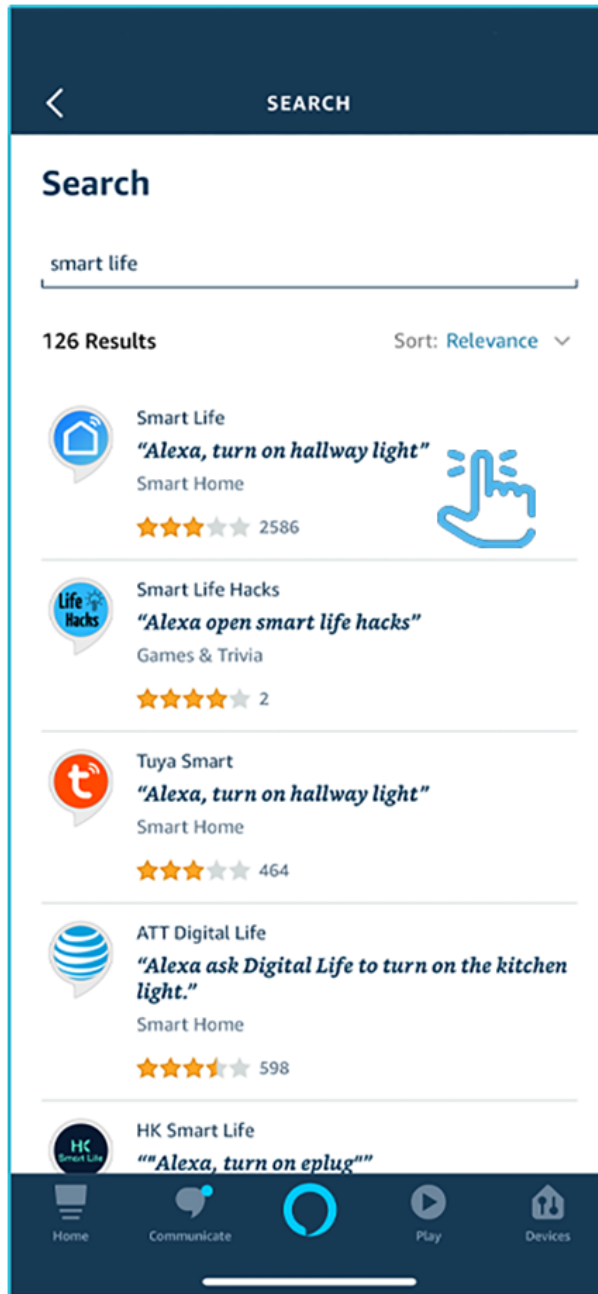
2

## In the search menu type Smart life.



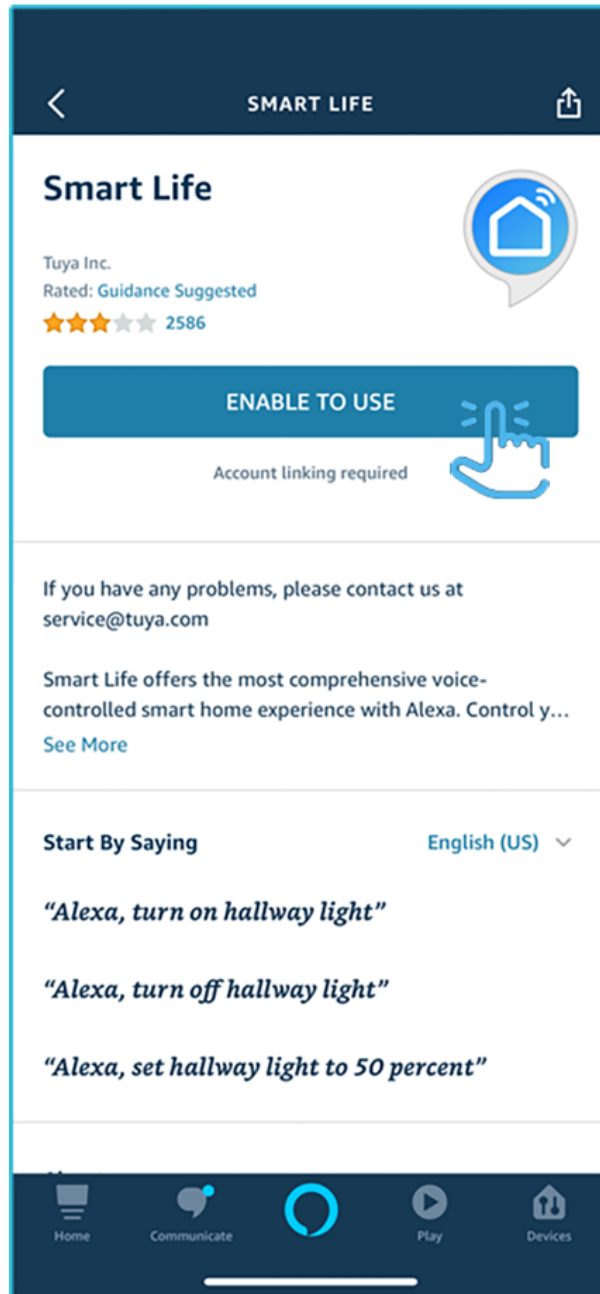
3

# Select Smart life.



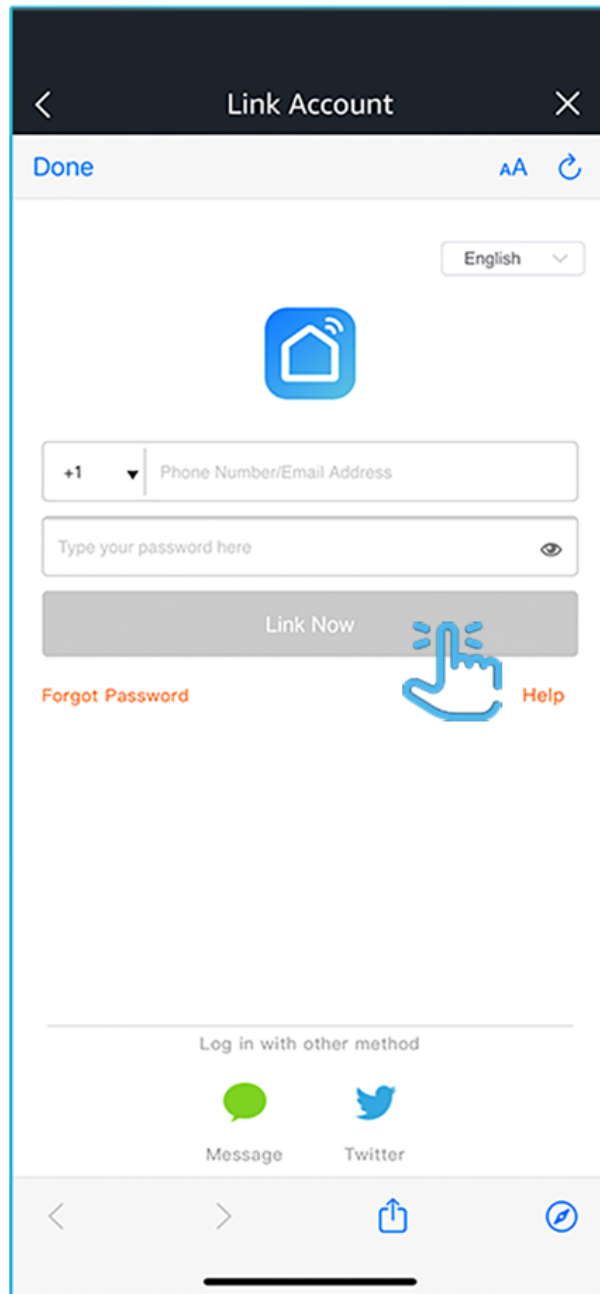
4

# Tap Enable to use



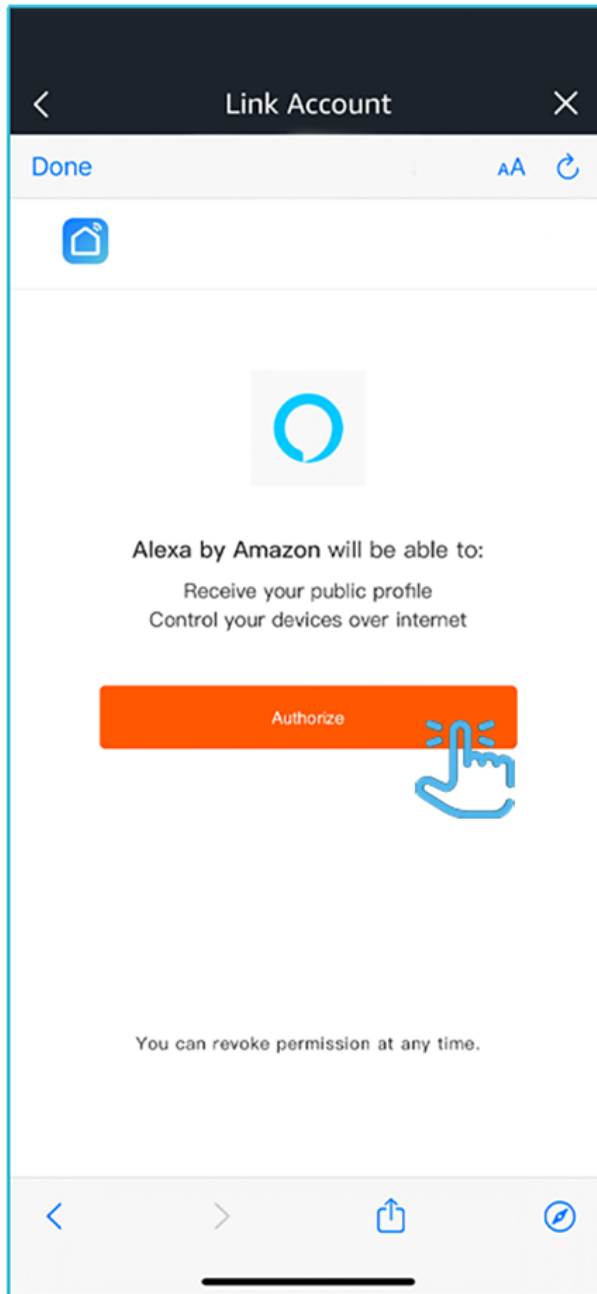
# 5

Enter the user & password  
from the Smart life App.  
Then tap Link Now.



6

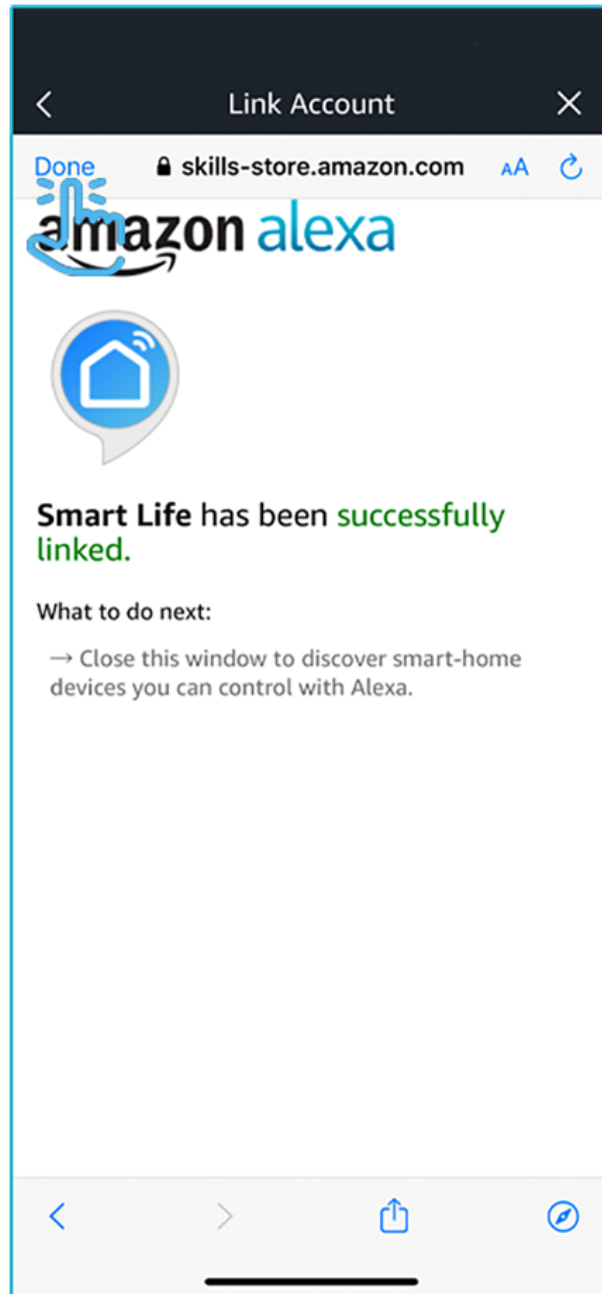
# Tap Authorize.



7

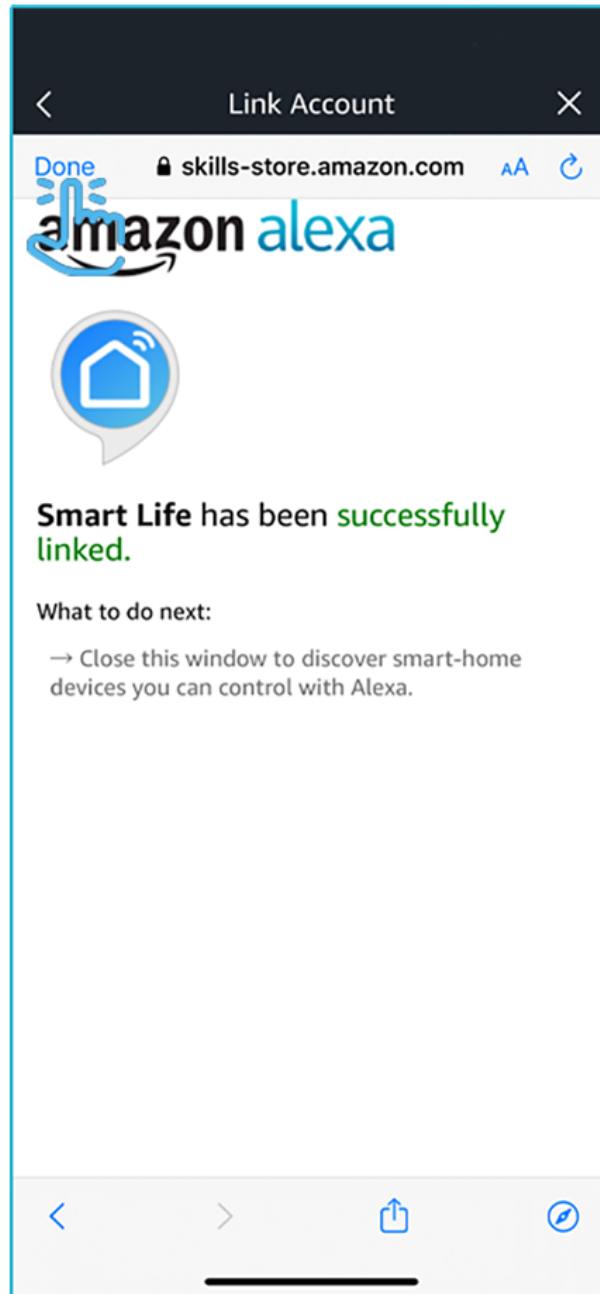


## Tap Done in the upper left corner.



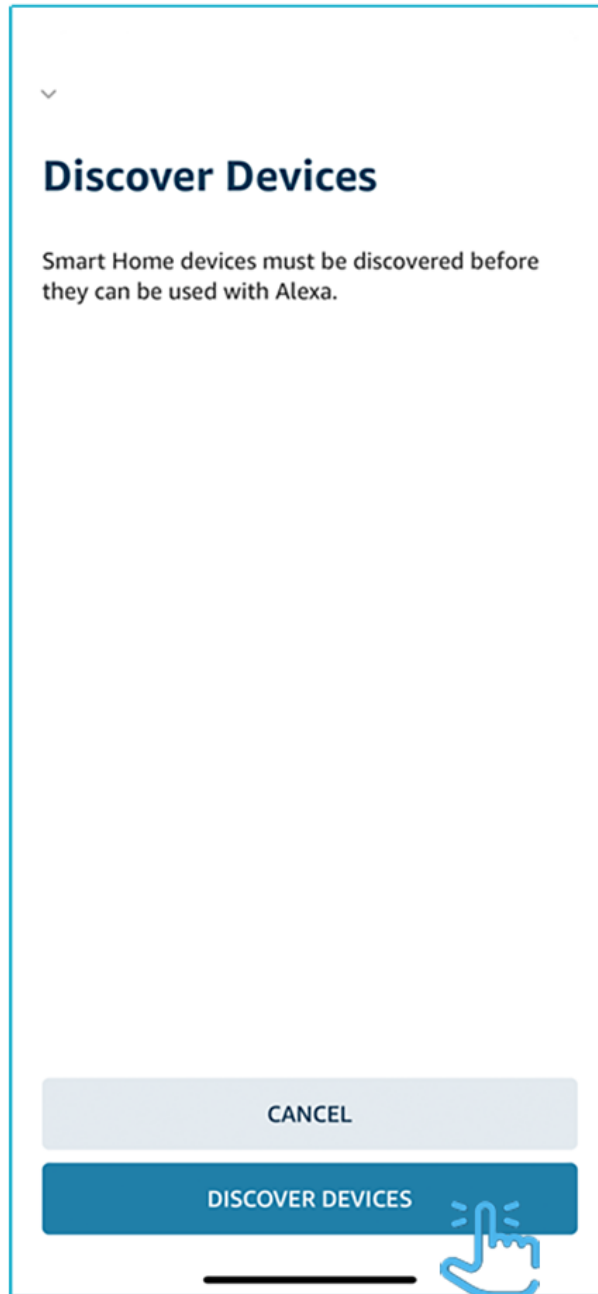
8

Tap Done  
in the upper left corner.



8

# Tap Discover Devices.



# 9

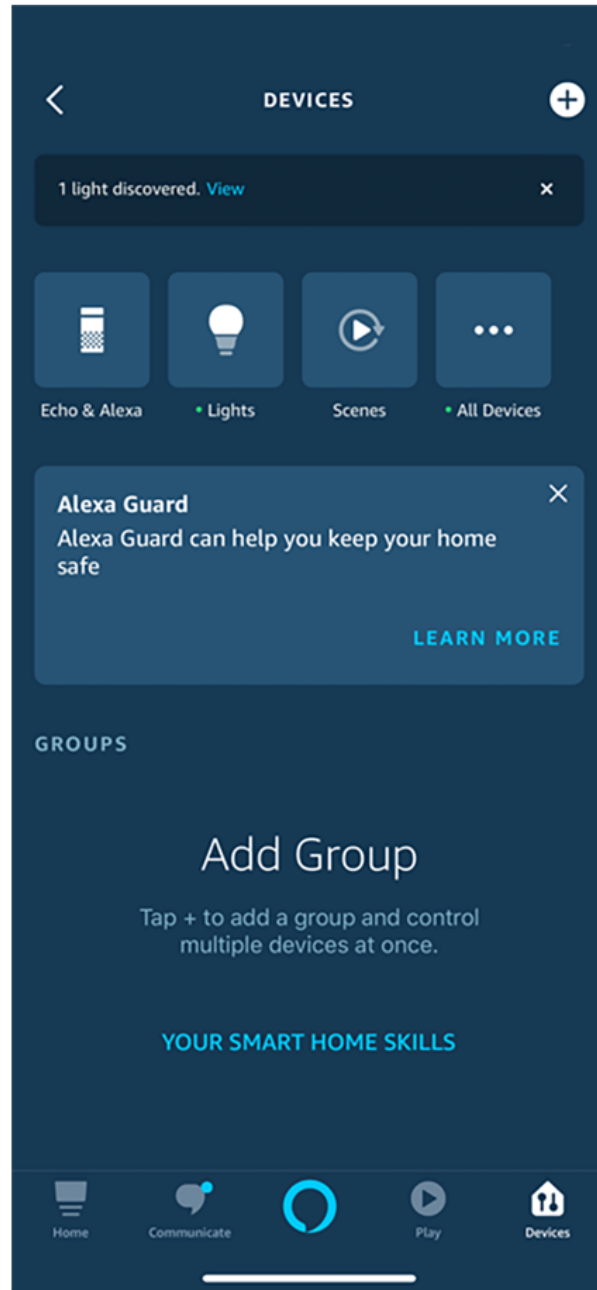
## Alexa will now discover and add device(s)

**Alexa is looking for devices to  
connect...**

This may take up to 45 seconds.

**10**

Once the device(s) are discovered they would appear under Devices (lower right corner).



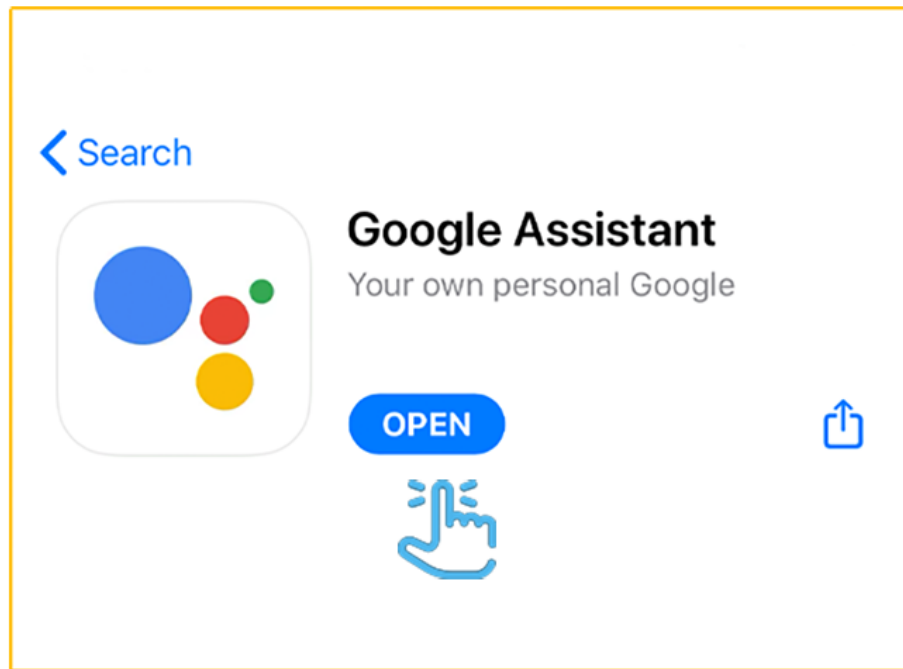


works with the  
**Google Assistant**



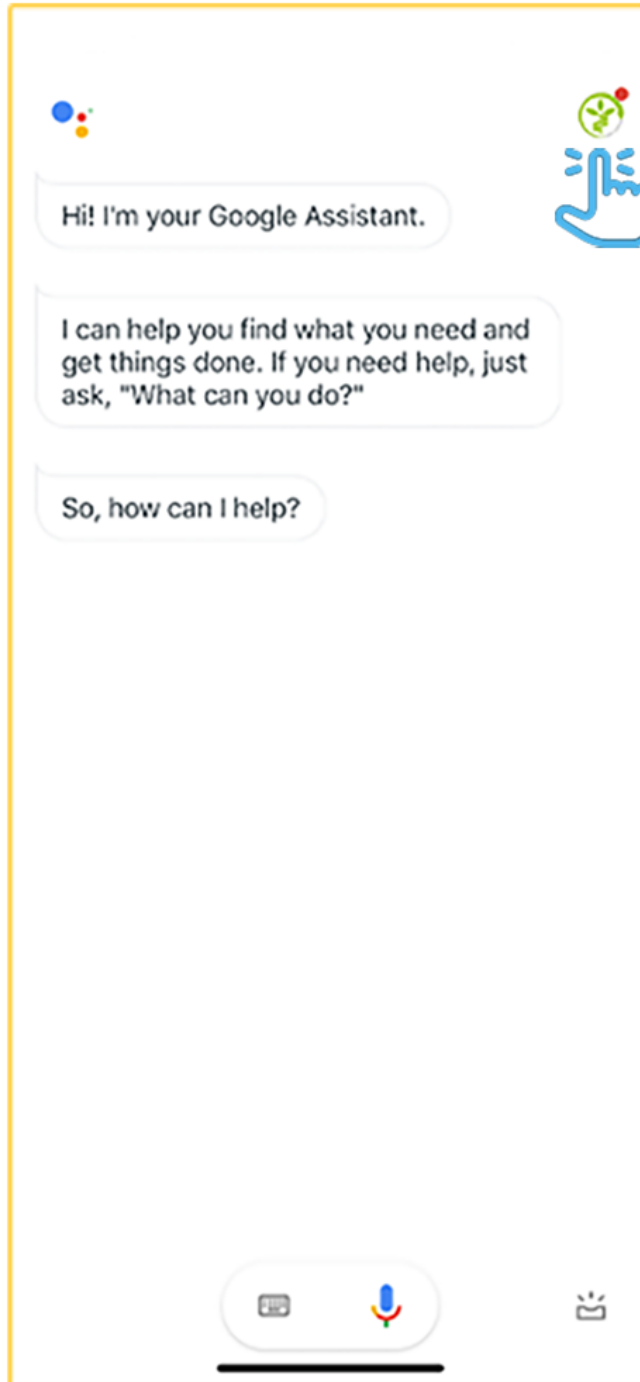
# CONNECTING TO GOOGLE HOME

# Download and open the Google Assistant App



1

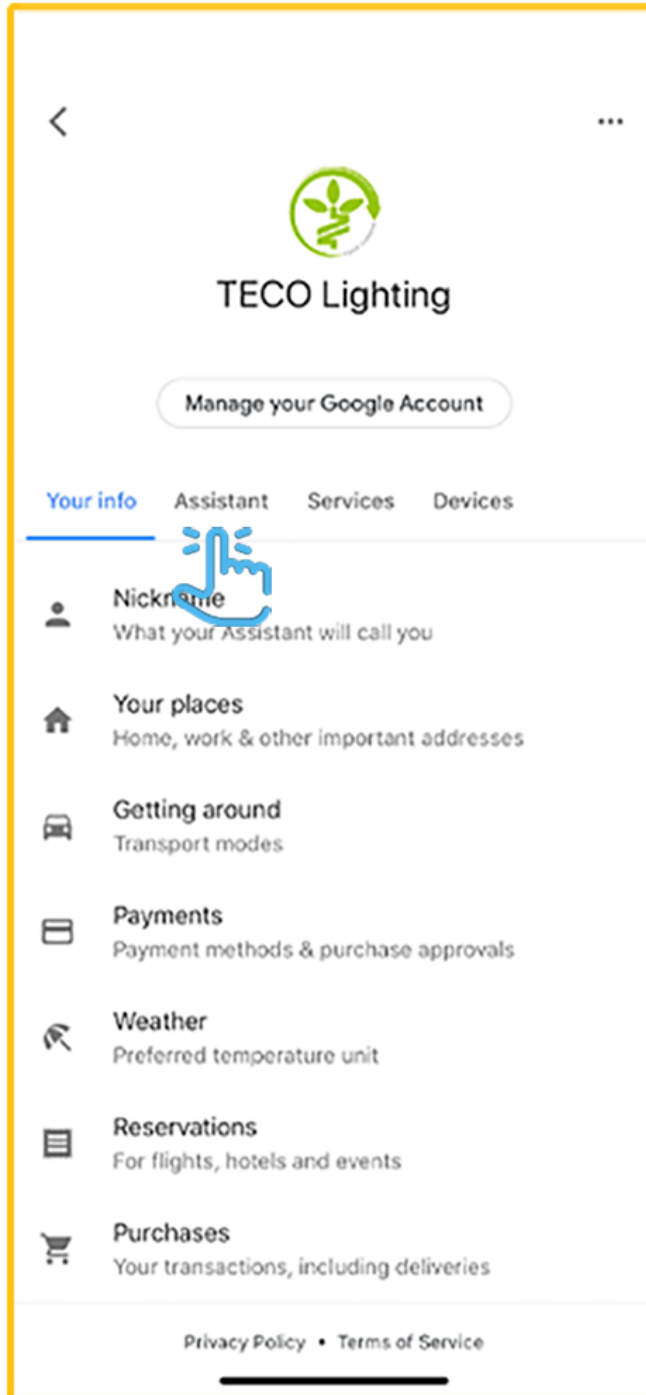
In the upper right corner  
tap the Circle icon.



2

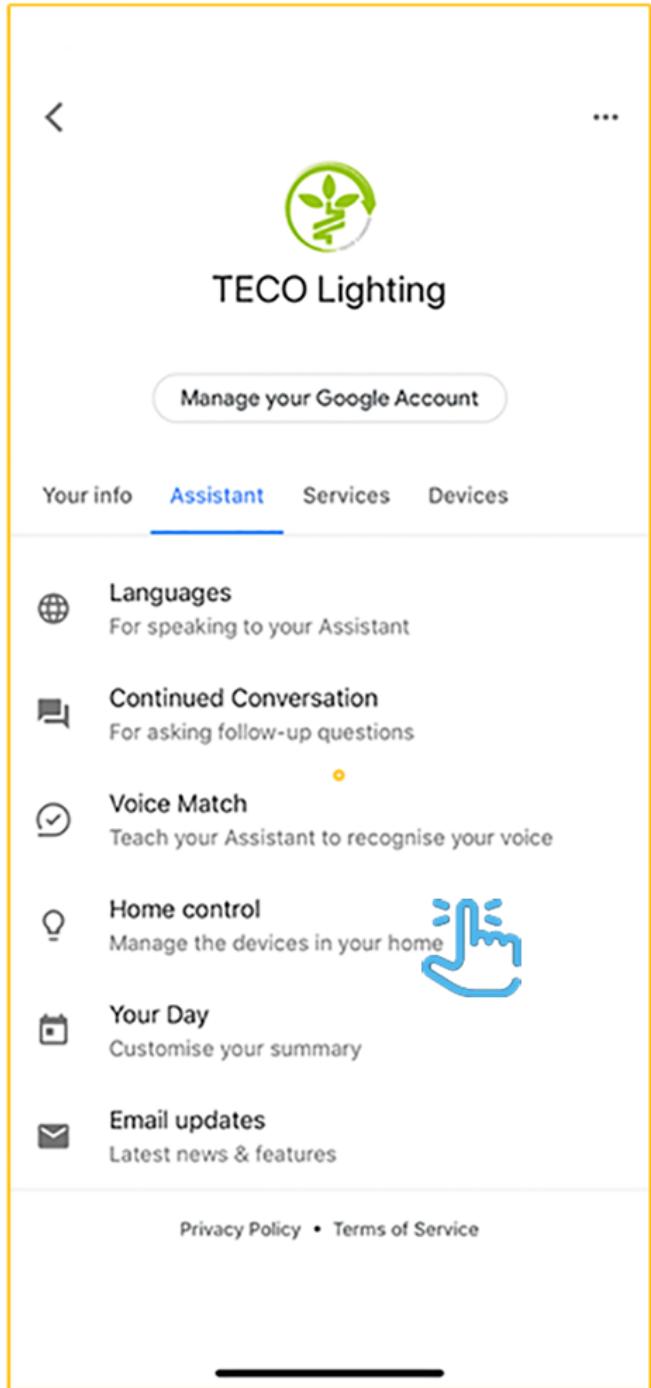


# Tap Assistant.



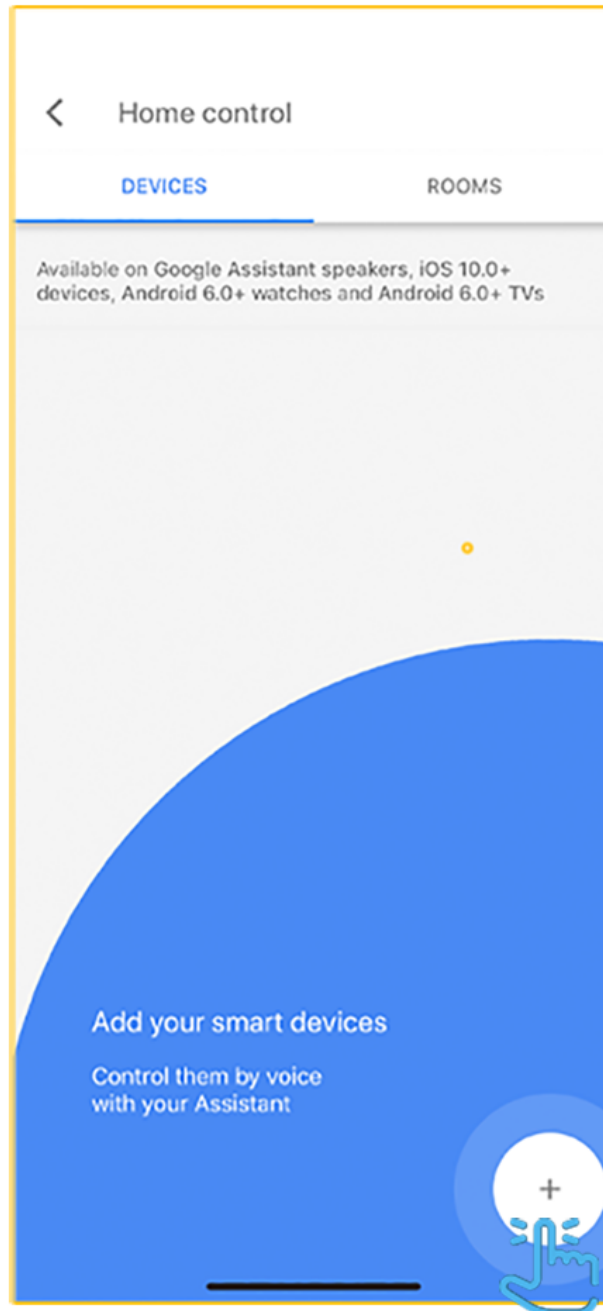
3

# Tap Home Control.



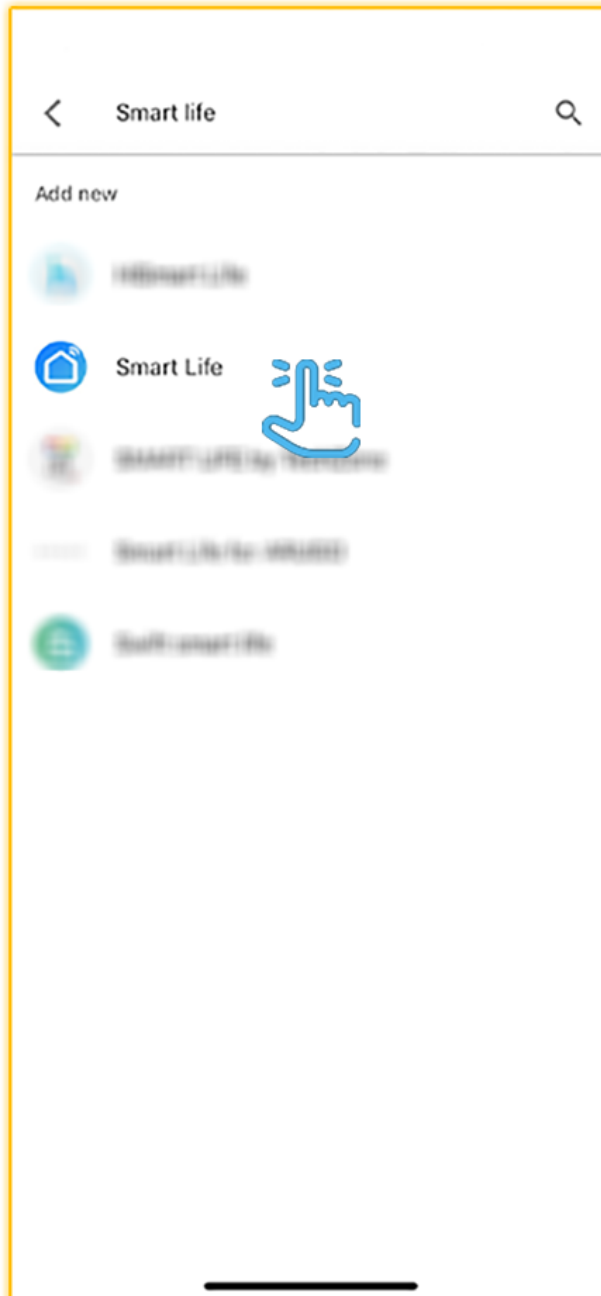
4

To add a device, tap on the Circle(+) located in the lower right corner.



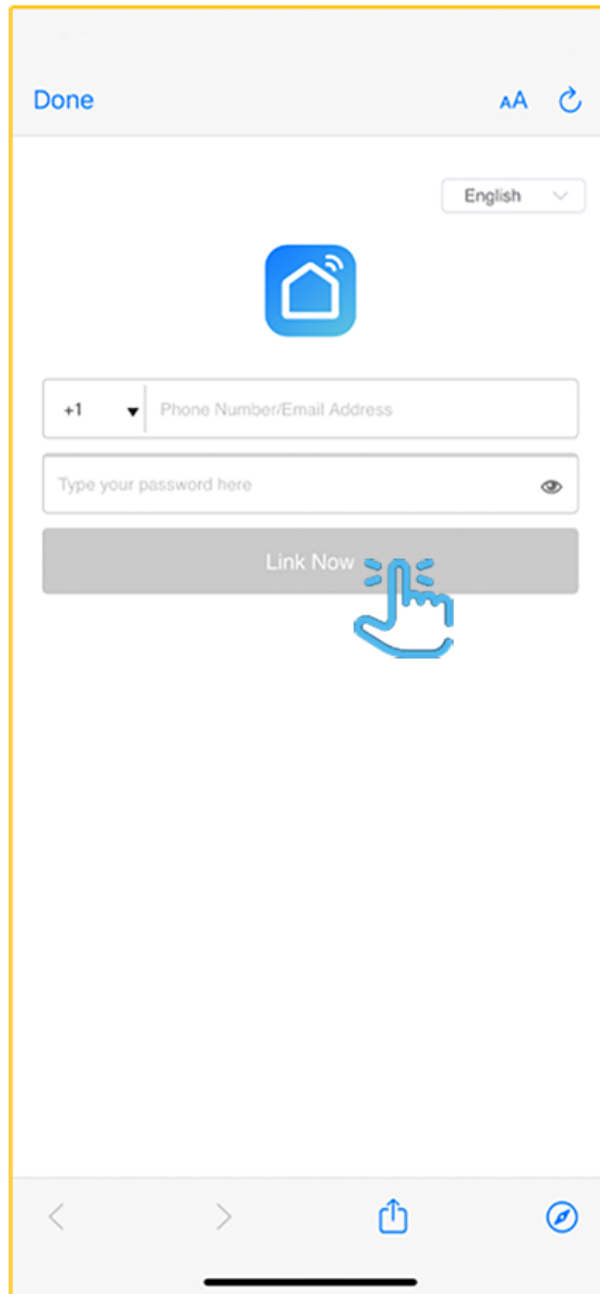
5

## Scroll down or search and select Smart life



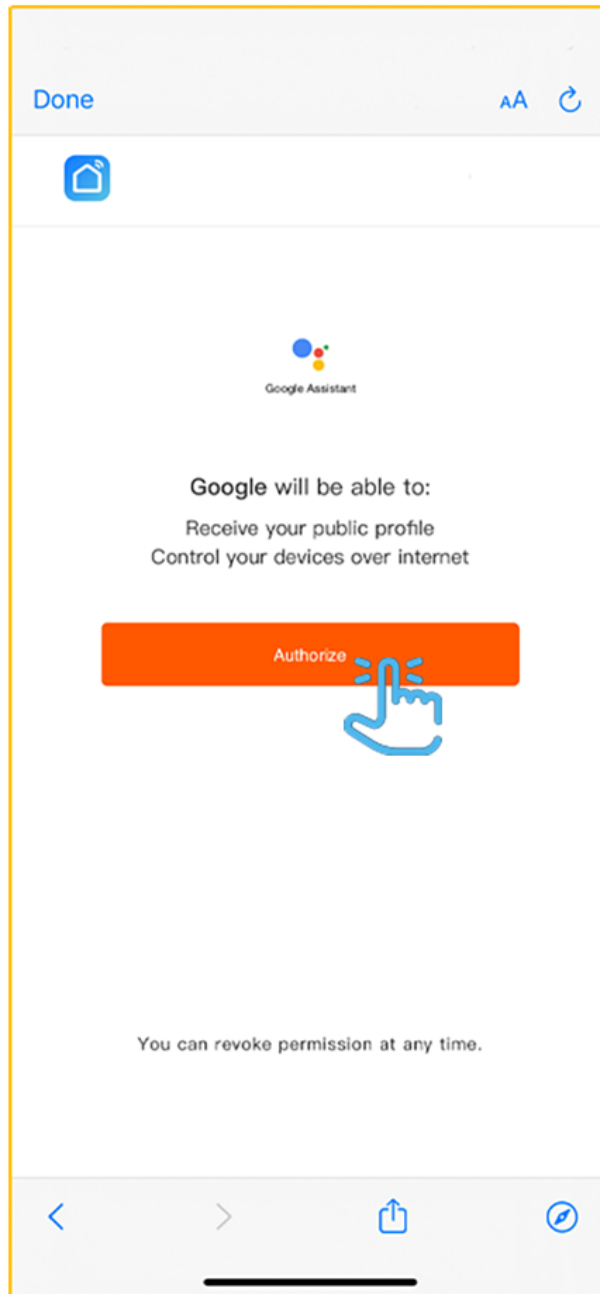
6

Enter the user&password  
from the Smart life app  
the tap Link Now.



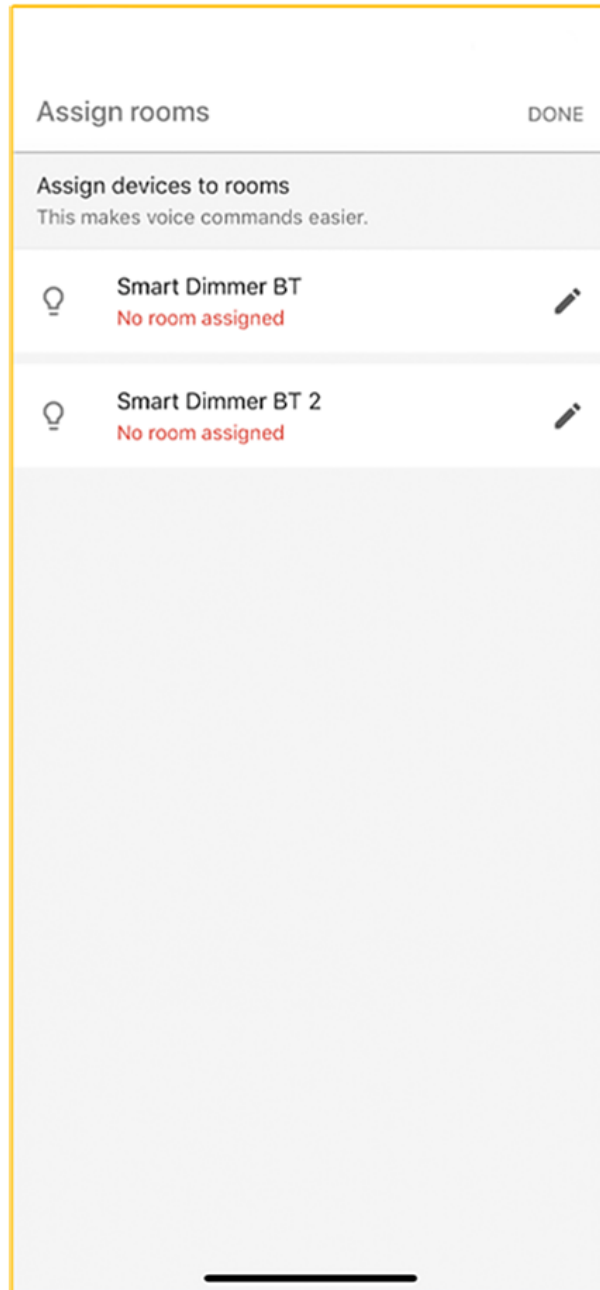
7

# Tap Authorize.



8

Once devices are connected  
tap Done to return to Devices or  
tap the Pen icon to assign a room.



9