

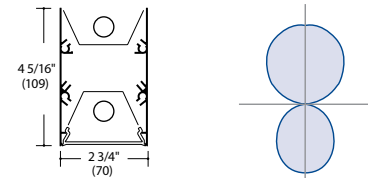
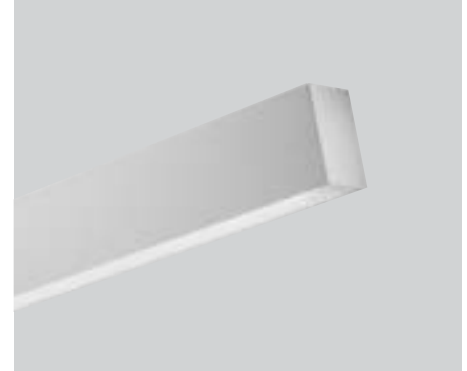
MOD 22 Pendant Indirect/Direct

Fixture Type:

Project Name:

Ordering Guide

Feature	Code	Options	Description
Series		22	MOD
Mounting		P	Pendant
Fixture distribution		ID	Indirect/Direct
Row length (in feet)		____'	Enter in foot increments. Note fixture lengths below.
Max length in row		03 04 06 08 12	3', 914mm 4', 1219mm 6', 1829mm 8', 2438mm 12', 3658mm
Diffuser		BW SGL	Blade Baffle, White Soft Glow Lens
Finish/Color		C1 C2 C3 C4 C5 C6 CC	CWM-Matte White TCWM-Textured Matte White CSL-Light Silver CMA-Machined Aluminum CCB-Carbon Black TCBC-Textured Camera Black CXY-Custom Color
Lamping (Uplight)		1T5 1T5HO 1T8	1-Light T5 Lamping 1-Light T5HO Lamping 1-Light T8 Lamping
Lamping (Downlight)		1T5 1T5HO 1T8	1-Light T5 Lamping 1-Light T5HO Lamping 1-Light T8 Lamping
Ballast (non-dimming T5/HO)		NPN	Electronic, program-start
Ballast (non-dimming T8)		NIN NPN NIL NPL NIH NPH	Electronic Electronic, program-start Electronic, low-wattage Electronic, low-wattage, program-start Electronic, high light output Electronic, high light output, program-start
Ballast (dimming)		010V LVD DALI LLS	0-10V Dimming Line Voltage Dimming Dali System Light Level Switching 50/100 See <i>Ballast</i> section for additional dimming ballast options.
Circuiting		1C 2C AC AF	1 Circuit 2" Circuit Uplight/Downlight Alternate Lamp Compart Switch Alternate Fixture Switching
Voltage		UNV 120 277 347	Universal Voltage 120 Volt 277 Volt 347 Volt
Suspension kit		FA1 FA2 FA3 FA4	Suspension Kit, 51" Suspension Kit, 87" Suspension Kit, 219" Suspension Kit, 363"



Key Features

- Extruded aluminum housing
- Small profile
- On-module mounting

MOD 22 Pendant Indirect/Direct

Ordering Guide (continued)

Optional Features	Code	Options	Description
Nightlight		_NL	Nightlight Circuit Required. Enter quantity. 2NL = 2 nightlight circuits/row
Emergency		_EF	Emergency Battery Required. Enter quantity. 2EF = 2 emergency batteries/row
Thru-wiring		W1 W2 W3 W4	No Thru Wire Provide Normal and Emergency Thru Wiring* Provide Normal Thru Wiring Only Provide Emergency Thru Wiring Only *Only applicable when specified with emergency
Data Connection		_DCF	Data connection cables required. Enter quantity. 2DCF = 2 cables/row
Fuse		F	Fuse

MOD 22 Pendant Indirect/Direct

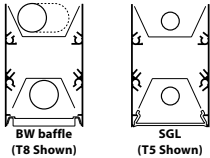
Details

Construction:

Housing-extruded aluminum.
End caps-flat. Steel.

Diffuser Options:

BW Blade Baffle, textured matte white.
SGL Soft Glow Lens, extruded frosted acrylic.



Row Joining:

Fixture end headers are threaded in two locations to allow easy row joining.

Distribution:

60/40(nominal) indirect/direct.

Finish/Color:

Visit www.litecontrol.com/finishes for details.

Lamping:

Available in one-lamp T8, T5 and T5HO cross-sections.
T8 upper lamp is diagonally positioned along length to clear suspension hardware at fixture ends for "on-module" suspension, and provide symmetrical light distribution.



1-T5 or T5HO 1-T8

Ballast:

Electronic, high power factor, thermally protected Class P, Sound Rated A, less than 10% THD, manufactured by a UL Listed manufacturer, as available, determined by Litecontrol. Ballasts with a voltage range of 120 to 277 will be used when fixture configuration and ballast availability allow. The minimum number of ballasts will be used.

Additional Dimming Ballast Options:

LE30	Lutron EcoSystem-3 Wire	<i>(Normal Ballast Factor)</i>
LEH0	Lutron EcoSystem-H Series	<i>(Normal Ballast Factor)</i>
LEH7	Lutron EcoSystem-H Series	<i>(High Ballast Factor)</i>
LEI0	Lutron EcoSystem-Intelligent	<i>(Normal Ballast Factor)</i>
LH3D	Lutron HiLume 3D-3 Wire	<i>(Normal Ballast Factor)</i>
LH37	Lutron HiLume 3D-3 Wire	<i>(High Ballast Factor)</i>
LHHL	Lutron HiLume-Traditional	<i>(Normal Ballast Factor)</i>
LHID	Lutron HiLume-3D Intelligent	<i>(Normal Ballast Factor)</i>
LHI7	Lutron HiLume-3D Intelligent	<i>(High Ballast Factor)</i>

Circuiting:

1C (1 Circuit) Fixture wired for a single circuit.
2C (2 Circuit) Uplight/Downlight lamps are switched separately.
AC (alternate lamp compartment switching) Fixtures wired so every other lamp section can be separately switched/dimmed
AF (alternate fixture switching) Fixtures wired so every other fixture segment can be separately switched/dimmed.

Suspension:

3/64" diameter field-adjustable aircraft cable. Ship separately. Suspension required at every row joint.

Nightlight:

See separate LC-Nightlight spec sheet for additional details.

Emergency:

Battery-powered ballast from a listed manufacturer will operate one lamp for 90 minutes.

Thru wiring:

See separate LC-Thruwire spec sheet for additional details.

Canopy covers:

Non-feed-2" diameter (unless 5" non-feed cover is specified). Feed-5" diameter.

Data Connection:

Lutron EcoSystem data feed

Fuse:

Slow or fast blow; determined by Litecontrol.

Feed cord:

White, 5-wire.

Ratings:

UL listed for damp locations. IBEW. AF of L.

Warranty:

1 year
see www.litecontrol.com for details

Planning for installation

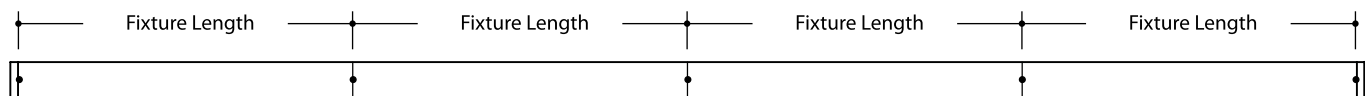
Suspension Assemblies

Provided with 3/64" diameter field adjustable aircraft cables in 51" lengths (4' nominal). Longer length aircraft cables of 87" and 219" are available upon request. See Aircraft Cables sheets for further details.

Suspension mounting locations

Yoke with field adjustable aircraft cable attaches directly to end header. Mounting points in rows are exactly "on module" at 36", 48", 72", 96", and 144", including at ends of rows.

Row diagram



Fixture Lengths: 3', 4', 6', 8', and 12' • Indicates pendant locations

