

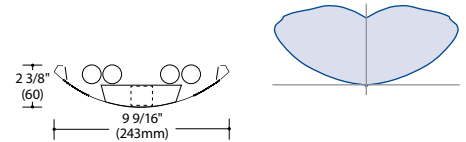
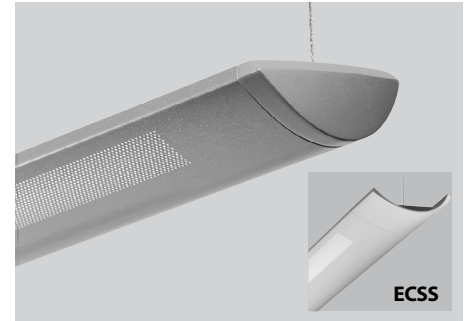
## Arcos Pendant Indirect

Fixture Type:

Project Name:

### Ordering Guide

Feature	Code	Options	Description
<b>Series</b>		59	Arcos
<b>Mounting</b>		P	Pendant
<b>Fixture distribution</b>		I	Indirect
<b>Row length (in feet)</b>		____'	Enter in foot increments. Note fixture lengths below.
<b>Max length in row</b>		04 08	4', 1219mm 8', 2438mm
<b>Diffuser</b>		PS PW PA PSO PWO PAO SGL	Parabolic Baffle, Semi Specular Aluminum Parabolic Baffle, White Parabolic Baffle, Silver Parabolic Baffle, Semi-Specular w/Overlay Parabolic Baffle, White w/Overlay Parabolic Baffle, Silver w/Overlay Soft Glow Lens
<b>Finish/Color</b>		C1 C2 C3 C4 C5 C6 CC	CWM-Matte White TCWM-Textured, Matte White CSL-Light Silver CMA-Machined Aluminum CCB-Carbon Black TCBC-Textured, Camera Black CXY-Custom Color
<b>Lamping</b>		1T5 1T5HO 2T5 2T5HO 2T8 3T5 3T5HO 3T8 4T8	1-Light T5 Lamping 1-Light T5HO Lamping 2-Light T5 Lamping 2-Light T5HO Lamping 2-Light T8 Lamping 3-Light T5 Lamping 3-Light T5HO Lamping 3-Light T8 Lamping 4-Light T8 Lamping
<b>Ballast (non-dimming T5/HO)</b>		NPN	Electronic, program-start
<b>Ballast (non-dimming T8)</b>		NIN NPN NIL NPL NIH NPH	Electronic Electronic, program-start Electronic, low-wattage Electronic, low-wattage, program-start Electronic, high light output Electronic, high light output, program-start
<b>Ballast (dimming)</b>		010V LVD DALI LLS	0-10V Dimming Line Voltage Dimming Dali System Light Level Switching 50/100 See <i>Ballast</i> section for additional dimming ballast options
<b>Circuiting</b>		1C 2C AC AF	1 Circuit 2 Circuit-In Board/ Out Board Alternate Lamp Compartment Switching Alternate Fixture Switching
<b>Voltage</b>		UNV 120 277 347	Universal Voltage 120 Volt 277 Volt 347 Volt



### Key Features

- Steel housing
- Arcuate shape
- Perforated sections

CS™ Control Solutions available

Quick Find litecontrol.com

**59-P-I**

# Arcos Pendant Indirect

## Ordering Guide (continued)

<b>Suspension kit</b>		FA1 FA2 FA3 FA4	Suspension Kit, 51" Suspension Kit, 87" Suspension Kit, 219" Suspension Kit, 363" *Add suffix /V to replace all 2" non-feed canopy covers with 5" canopy covers. FA1/V = 51" suspension kit w/5" canopies.
<b>Optional Features</b>	<b>Code</b>	<b>Options</b>	<b>Description</b>
<b>Nightlight</b>		_NL	Nightlight Circuit Required. Enter quantity. 2NL = 2 nightlight circuits/row
<b>Emergency</b>		_EF	Emergency Battery Required. Enter quantity. 2EF = 2 emergency batteries/row
<b>Thru-wiring</b>		W1 W2 W3 W4	No Thru Wire Provide Normal and Emergency Thru Wiring* Provide Normal Thru Wiring Only Provide Emergency Thru Wiring Only *Only applicable when specified with emergency
<b>Suspension-Stems</b>		P6S SCP6 EQP6	Standard Stem Assy Sloped Ceiling, P6 Stem Assy Earthquake, P6 Stem Assy
<b>End cap</b>		ECSS	End Cap, Shelf Style
<b>Sensors</b>		_SD1 _SO2	Daylight Sensor Required. Enter quantity. 2SD1 = 2 daylight sensors/row Occupancy Sensor Required. Enter quantity. 1SO2 = 2 occupancy sensors/row
<b>Data connection</b>		_DCF	Data connection cables required. Enter quantity. 2DCF = 2 cables/row
<b>Pattern Boxes</b>		C90 C135 TEE CROSS	Non-lighted Corner Connector, 90 Non-lighted Corner Connector, 135 Pattern Box, "T" Shape Pattern Box, "X" Shape
<b>Covers</b>		L1 L2 L3 CV DS DP	Lens Kit, Dust Cover Cover, PFCV20/80 Cover, PFCV40/60 Cover, 100% Down Separator Reflector, Solid Separator Reflector, Perf
<b>Fuse</b>		F	Fuse

# Arcos Pendant Indirect

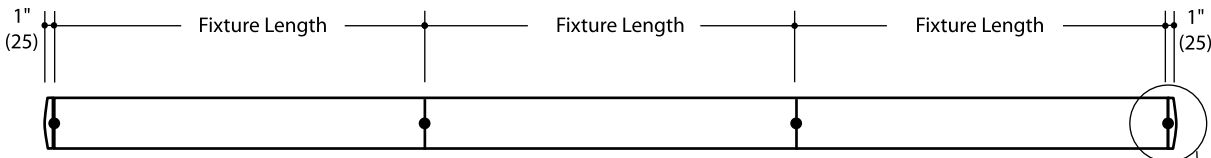
## Details

### Construction:

Housing-steel. Perforated areas are 1 3/4" wide. At center of 8' fixtures, perforations are interrupted for 6 1/2" to match patterns of joined 4' fixtures. End caps-die-cast. Sculpted-style is standard. "Shelf-style" (ECSS) available as option.

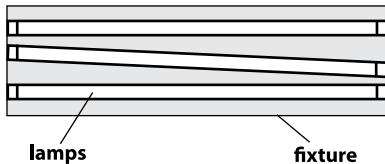
### Mounting:

#### Row diagram



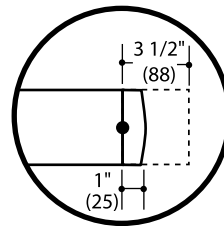
#### Top view: 3-lamp T8 lamp position

Center lamp is inserted *diagonally* on 3-lamp T8 fixtures only



Standard (sculpted) end cap adds 1" length to each end of row or individual fixture.

Optional **ECSS** (shelf-style) end cap adds 3 1/2" length to each end of row or individual fixture.



Fixture Lengths: 4', 8'  
● Indicates pendant locations

### Distribution:

98/02 (nominal) indirect/direct.

### Downlight diffuser (I/D only):

PS-Parabolic Baffle, Semi Specular Aluminum  
PW-Parabolic Baffle, White  
PA-Parabolic Baffle, Silver  
PSO-Parabolic Baffle, Semi-Specular w/Overlay  
PWO-Parabolic Baffle, White w/Overlay  
PAO-Parabolic Baffle, Silver w/Overlay  
SGL-Soft Glow Lens

### Finish/Color:

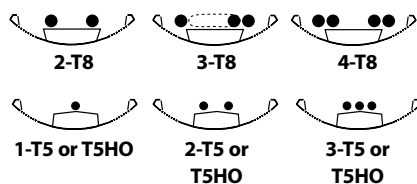
Visit [www.litecontrol.com/finishes](http://www.litecontrol.com/finishes) for details.

### Lamping:

Indirect

Available in one, two or three-lamp T5/T5HO, three or four-lamp T8. In three-lamp T8 configuration, center lamp is diagonally-positioned along length to provide symmetrical light distribution.

#### Cross-section lamping



### Ballast:

Electronic Ballast (**ELB** is for T8 lamping or **ELB/PS** is for T5/T5HO lamping), high power factor, thermally protected Class P, Sound Rated A, less than 10% THD, manufactured by a UL Listed manufacturer, as available, determined by Litecontrol. Ballasts with a voltage range of 120 to 277 will be used when fixture configuration and ballast availability allow. The minimum number of ballasts will be used.

### Additional Dimming Ballast Options:

LE30	Lutron EcoSystem-3 Wire	(Normal Ballast Factor)
LEH0	Lutron EcoSystem-H Series	(Normal Ballast Factor)
LEH7	Lutron EcoSystem-H Series	(High Ballast Factor)
LEI0	Lutron EcoSystem-Intelligent	(Normal Ballast Factor)
LH3D	Lutron HiLume 3D-3 Wire	(Normal Ballast Factor)
LH37	Lutron HiLume 3D-3 Wire	(High Ballast Factor)
LHHL	Lutron HiLume-Traditional	(Normal Ballast Factor)
LHID	Lutron HiLume-3D Intelligent	(Normal Ballast Factor)
LHI7	Lutron HiLume-3D Intelligent	(High Ballast Factor)

### Circuiting:

1C (1 Circuit) Fixture wired for a single circuit.

2C (2 Circuit in-board, out-board) Inner & outer lamps are switched separately.

AC (alternate lamp compartment switching) Fixtures wired so every other lamp section can be separately switched/dimmed

AF (alternate fixture switching) Fixtures wired so every other fixture segment can be separately switched/dimmed

### Suspension Kit:

3/64" diameter field-adjustable aircraft cable. Ship separately. Suspension required at every row joint. Mounting points are exactly 36", 48", 72" & 96" (3', 4', 6', 8' fixture lengths respectively)

# Arcos Pendant Indirect

## Details (continued)

**Nightlight:**

See separate LC-Nightlight spec sheet for additional details.

**Emergency:**

Battery-powered ballast from a listed manufacturer will operate one lamp for 90 minutes.

**Thru wiring:**

See separate LC-Thruwire spec sheet for additional details.

**Canopy covers:**

Non-feed-2" diameter (unless 5" non-feed cover is specified). Feed-5" diameter.

**Sensors:**

Daylight sensor only (Wattstopper part# FD301). Installs between diffusers. See separate LC-Controls spec sheet for additional details.

**Data Connection:**

Lutron EcoSystem data feed

**Pattern Boxes:**

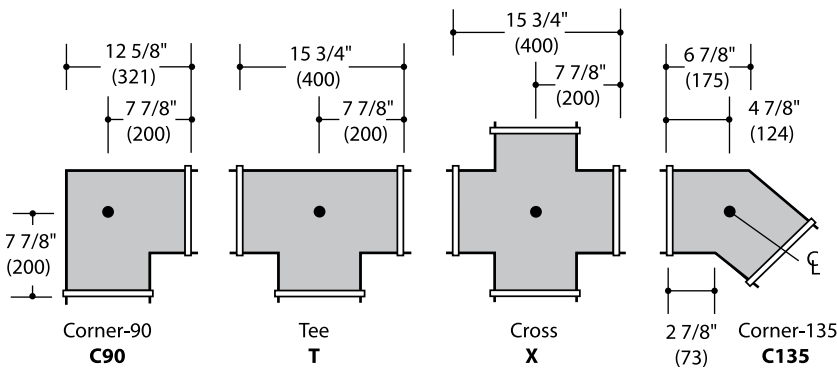
Extruded aluminum, non-perforated. Each box shall have a rigid cross-member with a .687" diameter stem hole at center to accept pendant assemblies.

**Fuse:**  
Slow or fast blow; determined by Litecontrol.

**Feed cord:**  
3-wire, 5 amps max; 4-wire, 7 amps max; 5-wire, 5 amps max.

**Ratings:**  
CSA listed for damp locations. IBEW. AF of L.

**Warranty:**  
1 year  
see [www.litecontrol.com](http://www.litecontrol.com) for details



## Arcos Pendant Indirect

### Photometry

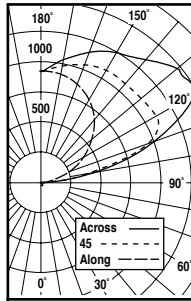
**Fixture:** 59-P-I-04-CX-2T8

**Lamping:** 2-T8

**Efficiency:** 86%

**Distribution:** 99/1

**Test report:**



ZONAL LUMEN SUMMARY			
ZONE	LUMENS	% LAMP	% LUMINAIRE
180-90°	4930	85.00	98.75
90-0°	62	1.07	1.25
180-0°	4992	86.07	100.00

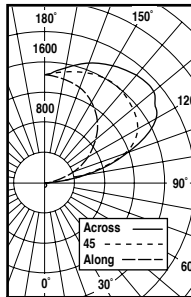
**Fixture:** 54-P-I-04-CX-3T8

**Lamping:** 3-T8

**Efficiency:** 81%

**Distribution:** 97/3

**Test report:**



ZONAL LUMEN SUMMARY			
ZONE	LUMENS	% LAMP	% LUMINAIRE
180-90°	6832	78.53	96.90
90-0°	218	2.52	3.10
180-0°	7051	81.05	100.00